

COVID-19 Telephone Assessment, Testing Pathway and Return to Work of Symptomatic Healthcare Workers Version 9

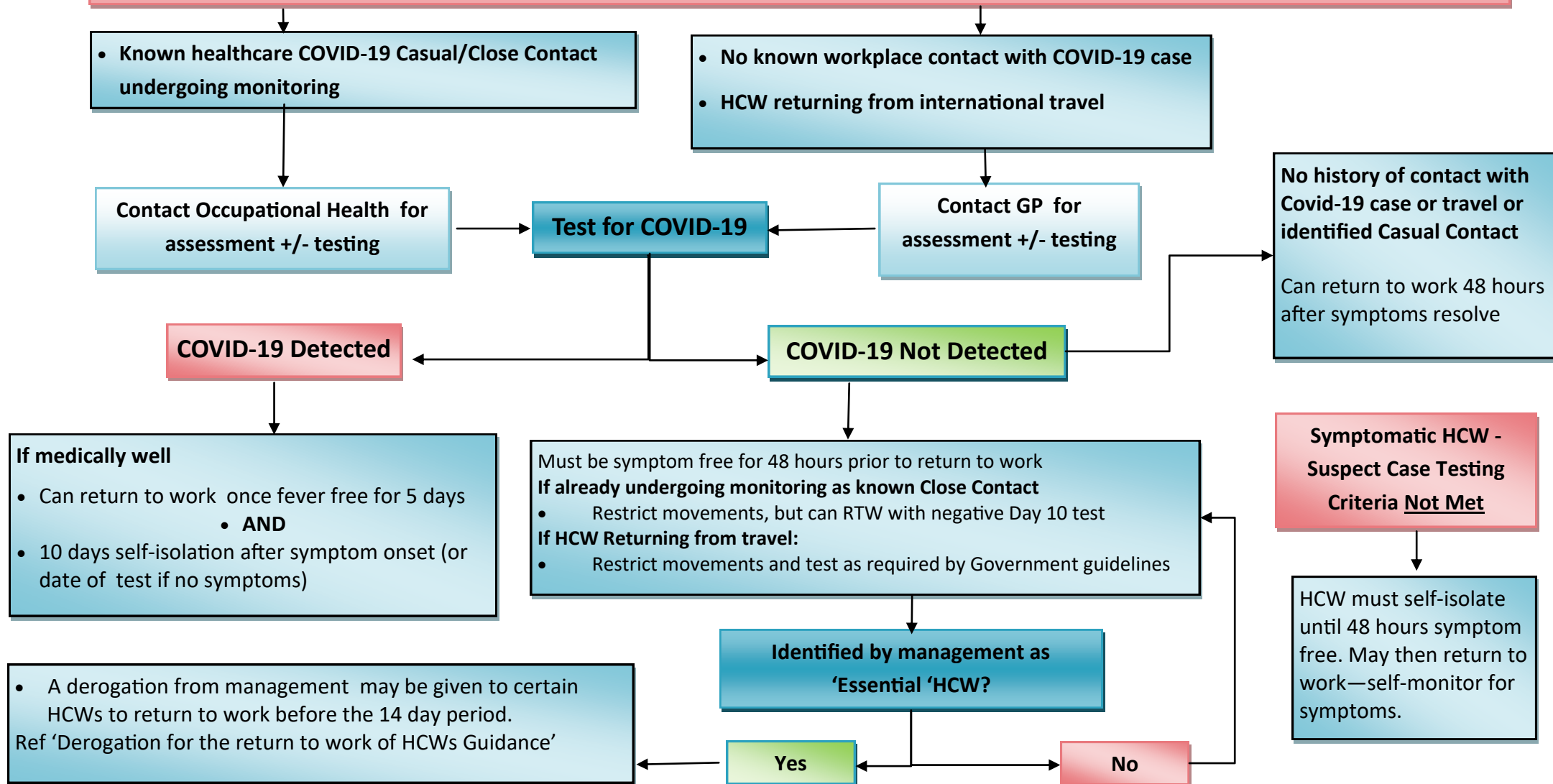


SUSPECT CASE TESTING CRITERIA

A Healthcare Worker (HCW) with acute respiratory infection (sudden onset of at least one of the following: cough, fever, shortness of breath) **OR** sudden onset of anosmia¹, ageusia² or dysgeusia³ **AND** with no other aetiology that fully explains the clinical presentation

1 Loss of sense of smell; 2 Loss of sense of taste; 3 Distortion of sense of taste

A HCW with any acute respiratory illness **AND** having been in contact with a confirmed or probable COVID-19 case in the last 14 days prior to symptom onset;



PLEASE NOTE: Advice re self isolation if Covid-19 detected for close contacts and derogation differs for COVID-19 'Variants of Concern'