

District Hospital Wicklow

**ANNUAL
REPORT
1996**



**EASTERN
HEALTH
BOARD**

BORD
SLAINTE
AN OIRTHIR



District Hospital Wicklow

ANNUAL REPORT 1996

REGIONAL LIBRARY AND
INFORMATION SERVICE



**EASTERN
HEALTH
BOARD**

BORD
SLAINTE
AN OIRTHIR

DISTRICT HOSPITAL WICKLOW

ANNUAL REPORT 1996



I.	Matron	—	Ms. Nora Fitzpatrick
	Asst. Matron	—	Ms. Catherine Marah
	Manager	—	Mr. John Hempenstall
	Engineering Officer	—	Mr. Michael Kinsella
	<u>Medical</u>		
	Dr. John Keating		Dr. Truls Christiansen
	Dr. Vincent Pippet		Dr. Colin Power
	Dr. Nicholas Byrne		Dr. Neil Golden

2. STATISTICAL INFORMATION

<u>Bed Complement</u>	30	Day Places 25
	<u>1996</u>	<u>1995</u>
Admissions	75	99
Discharges	56	82
Deaths	20	17
Bed Days	10,439	10,073
Bed Occupancy Rate	95%	92%

At present there are 30 patients in the Hospital, 12 male and 18 female

<u>Age Breakdown</u>	<u>Male</u>	<u>Female</u>
40 - 50	—	1
50 - 60	—	—
60 - 70	1	1
70 - 80	1	1
80 - 90	7	10
90- 100	3	5
	<hr/>	<hr/>
	12	18

Dependency Level of Patients

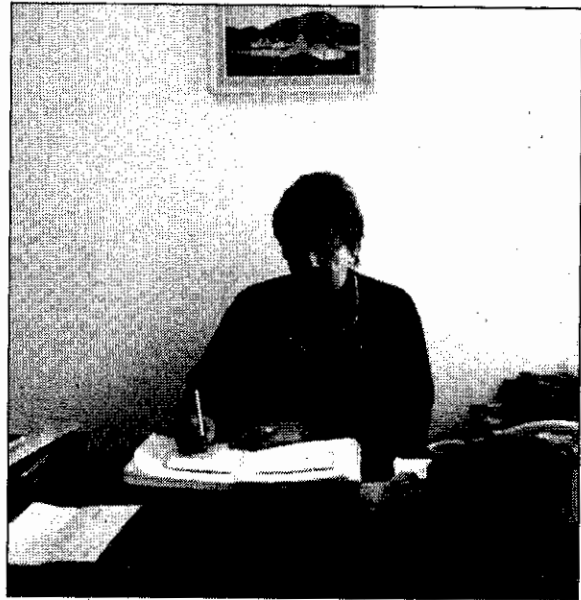
Of the 30 patients in residence:-

- 12 are Doubly Incontinent
- 6 are Singly Incontinent
- 10 Must be fed by staff
- 10 Can eat with Supervision
- 10 Can feed themselves

Mobility

Of the 30 patients in residence:-

- 9 are fully mobile
- 7 are partially mobile
- 14 are bed fast



Ms. Nora Fitzpatrick, Matron

3.. BUDGET 1996

Pay	—	£492,000
Non-Pay	—	£ 92,000
Gross Total	—	£584,000
Less Income	—	£ 98,000
Net Total	—	£486,000
Average net daily cost		£46.55

**REGIONAL LIBRARY AND
INFORMATION SERVICE**



CASUALTY DEPARTMENT

4. CASUALTY

The hospital provides a minor casualty service for its immediate catchment area. In 1996, there were a total of 1,448 casualty attendances. An excellent medical cover is provided to the Casualty Department by the six General Practitioners in the G.P. Access Scheme for the Hospital.

5. DAY CARE UNIT

The Hospital has a very effective Day Care Unit which provides a vital service in maintaining the elderly in their own home environment who otherwise might have to be admitted to the hospital. The number of patients on the Day Care Register is currently 135 with an average daily attendance of 25 patients. The frequency of attendance depends on the individual need of the patient with the objective of each patient attending at least twice a week.

Services available to patients attending the Day Care include medical (as required) Nursing, Physiotherapy, Occupational Therapy and Chiropody. They can also avail of laundry, bathing and hairdressing facilities. Patients are also provided with a mid-day meal and a light tea before going home. The average daily cost of patients attending the Day Care Unit is £8.76.

<u>Attendances</u>	<u>1996</u>	<u>1995</u>
	7,155	7,023



6. MEDICAL COVER - GENERAL PRACTITIONER ACCESS SCHEME

Medical cover for the Hospital is provided by six local General Practitioners participating in the G.P. Access Scheme for the Hospital. This system of medical cover for the Hospital replaced the single appointment of a Medical Officer and has proved very satisfactory. The G.P. Access Scheme is reviewed annually with the participating General Practitioners and will continue in operation for a further twelve months.

The General Practitioners involved in the scheme are:-

Dr. John Keating	Dr. Truls Christiansen
Dr. Vincent Pippet	Dr. Colin Power
Dr. Nicholas Byrne	Dr. Neil Golden

The present distribution of patients is as follows:-

Dr. Keating	—	5	Dr. Byrne	—	5
Dr. Pippet	—	6	Dr. Power	—	5
Dr. Golden	—	5	Dr. Christiansen	—	4

7. ASSESSMENT TEAM MEETINGS

There are four assessment/rehabilitation beds at the Hospital. Assessment team meetings take place every Tuesday at the Hospital with the following people in attendance.

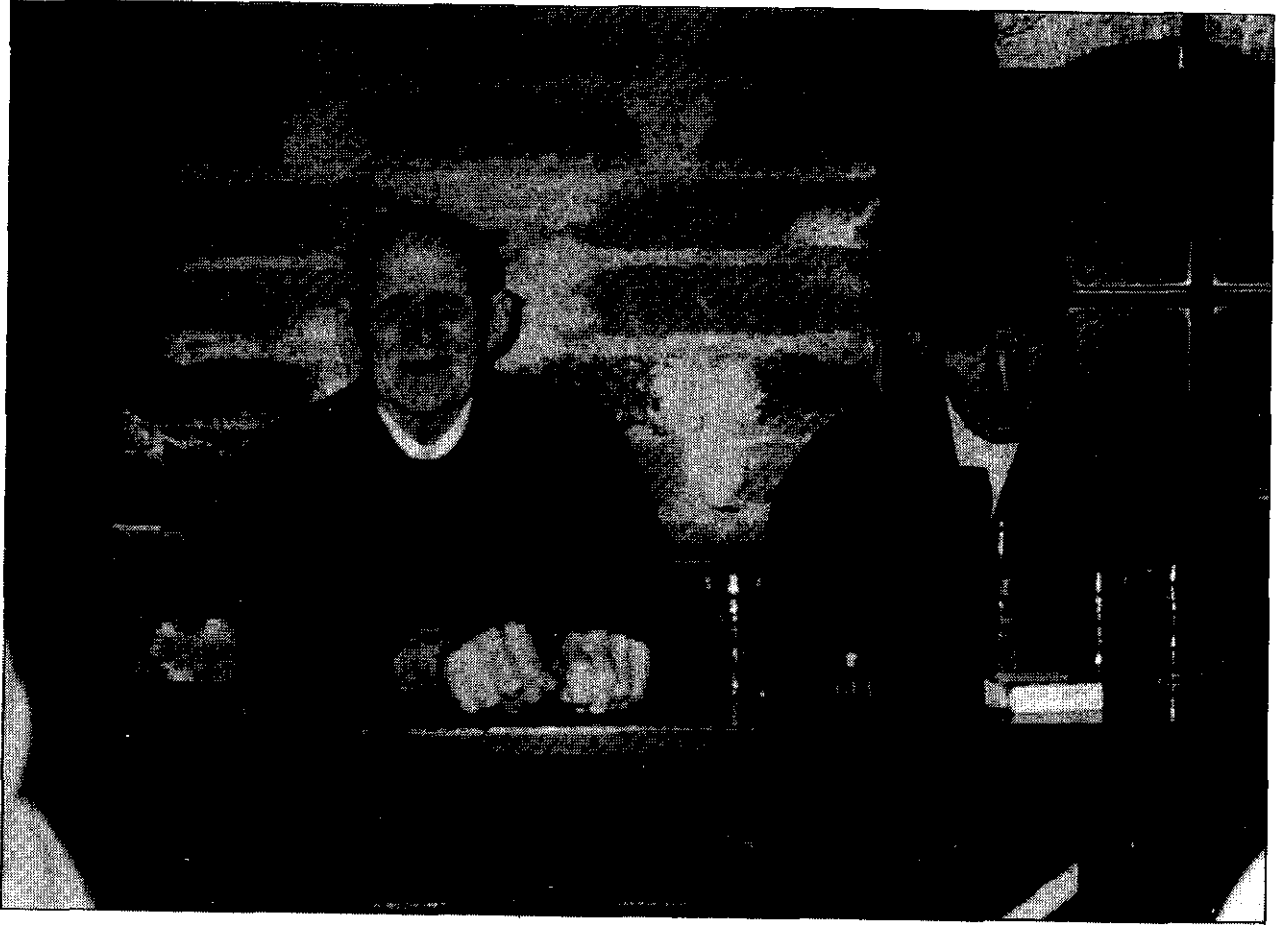
- Consultant Geriatrician
- Matron
- Doctor in Administrative Charge
- Public Health Nurse
- Administrator

The aim of this team is to assess all persons from a Medical, Nursing and Social viewpoint in their own home environment prior to admission with the emphasis on retention in the community with the support of the appropriate community services.

The team which meets weekly at the Hospital, monitors admissions to the assessment beds and considers applications for admission. Patients who are admitted to the assessment beds will be discharged to one of the following locations:

- Home
- Other Hospitals
- Long-stay Beds in Wicklow Hospital
- Other Beds in Wicklow Hospital (Respite Care or Terminal Care).

In 1996, over 71% of patients admitted were rehabilitated and returned to their own homes with the back-up services of Community Care.

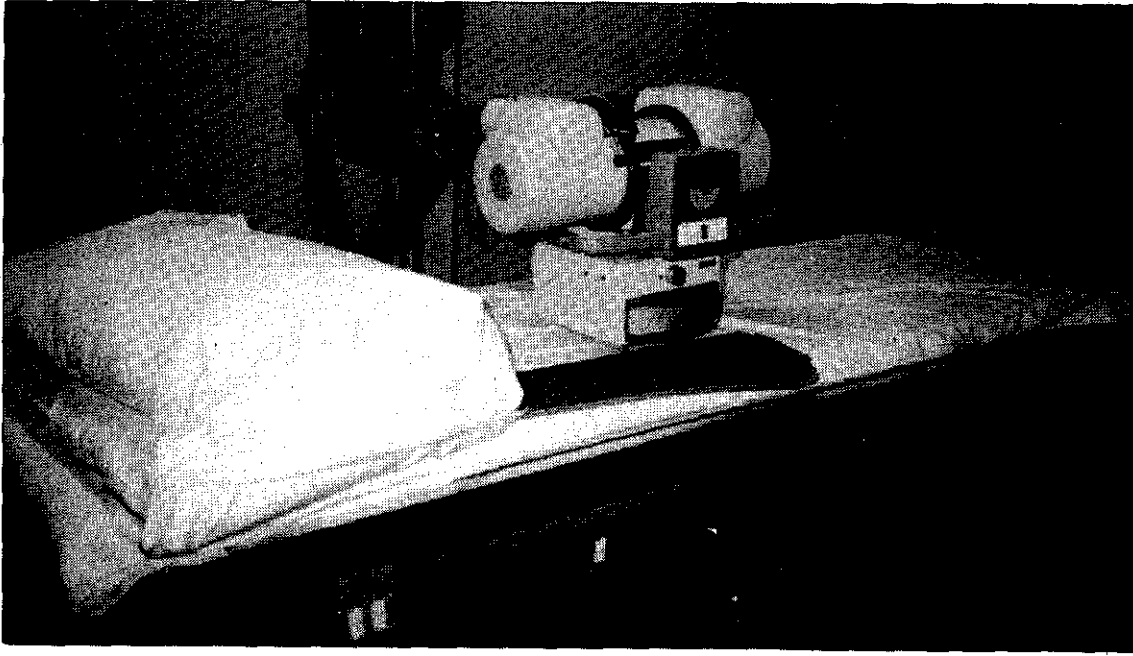




8. X-RAY UNIT

The Hospital has a small X-Ray Unit which provides an excellent service. One X-Ray session per week is held to cater for routine X-Ray work, i.e. Chest X-Rays etc. This facility has the effect of avoiding the need for patients to travel to the city hospitals for this service.

	<u>1996</u>	<u>1995</u>
Attendances	502	497



9. PHYSIOTHERAPY

A physiotherapy service is provided for both in-patients and day care patients. The Physiotherapy Service plays a vital role in the rehabilitation and progressive recovery and discharge home of patients.

	<u>1996</u>	<u>1995</u>
No. of Treatments	3,536	3,412



10. OCCUPATIONAL THERAPY

An Occupational Therapist attends the Hospital on a weekly basis and provides a service for both in-patients and day patients. Patients are assessed and helped to cope with the activities of every day living at home as part of their rehabilitation. The number of treatments in 1996 were as follows:

<u>1996</u>	<u>1995</u>
1,315	1,035



11. CHIROPODY SERVICE

There is a Chiropody service provided at the Hospital for in-patients and day-patients. The Chiropodist attends as required and the availability of this service has proved to be of great benefit in the rehabilitation of patients.

	<u>1996</u>	<u>1995</u>
Treatments	147	136

12. NUTRITIONAL ADVISOR

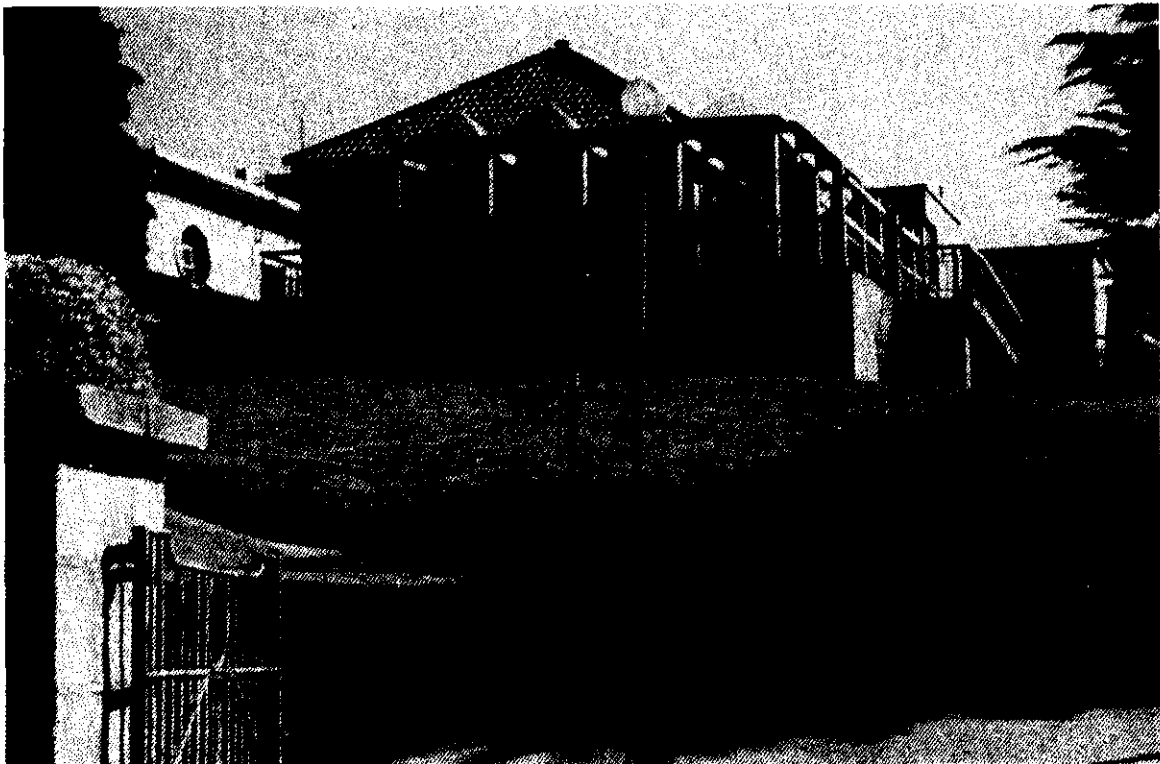
The Nutritional Advisor for the Elderly visited the Hospital throughout the year organising lectures and monitoring the progress of the Nutrition Education Programme initiated at the Hospital. The availability of the service to the Hospital has assisted in meeting the dietary needs of the patients.

13. FUNDRAISING ACTIVITIES

The Wicklow Patients Benefit Fundraising Committee continues to be extremely active in its fundraising efforts on behalf of the Hospital.

The annual field day and sponsored cycle are held to raise funds for the hospital. In addition to this the Committee organise raffles, table quizzes, cabarets. The Committee also arrange outings for the patients to various venues throughout the year.

In the past the Committee has contributed substantial sums of money towards the building of the Day Care Unit, the Patient Day Room and the restructuring of the Mortuary. In 1996, the Committee contributed towards the cost of constructing improved Patient Dining facilities at the Hospital. The Committee are now raising funds for the extension of the Physiotherapy Department at the Hospital which it is hoped will commence in 1998.



14. ENGINEERING SERVICES

In the past year the engineering staff under the direction of Mr. Michael Kinsella, Engineering Officer, have continued to maintain the Hospital at the highest standard and have completed the following works:

- a) Completion of Improved Patient Dining Facilities
- b) General up-keep of hospital and grounds

15. SERVICE REQUIREMENTS

Up-grading of main Kitchen

John Hempenstall
Hospital Manager

17th April 1997