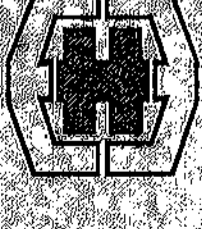


St. Brigid's Home

Crookslin, Co. Dublin

Annual Report



**EASTERN
HEALTH
BOARD**

BORD
SLAINTE
AN OIBTHIR



St. Brigid's Home

Crooksling, Co. Dublin

Annual Report 1998

**REGIONAL LIBRARY AND
INFORMATION SERVICE**

**Acute Hospitals and
Services for the Elderly
Committee Meeting**

18th May 1999

HOSPITAL MANAGEMENT

Matron:	Mrs. Louise Mahon
Medical Officer:	Dr. Siobhan Kierans
Hospital Manager:	Mr. Pat Lane
Engineering Officer:	Mr. Anthony Quinn

C O N T E N T S

1. Historical Background	2
2. Current Services	2
3. Bed Complement	3
<i>Age Breakdown of Patients</i>	3
<i>Patient Dependency</i>	4
<i>Mobility</i>	4
<i>Hospital Activity</i>	4
4. Budget	7
5. Service Details	8
<i>Extended Care</i>	8
<i>Intermittent/Respite Care</i>	8
6. Day Care Facilities	9
7. Physiotherapy	10
8. Chiropody Services	11
9. Diversional Therapy	10
10. Nutritional Adviser	12
11. Nursing Report	12
<i>Staff Training</i>	13
<i>Inservice Training</i>	14
12. Community Employment Programme	15
13. Fund Raising	15
14. Community Involvement	16
15. Maintenance	16
16. Service Needs	16

1. HISTORICAL BACKGROUND

St. Brigid's Home is located on the main Dublin/Blessington Road approximately four miles from Tallaght. Originally built to provide treatment for persons suffering from tuberculosis, it closed in 1953 and it was re-designated in 1959 to provide for the care of elderly patients. The Home today provides for the care of 150 residents.

2. CURRENT SERVICES

The Home has a bed complement of 150. Patients are referred to the Home following assessment by the various Departments of Medicine for The Elderly in the Acute Hospitals. In conjunction with community based services and to complement the Community Ward Teams, the Home also provides a respite/intermittent care service which allows the elderly remain in their home for as long as possible while affording a much valued break to the carer.



3. BED COMPLEMENT

Long Stay	146
Respite	4
Total	150



Age Breakdown of Patients

<i>Years</i>	
65-70	10
71-80	42
81-90	75
91-100	20
100+	0
Total	147



Patient Dependency as at 31/12/98

Continent	32
Doubly Incontinent	82
Singly Incontinent	33
Dress Themselves	28
Help with Dressing	119
Feed Themselves	85
Help with Feeding	62
Blind Totally	2
Poor Sight	100
Deaf Totally	2
Poor Hearing	91

Mobility

Mobile	62
Walking Aids	34
Immobile	51
Total	147

Hospital Activity

Admissions	1997	1998
Long Stay	76	60
Respite	35	29
Total	111	89
Deaths/Discharges	105	91
Bed Occupancy		
Occupied Bed Days	53,478	53,964
% Occupancy	97.7%	98.6%



Source of Admissions	1997	1998
Home	83	70
Adelaide Hospital	1	0
Meath Hospital	4	1
Tallaght Hospital	0	2
St. James' Hospital	17	13
Other General Hospitals	1	0
Other EHB Homes	1	0
Private Nursing Homes	0	3
Psychiatric Services	3	0
Other	1	0
Total	111	89





4. BUDGET 1998

Pay	2,483,000
Non-Pay	576,000
Total	3,059,000
Less Income	500,000
Total	2,559,000
Average Daily Cost (Gross)	Ir£56.68
Average Daily Cost (Net)	Ir£47.42

Included in the non-pay is Ir£150,000 for the setting up and equipping of the new Day Centre

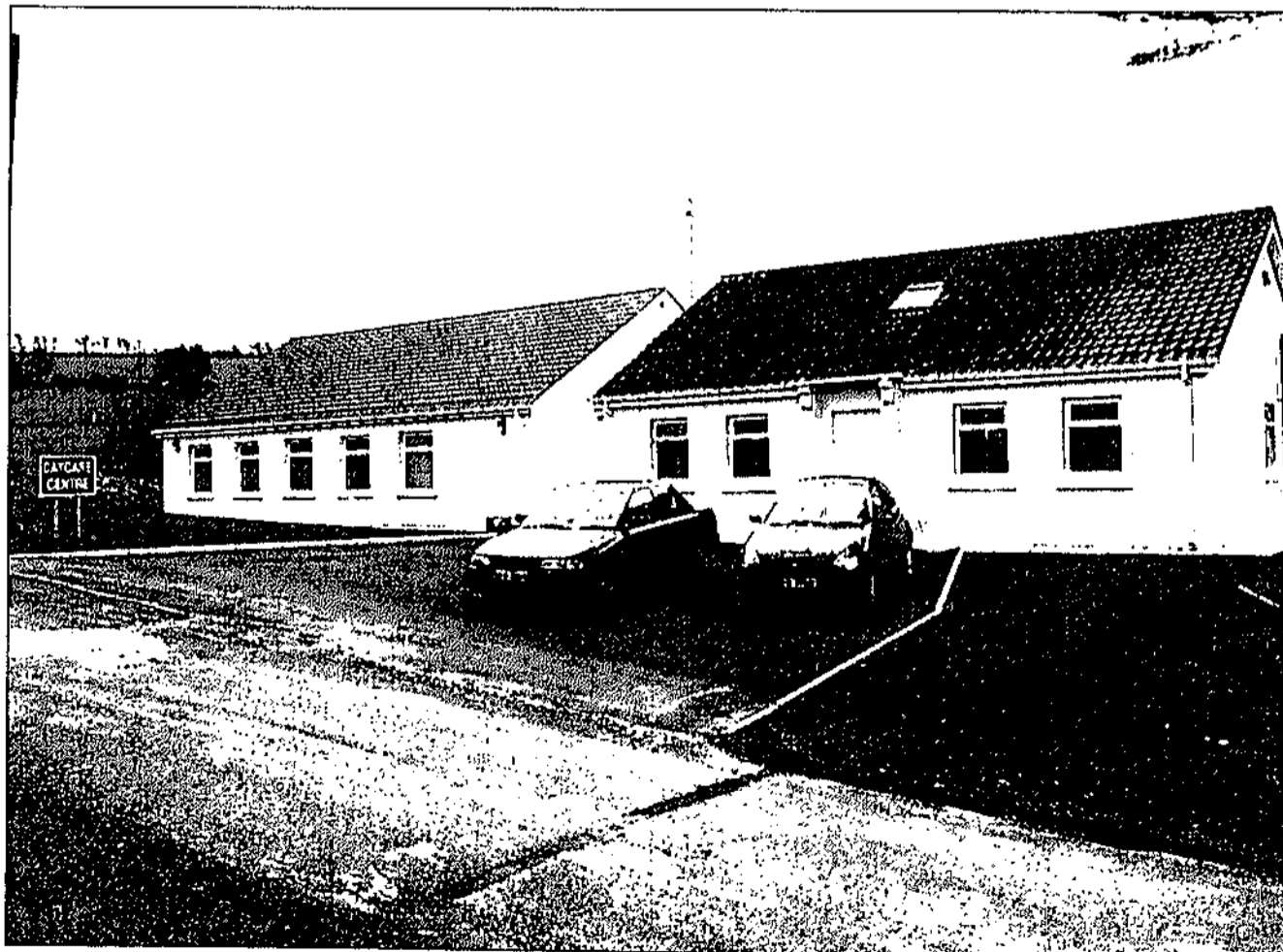
5. SERVICE DETAILS

Extended Care - 146 Beds

Patients who have been medically assessed by a Consultant Geriatrician and the multi-disciplined team in the appropriate Department of Medicine for the Elderly as being in need of long-term care are admitted to one of the extended care wards in the Home.

Intermittent/Respite Care - 4 Beds

Patients wishing to avail of short term or respite care are referred to St. Brigid's by the appropriate Department of Medicine for the Elderly or the Community Care services as appropriate. This service gives carers an opportunity to avail of planned breaks and results in elderly patients remaining in their own environment for as long as possible. The service is also available to carers in emergency situations where they may be unable to care for an elderly relative due to unforeseen circumstances. It should be noted that the service has proved to be a very valuable service and is a tremendous support in maintaining the elderly at home. There is a flexible approach to the number of beds available for respite care at any given time.



6. DAY CARE FACILITIES

The budget allocation in 1998 included Ir£150,000 for the setting up and purchase of equipment for this new facility. Whilst the renovations were taking place on the buildings a temporary Day Care Facility was put in place in the solarium of Unit D, which opened in May 1998.

The frequency of attendance depends on the individual needs of patients. However, the objective is that each patient attends at least once a week. The total number of attendances from the catchment areas listed below in 1998 was as follows:

Blessington / Brittas / Manor Kilbride (2 Days per week)	366
Saggart / Tallaght (2 Days per week)	391
Clondalkin (1 Day per week)	171
Total	928

Attendances at the Day Care Unit are arranged from the lists drawn up by the Public Health Nurses in close co-operation with General Practitioners. This facility also caters for Patients discharged from Acute Hospitals who would benefit from the services provided at the Day Care Centre. Persons attending receive a range of services, which include Medical, Nursing, Physiotherapy, and Chiropody.

A main meal and snacks are provided as are a range of personal services including, bathing, hairdressing and laundry. Transportation to the Day Centre is provided by the Eastern Health Board or private means.

The availability of this service undoubtedly assists in maintaining older persons in their community who would otherwise have to be admitted to Long Term Care.

7. PHYSIOTHERAPY

A sessional physiotherapy service is available at the Home. The provision of this service enables residents to retain their mobility for as long as possible, thereby enhancing their quality of life.

All residents are reviewed on a monthly basis ensuring the continuity of an adequate care programme. The total number of treatments in 1997 and 1998 were as follows. Unfortunately since November 1998 no physiotherapist has been available to the Home and efforts are continuing to source a replacement physiotherapist.

<i>1997</i>	<i>1998</i>
310	287



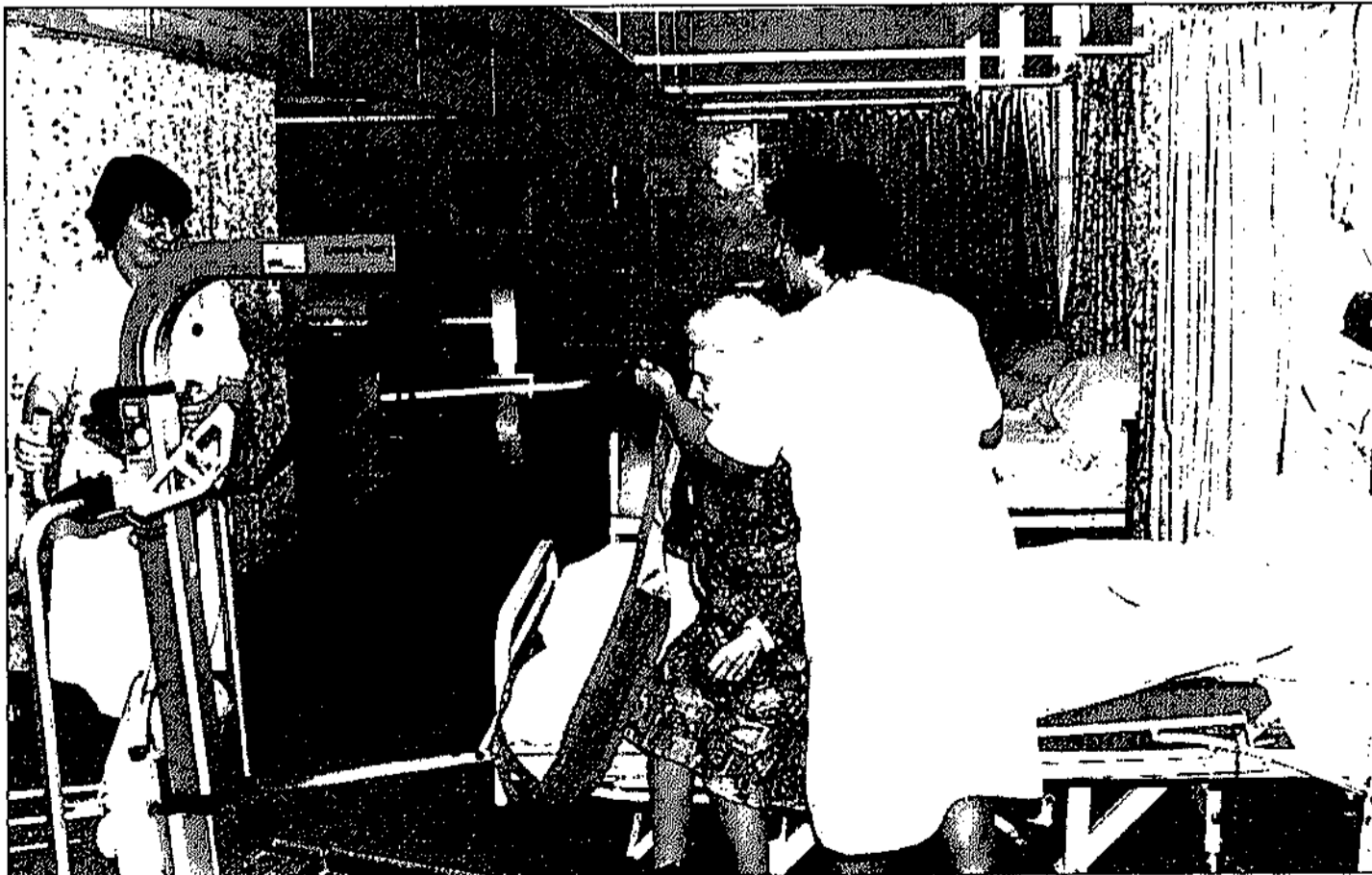
8. CHIROPODY SERVICES

A sessional chiropody service is provided for patients at the Home, which is flexible to meet demands. The provision of this service is a key element in the total rehabilitation process and is of benefit to residents to retain their mobility. The Chiropodist attends for one three hour session each week. The total number of treatments carried out in 1997 and 1998 were as follows:

1997	1998
642	564

9. DIVERSIONAL THERAPY

Diversional Therapy plays a vital role in patient orientation as well as providing a physically, socially and educationally stimulating environment for residents. In the making of soft toys, rugs etc., this service also encourages patients to use their creative talents. Items made by patients are sold at Christmas and on the Annual Walk Day. Proceeds from sales go to the Patient's Comfort's Fund.



10. NUTRITIONAL ADVISER

The Home avails of the services of the Board's Nutritional Adviser for the Elderly. The Nutritional Adviser has visited the Hospital and advised on the dietary needs of patients. Follow up visits are made to meet the ongoing requirements of the residents.

11. NURSING REPORT

Nursing Administration

Louise Mahon	<i>Matron</i>
Breda Waldron	<i>Assistant Matron</i>
Nuala Murphy	<i>Night Sister</i>

Ward Sisters/Managers

Ann Kerr	Ann O'Sullivan
Marie McChesney	Williamina Reynolds
Eileen Maher	Alice Harding
Doreen Kelly	





Staff Development and Training

The past twelve months have been a challenging time for the Nursing Department, which has experienced difficulty in recruiting and retaining Nurses.

Education has become a high priority.

Educational priorities for staff are:

- ❑ Lifting and Handling
- ❑ C.P.R.
- ❑ Computer Training
- ❑ Use of Hospital Equipment

St. Brigid's is one of the sites involved in a quality initiative project designed to support Nurses to develop their nursing practice. Study days are ongoing in conjunction with Nursing Research and Development Department.

Individual Nurses have been Accommodated to Attend the Following Courses:

- | | |
|--|---|
| ❑ Bachelor of Nursing Studies | ❑ Diploma in Management |
| ❑ Diploma in Wound Care | ❑ Wound Care Management |
| ❑ Manual Handling Training for Trainer | ❑ Promotion of Continence and Incontinence Management |
| ❑ Research and Development | |
| ❑ Introduction to Computers | |



Inservice Training

- | | |
|-----------------------------|------------------------------|
| 11 Health and Safety | 11 Infection Control |
| 11 Care Plans | 11 Pain Management |
| 11 Diabetic Foot | 11 Accountability and Ethics |
| 11 Caring for the Carer | 11 Sexuality in the Elderly |
| 11 Nutrition in the Elderly | 11 Women's Issues |
| 11 Peg Feeding Management | |

An aromatherapy massage project with medical approval was piloted on Unit E. The result proved beneficial to all patients treated. This project was supported by the Department of Research and Development who in turn received a positive response for the overall concept from the Director of Services for the Elderly.

Care Assistants/Attendant Staff

In-service education programmes have been run and are ongoing in order to meet the needs of the skill mix within the Home. The co-operation of all staff concerned is much appreciated.

12. COMMUNITY EMPLOYMENT PROGRAMME

The Community Employment Scheme commenced in February 1995 initially to provide care assistants and provide enhanced ground maintenance and improvements. The scheme has been a major benefit to the Home and the grounds have been extensively developed and improved. In the patient care area the Care Assistants have allowed Nursing and Attendant staff to devote much more individual time on a one to one contact with patients.

13. FUND RAISING

The Fund Raising Committee at St. Brigid's Home continued it's good work over the past year.

In 1998 in excess of £8,700 was raised through the annual sponsored walk, sale of work and carol singing. These funds are utilised in the provision of additional comforts and facilities for our residents.



14. COMMUNITY INVOLVEMENT

St. Brigid's Home is fortunate in so far as the local community has always shown a keen interest in the home and its patients. A local entertainment group provides entertainment for our residents and the Jo-Mac Group provides an annual variety show for residents. Other organisations associated with St. Brigid's Home include the local branch of the Irish Country Women's Association. The Legion of Mary and the Tallaght Garda Community Service.

15. MAINTENANCE

A planned maintenance programme has been followed at the Home over the past number of years.

The following work/improvements were carried out in 1997/1998.

- i) Upkeep of grounds and gardens to a high standard.
- ii) The new oratory was opened in October 1997.
- iii) A new steamer/convect oven purchased for main kitchen.

16. SERVICE NEEDS

Service needs identified for 1999:

- ii) Painting of the Solarium in units A, B and E.
- ii) Continuation of the window replacement programme.
- ii) Installation of patients showers in units A, B and E.
- ii) Replacement of washing machine in the laundry.
- ii) Replacement of dish washer in Unit B.
- ii) Refurbishment of ward kitchens.
- ii) The continuation of the bed replacement programme.

Pat Lane
Hospital Manager.

May 1999.