

Long-Stay Activity Statistics

1997



**Prepared by:
The Information Management Unit
Department of Health and Children
Hawkins House
Hawkins Street
Dublin 2
Republic of Ireland**

Contents

	Page
List of Tables	ii
List of Figures	iv
Introduction	1
Section B Survey Results by Category of Long-Stay Unit	3
Section C Survey Results by Health Board Area	13
Section D Summary of Individual Long-Stay Units by Health Board and Unit Category	22

List of Tables

Table Number	Title	Page
1	Response Rate to Survey of Long-Stay Units by Health Board for 1997	1
B1	Long-Stay Unit by Category: Number of Beds Available, Number of Patients and Percentage of Beds Occupied at 31 December 1997	3
B2	Long-Stay Units by Category: Percentage Distribution of Patients Resident at 31 December 1997 by Gender	4
B3	Long-Stay Units by Category: Percentage Distribution of Patients Resident at 31 December 1997 by Age	5
B4	Long-Stay Units by Category: Percentage Distribution of Male Patients Resident at 31 December 1997 by Age	5
B5	Long-Stay Units by Category: Percentage Distribution of Female Patients Resident at 31 December 1997 by Age	6
B6	Long-Stay Units by Category: Percentage Distribution of Patients Resident at 31 December 1997 by Level of Dependency	7
B7	Long-Stay Units by Category: Percentage Distribution of Patients Resident at 31 December 1997 by Medico/Social Status	8
B8	Long-Stay Units by Category: Percentage Distribution of Patients Admitted During 1997 by Source of Admission	9
B9	Long-Stay Units by Category: Percentage Distribution of Patients Discharged During 1997 by Destination of Discharge	10
B10	Long-Stay Units by Category: Percentage Distribution of Discharged (including Deceased) During 1997 by Length of Stay	11

C1	Long-Stay Unit by Health Board: Number of Beds Available, Number of Patients and Percentage of Beds Occupied at 31 December 1997	13
C2	Long-Stay Units by Health Board: Percentage Distribution of Patients Resident at 31 December 1997 by Gender	14
C3	Long-Stay Units by Health Board: Percentage Distribution of Patients Resident at 31 December 1997 by Age	15
C4	Long-Stay Units by Health Board: Percentage Distribution of Male Patients Resident at 31 December 1997 by Age	15
C5	Long-Stay Units by Health Board: Percentage Distribution of Female Patients Resident at 31 December 1997 by Age	16
C6	Long-Stay Units by Health Board: Percentage Distribution of Patients Resident at 31 December 1997 by Level of Dependency	16
C7	Long-Stay Units by Health Board: Percentage Distribution of Patients Resident at 31 December 1997 by Medico/Social Status	17
C8	Long-Stay Units by Health Board: Percentage Distribution of Patients Admitted During 1997 by Source of Admission	19
C9	Long-Stay Units by Health Board: Percentage Distribution of Patients Discharged During 1997 by Destination of Discharge	20
C10	Long-Stay Units by Category: Percentage Distribution of Discharged (including Deceased) During 1997 by Length of Stay	21
D1	Eastern Health Board Area Summary of Individual Long-Stay Units 1997	22
D2	Midland Health Board Area Summary of Individual Long-Stay Units 1997	26
D3	Mid-Western Health Board Area Summary of Individual Long-Stay Units 1997	28
D4	North-Eastern Health Board Area Summary of Individual Long-Stay Units 1997	30
D5	North-Western Health Board Area Summary of Individual Long-Stay Units 1997	32
D6	South-Eastern Health Board Area Summary of Individual Long-Stay Units 1997	34
D7	Southern Health Board Area Summary of Individual Long-Stay Units 1997	36
D8	Western Health Board Area Summary of Individual Long-Stay Units 1997	39

Figure Number	Title	Page
B1	Long-Stay Units by Category: Percentage Distribution of Patients Resident at 31 December 1997 by Gender	4
B2	Long-Stay Units by Category: Percentage Distribution of Patients Resident at 31 December 1997 by Age and Gender	6
B3	Long-Stay Units by Category: Percentage Distribution of Patients Resident at 31 December 1997 by Level of Dependency	7
B4	Long-Stay Units by Category: Percentage Distribution of Patients Admitted During 1997 by Source of Admission	9
B5	Long-Stay Units by Category: Percentage Distribution of Patients Discharged During 1997 by Destination of Discharge	11
B6	Long-Stay Units by Category: Percentage Distribution of Discharged (including Deceased) During 1997 by Length of Stay	12
C1	Long-Stay Units by Health Board: Percentage Distribution of Patients Resident at 31 December 1997 by Gender	14
C2	Long-Stay Units by Health Board: Percentage Distribution of Patients Resident at 31 December 1997 by Level of Dependency	17
C3	Long-Stay Units by Health Board: Percentage Distribution of Patients Resident at 31 December 1997 by Medico/Social Status	18
C4	Long-Stay Units by Health Board: Percentage Distribution of Patients Admitted During 1997 by Source of Admission	19
C5	Long-Stay Units by Health Board: Percentage Distribution of Patients Discharged During 1997 by Destination of Discharge	20
C6	Long-Stay Units by Health Board: Percentage Distribution of Discharged (including Deceased) During 1997 by Length of Stay	21

Introduction and Summary of Results

This report presents data collected through a survey of long-stay units in 1997. The aim of the survey is to provide statistics on the number of beds available for long-term care, how the beds are used and the types of patients who occupy these beds.

In order to present the data this report has been divided into a number of sections. This introductory section examines how data was collected and analysed and gives a summary of the results.

There is no Section A in this report. Section A would contain data on the older population from the 1996 Census and Eurostat and can be found in Section A of the 2000 report.

Section B presents the data according to category/type of unit and Section C presents data according to health board. An examination of gender, age, dependency, medico/social status, admissions, discharges and length of stay is undertaken in these two sections. Section D looks at individual long-stay units within each health board according to type of unit. Details of number of beds, patients, discharges and admissions are presented.

Methodology

Health boards maintain a register of long-stay units/nursing homes in their health board area. At the request of the Department of Health and Children, questionnaires were issued by health boards to each long-stay unit within their area. Units that did not respond were followed up with letter and additional questionnaire. Table A1 below gives the response rate (i.e., number of questionnaires returned by long-stay units as a percentage of total number of registered long-stay units within each health board) by health board.

Table 1
Response Rate to Survey of Long-Stay Units by Health Board for 1997

	EHB	MHB	MWHB	NEHB	NWHB	SEHB	SHB	WHB	Ireland
1997	82.0	100.0	100.0	94.3	87.1	76.1	87.1	97.1	86.6

In 1997, 453 questionnaires were returned out of a total of 523 giving a response rate of 86.6 percent.

Responses were coded and entered into a database and analysed using a statistical software package. Data were validated to ensure accuracy and completeness. Where missing data or inconsistencies were identified, clarification was sought from the relevant long-stay unit. In some cases, it was not possible to obtain clarification. In this instance,

where possible, numbers were allocated to categories according to the overall national distribution observed for that category. For example, if information on the number of patients within each dependency category were missing, cases were allocated according to the national distribution rate for this category.

Summary Results

Bed Occupancy: The percentage of beds occupied at 31 December 1997 was 90.9 percent.

Sex: The majority of patients in long-stay units were female (65.6%).

Age: The majority of patients are aged 80 years or over (63.1%). A larger proportion of women (69.1%) are in this age group compared to men (51.9%).

Level of Dependency: As level of dependency increases so does the proportion of patients in each category; 12.% have been categorised as low dependency, 21.5% as medium dependency, 28.9% as high dependency and 36.7% as maximum dependency.

Medico / Social Status: The single largest percentage of patients fall into the chronic physical illness category (36.1%), followed by mental infirmity/dementia (18.5%), social reasons (14%) and physical disability (13.8%).

Admissions and Discharges: Over half (54.8%) of patients were admitted into a long-stay unit from the community during 1997. Another 36.8 percent were admitted from acute hospitals. With regard to discharges during 1997, nearly two thirds (62.1%) were discharged back into the community and another 21.7% were deceased.

Length of Stay: Over three-quarters (77.7%) of patients were resident for less than three months during 1997. Only 12% of patients were resident for a year or more.

Section B

Survey Results by Category of Long-Stay Unit

This section examines data collected from the long-stay unit survey by category of unit. Five categories are used:

- Health Board Geriatric Home or Hospital
- Health Board Welfare Home
- Health Board District or Community Hospital
- Voluntary Geriatric Home or Hospital
- Private Nursing Home

Respondents to the survey select the category which applies to long-stay unit of which they are proprietor or which they are managing.

Table B1 below gives details of the number of beds, respite beds, patients and the occupancy rate of long-stay units according to the above five categories. The overall occupancy rate for long-stay units is 90.9%. However this varies from 79.3 percent within health board welfare homes to 93.8 percent within voluntary geriatric homes or hospitals. Approximately one third of patients (31.8%) were resident in health board geriatric homes or hospitals and another third (33.7%) were resident in private nursing homes with the remaining third distributed among the remaining categories of long-stay units.

Table B1

**Long-Stay Units by Category:
Number of Beds available, number of Patients and the Percentage of Beds Occupied
at 31 December 1997**

CATEGORY OF UNIT	Beds	Respite Beds	Total Beds	% of Beds	Patients	% of Patients	Percentage Occupancy
Health Board Geriatric Home / Hospital	6311	283	6594	31.6	6042	31.8	91.6
Health Board Welfare Home	1970	57	2027	9.7	1607	8.5	79.3
Health Board Community / District Hospital	1435	123	1558	7.5	1399	7.4	89.8
Voluntary Geriatric Home / Hospital	3676	103	3779	18.1	3544	18.7	93.8
Private Nursing Home	6713	219	6932	33.2	6389	33.7	92.2
TOTAL	20105	785	20890	100.0	18981	100.0	90.9

Gender and Age

Tables B2 to B5 and figures B1 and B2 look at the gender and age distribution of patients within long-stay units.

Almost two-thirds of patients are female. This percentage break-down varies by unit type from 57 percent within health board geriatric home to 72.7 percent in private nursing homes.

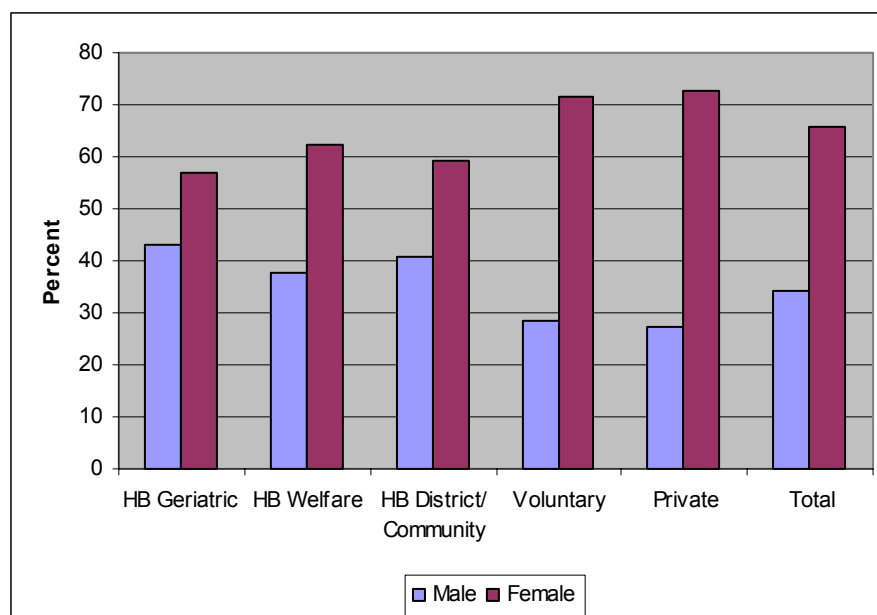
Table B2

**Long-Stay Units by Category:
Percentage Distribution of Patients Resident at 31 December 1997 by Gender**

CATEGORY OF UNIT	Male	Female	Total
Health Board Geriatric Home / Hospital	43.0	57.0	100
Health Board Welfare Home	37.8	62.2	100
Health Board Community / District Hospital	40.8	59.2	100
Voluntary Geriatric Home / Hospital	28.3	71.7	100
Private Nursing Home	27.3	72.7	100
TOTAL	34.4	65.6	100

Figure B1

**Long-Stay Units by Category:
Percentage Distribution of Patients Resident at 31 December 1997 by Gender**



The majority (63.1%) of patients are 80 years of age or over. However, female patients show an older age profile compared to male patients. Over two-thirds (69.1%) of female patients are 80 years of age or over while only just over half (51.9%) of male patients fall in this age category.

Table B3

**Long-Stay Units by Category:
Percentage Distribution of Patients Resident at 31 December 1997 by Age**

CATEGORY OF UNIT	Less than 40 Years	40-64 Years	65-69 Years	70-74 Years	75-79 Years	80-84 Years	85 Years and Over	Total
Health Board Geriatric Home / Hospital	0.4	5.8	7.0	12.0	19.0	23.8	32.1	100
Health Board Welfare Home	0.1	3.5	5.7	11.3	17.7	23.9	37.8	100
Health Board Community / District Hospital	1.2	6.0	5.0	10.2	18.8	25.4	33.5	100
Voluntary Geriatric Home / Hospital	1.0	5.5	4.2	8.1	14.3	23.9	42.9	100
Private Nursing Home	0.2	3.0	3.3	7.8	16.4	28.1	41.1	100
TOTAL	0.5	4.6	5.0	9.7	17.1	25.4	37.7	100

Table B4

**Long-Stay Units by Category:
Percentage Distribution of Male Patients Resident at 31 December 1997 by Age**

CATEGORY OF UNIT	Less than 40 Years	40-64 Years	65-69 Years	70-74 Years	75-79 Years	80-84 Years	85 Years and Over	Total
Health Board Geriatric Home / Hospital	0.5	7.7	9.2	15.5	20.2	22.9	24.0	100
Health Board Welfare Home	0.2	3.5	6.6	16.6	23.4	22.9	27.0	100
Health Board Community / District Hospital	1.4	8.1	6.8	12.8	18.2	28.4	24.3	100
Voluntary Geriatric Home / Hospital	1.8	9.4	7.5	12.3	15.7	25.0	28.4	100
Private Nursing Home	0.3	5.4	5.3	11.6	18.6	24.3	34.5	100
TOTAL	0.7	7.0	7.4	13.8	19.2	24.1	27.8	100

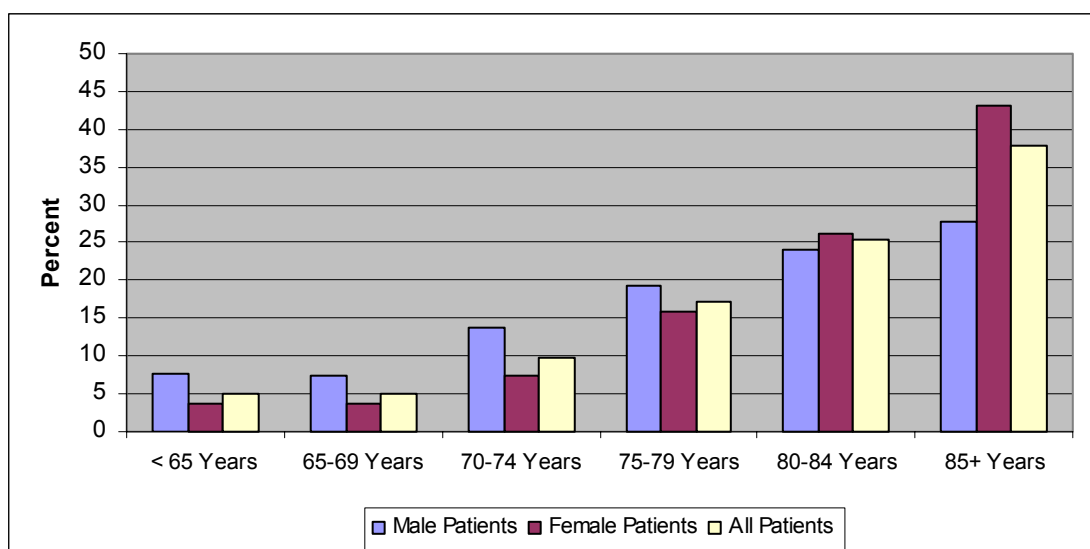
Table B5

**Long-Stay Units by Category:
Percentage Distribution of Female Patients Resident at 31 December 1997by Age**

CATEGORY OF UNIT	Less than 40 Years	40-64 Years	65-69 Years	70-74 Years	75-79 Years	80-84 Years	85 Years and Over	Total
Health Board Geriatric Home / Hospital	0.2	4.3	5.4	9.4	18.0	24.5	38.2	100
Health Board Welfare Home	0.0	3.5	5.1	8.1	14.3	24.5	44.4	100
Health Board Community / District Hospital	1.1	4.6	3.7	8.3	19.2	23.3	39.7	100
Voluntary Geriatric Home / Hospital	0.7	3.9	3.0	6.5	13.8	23.5	48.6	100
Private Nursing Home	0.2	2.1	2.6	6.4	15.6	29.6	43.6	100
TOTAL	0.4	3.4	3.7	7.5	16.0	26.1	43.0	100

There is also a variation in the percentage of patients aged 80 years and over among categories of unit. Almost 70 percent (69.2%) of patients in private nursing homes are in the two oldest age categories compared to 55.9 percent of patients in health board geriatric homes or hospitals. This can partially be explained by the different gender composition of unit categories and the variance in the age profiles of male and female patients.

**Figure B2
Long-Stay Units by Category:
Percentage Distribution of Patients Resident at 31 December 1997by Age and Gender**



Dependency

Respondents were asked to indicate how their patients were distributed across four dependency levels of low, medium, high and maximum.

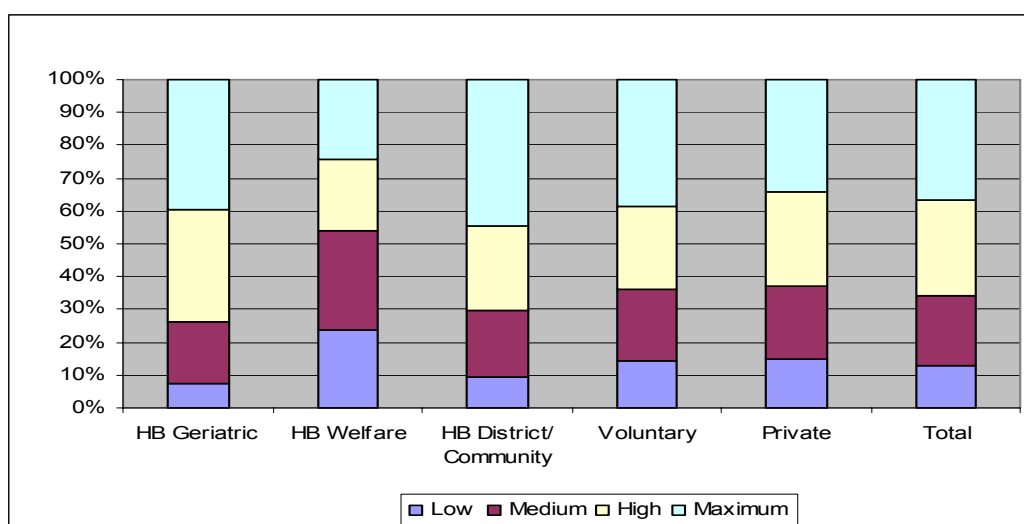
Table B6 gives details of the distribution of patients according to their dependency category and by long-stay unit category. The largest proportion of patients are in the maximum dependency category which means they require a high degree of nursing care and assistance.

Levels of dependency vary across long-stay unit category with health board geriatric homes or hospitals having the largest proportion (73.9%) of patients in the high or maximum dependency category and health board welfare homes having the lowest proportion (46.0%) in these two categories.

Table B6
Long-Stay Units by Category:
Percentage Distribution of Patients Resident at 31 December 1997
by Level of Dependency

CATEGORY OF UNIT	Low	Medium	High	Maximum	Total
Health Board Geriatric Home / Hospital	7.6	18.5	34.2	39.7	100
Health Board Welfare Home	23.7	30.4	21.7	24.3	100
Health Board Community / District Hospital	9.5	20.2	25.7	44.6	100
Voluntary Geriatric Home / Hospital	14.4	21.7	25.4	38.5	100
Private Nursing Home	14.8	22.4	28.5	34.4	100
TOTAL	12.8	21.5	28.9	36.7	100

Figure B3
Long-Stay Units by Category:
Percentage Distribution of Patients Resident at 31 December 1997
by Level of Dependency



Medico/Social Status

Respondents were asked to categorise their patients according to their Medico/Social Status (i.e., the main reason for residence) at 31st December 1997. Nine categories were provided:

- Chronic Mental illness
- Chronic Physical Illness
- Convalescence or Rehabilitation
- Mental Infirmity or Dementia
- Mental Handicap
- Social Reasons
- Terminal Illness
- Other Reasons

Among all long-stay units the category with the largest proportion of patients was Chronic Physical Illness (36.1%) followed by Mental Infirmity or Dementia (18.5%). Together these two reasons accounted for approximately fifty percent of cases in all categories of long-stay units except for health board welfare homes. In this instance, 42.2 percent of patients fell into these two categories and another 30 percent were in residence due to Social Reasons.

Table B7

**Long-Stay Units by Category:
Percentage Distribution of Patients Resident at 31 December 1997
by Medico/Social Status**

CATEGORY OF UNIT	Chronic Mental Illness	Chronic Physical Illness	Conval-escence/ Rehab-ilitation	Mental Infirmity/ Dementia	Physical Disability	Mental Handicap	Social Reasons	Terminal Illness	Other	Total
Health Board Geriatric Home / Hospital	8.2	45.3	4.3	16.3	10.3	2.3	10.0	1.1	2.3	100
Health Board Welfare Home	7.3	33.4	2.9	8.8	10.3	2.4	30.7	0.7	3.4	100
Health Board Community / District Hospital	3.4	47.0	11.0	13.9	7.5	1.3	6.1	5.9	3.8	100
Voluntary Geriatric Home / Hospital	4.6	36.6	1.8	18.8	18.6	1.3	10.7	0.9	6.7	100
Private Nursing Home	7.4	25.4	4.0	23.8	16.8	1.3	17.1	1.3	3.0	100
TOTAL	6.8	36.1	4.1	18.5	13.8	1.7	14.0	1.5	3.5	100

Admissions

Respondents were asked about the number of admission they had had during 1997 and the source of these admissions. The following categories were provided:

- From the community (e.g., the patient's home)
- From an acute hospital
- From another long-stay hospital / home (including private nursing homes)
- From other sources

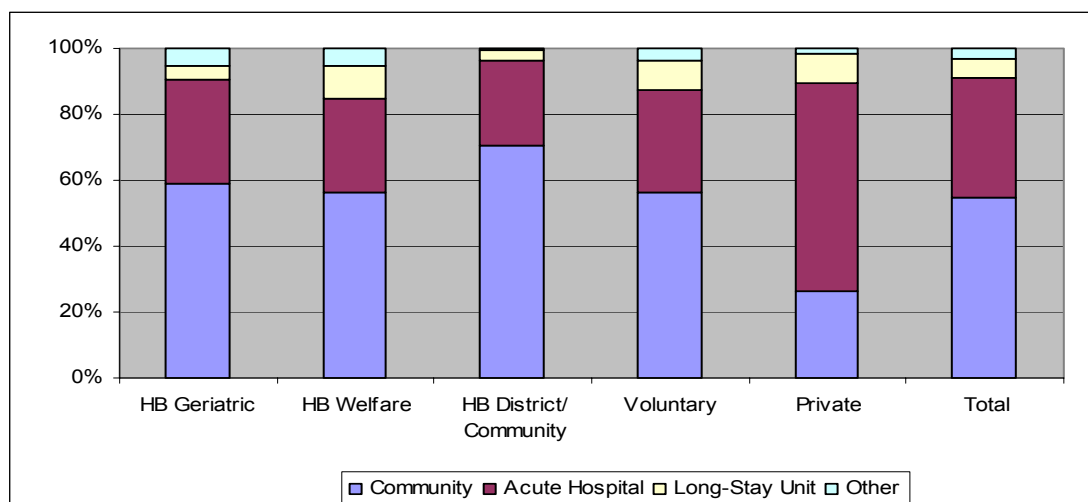
The majority of admissions (54.8%) during 1997 came from the community. This was the single largest source of admissions for all categories of long-stay units except for private nursing homes. In this case, the 63.4 percent of admissions came from acute hospitals.

Table B8

**Long-Stay Units by Category:
Percentage Distribution of Patients Admitted During 1997 by Source of Admission**

CATEGORY OF UNIT	Community	Acute Hospital	Long-Stay Hospital / Home	Other	Total
Health Board Geriatric Home / Hospital	59.1	31.5	4.3	5.1	100
Health Board Welfare Home	56.2	28.5	9.8	5.4	100
Health Board Community / District Hospital	70.6	25.7	3.3	0.4	100
Voluntary Geriatric Home / Hospital	56.4	30.8	8.9	3.9	100
Private Nursing Home	26.3	63.4	8.6	1.8	100
TOTAL	54.8	36.3	5.7	3.2	100

**Figure B4
Long-Stay Units by Category:
Percentage Distribution of Patients Admitted During 1997 by Source of Admission**



Discharges

Respondents were asked how many patients were discharged throughout the year and the destination of the patients who were discharged. The categories provided were:

- Into the community
- Into an acute hospital
- Into another long-stay hospital or home
- Other destination
- Deceased

Table B9 and Figure B5 give details of the destination of patients upon discharge. The vast majority of patients (62.1%) were discharged back into the community. The largest proportion of patients from all categories of long-stay unit fell into this category though the proportion varies from 53.8 percent among patients in health board welfare homes to 66.9 percent among patients in health board community or district hospitals.

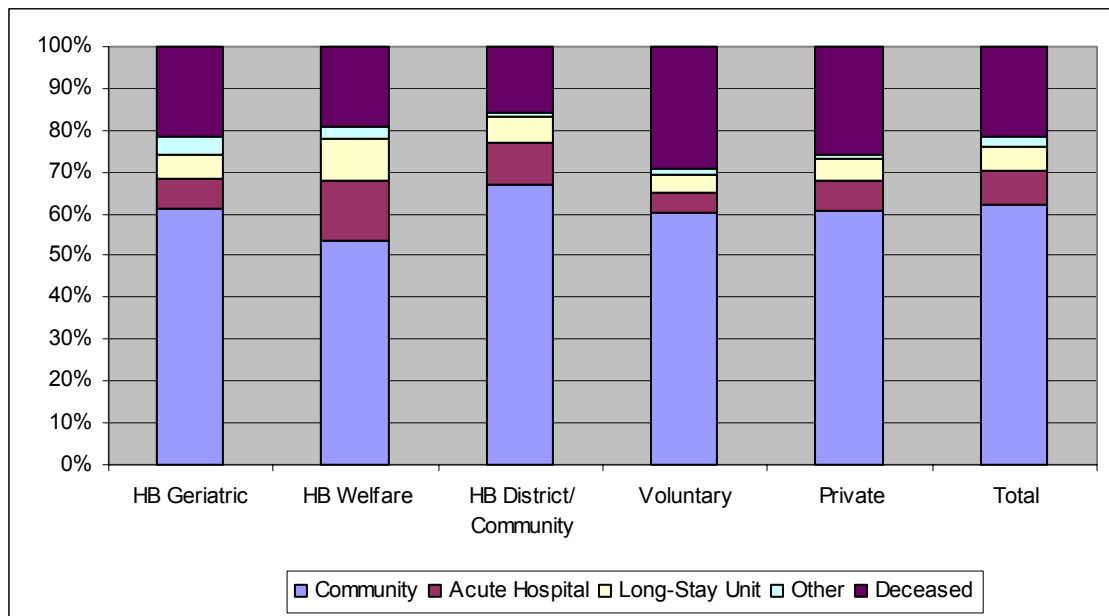
Approximately one fifth of patients (21.7 percent) were discharged on their death. Again there is a variation in this category from 15.8 percent among patients in health board community or district hospitals to 29.3 percent among patients in voluntary geriatric hospitals or homes.

Table B9

**Long-Stay Units by Category:
Percentage Distribution of Patients Discharged During 1997
by Destination of Discharge**

CATEGORY OF UNIT	Community	Acute Hospital	Long-Stay Hospital / Home	Other	Deceased	Total
Health Board Geriatric Home / Hospital	61.4	7.2	5.7	4.0	21.7	100
Health Board Welfare Home	53.8	14.1	10.2	2.9	19.1	100
Health Board Community / District Hospital	66.9	10.1	6.4	0.8	15.8	100
Voluntary Geriatric Home / Hospital	60.1	5.1	4.0	1.5	29.3	100
Private Nursing Home	60.9	7.2	5.2	0.7	26.0	100
TOTAL	62.1	8.0	5.9	2.2	21.7	100

Figure B5
Long-Stay Units by Category:
Percentage Distribution of Patients Discharged During 1997
By Destination of Discharge



Length of Stay

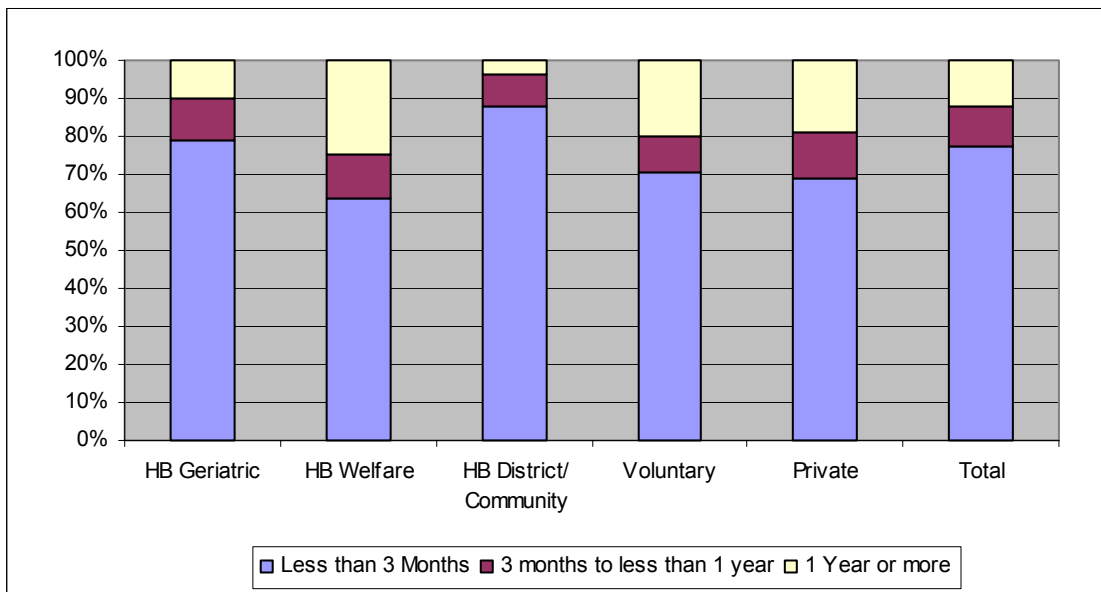
In relation to patients who had been discharged, respondents were asked how long they had resided in their long-stay unit. Over three-quarters of patients (77.7%) resided for less than three months. This varied from 63.6 percent among health board welfare homes to 79.1 percent among patients in health board geriatric homes or hospitals. Table B10 below gives details of patients' length of stay by long-stay unit category.

Table B10
Long-Stay Units by Category:
Percentage Distribution of Patients Discharged (including Deceased) During 1997
by Length of Stay

CATEGORY OF UNIT	Less than 3 Months	3 to <6 Months	6 months to <1 year	1 to <2 years	2 to <4 Years	4 to <6 Years	6 to <10 Years	10 Years and Over	Total
Health Board Geriatric Home / Hospital	79.1	6.6	4.2	3.2	3.2	1.8	1.0	0.8	100
Health Board Welfare Home	63.6	5.8	5.8	6.1	7.4	3.8	4.3	3.0	100
Health Board Community / District Hospital	87.9	6.5	2.0	1.2	1.2	0.5	0.5	0.1	100
Voluntary Geriatric Home / Hospital	70.7	5.9	3.7	4.5	6.2	3.3	3.6	2.2	100
Private Nursing Home	68.8	6.4	5.7	6.2	6.8	3.2	2.2	0.7	100
TOTAL	77.7	6.5	4.0	3.6	3.9	2.0	1.6	0.9	100

Figure B6 re-categorises length of stay into less than three months, three months to less than one year and one year and over. It is clear that there is some variation among the categories of long-stay unit. For example within the health board welfare homes nearly one quarter (24.6%) of patients had a length of stay of one year or more compared to 3.5 percent of patients in the health board community or district hospitals.

Figure B6
Long-Stay Units by Category:
Percentage Distribution of Patients Discharged (including Deceased) During 1997
by Length of Stay



Section C

Survey Results by Health Board Area

Section C re-examines the data collected in the 1997 survey but presents it by health board area.

Almost 30 percent of patients (29.2%) were resident in an Eastern Health Board long-stay unit at 31 December 1997. The Midland Health Board recorded the lowest proportion of patients at 6.9 percent.

The overall occupancy rate among long-stay units was 90.9 percent. This varied from 82.9 percent among Southern Health Board long-stay units to 94.7 percent among South-Eastern long-stay units.

Table C1 below gives details of numbers of beds, respite beds, patients, percentage of beds, percentage of patients and percentage occupancy by health board.

Table C1

**Long-Stay Units by Health Board
Number of Beds available, number of Patients and the Percentage of Beds Occupied
at 31 December 1997**

Health Board	Beds	Respite Beds	Total Beds	% of Beds	Patients	% of Patients	Percentage Occupancy
Eastern	5731	314	6045	28.9	5533	29.2	91.5
Midland	1363	61	1424	6.8	1312	6.9	92.1
Mid-Western	2141	55	2196	10.5	1988	10.5	90.5
North-Eastern	1409	97	1506	7.2	1410	7.4	93.6
North-Western	1423	93	1516	7.3	1414	7.4	93.3
South-Eastern	1897	21	1918	9.2	1817	9.6	94.7
Southern	3328	103	3431	16.4	2843	15.0	82.9
Western	2813	41	2854	13.7	2664	14.0	93.3
TOTAL	20105	785	20890	100	18981	100	90.9

Gender and Age

Tables C2 to C5 and Figures C1 and C2 look at the gender and age distribution of patients within the health boards.

Table C2 gives details of the gender profile of patients within the health boards. Approximately two thirds of patients are female but this varies from 60.6 percent of patients in the North-Western Health Board to 70.6 percent of patients in the Eastern Health Board.

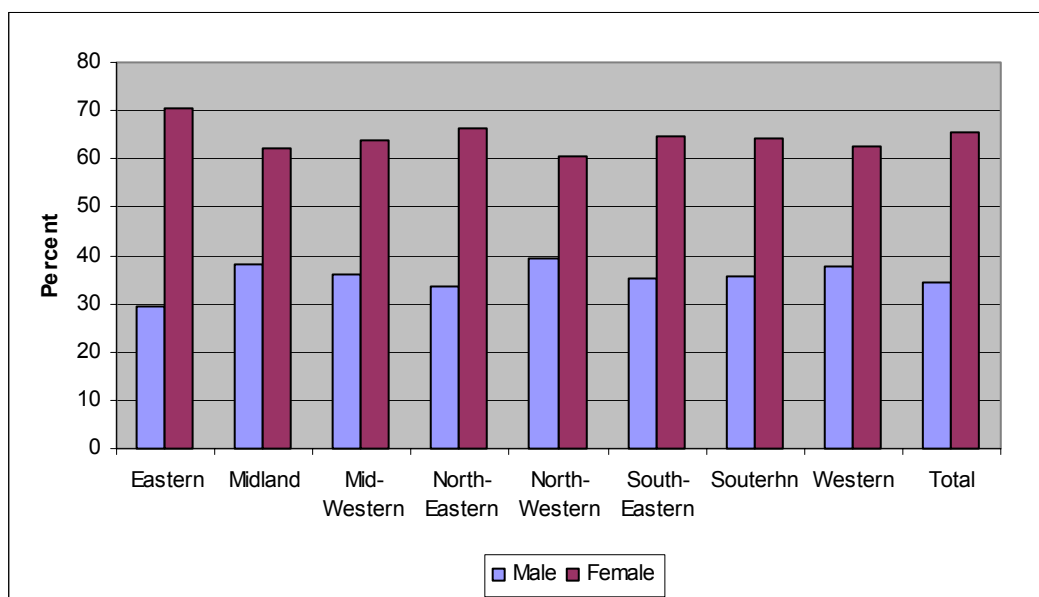
Table C2

**Long-Stay Units by Health Board:
Percentage Distribution of Patients Resident at 31 December 1997 by Gender**

Health Board	Male	Female	Total
Eastern	29.4	70.6	100
Midland	38.0	62.0	100
Mid-Western	36.2	63.8	100
North-Eastern	33.5	66.5	100
North-Western	39.4	60.6	100
South-Eastern	35.2	64.8	100
Southern	35.6	64.4	100
Western	37.6	62.4	100
TOTAL	34.4	65.6	100

Figure C1

**Long-Stay Units by Health Board:
Percentage Distribution of Patients Resident at 31 December 1997 by Gender**



The majority of patients are in the two oldest age categories. The Eastern Health Board has the largest percentage of patients (42.7%) in the 85 years and over age category and the North-Eastern Health Board has the smallest percentage in this category at 31.4%.

Table C3

**Long-Stay Units by Health Board:
Percentage Distribution of Patients Resident at 31 December 1997 by Age**

Health Board	Less than 40 Years	40-64 Years	65-69 Years	70-74 Years	75-79 Years	80-84 Years	85 Years and Over	Total
Eastern	0.8	5.2	4.2	7.6	15.8	23.8	42.7	100
Midland	0.3	5.9	5.6	9.1	16.8	24.9	37.4	100
Mid-Western	0.1	4.0	4.9	10.9	19.8	26.2	34.1	100
North-Eastern	0.3	6.0	6.8	10.9	19.3	25.3	31.4	100
North-Western	0.5	4.4	5.4	11.0	17.1	22.9	38.7	100
South-Eastern	0.3	3.4	5.4	12.2	17.7	26.4	34.7	100
Southern	0.5	4.2	5.0	10.1	16.1	27.8	36.5	100
Western	0.4	3.9	5.0	9.9	17.5	26.6	36.7	100
TOTAL	0.5	4.6	5.0	9.7	17.1	25.4	37.7	100

Table C4

**Long-Stay Units by Health Board:
Percentage Distribution of Male Patients Resident at 31 December 1997 by Age**

Health Board	Less than 40 Years	40-64 Years	65-69 Years	70-74 Years	75-79 Years	80-84 Years	85 Years and Over	Total
Eastern	1.5	8.6	6.4	11.6	16.4	23.8	31.8	100
Midland	0.6	8.8	8.0	13.2	21.2	20.4	27.7	100
Mid-Western	0.3	6.3	7.0	12.9	22.3	24.3	27.0	100
North-Eastern	0.2	9.1	9.9	17.5	23.5	22.0	17.8	100
North-Western	0.5	6.1	7.2	15.6	19.4	22.8	28.4	100
South-Eastern	0.5	5.9	8.6	17.0	20.2	22.3	25.5	100
Southern	0.4	6.9	8.4	13.0	17.1	28.2	26.0	100
Western	0.6	4.3	6.4	14.4	19.9	24.8	29.7	100
TOTAL	0.7	7.0	7.4	13.8	19.2	24.1	27.8	100

Table C5

**Long-Stay Units by Health Board:
Percentage Distribution of Female Patients Resident at 31 December 1997 by Age**

Health Board	Less than 40 Years	40-64 Years	65-69 Years	70-74 Years	75-79 Years	80-84 Years	85 Years and Over	Total
Eastern	0.5	3.8	3.3	5.9	15.5	23.8	47.2	100
Midland	0.1	4.1	4.1	6.5	14.1	27.7	43.4	100
Mid-Western	0.0	2.8	3.8	9.7	18.4	27.3	38.1	100
North-Eastern	0.3	4.5	5.2	7.5	17.2	27.0	38.3	100
North-Western	0.5	3.3	4.3	7.9	15.6	23.0	45.4	100
South-Eastern	0.2	2.0	3.7	9.5	16.4	28.5	39.8	100
Southern	0.5	2.7	3.1	8.4	15.6	27.5	42.3	100
Western	0.3	3.7	4.1	7.2	16.1	27.7	40.9	100
TOTAL	0.4	3.4	3.7	7.5	16.0	26.1	43.0	100

Dependency

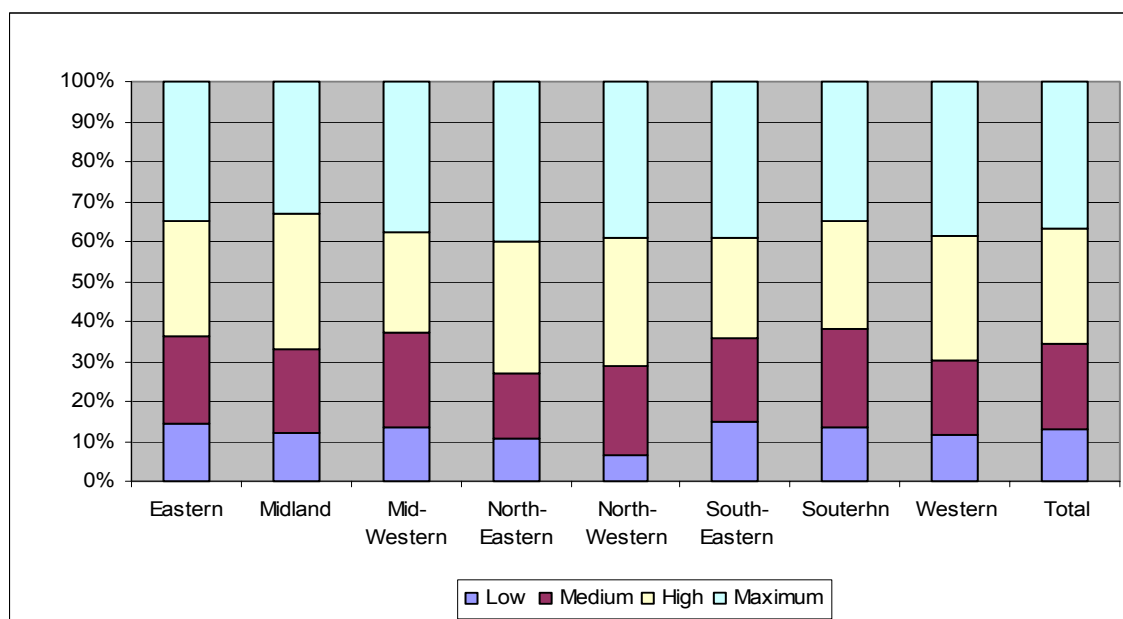
Table C6 and figure C2 below gives details of dependency levels among patients within each health board. Over two thirds of patients are either in the high dependency or maximum dependency category. There is some variation across health boards. Within the Southern Health Board 62 percent of patients are either in the high dependency category or the maximum dependency category. The same figure for the North-Eastern Health Board is 73.1 percent.

Table C6

**Long-Stay Units by Health Board:
Percentage Distribution of Patients Resident at 31 December 1997
by Level of Dependency**

Health Board	Low	Medium	High	Maximum	Total
Eastern	14.5	21.9	28.5	35.1	100
Midland	12.0	21.0	34.0	33.1	100
Mid-Western	13.5	23.5	25.1	37.9	100
North-Eastern	10.6	16.3	32.9	40.2	100
North-Western	6.7	22.3	32.0	39.0	100
South-Eastern	14.7	21.0	25.3	39.0	100
Southern	13.5	24.6	27.3	34.7	100
Western	11.4	19.0	30.8	38.8	100
TOTAL	12.8	21.5	28.9	36.7	100

Figure C2
Long-Stay Units by Health Board:
Percentage Distribution of Patients Resident at 31 December 1997
by Level of Dependency



Medico/Social Status

As stated in Section B the single largest proportion of patients are resident in a long-stay unit due to chronic physical illness.

Table C7 gives details of medico/social status of patients within each health board. There is some variation among health boards. For example, 30.3 percent of patients within the North-Western Health Board have a medico/social status of chronic physical illness. Within the North-Eastern Health Board this figure is 42.7 percent.

Table C7
Long-Stay Units by Health Board:
Percentage Distribution of Patients Resident at 31 December 1997
by Medico/Social Status

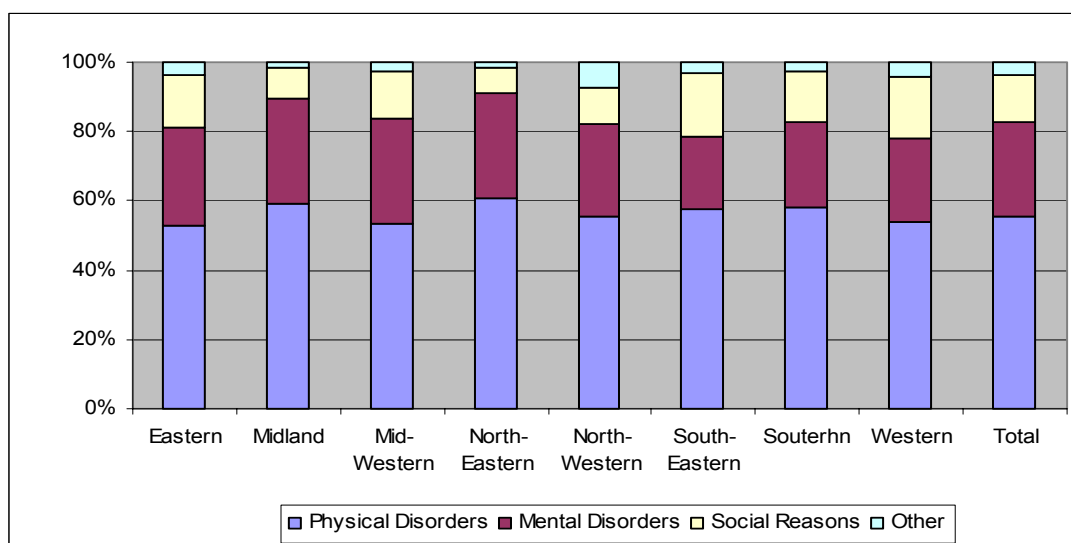
Health Board	Chronic Mental Illness	Chronic Physical Illness	Convalescence / Rehabilitation	Mental Infirmary/ Dementia	Physical Disability	Mental Handicap	Social Reasons	Terminal Illness	Other	Total
Eastern	6.7	33.1	3.5	20.6	15.4	1.1	14.7	1.0	3.9	100
Midland	9.0	39.3	3.5	18.8	14.6	2.5	8.8	1.8	1.7	100
Mid-Western	10.9	38.4	3.5	17.7	10.9	1.7	13.5	0.7	2.8	100
North-Eastern	5.7	42.7	6.4	21.7	10.6	3.3	7.2	0.9	1.6	100
North-Western	7.5	30.3	6.6	17.5	16.3	1.8	10.3	2.2	7.4	100
South-Eastern	5.1	33.4	2.9	14.6	20.0	1.3	18.1	1.4	3.2	100
Southern	5.4	37.4	4.3	18.1	13.8	1.4	14.5	2.4	2.7	100
Western	5.9	39.0	4.3	16.3	8.6	2.3	17.6	1.8	4.2	100
TOTAL	6.8	36.1	4.1	18.5	13.8	1.7	14.0	1.5	3.5	100

Figure C3 below displays the Medico/Social Status of patients within each health board according to the four following categories:

- Physical Disorders (Chronic Physical Illness, Convalescence and Rehabilitation, Physical Disability, Terminal Illness)
- Mental Disorders (Chronic Mental Illness, Mental Infirmity and Dementia, Mental Handicap)
- Social Reasons
- Other

According to this classification over half of patients (55.5%) fall into Physical Disorder category, 27 percent fall into the Mental Disorder category, 14 percent fall in to the Social Reasons category and 3.5 percent are in the Other category. Again there is some variation among the health boards. Just over half of patients (53.0%) within the Eastern Health Board are categorised as having a Physical Disorder while just over 60 percent (60.6%) of patients within the North-Eastern Health Board fall into this category.

Figure C3
Long-Stay Units by Health Board:
Percentage Distribution of Patients Resident at 31 December 1997
by Medico/Social Status



Admissions

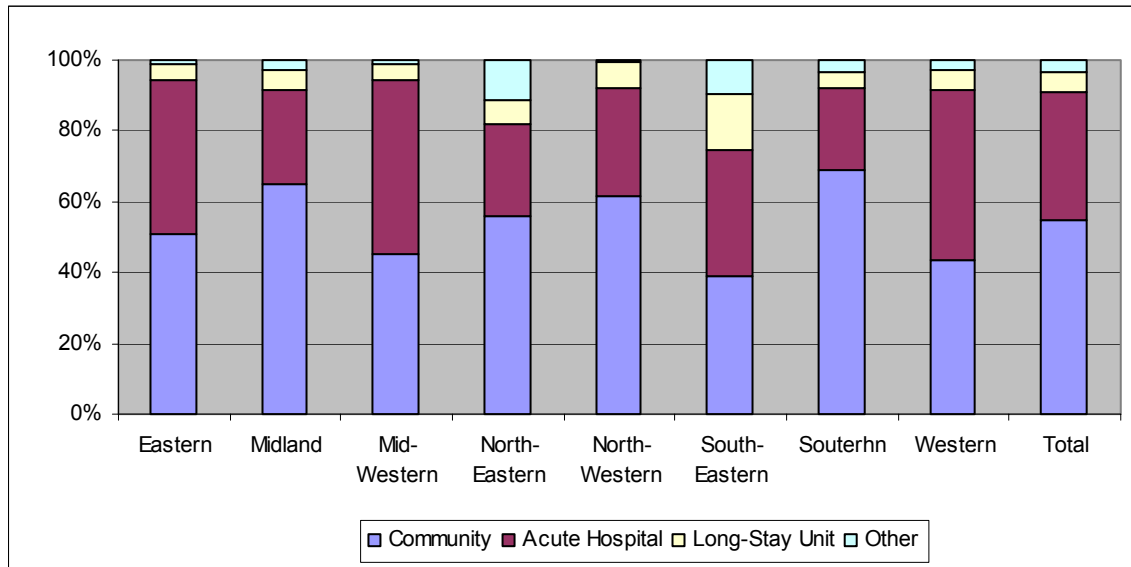
Table C8 and Figure C4 give details of the source of admissions by health board. As stated earlier the majority of patients (54.8%) were admitted from the community. However there is some considerable variation among health boards. For example, 38.8 percent of patients were admitted from the community within the South-Eastern Health Board. Within the Southern Health Board this figure was 68.9 percent. Similarly, the proportion admitted from an acute hospital also varies considerably from 23.2 percent within the Southern Health Board to 49.0 percent within the Mid-Western Health Board.

Table C8

**Long-Stay Units by Health Board:
Percentage Distribution of Patients Admitted During 1997 By Source of Admission**

Health Board	Community	Acute Hospital	Long-Stay Hospital / Home	Other	Total
Eastern	50.7	43.9	4.0	1.4	100
Midland	65.2	26.6	5.4	2.8	100
Mid-Western	45.2	49.0	4.8	0.9	100
North-Eastern	56.1	25.6	6.8	11.5	100
North-Western	61.5	30.4	7.4	0.7	100
South-Eastern	38.8	35.9	15.6	9.6	100
Southern	68.9	23.2	4.6	3.2	100
Western	43.7	47.6	5.7	3.0	100
TOTAL	54.8	36.3	5.7	3.2	100

**Figure C4
Long-Stay Units by Health Board:
Percentage Distribution of Patients Admitted During 1997 By Source of Admission**



Discharges

Table C9 and Figure C5 give details of the destination of patients who were discharged throughout 1997 within each health board. The majority of patients (62.1%) were discharged back into the community. However, there is considerable variation among the health boards. For example, 39.7 percent of patients within the South-Eastern Health Board were discharged back into the community while the figure within the Eastern Health Board is 73.0 percent. Similarly the proportion of patients who were deceased

varies from 17 percent within the North-Eastern Health Board to 42 percent within the South-Eastern Health Board.

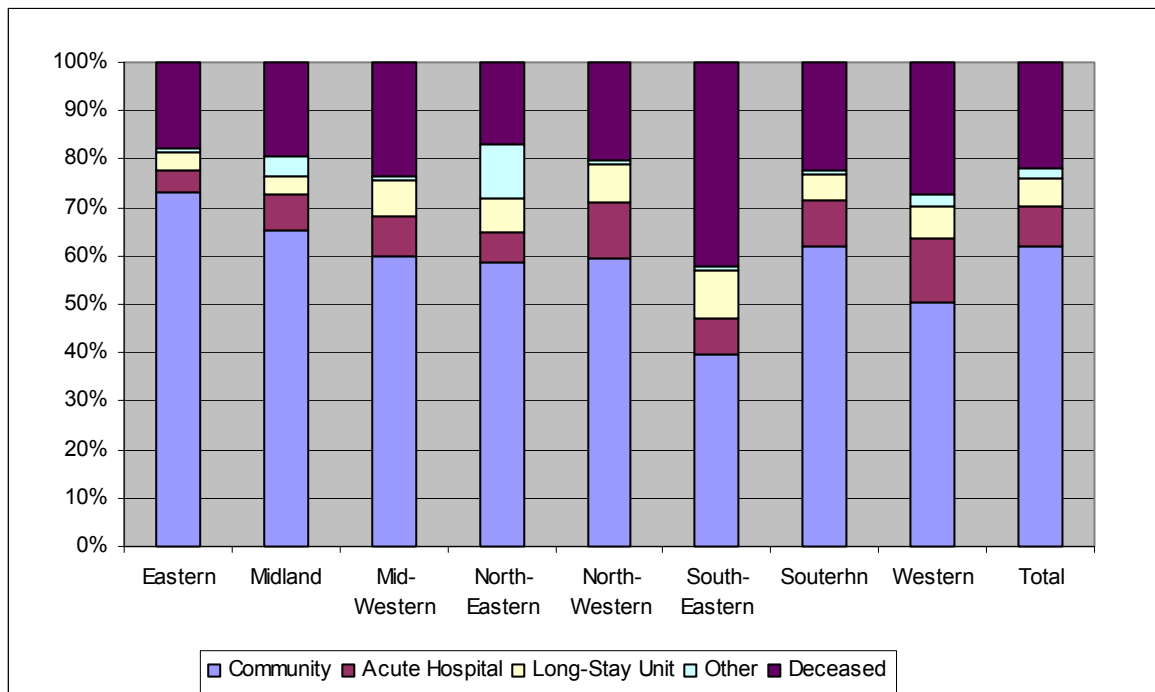
Table C9

**Long-Stay Units by Health Board:
Percentage Distribution of Patients Discharged During 1997
by Destination of Discharge**

Health Board	Community	Acute Hospital	Long-Stay Hospital / Home	Other	Deceased	Total
Eastern	73.0	4.5	3.9	1.0	17.6	100
Midland	65.1	7.7	3.7	4.0	19.5	100
Mid-Western	60.0	8.2	7.5	0.6	23.7	100
North-Eastern	58.6	6.4	7.1	11.0	17.0	100
North-Western	59.7	11.3	8.2	0.8	20.1	100
South-Eastern	39.7	7.5	9.7	1.1	42.0	100
Southern	62.1	9.3	5.3	1.0	22.3	100
Western	50.6	12.9	6.8	2.4	27.3	100
TOTAL	62.1	8.0	5.9	2.2	21.7	100

Figure C5

**Long-Stay Units by Health Board:
Percentage Distribution of Patients Discharged During 1997
by Destination of Discharge**



Length of Stay

Over three-quarters (77.7%) of patients who were discharged in 1997 were in residence for less than three months. Table C10 and Figure C6 give details of the length of stay of discharged patients within each health board.

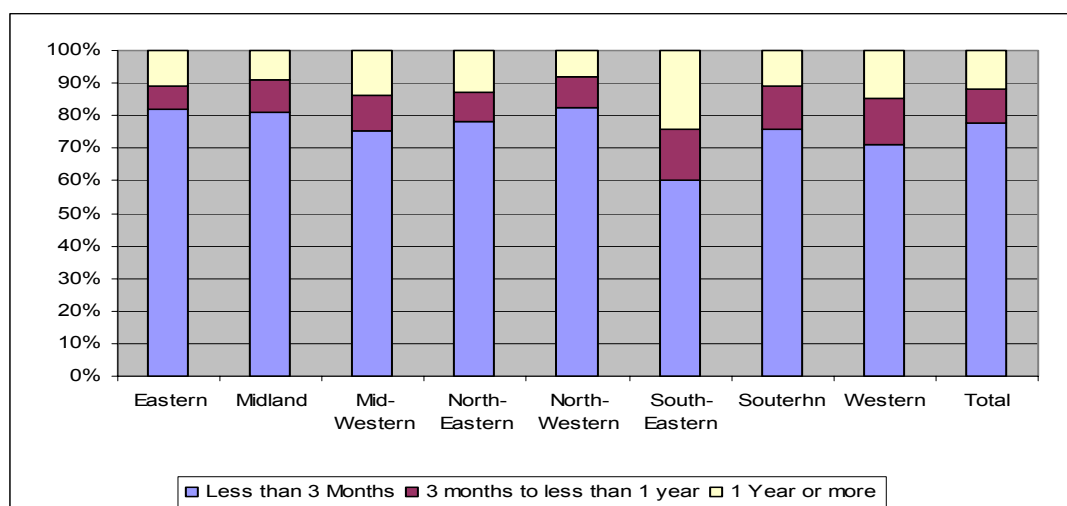
Table C10

**Long-Stay Units by Health Board:
Percentage Distribution of Patients Discharged (including Deceased) During 1997
by Length of Stay**

Health Board	Less than 3 Months	3 to < 6 Months	6 months to < 1 year	1 to < 2 years	2 to < 4 Years	4 to < 6 Years	6 to < 10 Years	10 Years and Over	Total
Eastern	82.1	3.6	3.3	3.2	3.7	1.8	1.5	0.8	100
Midland	81.2	6.2	3.8	2.6	2.9	1.3	1.2	0.8	100
Mid-Western	75.6	6.4	4.4	2.9	3.8	2.7	3.0	1.3	100
North-Eastern	78.5	5.4	3.4	3.4	4.5	2.8	1.2	0.9	100
North-Western	82.5	6.1	3.5	3.0	2.8	0.9	0.7	0.6	100
South-Eastern	60.1	7.9	7.6	7.9	8.0	4.4	2.5	1.6	100
Southern	75.7	9.3	4.2	3.5	3.6	1.9	1.4	0.5	100
Western	71.2	9.5	4.5	4.6	4.7	2.2	1.9	1.3	100
TOTAL	77.7	6.5	4.0	3.6	3.9	2.0	1.6	0.9	100

Figure C6 re-categorises length of stay into less than three months, three months to less than one year and one year and over. It is clear that there is some variation among the health boards with regard to length of stay. For example within the South-Eastern Health Board nearly one quarter (24.1%) of patients had a length of stay of one year compared to 14.7 percent of patients in the Western Health Board which had the next largest proportion of patients in this category.

**Figure C6
Long-Stay Units by Health Board:
Percentage Distribution of Patients Discharged (including Deceased) During 1997
by Length of Stay**



Section D
Summary of Individual Long-Stay Units by Health Board and Unit Category

This section looks at individual long-stay units within each health board and according to category of Long-Stay unit. The tables below give details of number of beds, number of patients, number of admissions and number of discharges within each long-stay unit during 1997. In this way it is possible to get a picture of the variety with regard to size and activity (i.e., admissions and discharges) within long-stay units across the country. "CNU" denotes Community Nursing Unit.

Table D1

Eastern Health Board Area
Summary of Individual Long-Stay Units 1997

Unit Category and Name	Number of Beds at 31/12/1997	Number of Patients at 31/12/1997	Number of Admissions During 1997	Number of Discharges During 1997
Health Board Geriatric Home / Hospital				
BRU CHAOIMHIN, D8	182	175	111	106
CLONSKEAGH HOSPITAL, D6	76	71	61	57
DISTRICT HOSPITAL, BALTINGLASS	95	87	181	176
DISTRICT HOSPITAL, WICKLOW	30	30	75	75
BAGGOT STREET HOSPITAL, D4	84	75	1077	1077
ST CLARE'S, D11	85	84	74	69
ST COLMAN'S, RATHDRUM	142	117	447	453
ST JAMES'S, D8	108	106	175	240
ST MARY'S, PHOENIX PARK	345	318	920	919
ST VINCENT'S, ATHY	224	213	447	436
CHERRY ORCHARD, D10	86	75	49	46
CUAN ROS, D7	46	40	266	261
SIR PATRICK DUNNE'S, D2	50	38	84	46
Total	1553	1429	3967	3961
Health Board Welfare Homes				
ASHGROVE HOUSE, D7	39	39	9	6
CLAREHAVEN, D11	39	39	6	6
DROGHEDA MEMORIAL, CURRAGH	20	17	55	56
ST BROCK'S, D6	39	29	7	8
THE ORCHARD, BRAY	39	39	8	7
CLEVIS WELFARE HOME, D18	42	32	12	16
Total	218	195	97	99

Table D1 Continued

Unit Category and Name	Number of Beds at 31/12/1997	Number of Patients at 31/12/1997	Number of Admissions During 1997	Number of Discharges During 1997
Voluntary Geriatric Homes / Hospitals				
ARDEEN CHESHIRE, ARKLOW	33	30	33	31
BEAUMONT, D9	81	80	24	22
THE BRABAZON TRUST, D4	12	9	15	18
GLENIDARE, D4	30	29	13	12
HARCOURT HOME, D2	34	32	3	3
HOLY FAMILY RESIDENCE, D14	83	83	10	10
JEWISH HOME OF IRELAND, D6	41	41	15	12
KILMACUD HOUSE, STILLORGAN	38	27	3	8
MARYVILLE, D4	46	46	4	4
MOLYNEUX HOME, D6	25	22	6	5
NAZARETH HOUSE, D3	102	96	16	20
OUR LADY'S HOSPICE, D6	108	105	83	79
QUEEN OF PEACE CENTRE, D6	47	45	7	7
SACRED HEART RESIDENCE, D5	91	91	12	21
ST JOHN'S HOUSE OF REST, D4	44	42	11	9
ST MARY'S COMMUNITY CENTRE, D6	12	12	2	2
BEECH LAWN HOUSE, D9	16	16	2	1
ST MARY'S HOME, PEMBROKE PARK	38	31	7	5
SIMPSON'S HOSPITAL, D16	44	37	9	12
GASCOIGNE HOME, D8	20	18	25	13
THE ROYAL HOSPITAL, D4	232	210	243	261
RICKARD HOUSE, BLACKROCK	23	20	30	29
ST MARY'S CENTRE, D4	70	69	7	4
MARIAN HOUSE, D12	27	25	32	32
GARDA RETIREMENT HOME, D5	39	39	16	12
ST GABRIEL'S, D5	50	49	43	43
NEW LODGE, D4	29	28	21	20
SHALOM, KILCOCK	27	24	14	13
PEAMOUNT HOSPITAL, NEWCASTLE	74	69	85	38
CARA CHESHIRE, PHOENIX PARK	34	30	1	2
RICHMOND CHESHIRE, MONKSTOWN	20	19	96	96
ST COLUMBAN'S, MAGHERAMORE	21	19	4	4
HOLY ROSARY, D6	28	23	23	5
ST PATRICK'S, D13	39	36	23	17
MCAULEY HOUSE, D9	20	19	19	3
LEOPARDSTOWN PARK HOSPITAL, D18	254	230	648	624
Total	1932	1801	1605	1497

Table D1 Continued

Unit Category and Name	Number of Beds at 31/12/1997	Number of Patients at 31/12/1997	Number of Admissions During 1997	Number of Discharges During 1997
Private Nursing Homes				
ACLARE HOUSE, DUN LAOGHAIRE	25	25	12	12
AILESBURY, D4	45	45	20	20
ALEXANDRA GUILD HOUSE, D6	27	27	9	12
ALTADORE, GLENAGEARY	35	35	20	19
ANNABEG HOUSE, BALLYBRACK	14	11	6	7
ANNAMOE, BRAY	25	25	8	8
ASHFORD HOUSE, DUN LAOGHAIRE	28	23	15	16
ATLANTA, BRAY	43	39	12	3
BEDFORD HOUSE, BALBRIGGAN	35	32	16	17
BRYMORE HOUSE, HOWTH	40	36	10	16
CAIRN HILL, D18	25	25	11	14
CARYSFORT, GLENAGEARY	40	40	11	11
CASTLE CLARE, GREYSTONES	76	56	41	29
CHARLEVILLE, BLACKROCK	13	13	21	21
CLINO CLINIC, SKERRIES	30	24	491	491
CLANALON HOUSE, BRAY	19	18	6	6
CLONTARF, D3	45	44	16	14
CHURCH VIEW, D7	54	46	24	42
DALKEY LODGE, DALKEY	31	28	28	32
FAIRWAYS, D14	13	13	3	4
FINGAL HOUSE, SWORDS	20	19	10	11
FLORENCE GARDEN, BRAY	44	42	21	17
GLENASHLING, CELBRIDGE	36	36	25	19
GLENAULIN, D20	66	66	18	18
GLENBERVIE, BRAY	32	26	14	15
GLENCARRAIG, D24	21	21	4	3
GLENGARA PARK, DUN LAOGHAIRE	45	42	49	31
GLENHAZEL, BRAY	34	24	43	29
HARVEY, D6W	23	21	17	15
HAZEL HALL, CLANE	46	46	124	115
KENILWORTH, D6	23	23	10	10
KINVARA HOUSE, BRAY	40	32	18	18
KYLEMORE, BRAY	25	25	11	15
LA VERNA, D3	14	11	4	7
LEESON PARK HOUSE, D6	54	48	27	26
LISHEEN, RATHCOOLE	27	25	15	12
LIS-NA-BIN, BRAY	19	18	2	2
LOURDESVILLE, KILDARE	34	34	38	30
LUCAN LODGE, LUCAN	45	45	20	16
MARYFIELD, D20	51	46	14	14
NEWTOWNPARK HOUSE, BLACKROCK	62	60	18	17
NIRVANA, GREYSTONES	12	8	6	5
NORTHBROOK, D6	21	21	16	17

Table D1 continued

Unit Category and Name	Number of Beds at 31/12/1997	Number of Patients at 31/12/1997	Number of Admissions During 1997	Number of Discharges During 1997
ORWELL HOUSE, D6	64	63	266	222
OUR LADY'S MANOR, DALKEY	172	115	1081	1075
RIVERSDALE HOUSE, D20	25	25	13	13
ROSTREVOR, D6	24	24	3	3
RYEVALE, LEIXLIP	46	46	21	21
ST ANTHONY'S, D7	11	11	5	5
ST ANTHONY'S, DUN LAOGHAIRE	25	21	7	9
ST MONICA'S, D1	19	19	0	3
SALLY PARK, D24	35	35	39	33
SHANNAGH BAY, BRAY	45	41	23	29
SHREWSBURY HOUSE, D3	33	33	10	10
TARA, BRAY	38	38	17	17
THE CROFT, D8	33	32	32	4
GROVE, KILLINEY	46	40	108	106
RATHFARNHAM, D16	35	35	10	18
GRIFFEEN VALLEY, LUCAN	21	21	4	4
ELMHURST, D9	40	32	526	517
TALBOT LODGE, KINSEALY	49	42	42	56
ST JOSEPH'S CENTRE, SHANKILL	58	58	21	20
CEDAR HOUSE, D14	16	11	35	35
OGHILL NURSING HOME, MONASTERVIN	21	10	20	12
BELMONT NURSING HOME, STILLORGAN	29	14	37	23
Totals	2342	2108	3624	3491
Eastern Health Board Totals	6045	5533	9293	9048

Table D2
Midland Health Board Area
Summary of Individual Long-Stay Units 1997

Unit Category and Name	Number of Beds at 31/12/1997	Number of Patients at 31/12/1997	Number of Admissions During 1997	Number of Discharges During 1997
Health Board Geriatric Home / Hospital				
GENERAL HOSPITAL, TULLAMORE	47	47	349	432
RIADA HOUSE, TULLAMORE	42	40	220	220
ST BRIGID'S, PORTLAOISE	58	58	9	8
LONGFORD HOSPITALS, LONGFORD	162	134	360	371
ST MARY'S, MULLINGAR	137	114	253	257
ST VINCENT'S, MOUNTMELICK	162	149	233	234
CNU, ABBEYLEIX	50	49	214	209
Total	658	591	1638	1731
Health Board Welfare Homes				
ELY HOUSE, BIRR	40	36	220	220
LOUGHLOE HOUSE, ATHLONE	41	41	7	7
CNU, OFFALIA HOUSE	41	40	21	25
Total	122	117	248	252
Health Board District / Community Hospital				
CNU, BIRR	30	29	265	264
DISTRICT HOSPITAL, ATHLONE	81	80	130	133
Total	111	109	395	397
Voluntary Geriatric Homes / Hospitals				
OUR LADY'S MANOR, EDGEWORTHSTOWN	70	66	113	97
ST CAMILLUS, KILLUCAN	57	57	16	16
MOUNT VISTA, ATHLONE	20	13	16	14
Total	147	136	145	127

Table D2 Continued

Unit Category and Name	Number of Beds at 31/12/1997	Number of Patients at 31/12/1997	Number of Admissions During 1997	Number of Discharges During 1997
Private Nursing Homes				
BALLARD LODGE, PORTLAOISE	14	14	22	22
BETHANY HOUSE, TYRELLSPASS	28	26	7	7
BLACKHILL, ABBEYLEIX	20	15	14	12
CASTLECORE, BALLYMAHON	33	31	19	18
ELMGROVE HOUSE, BIRR	33	21	6	12
FAIRVIEW, ABBEYLEIX	11	11	5	5
MARIAN, PORTARLINGTON	10	10	17	17
NEWTOWNFORBES	41	41	58	47
OUR LADY OF CONSOLATION, TULLAMORE	25	25	8	7
ROSETTA, PORTLAOISE	24	22	19	15
ST IGNATIUS, TULLAMORE	34	33	38	35
STELLA MARIS, ATHLONE	18	17	0	6
UPTON HOUSE, CLARA	23	23	8	7
ST CLAIRE'S MEDICAL CENTRE, BALLINDERRY	42	41	38	27
LAUREL LODGE, GLEBE	30	29	24	25
Total	386	359	283	262
Midland Health Board Total	1424	1312	2709	2769

Table D3
Mid-Western Health Board Area
Summary of Individual Long-Stay Units 1997

Unit Category and Name	Number of Beds at 31/12/1997	Number of Patients at 31/12/1997	Number of Admissions During 1997	Number of Discharges During 1997
Health Board Geriatric Home / Hospital				
HOSPITAL OF THE ASSUMPTION, THURLES	130	109	275	288
ST CAMILLUS, LIMERICK	272	237	632	649
ST ITA'S, NEWCASTLE WEST	160	144	338	324
ST JOSEPH'S, ENNIS	262	215	495	507
ST JUDE'S, KILMALLOCK	8	8	1	1
Total	832	713	1741	1769
Health Board Welfare Homes				
CNU, ROSCREA	37	36	48	50
CNU, KILRUSH	39	35	56	60
CNU, NENAGH	32	28	68	68
Total	108	99	172	178
Health Board District / Community Hospital				
COMMUNITY HOSPITAL, ENNISTYMON	32	22	95	98
COMMUNITY HOSPITAL, RAHEEN	36	27	45	46
Total	68	49	140	144
Voluntary Geriatric Homes / Hospitals				
CARRIGORAN HOUSE, NEWMARKET-ON-FERGUS	152	148	104	103
KILRUSH DISTRICT HOSPITAL, KILRUSH	54	54	31	26
MILFORD HOUSE, CASTLETROY	51	49	154	150
MOUNT CARMEL, ROSCREA	27	25	10	10
CAHERCALLA COMMUNITY HOSPITAL, CAHERCALLA	50	50	16	17
STELLA MARIS, LISDOONVARNA	44	43	12	10
Total	378	369	327	316

Table D3 Continued

Unit Category and Name	Number of Beds at 31/12/1997	Number of Patients at 31/12/1997	Number of Admissions During 1997	Number of Discharges During 1997
Private Nursing Homes				
ARDEEN, THURLES	39	39	22	17
ARD NA COILLE, FOYNES	19	18	9	7
ARD NA RI, BRUFF	15	14	7	8
ASHLAWN, NENAGH	27	27	19	24
BEECHWOOD HOUSE, NEWCASTLE, WEST	38	26	24	22
BELMONT, CASTLECONNELL	27	24	5	5
CAHERMOYLE HOUSE, ARDAGH	28	23	20	19
CORBALLY HOUSE, CORBALLY	32	32	103	97
GERARD HOUSE, LIMERICK	32	32	12	12
GLEBE HOUSE, FEDAMORE	41	36	15	18
GLENVIEW HOUSE, NEWPORT	14	11	4	4
GOOD COUNSEL, LIMERICK	27	27	6	6
GREENPARK, LIMERICK	9	9	3	3
PATTERSON'S, ROSCREA	12	11	3	3
RIVERDALE HOUSE, ARDNACRUSHA	17	17	2	2
ROSEVILLE, BALLYSIMON	40	37	74	59
ST ANNE'S, DROMCOLLOGHER	18	18	6	8
ST ANTHONY'S, PALLASGREEN	25	23	17	12
ST BARNABAS'S, CLONCLARA	15	14	15	12
MOUNT ST BENEDICT, THURLES	12	12	4	7
ST GOBNAIT'S, BALLYAGRAN	20	20	4	4
ST JUDE'S, BORRISOLEIGH	18	18	18	12
ST KIERAN'S, ROSCREA	26	26	10	10
ST PAUL'S, LIMERICK	53	51	22	24
ST THERESA'S, THURLES	37	30	28	35
SANCTA MARIA, CRATLOE	24	23	12	7
SUMMERVILLE, ATHLACCA	20	19	12	5
TALL TREES, ASKEATON	26	25	19	10
THORPES, CLARINA	26	24	13	13
VILLA MARIA, PARTEEN	33	33	24	24
BUSHY PARK, BORRISOKANE	40	39	23	23
Total	810	758	555	512
Mid-Western Health Board Total	2196	1988	2935	2919

Table D4
North-Eastern Health Board Area
Summary of Individual Long-Stay Units 1997

Unit Category and Name	Number of Beds at 31/12/1997	Number of Patients at 31/12/1997	Number of Admissions During 1997	Number of Discharges During 1997
Health Board Geriatric Home / Hospital				
COTTAGE HOSPITAL, DROGHEDA	48	47	225	226
SULLIVAN MEMORIAL HOME, CAVAN	39	36	64	58
COUNTY INFIRMARY, NAVAN	16	14	362	362
ORIEL HOUSE, ROOSKEY	32	31	6	7
ST FELIM'S, CAVAN	120	111	315	322
ST JOSEPH'S, ARDEE	45	43	56	56
ST JOSEPH'S, TRIM	210	179	214	217
ST MARY'S, CASTLEBLAYNEY	144	137	416	326
ST MARY'S, DROGHEDA	39	38	86	86
ST OLIVER PLUNKET, DUNDALK	152	148	313	316
LISDARAN UNIT, CAVAN	69	64	215	208
Total	914	848	2272	2184
Health Board Welfare Home				
BOYNE VIEW HOUSE, DROGHEDA	38	37	116	108
Total	38	37	116	108
Voluntary Geriatric Home / Hospital				
SACRED HEART HOME, CLONES	50	50	52	52
ST JOSEPH'S, BALLYBAY	36	36	10	10
AUGUSTINIAN HOME, RATOATH	56	54	7	6
MOUNT OLIVER CONVENT INFIRMARY, DUNDALK	30	28	3	3
ARAS MHUIRE, BEECHGROVE	30	20	59	55
ST LOUIS, MONAGHAN	18	18	18	12
Total	220	206	149	138

Table D4 Continued

Unit Category and Name	Number of Beds at 31/12/1997	Number of Patients at 31/12/1997	Number of Admissions During 1997	Number of Discharges During 1997
Private Nursing Homes				
NAVAN, ATHLUMNEY	24	24	44	38
BOYNE VALLEY, DOWTH	14	14	2	2
CREEVELEA HOUSE, LAYTOWN	46	46	23	23
FAIRLAWNS, BAILIEBORO	35	35	31	25
HARBOUR VIEW, CARLINGFORD	11	11	9	9
HILLVIEW, TARA	26	21	34	33
OMEGA, BELTURBET	18	18	8	9
ST ANTHONY'S, TRIM	14	14	4	7
ST CLARE'S, STAMULLEN	69	65	24	27
ST DYMUNA'S, KILDALKEY	12	11	5	5
ST URSULA'S, BETTYSTOWN	12	12	7	7
SANCTA MARIA, KINNEGAD	12	12	7	7
WINDFIELD, DUNBOYNE	18	16	18	15
ST ELIZABETH'S, ATHBOY	10	9	7	8
WINDWOOD LODGE, DUNDALK	13	11	32	31
Totals	334	319	255	246
North-Eastern Health Board Totals	1506	1410	2792	2676

Table D5
North-Western Health Board
Summary of Individual Long-Stay Units 1997

Unit Category and Name	Number of Beds at 31/12/1997	Number of Patients at 31/12/1997	Number of Admissions During 1997	Number of Discharges During 1997
Health Board Geriatric Home / Hospital				
ARUS BREFFNI, MANORHAMILTON	40	36	61	39
CNU, BALLYMOTE	27	27	2	2
ST JOHN'S, SLIGO	236	224	624	621
ST JOSEPH'S, STRANORLAR	106	103	252	255
Totals	409	390	939	917
Health Board Welfare Home				
ARUS CAROLAN, MOHILL	39	39	14	14
ROCK HOME, BALLYSHANNON	35	35	14	13
Totals	74	74	28	27
Health Board District / Community Hospital				
CNU, FALCARRAGH	35	30	141	144
CNU, BUNCRANA	45	38	55	52
CNU, RAMELTON	39	39	64	63
COMMUNITY HOSPITAL, CARNDONAGH	39	35	291	287
COMMUNITY HOSPITAL, DONEGAL	28	25	400	406
DISTRICT HOSPITAL, DUNGLOE	84	39	315	332
COMMUNITY HOSPITAL, LIFFORD	38	38	178	177
OUR LADY'S, MANORHAMILTON	37	35	400	402
ST PATRICK'S, CARRICK-ON-SHANNON	118	114	337	334
SHEIL HOSPITAL, BALLYSHANNON	51	49	289	281
Totals	514	442	2470	2478
Voluntary Geriatric Home / Hospital				
NAZARETH HOUSE, SLIGO	147	144	51	48
NAZARETH HOUSE, FAHAN	48	48	20	20
Totals	195	192	71	68

Table D5 Continued

Unit Category and Name	Number of Beds at 31/12/1997	Number of Patients at 31/12/1997	Number of Admissions During 1997	Number of Discharges During 1997
Private Nursing Home				
ALVERNA, LETTERKENNY	32	30	18	13
DRUMBEG, INVER	42	39	33	29
LAGGAN VALLEY, LIFFORD	28	26	14	4
LAKEVIEW, MOHILL	24	24	20	21
SANCTA MARIA, ENNISCRONE	29	29	17	17
LAKE HOUSE, PORT-NA-BLAGH	57	57	18	18
HARBOUR LIGHTS, BRUCKLESS	36	36	10	13
BAILEY'S, TUBBERCURRY	41	40	0	0
ST PHELM'S, DROMAHAIRE	35	35	42	26
Totals	324	316	172	141
North-Western Health Board Totals	1516	1414	3680	3631

Table D6
South-Eastern Health Board Area
Summary of Individual Long-Stay Units 1997

Unit Category and Name	Number of Beds at 31/12/1997	Number of Patients at 31/12/1997	Number of Admissions During 1997	Number of Discharges During 1997
Health Board Geriatric Home / Hospital				
NEW HAUGHTON, NEW ROSS	66	66	40	38
SACRED HEART, CARLOW	90	82	150	150
ST COLUMBA'S, THOMASTOWN	132	126	109	110
ST JOSEPH'S, DUNGARVAN	107	103	123	133
ST JOHN'S, ENNISCORTHY	169	169	193	189
ST PATRICK'S, CASHEL	130	120	36	41
ST PATRICK'S, WATERFORD	97	96	98	104
Totals	791	762	749	765
Health Board Welfare Home				
BETHANY HOUSE, CARLOW	38	33	16	16
CLUAIN ARANN, TIPPERARY	40	38	7	10
DUNABBEY HOUSE, DUNGARVAN	40	40	20	22
O'GORMAN HOME, BALLYRAGGET	11	11	2	4
PRAGUE HOUSE, FRESHFORD	24	24	12	12
ST JOSEPH'S, KILMOGANNY	19	15	10	13
GAHAN HOUSE, GRAIGUENAMANAGH	16	15	5	6
Totals	188	176	72	83
Voluntary Geriatric Home / Hospital				
COMMUNITY HOSPITAL, NEW ROSS	34	34	93	74
HOLY GHOST HOSPITAL, WATERFORD	59	58	10	11
ST JOSEPH'S HOME, MANOR HILL	52	44	16	18
MARIAN COURT, CLONMEL	40	35	6	5
MOUNT CARMEL, CALLAN	22	22	3	5
ST BRIGID'S, CARLOW	24	24	51	45
ST FIACC'S HOUSE, CARLOW	20	18	10	8
AUT EVEN HOSPITAL, KILKENNY	25	24	114	114
ELY HOSPITAL, FERRYBANK	2	2	1	1
ST LAZERIAN'S HOUSE, BAGENALSTOWN	20	15	2	11
MARTIN RESIDENTIAL HOME, PORTLAW	19	12	15	16
ST ANNE'S, PORTLAW	33	33	8	5
Totals	350	321	329	313

Table D6 Continued

Unit Category and Name	Number of Beds at 31/12/1997	Number of Patients at 31/12/1997	Number of Admissions During 1997	Number of Discharges During 1997
Private Nursing Home				
ARD NA FARRAIGE, TRAMORE	21	18	9	10
AVONDALE, CALLAN	31	31	16	16
BAILEY HOUSE, THURLES	17	17	6	6
COTTAGE, CLONMEL	20	20	25	18
DR CUDDIGAN'S ENNISCORTHY	20	18	14	11
LAWSON HOUSE, ENNISCORTHY	33	32	17	19
PADRE PIO REST HOME, CAPPOQUIN	24	20	17	18
ROS AOIBHINN, BUNCLODY	20	20	6	6
ROCKSHIRE CARE CENTRE, FERRYBANK	17	17	15	12
SACRE COEUR, TIPPERARY	26	26	15	16
ST ANNE'S, CASHEL	19	18	10	7
ST ANNE'S, KILMORE	18	14	11	11
DEERPARK, LATTIN	28	28	8	9
ST CATHERINE'S, FRESHFORD	22	19	11	13
ST JOSEPH'S, TIPPERARY	24	23	13	12
ST JOSEPH'S, THOMASTOWN	38	37	28	17
ST MARTHA'S, CAHIR	14	14	4	3
TEN ACRE, KILRANE	14	13	8	7
WOODLANDS, DUNDRUM	25	25	7	5
MAYPARK HOUSE, WATERFORD	37	31	134	128
BEECHWOOD, LEIGHLINBRIDGE	26	25	9	9
WOODSIDE HOUSE, FETHARD	20	20	5	5
PADRE PIO, HOLYCROSS	40	40	29	27
ST LAWRENCE'S, FETHARD	25	22	7	10
BRAMLEIGH LODGE NURSING HOME, CAHIR	10	10	6	7
Totals	589	558	430	402
South-Eastern Health Board Totals	1918	1817	1580	1563

Table D7
Southern Health Board Area
Summary of Individual Long-Stay Units 1997

Unit Category and Name	Number of Beds at 31/12/1997	Number of Patients at 31/12/1997	Number of Admissions During 1997	Number of Discharges During 1997
Health Board Geriatric Home / Hospital				
GENERAL HOSPITAL, BANTRY	24	19	88	92
GENERAL HOSPITAL, TRALEE	60	52	115	117
MOUNT CARMEL, CLONAKILTY	147	146	73	74
ST ANTHONY'S, DUNMANWAY	23	23	65	65
ST COLUMBANUS', KILLARNEY	204	193	137	138
ST FINBARR'S, CORK	167	150	65	61
DISTRICT HOSPITAL, CLONAKILTY	48	47	171	165
Totals	673	630	714	712
Health Board Welfare Homes				
WELFARE HOME, LISTOWEL	360	35	6	7
ST JOSEPH'S, KILLORGLIN	40	40	16	16
WELFARE HOME, FERMOY	40	22	4	4
COIS ABHANN, YOUGHAL	33	28	85	85
CARE OF THE AGED, DINGLE	19	16	5	7
Totals	492	141	116	119
Health Board Community / District Hospitals				
COMMUNITY HOSPITAL, BANDON	23	22	68	68
DISTRICT HOSPITAL, KANTURK	52	50	156	156
DISTRICT HOSPITAL, KENMARE	26	23	344	344
DISTRICT HOSPITAL, KILLARNEY	39	26	593	593
COMMUNITY HOSPITAL, KINSALE	38	32	238	238
COMMUNITY HOSPITAL, LISTOWEL	63	53	298	297
COMMUNITY HOSPITAL, MACROOM	38	38	112	112
COMMUNITY HOSPITAL, YOUGHAL	35	34	119	120
GENERAL HOSPITAL, COBH	42	42	42	47
OUR LADY OF LOURDES, MIDLETON	90	87	121	121
ST ANNE'S, SKIBBEREEN	40	37	296	298
ST ANNE'S, CAHERCIVEEN	45	36	249	249
ST ELIZABETH'S, DINGLE	43	43	183	183
ST GABRIEL'S, SCHULL	21	21	47	47
ST JOSEPH'S, CASTLETOWNBERE	33	33	121	121
ST JOSEPH'S, MILLSTREET	26	24	72	72
ST PATRICK'S, FERMOY	80	79	403	403
Totals	734	680	3462	3469

Table D7 Continued

Unit Category and Name	Number of Beds at 31/12/1997	Number of Patients at 31/12/1997	Number of Admissions During 1997	Number of Discharges During 1997
Voluntary Geriatric Homes / Hospital				
NAZARETH HOUSE, MALLOW	156	137	158	160
OUR LADY OF FATIMA, TRALEE	68	67	39	21
SACRED HEART, YOUGHAL	30	27	35	35
ST JOSEPH'S, MOUNT DESERT	40	36	96	100
ST LUKE'S, MAHON	91	91	31	36
ST PATRICK'S, CORK	51	46	415	416
COMMUNITY HOSPITAL, VALENTIA	16	16	21	22
Totals	452	420	795	790
Private Nursing Home				
ARAS AOIBHINN, MACROOM	30	25	7	10
ARDSLEY, FARRAN	18	18	11	5
BANTRY VIEW, BANTRY	24	22	5	8
BEAUMONT RESIDENTIAL CARE, CORK	42	40	8	8
BRIDHAVEN, MALLOW	24	24	10	10
CASTLEMAHON, BLACKROCK	23	18	8	6
CATHERINE MCCAULEY HOME, CHARLEVILLE	25	25	30	29
CHESSWOOD, TRALEE	19	19	14	14
CRAMERS COURT, BELGOOLY	35	28	12	12
CUIL AN SPAILPIN, BALLINSKELLIGS	6	3	3	3
DARRAGLYNN, DOUGLAS	19	18	23	15
DROMMORE, LISTOWEL	22	19	19	14
DUN MHUIRE, BUTTEVANT	18	18	10	9
FAIRY HILL, MALLOW	19	19	17	20
GLENDONAGH, DONGOURNEY	21	16	16	13
GRAIGUE, ARDFERT	11	10	28	23
GRANGE CON, CARRIGROHANE	15	14	6	7
HEATHER LEE, KILLARNEY	10	10	5	3
KENNEDY, LISTOWEL	33	33	5	16
MADONNA HOUSE, BALLINCOLLIG	17	17	7	7
MARYBOROUGH, DOUGLAS	28	25	27	38
NORWOOD GRANGE, WATERFALL	23	23	5	4
OAKLANDS, LISTOWEL	28	27	11	12
OCEAN VIEW, TRALEE	26	26	9	8
OUR LADY OF LOURDES, KILLARNEY	27	26	9	9
PADRE PIO, ROCHESTOWN	9	9	6	6
POWDERMILL, BALLINCOLLIG	30	27	12	16
RESTHAVEN, NEWMARKET	9	9	11	11
RIVERSIDE, ABBEYDORNEY	15	14	12	11
ROSENALEE, BALLINCOLLIG	29	29	19	19
ST ALBERT'S, SUNDAY'S WELL	43	38	38	17
ST JOSEPH'S, TRALEE	15	14	6	6

Table D7 Continued

Unit Category and Name	Number of Beds at 31/12/1997	Number of Patients at 31/12/1997	Number of Admissions During 1997	Number of Discharges During 1997
ST JOSEPH'S, KENMARE	34	15	13	8
ST PAUL'S, CLONAKILTY	30	30	2	2
SHANAKIEL HOSPITAL, CORK	30	29	10	10
STRAWHALL, FERMOY	21	20	15	16
TIR-NA-NOG, KENMARE	15	15	12	14
UPTON HOUSE, INNISHANNON	31	27	23	24
WHITE FRIARS, GLANMIRE	28	23	45	45
CORPUS CHRISTI, MITCHELSTOWN	21	20	9	11
WOODVIEW, LIXNAW	20	20	6	4
PADRE PIO, MALLOW	30	30	33	31
CAHEREEN NURSING HOME, MACROOM	27	18	30	12
HYDE GARDEN HEALTH CARE, CORK	62	54	83	63
OLD SCHOOL NURSING HOME, SKIBBEREEN	18	8	8	0
Totals	1080	972	698	629
Southern Health Board Totals	3431	2843	5785	5719

Table D8
Western Health Board Area
Summary of Individual Long-Stay Units 1997

Unit Category and Name	Number of Beds at 31/12/1997	Number of Patients at 31/12/1997	Number of Admissions During 1997	Number of Discharges During 1997
Health Board Geriatric Home / Hospital				
SACRED HEART, CASTLEBAR	289	226	529	533
SACRED HEART, ROSCOMMON	212	205	383	376
ST BRENDAN'S, LOUGHREA	248	233	111	109
ST DAVID'S, KNOCKNACARRA	15	15	12	12
Totals	764	679	1035	1030
Health Board Welfare Homes				
ARUS MHATHAIR POL, CASTLEREA	46	46	24	24
ARUS MHUIRE, TUAM	26	26	5	5
ARUS MAC DARA, CARRAROE	40	39	13	14
ARUS DEIRBHILE, BELMULLET	80	78	28	28
DALTON HOME, CLAREMORRIS	84	84	214	216
MCBRIDE, WESTPORT	41	35	12	16
PLUNKETT HOME, BOYLE	60	59	25	25
SACRED HEART, ROSCOMMON	212	205	383	376
ST ANNE'S, CLIFDEN	38	37	14	15
ST AUGUSTINE'S, BALLINA	80	80	38	36
ST FRANCIS'S, NEWCASTLE	40	40	7	7
DISTRICT HOSPITAL, BELMULLET	40	39	14	14
Totals	787	768	777	776
Health Board District / Community Hospital				
DISTRICT HOSPITAL, BALLINA	61	61	838	777
DISTRICT HOSPITAL, SWINFORD	40	37	528	529
DISTRICT HOSPITAL, CLIFDEN	30	21	223	230
Totals	131	119	1589	1536
Voluntary Geriatric Homes / Hospitals				
CASTLEMACGARRETT, CLAREMORRIS	58	56	29	23
LAKEVIEW, CASTLEREA	21	20	8	8
CUAN CHAITRIONA, CASTLEBAR	26	23	14	8
	105	99	51	39

Table D8 Continued

Unit Category and Name	Number of Beds at 31/12/1997	Number of Patients at 31/12/1997	Number of Admissions During 1997	Number of Discharges During 1997
Private Nursing Homes				
ARUS BRIDE, GLENAMADDY	28	28	28	13
BELLACAGHER LODGE, B'TUBBER	8	8	3	3
CAISEAL GEAL, CASTLEGAR	23	17	21	27
CAREWELL, BALLYHAUNIS	29	26	15	13
CORRANDULLA	32	30	6	6
CREAGH, BALLINASLOE	14	12	8	9
DRUMDERRIG HOUSE, BOYLE	19	18	16	15
ELMDALE, CRAUGHWELL	18	17	14	9
FEARNA, CASTLEREA	16	12	2	5
GLENLARA, GLENAMADDY	15	15	1	1
GLENPARKE, CASTLEBAR	24	24	32	29
GREENPARK, TUAM	29	29	13	11
HIBERNIAN, PORTUMNA	16	14	10	12
THE HILLCREST, CORRANDULLA	19	19	5	5
LAKELAND, LOUGHREA	35	33	47	44
LOUGH CORRIB, HEADFORD	24	21	11	11
MARYFIELD, ATHENRY	22	22	6	6
QUEEN OF PEACE, CLAREMORRIS	37	36	22	22
ROSEMOUNT, GORT	40	22	17	11
RUSHMORE, KNOCKNACARRA	22	21	6	4
SACRED HEART, SPIDDAL	25	21	28	32
ST ANNE'S, CHARLESTOWN	44	44	12	9
ST ATTRACTA'S, CHARLESTOWN	49	48	48	44
ST COLUMBA'S, KILCOLGAN	32	29	18	13
ST THERESE, SALTHILL	23	20	18	20
VILLA MARIA DEL MAR, BARNABROOK	20	20	20	20
GARBALLY VIEW, BALLINASLOE	32	32	30	30
HILLSIDE, AUGHRIM	25	25	12	11
ST JOSEPH'S, TUAM	23	22	2	4
ST ANNE'S, WOODFORD	20	20	2	2
MOY RIDGE HOUSE, BALLINA	18	16	7	8
OLD CONVENT, ELPHIN	35	33	22	13
OAKWOOD, BALLAGHADERREEN	36	36	14	16
MANOR COURT, CASTLEREA	31	27	7	13
CLEGGAN BEACH, CLEGGAN	16	15	5	6
5 ARCHES, GALWAY	17	17	17	13
KILTORMER, BALLINASLOE	39	38	5	5
LABANE, ARDRAHAN	27	27	23	21
MYSTICAL ROSE, CLAREGALWAY	25	25	4	5
NIGHTINGALE, BALLINASLOE	22	22	38	28
MOUNTBELLEW NURSING HOME,	22	22	31	9
BALLYGAR NURSING HOME,	16	16	7	6
Totals	1067	999	653	584
Western Health Board Totals	2854	2664	4105	3964

