

# Acute Hospital Services

Annual Report  
'99



MID-WESTERN  
HEALTH BOARD

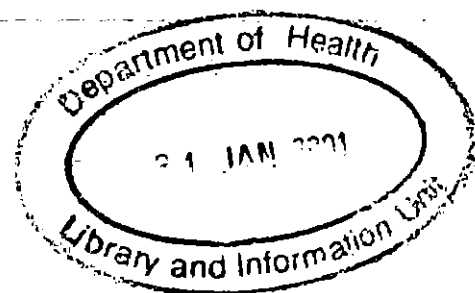
# Acute Hospital Services

Annual Report  
'99



**MID-WESTERN**  
HEALTH BOARD

# Acute Hospital Services



	Page
Introduction	1
Overview	
Demographics	2
Activity	3
Resources	8
Service Developments	
Mid-Western Regional Hospitals	9
General Hospital, Ennis	12
General Hospital, Nenagh	13
Appendices	
Statistical Information	
Appendix 1 Acute Hospitals	14
Appendix 2 Mid-Western Regional Hospital	22
Appendix 3 Regional Maternity Hospital	27
Appendix 4 Regional Orthopaedic Hospital	31
Appendix 5 General Hospital, Ennis	34
Appendix 6 General Hospital, Nenagh	38
Appendix 7 Orthodontic Services	42

---

## Introduction

---

A report by Comhairle na n-Ospideal published in 1991 provides the basis for acute in-patient care in the region. The report outlined the role and function of the Acute Hospitals in the region and the range and type of specialities. In the intervening period, a number of local service development plans have been published within the broad policy framework of the Comhairle report. Major strategic plans at national level which impact on local service developments include the Cancer and Cardiovascular Strategies.

A review of Acute Services in the region is currently underway and a strategy for the future provision of services will be published in the near future.

Revised organisation structures have been implemented in some areas with the establishment of Hospital Executive Committees in each of the hospitals. Proposals regarding the establishment of discreet Units of Management are under consideration. This will enable the devolution of resources and responsibility closer to the point of service delivery and will contribute to improved communications and decision making.

Strategic alliances with the University of Limerick and University College Cork are currently being developed and will provide the basis for a formal joint strategic approach to staff training, education and development in future years.

This report includes a demographic profile, key service developments, resource usage and comprehensive data on each of the hospitals in the region with comparisons to previous year's performance.

The statistical data reflects the increased activity and throughput, and the new service developments in the region over the past few years.

The document is published for reference and performance review purposes and the primary users will be service providers, management groups and appropriate external agencies.

In reviewing activity for 1999 one must acknowledge the tremendous commitment and dedication of all staff throughout the organisation in meeting the ever increasing health demands of the population.

**JOHN O'BRIEN**  
**ASSISTANT CHIEF EXECUTIVE OFFICER**

---

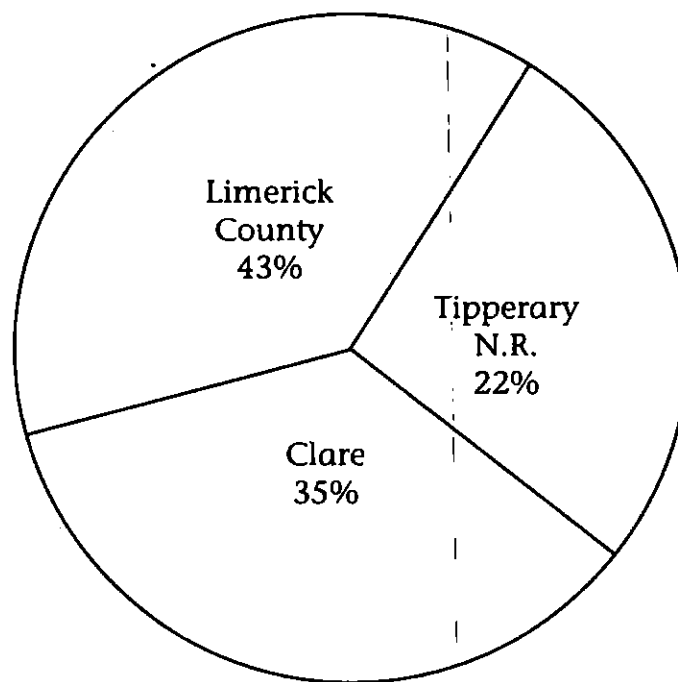
## Overview

---

### Demographic Profile

The population of the region is 317,069 people. 35.6% of the population reside in County Limerick, 29.6% in County Clare, 18.3% in Tipperary North Riding and 16.4% in Limerick County Borough.

### Geographical Distribution of Patients in Mid-Western Health Board



The dependency ratio (those under 15 years and those aged over 64 years expressed as a proportion of the remainder of the population) for the Mid-Western Regional Hospital is .56%. The national ratio is .54%.

In 1996, the national unemployment rate was 11.9% while the Mid-Western Health Board's rate was 9%. In May 1998, the rate for the Board region had fallen to 6.9% and continues to fall. This is the second lowest rate of any regional authority area.

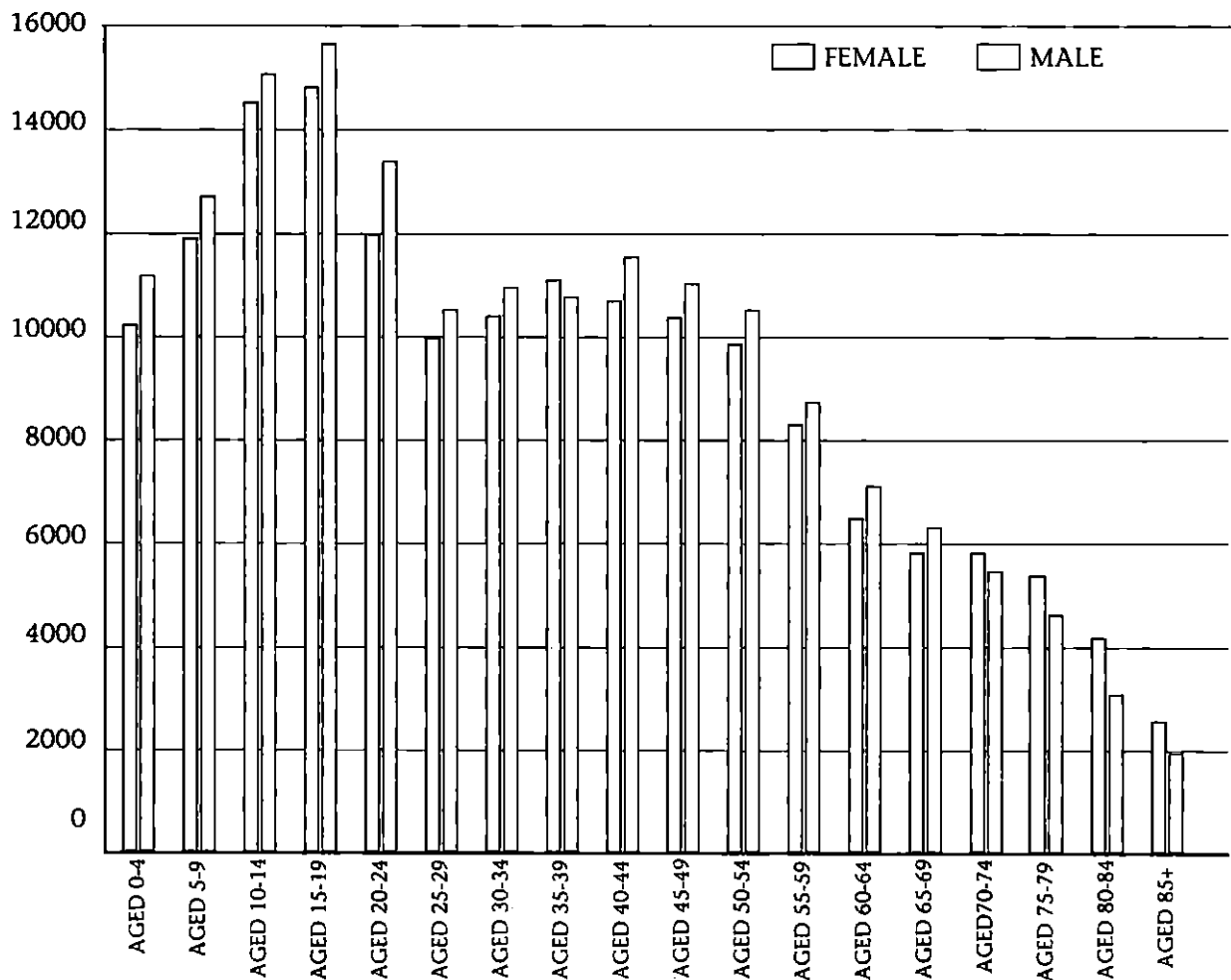
There were 3,933 births in the Mid-Western Health Board in 1998 with a total of 4,024 in 1999. The birth rate in the region has shown an increasing trend over the past number of years.

---

## Overview

---

Distribution of Age and Sex of Mid-Western HealthBoard



### Activity

In-patient activity was 36,940 compared with 37,940 in 1998 while day cases have increased significantly for the third year running from 13,249 in 1998 to 14,672 in 1999. This appears to represent a substitution for in-patient treatment.

The average length of stay increased from 5.90 in 1998 to 6.03 in 1999. Average length of stay has increased marginally due mainly to increased activity in general medicine as new services come on stream, such as cardiology and oncology.

Bed days used decreased from 224,066 in 1998 to 215,124 in 1999. The increase in bed days is attributed to service disruption from the threatened industrial action by junior doctors and the nurses strike in late 1999.

A total of 85,046 attendances at A & E Departments represents a decrease 4,024. Of those, 73,936 were new attendances while review attendances were 11,110.

Out-patient attendances increased from 101,194 in 1998 to 105,444 in 1999. The percentage of new attendances to out-patient clinics increased by 2%.

## Overview

### Summary In-Patient Activity 1998 and 1999

Specialty	In-Patients Treated		Average Length of Stay		Day Cases Treated	
	1998	1999	1998	1999	1998	1999
Medicine	12,408	12,343	31.74	29.88	2,661	3,201
Surgery	9,957	10,134	44.89	41.24	8,676	9,119
Orthopaedics	2,941	3,080	7.12	6.39	1,268	1,340
Obstetrics/ Gynaecology & Paediatrics	11,761	10,545	22.59	22.12	644	1,012
Psychiatry	873	838	18.27	22.88	0	0
<b>TOTAL</b>	<b>37,940</b>	<b>36,940</b>	<b>5.90</b>	<b>6.03</b>	<b>13,249</b>	<b>14,672</b>
		<b>1998</b>		<b>1999</b>		
<b>Accident &amp; Emergency</b>						
<b>New</b>		<b>75,775</b>		<b>73,936</b>		
<b>Return</b>		<b>13,295</b>		<b>11,110</b>		

### Summary of Out-Patient Activity 1998 and 1999

Specialty	No. of Clinics Held		New Patients		Return Patients		Total Patients	
	1998	1999	1998	1999	1998	1999	1998	1999
Medicine	1,221	1,472	4,533	5,693	17,760	24,847	22,293	30,540
Surgery	1,408	1,976	8,995	10,159	19,424	25,086	28,419	35,245
Obstetrics/ Gynaecology/ Paediatrics	778	724	4,122	4,208	18,041	17,990	22,163	22,198
Orthopaedics	1,078	519	6,010	4,141	22,309	13,320	28,319	17,461
<b>TOTAL</b>	<b>4,485</b>	<b>4,691</b>	<b>23,660</b>	<b>24,201</b>	<b>77,534</b>	<b>81,243</b>	<b>101,194</b>	<b>105,444</b>

## Overview

### Summary of Diagnostic Supports

	1998	1999
<b>Laboratory</b>	<b>681,134</b>	<b>697,175</b>
<b>Radiology</b>	<b>153,754</b>	<b>150,015</b>
<b>Physiotherapy</b>		
<b>In-Patient Treatments</b>	<b>18,896</b>	<b>13,180</b>
<b>Out-Patient Treatments</b>	<b>29,392</b>	<b>21,266</b>

### Waiting List

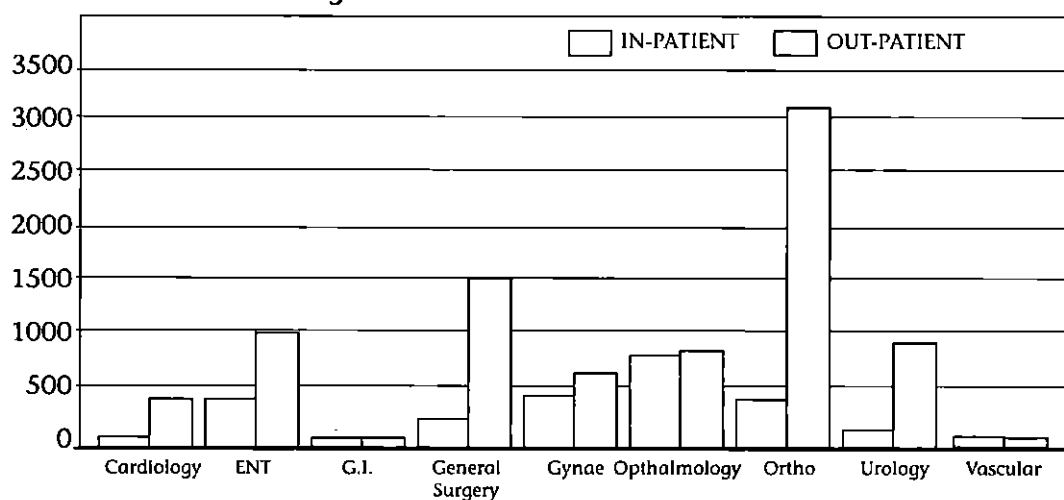
The number of public patients on the in-patient waiting list at 31st December 1999 was 1,608 which represents a 26% reduction on the previous year.

The out-patient waiting list increased/decreased during 1999.

The Board received £.919m in 1999 in respect of the Waiting List Initiative.

The number of patients on the waiting list in January 1999 amounted to 2,168. During the year a total of 3,135 were added to the list. 3,330 procedures were carried out during the year and a further 365 were removed through validation of the waiting lists. The year-end figure was 1,608 with a net reduction in 1999 of 560.

### In-Patient & Out-Patient Waiting Lists





## Overview

### Public Waiting Lists at 31st December 1999

RHD	4-12 Months	>12 Months	4-12 Months	>12 Months
	In-Patient		Out-Patient	
Medical	3	7	196	2
Surgical	560	426	1,462	575
Gynaecology	168	175	182	295
<b>Total</b>	<b>731</b>	<b>608</b>	<b>1,840</b>	<b>872</b>
<b>CROOM</b>				
Orthopaedics	74	195	355	1,797
<b>Total</b>	<b>74</b>	<b>195</b>	<b>355</b>	<b>1,797</b>
<b>ENNIS</b>				
Medial			0	
Surgery			270	
Gynaecology			44	
Orthopaedics			137	276
<b>Total</b>	<b>0</b>	<b>0</b>	<b>451</b>	<b>276</b>
<b>NENAGH</b>				
Medical				
Surgery			702	300
Gynaecology			18	44
Orthopaedics			69	177
<b>Total</b>	<b>0</b>	<b>0</b>	<b>789</b>	<b>521</b>
<b>Overall Total</b>	<b>805</b>	<b>803</b>	<b>3,435</b>	<b>3,466</b>

---

## Overview

---

### Orthodontic Service

The Orthodontic Service commenced treatment for 554 persons during the year. There are 2,039 persons on active treatment and 1,798 persons being monitored with 653 completed cases. At year-end, the waiting list for treatment was 1,341 and 2,388 for assessment.

### Summary of Orthodontic Activity

	1998	1999
Number of Completed Treatments	532	653
Number of Cases Commenced	543	554
Number of Active Treatments	2,508	2,039
Number of Cases Being Monitored	1,470	1,798

## Overview

### Resources Human Resources

The increase in WTE's is namely due to increased staffing as a result of commissioning new units.

#### Number of Staff (W.T.E.) 1998 and 1999

Number of Staff by Category	1998	1999
Medical	201.3	217.1
Nursing	811.7	845.1
Para Medical	165.2	184.1
Non-Nursing	361.2	369.3
Administrative	186.2	228.6
Others	11.5	11.3
Waiting List Initiative	12.0	13.5
<b>Total</b>	<b>1749.1</b>	<b>1869.0</b>

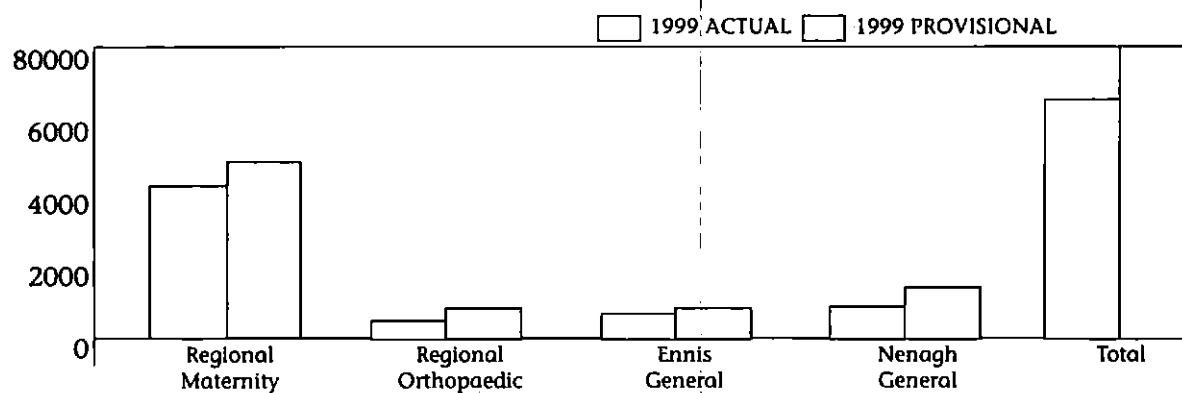
### Finance

Expenditure on Acute Hospital Services in 1999 was £71.84m (J. Cowhey to check figure).

#### Expenditure (Provisional) 1998 and 1999

	1998 (£000)	1999 (£000)
Pay	51,505	59,449
Non Pay	20,087	24,292
Total (Gross)	71,592	83,741
Income	10,506	11,901
Total (Nett)	61,086	71,840

#### Acute Hospitals Net Expenditure



---

## Service Developments

---

### Mid-Western Regional Hospitals

#### Patient Services

##### Orthopaedics

The Trauma Theatre at the Regional Hospital, Dooradoyle opened and both trauma and elective work are now managed jointly.

##### Haematology

A Transfusion Committee, with representatives from the Regional Hospital and St. John's Hospitals was established.

Protocols were introduced in the Blood Bank for the dispensing of Factors 8 and 9.

A number of developments have taken place in the Haematology Services including the recruitment of senior nurses in stem cell transplantation and histology.

A Nurse-led Haematology review Clinic was established for patients with malignancies.

A Haemovigilance Sister and Technical Officer were appointed.

A computerised programme in Haematology commenced and an Ambulatory Care service for day patients was established in the Haematology/Oncology Day Ward.

##### Cardiology

Additional funding of £200,000 was provided to meet the full-year costs of developments in the Cardiology Service, including a pacemaker service which commenced in late 1998.

##### Cancer

Additional funding of £803,000 was received for Cancer services to meet the full year costs of developments which commenced in 1998, and a number of key appointments of medical (including a Consultant Oncologist), nursing and paramedical were made.

A Breast Clinic was also established and a smoking cessation service was introduced.

Developments in Haematology complement Cancer Services.

##### Oral Surgery

The Department of Oral Surgery was established at the Regional Hospital, Dooradoyle.

##### Demography/Birth Rate

A number of additional medical personnel were recruited to the Regional Maternity Hospital to enhance services particularly in Neonatology and Anaesthetics.

---

## Service Developments

---

### Diagnostic Services

#### Pathology

A Laboratory Technician to facilitate ante-natal HIV testing was appointed.

Implementation of the new Laboratory Information System commenced.

#### Radiology

The new Radiology Department was commissioned in January.

### Commissioning

#### Commissioning of New Units

The following were commissioned:-

Radiology, Pathology, Physical Medicine, Accident and Emergency, Medical Records, C.S.S.D., Pharmacy, Concourse and Kitchen.

### Service Management

Hospital Executive Committees with multi-disciplinary input are in place in all acute hospitals.

Arrangements at the Regional Hospitals are currently under review due to complexity and size. Proposals for a more devolved system of management are under consideration. The purpose is to provide operational management locally.

Key tasks include the implementation of the service and operational plans, service integration, consultation and communications, and performance review.

Hospital Advisory Groups with multi-disciplinary participation provide input on a consultative basis on operational policy and practice.

Organisational functions e.g. Finance, H.R., Management Services and Technical Services' have been devolved to support General Managers locally.

---

## Service Developments

---

A Bed Manager was appointed to the Regional General Hospital, and has developed Admission and Discharge Protocols and Systems to report on bed management and usage. The Bed Manager takes a lead role in the management of the Waiting List Initiative.

Ward Clerks were appointed on a pilot basis to enable nursing staff to focus on direct patient care.

An Orthopaedic Nurse Specialist was appointed to validate the waiting list and develop a standardised scoring system for prioritisation and commence the measurement of post-operative outcomes

### Value for Money

A Clinical Cost Manager was appointed to monitor clinical supplies and develop protocols for usage and standardisation.

A Drugs and Therapeutic Committee was established to advise on drug usage and to develop protocols for the introduction of new drugs.

A review of Pharmacy and Laboratory manpower services was completed in 1999, and its recommendations are under consideration.

### Quality

A House Keeping Standards Committee was established to review practices and implement revised standards.

The process to achieve ISO Standard for the Kitchen at the Regional General Hospital commenced.

Clinical Pathways for ENT and Ophthalmology treatment were developed.

Clinical Nurse policies and procedures were developed.

---

## Service Developments

---

### General Hospital, Ennis

#### Key Developments

##### Patient Services

A Palliative Care Nurse was appointed in early 1999 and has established a more focused service for cancer patients and their relatives.

Facilities for Nursing Mothers under the Women's Health Programme were provided.

A Medical Audit of all patients admitted and discharged through the Elderly Care Unit commenced and is undertaken on an ongoing basis.

Medical Equipment was purchased through a Special Capital Allocation.

##### Diagnostic Services

In October 1999, the Laboratory at Ennis General Hospital achieved 1st in Ireland and 23rd Internationally on the External Quality Assessment Programme with Abbott Laboratories Ireland Ltd., Diagnostics Division.

##### Value for Money

A review of the Catering Facilities was undertaken with a view to centralising Catering Facilities during 2000 at St. Joseph's Hospital.

---

## Service Developments

---

### General Hospital, Nenagh

#### Key Developments

##### Patient Services

The role of the Consultant Physician in Geriatric Medicine has been extended to include a commitment to the Elderly Units in Tipperary (NR). An additional Consultant Physician, with a special interest in gastroenterology, commenced in February 1999.

A Palliative Care Nurse was appointed early in 1999 and has established a more focused service for cancer patients and their relatives.

Equipment has been purchased for the Ophthalmic Service and a Clinic Room has been refurbished with a view to commencing services in 2000.

##### Research/Audit

A Medical Admissions Predictor Study commenced in conjunction with the Department of Public Health. To date, over 2,000 patients' details have been recorded.

The Clinical Audit System continued as a pilot project during 1999. Computer hardware has been installed to enable access to the system from the Surgical Wards.

A manual of Clinical Nurse Policies and Procedures was compiled by the Director of Nursing on Intravenous Drug Administration, Drug Administration generally including administration of Controlled Drugs, and Blood Transfusion.

An admissions procedure and policy statements on hand washing, disposal of sharps and contaminants (clinical waste), needlestick injury, aseptic procedures, hepatitis B, handling of blood and human tissues and blood transfusions were developed.

A Drugs and Therapeutics Committee has been established and meets on a three-monthly basis.

A GP Liaison Committee was formed and comprises of members from the hospital staff and four representatives of the GP's in the Tipperary (NR) area.



## Acute Services

### Summary of Activity Acute Hospitals

	1998	1999		1998	1999
<b>IN-PATIENT ACTIVITY</b>			<b>PHYSIOTHERAPY</b>		
Bed Complement	704	704	In-Patient Treatments	18,896	29,392
Available Bed Days	236,167	235,066	Out-Patient Treatments	13,180	21,266
Bed Days Used	224,066	215,124	<b>Total</b>	<b>32,076</b>	<b>50,658</b>
Percentage Occupancy	95%	92%			
Patients Treated	37,940	36,940	<b>Accident &amp; Emergency</b>		
Average Stay	5.90	6.03	New Patients	75,775	73,936
Day Cases	13,249	14,672	Review Patients	13,295	11,110
			<b>Total</b>	<b>89,070</b>	<b>85,046</b>
<b>DIAGNOSTIC PROCEDURES</b>			<b>OUT-PATIENTS</b>		
Bronchoscopy	305	316	New	23,660	24,201
EEG	597	609	Review	77,534	81,243
ECG	17,801	19,241	<b>Total</b>	<b>101,194</b>	<b>105,444</b>
Stress ECG	1,296	1,420			
Minor Operations	170	141	<b>Pathology Specimens</b>		
Pulmonary Function	2,828	2,549	Blood Bank	14,079	14,224
Echocardiography	4,428	5,850	Blood Bank On-Call	7,870	8,008
			<b>Total</b>	<b>21,949</b>	<b>22,232</b>
<b>HAEMO-DIALYSIS</b>	<b>4,680</b>	<b>5,257</b>	Bacteriology	142,985	148,662
			Bacteriology On-Call	9,008	8,356
<b>RADIOLOGY</b>			<b>Total</b>	<b>151,993</b>	<b>157,018</b>
Regular	108,329	105,728	Biochemistry	228,246	222,181
Sessions	11,451	0	Biochemistry On-Call	34,468	35,450
On-Call	33,974	44,287	<b>Total</b>	<b>262,714</b>	<b>257,631</b>
<b>Total</b>	<b>153,754</b>	<b>150,015</b>	Haematology	195,184	210,859
<b>X-RAY CATEGORIES</b>			Haematology On-Call	36,821	38,252
CXR	38,201	37,401	<b>Total</b>	<b>232,005</b>	<b>249,111</b>
SXR	4,652	4,326	Histopathology	12,473	11,183
Spine	9,433	9,347	Histopathology On-Call	0	0
Abdomen	8,297	7,411	<b>Total</b>	<b>12,473</b>	<b>11,183</b>
Other Routine	60,915	58,389	<b>All Specimens</b>		
CT Scan	6,140	6,940	Normal	592,967	607,109
Ultrasound	17,415	17,974	On-Call	88,167	90,066
Mammograms	2,285	2,263	<b>Total</b>	<b>681,134</b>	<b>697,175</b>
Nuclear Medicine	1,151	1,127	<b>Specimens Referred</b>		
Barium Meal	741	683	Limerick Regional	36,663	41,088
Barium Enemas	793	705	UCD & Dublin Hospitals	3,795	3,724
IVP	1,204	1,077	UCG	1,287	1,527
IVC	1	7	Other Laboratories	969	1,003
MCG	165	100	<b>Total</b>	<b>42,714</b>	<b>47,342</b>
Chole	33	46			
OP Chole	13	7			
T Tube	8	21			
Myelogram	4	8			
Venogram	432	433			
Angio Aortogram	1,115	1,183			
Tomos	195	188			
Others	561	379			
<b>Total</b>	<b>153,754</b>	<b>150,015</b>			

## Acute Services

### Summary of Activity by Speciality

	In-patients						Day Cases					
	MWRH		GHE		GHN		MWRH		GHE		GHN	
Specialty	1998	1999	1998	1999	1998	1999	1998	1999	1998	1999	1998	1999
<b>Medicine</b>												
General Medicine	4,013	3,536	2,150	2,248	2,451	2,641	1,344	1,313	6	17	51	38
Oncology	1	0	-	-	-	-	55	103	-	-	-	-
Cardiology	962	674	-	-	-	-	630	668	-	-	-	-
Geriatrics	2,093	2,375	631	662	0	20	204	552	5	3	15	0
Haematology	107	187	-	-	-	-	314	473	-	-	-	-
Respiratory Medicine	-	-	-	-	-	-	37	34	-	-	-	-
<b>TOTAL MEDICINE</b>	<b>7,176</b>	<b>6,772</b>	<b>2,781</b>	<b>2,910</b>	<b>2,451</b>	<b>2,661</b>	<b>2,584</b>	<b>3,143</b>	<b>11</b>	<b>20</b>	<b>66</b>	<b>38</b>
<b>Surgery</b>												
General Surgery	2,904	2,877	1,692	1,736	1,680	1,755	1,809	2,194	1,356	1,288	1,183	1,144
Vascular	159	161	-	-	-	-	-	26	-	-	-	-
G.I.	261	199	-	-	-	-	419	472	-	-	-	-
Urology	278	202	-	-	28	16	815	754	85	81	285	287
ENT	1,594	1,715	-	-	-	-	878	1,028	-	-	-	-
Ophthalmology	1,193	1,257	-	-	-	-	942	968	-	-	-	-
Oral Surgery	167	213	-	-	-	-	354	384	-	-	-	-
Dental	-	-	1	3	-	-	114	151	252	190	184	152
<b>TOTAL SURGERY</b>	<b>6,556</b>	<b>6,624</b>	<b>1,693</b>	<b>1,739</b>	<b>1,708</b>	<b>1,771</b>	<b>5,331</b>	<b>5,977</b>	<b>1,693</b>	<b>1,559</b>	<b>1,652</b>	<b>1,583</b>
<b>Obs/Gynae/Paeds</b>												
Gynaecology	1,238	1,048	-	1	-	-	554	907	61	59	-	-
Obstetrics	5,959	5,821	-	-	-	-	-	-	-	-	-	-
Neonatal	772	725	-	-	-	-	-	-	-	-	-	-
Paediatrics	3,792	2,950	-	-	-	-	29	46	-	-	-	-
<b>TOTAL OBS</b>	<b>7,969</b>	<b>10,544</b>	<b>-</b>	<b>-</b>	<b>-</b>	<b>-</b>	<b>583</b>	<b>953</b>	<b>61</b>	<b>59</b>	<b>-</b>	<b>-</b>
Orthopaedics	2,941	3,080	-	-	-	-	1,268	1,340	-	-	-	-
Psychiatry	873	838	-	-	-	-	-	-	-	-	-	-
<b>OVERALL TOTAL</b>	<b>25,515</b>	<b>27,858</b>	<b>4,474</b>	<b>4,649</b>	<b>4,159</b>	<b>4,432</b>	<b>9,766</b>	<b>11,413</b>	<b>1,765</b>	<b>1,638</b>	<b>1,718</b>	<b>1,621</b>

## Acute Services

### Summary of Activity by Speciality

	New Patients						Return Patients					
Out-patients	MWRH		GHE		GHN		MWRH		GHE		GHN	
Specialty	1998	1999	1998	1999	1998	1999	1998	1999	1998	1999	1998	1999
<b>Medicine</b>												
General Medicine	566	542	346	322	524	441	2,954	2,589	789	1,045	1,190	1,421
Oncology	593	1,115	-	-	-	-	2,821	2,996	-	-	-	-
Cardiology	394	458	-	-	-	-	870	1,147	-	-	-	-
Geriatrics	190	213	-	-	-	51	875	1,223	202	221	-	48
Haematology	208	244	-	-	-	-	4,045	6,719	-	-	-	-
Respiratory												
Medicine	209	223	-	-	-	-	821	827	-	-	-	-
Diabetic/Endocrine	205	312	-	-	-	-	1,632	1,637	-	-	-	-
Dermatology	342	310	-	-	-	-	259	265	-	-	-	-
Gastroenterology	215	174	-	-	-	-	357	330	-	-	-	-
Neurology	174	135	-	-	-	-	292	313	-	-	-	-
Renal	66	67	-	-	-	-	544	594	-	-	-	-
Rheumatology	69	56	-	-	-	-	120	108	-	-	-	-
STD	691	966	-	-	-	-	2,215	3,278	-	-	-	-
<b>TOTAL MEDICINE</b>	<b>3,922</b>	<b>4,815</b>	<b>346</b>	<b>322</b>	<b>524</b>	<b>492</b>	<b>17,805</b>	<b>22,026</b>	<b>991</b>	<b>1,266</b>	<b>1,190</b>	<b>1,469</b>
<b>Surgery</b>												
General Surgery	1,406	1,158	1,731	1,539	1,038	920	3,782	3,642	2,566	2,421	1,797	1,833
Vascular	164	155	-	-	-	-	632	665	-	-	-	-
G.I.	215	247	-	-	-	-	351	399	-	-	-	-
Urology	437	270	126	144	299	257	986	934	396	472	870	867
ENT	1,363	1,833	445	397	574	651	2,498	2,696	536	635	707	764
Ophthalmology	1,950	1,840	-	-	323	217	7,677	8,301	-	-	473	323
Eye Casualty	410	416	-	-	-	-	355	307	-	-	-	-
Orthoptics	148	115	-	-	-	-	793	827	-	-	-	-
Pains Clinic	57	64	-	-	-	-	96	86	-	-	-	-
<b>TOTAL SURGERY</b>	<b>6,150</b>	<b>6,098</b>	<b>2,302</b>	<b>2,080</b>	<b>2,234</b>	<b>2,045</b>	<b>17,170</b>	<b>17,857</b>	<b>3,498</b>	<b>3,528</b>	<b>3,847</b>	<b>3,787</b>
<b>Obs/Gynae/Paeds</b>												
Gynaecology	422	407	248	248	132	128	595	639	467	470	253	218
Obstetrics	2,025	2,118	401	405	-	-	10,611	10,471	1,845	2,104	336	379
Paediatrics	580	618	176	151	138	133	2,872	2,718	563	534	499	457
<b>TOTAL OBS</b>	<b>3,027</b>	<b>3,143</b>	<b>825</b>	<b>804</b>	<b>270</b>	<b>261</b>	<b>14,078</b>	<b>13,828</b>	<b>2,875</b>	<b>3,108</b>	<b>1,088</b>	<b>1,054</b>
Orthopaedics	3,490	3,931	240	73	330	137	12,781	12,959	1,044	146	807	215

## Acute Services

### Summary of Resources

#### Summary of Beds by Specialty 1998 and 1999

	1998	1999
General Surgery	110	110
Intensive Care Unit	6	6
Orthopaedic	101	101
General Medicine*	210	210
Geriatric Medicine	18	18
Coronary Care Unit	7	7
Paediatrics	55	55
Gynaecology	19	19
E.N.T.	16	16
Ophthalmology	12	12
Psychiatry	51	51
Obstetrics	80	80
Neo-Natal	19	19
<b>Total</b>	<b>704</b>	<b>704</b>
Day Beds	57	61

\* Includes Geriatric Medicine for Regional Hospital, Dooradoyle

#### Summary of Activity 1998 and 1999

	1998	1999
Number of In-Patients Treated	37,940	36,940
Number of Day Patients Treated	13,249	14,672
Number of Out-Patients Clinics Held	4,485	4,691
Number of Out-Patients Treated – New	23,660	24,201
Number of Out-Patients Treated – Return	77,534	81,243
Number of Patients Treated in A&E	89,070	85,046
Number of X-Ray Examinations	153,753	150,015
Number of Laboratory Examinations	681,134	697,175

## Acute Services

### Summary of Resources

#### Number of Staff (W.T.E.) 1998 and 1999

Number of Staff by Category	1998	1999
Medical	201.3	217.1
Nursing	811.7	845.1
Para Medical	165.2	184.1
Non-Nursing	361.2	369.3
Administrative	186.2	228.6
Others	11.5	11.3
Waiting List Initiative	12.0	13.5
<b>Total</b>	<b>1749.1</b>	<b>1869.0</b>

### Acute Hospitals Expenditure

Hospital	1998 ACTUAL £000					1999 PROVISIONAL £000					% CHANGE	
	Pay	Non Pay	Total	Income	Net Total	Pay	Non Pay	Total	Income	Net Total	98/99	
<b>Regional</b>	29,210	13,673	42,883	6,315	36,568	34,690	17,360	52,050	7,210	44,840	22.6	
<b>Regional Maternity</b>	5,933	1,363	7,296	1,336	5,960	6,767	1,519	8,286	1,501	6,785	13.8	
<b>Regional Orthopaedic</b>	4,116	1,657	5,773	1,059	4,714	4,423	1,638	6,061	1,180	4,881	3.5	
<b>Hospitals Total</b>	<b>39,259</b>	<b>16,693</b>	<b>55,952</b>	<b>8,710</b>	<b>47,242</b>	<b>45,880</b>	<b>20,517</b>	<b>66,397</b>	<b>9,891</b>	<b>56,506</b>	<b>19.6</b>	
<b>Ennis General</b>	6,631	1,746	8,377	912	7,465	7,329	1,851	9,180	1,032	8,148	9.1	
<b>Nenagh General</b>	5,615	1,648	7,263	884	6,379	6,240	1,924	8,164	978	7,186	12.7	
<b>Total Expenditure</b>	<b>51,505</b>	<b>20,087</b>	<b>71,592</b>	<b>10,506</b>	<b>61,086</b>	<b>59,449</b>	<b>24,292</b>	<b>83,741</b>	<b>11,901</b>	<b>71,840</b>	<b>17.6</b>	

## Acute Services

### Summary of In-Patient Activity 1998 and 1999

Specialty	In-Patients Treated		Average Length of Stay		Day Cases Treated	
	1998	1999	1998	1999	1998	1999
<b>MEDICINE</b>						
Cardiology	962	674	6.36	7.41	630	668
General Medicine	8,614	8,425	6.52	5.88	1,401	1,368
Geriatric Medicine	2,724	3,057	8.61	7.70	224	555
Haematology	107	187	9.25	8.89	314	473
Oncology	1	0	1.00	0.00	55	103
Respiratory Medicine	0	0	0.00	0.00	37	34
<b>SURGERY</b>						
Dentistry	1	3	1.50	1.00	550	493
E.N.T.	1,594	1,715	3.43	2.91	878	1,028
Gastro-Intestinal	261	199	8.55	8.73	419	472
General Surgery	5,673	6,368	6.16	5.75	4,348	4,626
Ophthalmology	1,193	1,257	2.73	2.20	942	968
Oral Surgery	167	213	3.44	3.79	354	384
Urology	758	218	5.14	6.03	1,185	1,122
Vascular Surgery	310	161	13.94	11.83	0	26
<b>ORTHOPAEDICS</b>	2,941	3,080	7.12	6.39	1,268	1,340
<b>OBSTETRICS/GYNAECOLOGY/PAEDIATRICS</b>						
Gynaecology	1,238	1,049	3.94	2.79	615	966
Neo-Natal	772	725	11.68	11.97	0	0
Obstetrics	5,959	5,821	3.69	3.75	0	0
Paediatrics	3,792	2,950	3.28	3.61	29	46
<b>PSYCHIATRY</b>	873	838	18.27	22.88	0	0
<b>Total</b>	<b>37,940</b>	<b>36,940</b>	<b>5.90</b>	<b>6.03</b>	<b>13,249</b>	<b>14,672</b>
<b>SUMMARY OF DIAGNOSTIC SUPPORTS</b>						
	<b>1998</b>		<b>1999</b>			
<b>Accident &amp; Emergency</b>						
New	75,775		73,936			
Return	13,295		11,110			
<b>Laboratory</b>	681,134		697,175			
<b>Radiology</b>	153,754		150,015			
<b>Physiotherapy</b>						
In-Patient Treatments	18,896		13,180			
Out-Patient Treatments	29,392		21,266			

## Acute Services

### Summary of Out-Patient Activity 1998 and 1999

Specialty	No. of Clinics Held		New Patients		Return Patients		Total Patients	
	1998	1999	1998	1999	1998	1999	1998	1999
<b>MEDICINE</b>								
Anti-Coagulation	0	53	0	107	0	6,013	0	6,120
Cardiology	50	51	394	458	870	1,147	1,264	1,605
Dermatology	26	25	342	310	259	265	601	575
Diabetic/Endocrine	50	76	205	312	1,632	1,637	1,837	1,949
Gastroenterology	45	41	215	174	357	330	572	504
General Medicine	404	417	1,436	1,305	4,933	5,055	6,369	6,360
Genito-Urinary Medicine	191	222	691	966	2,215	3,278	2,906	4,244
Geriatric Medicine	122	144	190	264	1,077	1,492	1,267	1,756
Haematology	83	61	208	137	4,405	706	4,613	843
Neurology	24	23	174	135	292	313	466	448
Oncology/Breast	0	50	0	560	0	179	0	739
Oncology/Colorectal	12	28	97	275	12	276	109	551
Oncology/Haematology	0	42	0	8	0	212	0	220
Oncology/St. Luke's	43	72	180	272	127	2,329	307	2,601
Pain Clinic	16	16	57	64	96	86	153	150
Renal	45	42	66	67	544	594	610	661
Respiratory Medicine	92	91	209	223	821	827	1,030	1,050
Rheumatology	18	18	69	56	120	108	189	164
<b>SURGERY</b>								
E.N.T.	238	286	2,382	2,881	3,741	4,095	6,123	6,976
Eye Casualty	96	98	410	416	355	307	765	723
Gastro-Intestinal	46	33	215	247	351	399	566	646
General Surgery	587	563	4,175	3,617	8,145	7,896	12,320	11,513
Ophthalmology	115	682	639	2,057	3,155	8,624	3,794	10,681
Orthoptics	135	125	148	115	793	827	941	942
Urology	140	143	862	671	2,252	2,273	3,114	2,944
Vascular	51	46	164	155	632	665	796	820
<b>OBSTETRICS/GYNAECOLOGY/PAEDIATRICS</b>								
Ante-Natal	269	269	2,426	2,523	12,792	12,954	15,218	15,477
Gynaecology	185	178	802	783	1,315	1,327	2,117	2,110
Paediatrics	324	277	894	902	3,934	3,709	4,828	4,611
<b>ORTHOPAEDICS</b>								
Orthopaedic	835	266	2,936	826	13,791	4,570	16,727	5,396
Orthopaedic Injury	243	253	3,074	3,315	8,518	8,750	11,592	12,065
<b>Total</b>	<b>4,485</b>	<b>4,691</b>	<b>23,660</b>	<b>24,201</b>	<b>77,534</b>	<b>81,243</b>	<b>101,194</b>	<b>105,44</b>

## Acute Services

### Public Waiting Lists at 31st December 1999

RHD	4-12 Months		> 12 Months	
	In-patient		Out-patient	
Cardiology	1	6	196	2
E.N.T.	159	53	218	114
Gastro Intestinal	2	1	-	-
General Surgery	58	41	627	223
Gynaecology	168	175	182	295
Ophthalmology	335	312	277	135
Orthopaedics	-	-	-	-
Vascular	1	-	315	103
Urology	7	20	25	-
<b>Total</b>	<b>731</b>	<b>608</b>	<b>1,840</b>	<b>872</b>
<b>CROOM</b>				
Orthopaedics	-	-	355	1,797
T.H.R.	32	32	-	-
Other	42	163	-	-
<b>Total</b>	<b>74</b>	<b>195</b>	<b>355</b>	<b>1,797</b>
<b>ENNIS</b>				
E.N.T.	-	-	217	-
General Surgery	-	-	-	-
Gynaecology	-	-	44	-
Orthopaedics	-	-	137	276
Urology	-	-	53	-
<b>Total</b>	<b>-</b>	<b>-</b>	<b>451</b>	<b>276</b>
<b>NENAGH</b>				
E.N.T.	-	-	211	118
General Surgery	-	-	189	48
Gynaecology	-	-	18	44
Ophthalmology	-	-	184	-
Orthopaedics	-	-	69	177
Urology	-	-	118	134
<b>Total</b>	<b>-</b>	<b>-</b>	<b>789</b>	<b>3,466</b>
<b>Overall Total</b>	<b>805</b>	<b>803</b>	<b>3,435</b>	<b>3,466</b>



## Summary of Mid-Western Regional Hospital 1998-1999

	1998	1999		1998	1999
<b>IN-PATIENT ACTIVITY</b>			<b>PHYSIOTHERAPY</b>		
Bed Complement	360	<b>360</b>	In-Patient Treatments	14,182	10,291
Available Bed Days	122,737	<b>122,857</b>	Out-Patient Treatments	10,058	13,559
Bed Days Used	121,334	<b>115,665</b>	<b>Total</b>	<b>24,240</b>	<b>23,850</b>
Percentage Occupancy	99%	<b>94%</b>			
Patients Treated	21,095	<b>19,855</b>	<b>Accident &amp; Emergency</b>		
Average Stay	5.60	<b>5.84</b>	New Patients	52,932	51,304
Day Cases	8,522	<b>10,136</b>	Review Patients	5,784	4,103
			<b>Total</b>	<b>58,716</b>	<b>55,407</b>
<b>MEDICAL PROCEDURES</b>			<b>OUT-PATIENTS</b>		
Bronchoscopy	305	<b>316</b>	New	14,148	15,253
EEG	597	<b>609</b>	Review	47,320	51,990
ECG	17,801	<b>19,241</b>	<b>Total</b>	<b>61,468</b>	<b>67,243</b>
Stress ECG	1,132	<b>1,190</b>			
Minor Operations	170	<b>141</b>	<b>Pathology Specimens</b>		
Pulmonary Function	2,828	<b>2,549</b>	Blood Bank	11,748	11,573
Echocardiography	4,428	<b>5,850</b>	Blood Bank On-Call	7,144	7,185
<b>HAEMO-DIALYSIS</b>	<b>4,680</b>	<b>5,257</b>	<b>Total</b>	<b>18,892</b>	<b>18,758</b>
<b>RADIOLOGY</b>			Bacteriology	124,154	129,274
Regular	53,041	50,676	Bacteriology On-Call	8,821	8,207
Sessions	11,451		<b>Total</b>	<b>132,975</b>	<b>137,481</b>
On-Call	21,372	30,936			
<b>Total</b>	<b>85,864</b>	<b>81,612</b>	Biochemistry	174,726	166,801
			Biochemistry On-Call	25,921	26,547
<b>X-RAY CATEGORIES</b>			<b>Total</b>	<b>200,647</b>	<b>193,348</b>
CXR	23,586	22,391	Haematology	134,755	140,699
SXR	2,720	2,258	Haematology On-Call	28,787	28,691
Spine	5,327	5,291	<b>Total</b>	<b>163,542</b>	<b>169,390</b>
Abdomen	5,931	4,477	Histopathology	12,473	11,183
Other Routine	31,497	29,551	Histopathology On-Call	0	0
CT Scan	6,140	6,940	<b>Total</b>	<b>12,473</b>	<b>11,183</b>
Ultrasound	4,558	4,791			
Mammograms	1,296	1,382	<b>All Specimens</b>		
Nuclear Medicine	1,151	1,127	Normal	457,856	459,530
Barium Meal	435	366	On-Call	70,673	70,630
Barium Enemas	483	411	<b>Total</b>	<b>528,529</b>	<b>530,160</b>
IVP	863	742			
IVC	1	7	<b>Specimens Referred</b>		
MCG	159	98	Limerick Regional		
Chole	18	21	UCD & Dublin Hospitals	3,795	3,724
OP Chole	6	3	UCG	1,053	1,278
T Tube	1	15	Other Laboratories	941	988
Myelogram	4	3	<b>Total</b>	<b>5,789</b>	<b>5,990</b>
Venogram	221	210			
Angio Aortogram	1,115	1,182			
Tomos	24	10			
Others	328	336			
<b>Total</b>	<b>85,864</b>	<b>81,612</b>			

There is a drop in Biochemistry figures since the introduction of the APEX system because of the incorporation of the Endocrine Laboratory into the main Laboratory, and the introduction of bar-coded specimen tubes.

## Activity by Specialty

### Mid-Western Regional Hospital

Specialty	Bed Days Used (excl. Day Cases)				Average Stay	In-Patient Discharges (excl. Day Cases)			
	Public	Private	Non-Des	Total		Public	Private	Non-Des	Total
Cardiology	1,447	1,796	1,041	4,284	7.41	282	327	65	674
E.N.T.	2,825	2,177	24	5,026	2.91	886	828	1	1,715
Gastro Intestinal	587	945	62	1,594	8.73	96	103	0	199
General Medicine	12,848	7,656	1,344	21,848	6.05	2,132	1,335	69	3,536
General Surgery	11,677	5,593	911	18,181	6.31	1,818	1,031	28	2,877
Geriatrics	12,659	4,121	584	17,364	7.18	1,687	653	35	2,375
Gynaecology	2,698	2,066	23	4,787	4.57	607	439	2	1,048
Haematology	784	720	6	1,510	8.89	96	89	2	187
Maxillofacial	555	237	0	792	3.79	156	57	0	213
Ophthalmology	1,536	1,229	3	2,768	2.20	635	622	0	1,257
Orthopaedics	3,300	1,211	169	4,680	2.89	1,151	456	16	1,623
Paediatrics	6,920	3,459	128	10,507	3.61	1,991	950	9	2,950
Respiratory Med.	2	0	0	2	0	0	0	0	0
Psychiatry	17,910	1,542	0	19,452	22.88	759	79	0	838
Urology	626	433	24	1,083	5.91	105	97	0	202
Vascular	974	689	124	1,787	11.83	97	57	7	161
<b>Total</b>	<b>77,348</b>	<b>33,874</b>	<b>4,443</b>	<b>115,665</b>	<b>5.84</b>	<b>12,498</b>	<b>7,123</b>	<b>234</b>	<b>19,855</b>

Specialty	Day Cases			
	Public	Private	Non-Des	Total
Cardiology	306	362	0	668
Dental	150	1	0	151
E.N.T.	609	419	0	1,028
Gastro Intestinal	200	272	0	472
General Medicine	836	477	0	1,313
General Surgery	1,413	781	0	2,194
Geriatrics	356	196	0	552
Gynaecology	437	470	0	907
Haematology	342	131	0	473
Maxillofacial	312	72	0	384
Oncology	76	27	0	103
Ophthalmology	602	366	0	968
Orthopaedics	41	22	0	63
Paediatrics	33	13	0	46
Respiratory Med.	31	3	0	34
Urology	426	328	0	754
Vascular	14	12	0	26
<b>Total</b>	<b>6,184</b>	<b>3,952</b>	<b>0</b>	<b>10,136</b>

Out-Patient Report				
	A&E	OPD	Dialysis	
New	51,304	15,253		
Return	4,103	51,990		
<b>Total</b>	<b>55,407</b>	<b>67,243</b>	<b>5,257</b>	
Number of Beds Available				
	Public	Private	Non-Des	Total
7-Day	213	105	13	331
5-Day				
Sub-Total	213	105	13	331
Day Beds	12	12		24
<b>Total</b>	<b>225</b>	<b>117</b>	<b>13</b>	<b>355</b>
In-Patient Admissions				
A&E	12,626			
Other	2,973			
Elective	4,227			
<b>Total</b>	<b>19,826</b>			
Day Cases	10,136			

## Mid-Western Regional Hospital

### Resources

#### Summary of Beds by Specialty 1998 and 1999

	1998	1999
General Surgery	60	60
Intensive Care Unit	6	6
Orthopaedic	12	12
General Medicine incl. Geriatric Medicine	122	122
Coronary Care Unit	7	7
Paediatrics	55	55
Gynaecology	19	19
E.N.T.	16	16
Ophthalmology	12	12
Psychiatry	51	51
<b>Total</b>	<b>360</b>	<b>360</b>
Day Beds	35	35

#### Summary of Activity 1998 and 1999

	1998	1999
Number of In-Patients Treated	21,095	19,855
Number of Day Patients Treated	8,522	10,136
Number of Out-Patients Clinics Held	2,789	3,076
Number of Out-Patients Treated – New	14,148	15,253
Number of Out-Patients Treated – Return	47,320	51,990
Number of Patients Treated in A&E	58,716	55,407
Number of X-Ray Examinations	85,864	81,612
Number of Laboratory Examinations	528,529	530,160

#### Expenditure (Provisional) 1998 and 1999

	1998 (£000)	1999 (£000)
Pay	29,210	34,690
Non Pay	13,673	17,360
<b>Total (Gross)</b>	<b>42,883</b>	<b>52,050</b>
Income	6,315	7,210
<b>Total (Nett)</b>	<b>36,568</b>	<b>44,840</b>

## Mid-Western Regional Hospital

### Resources

#### Number of Staff (W.T.E.) 1998 and 1999

Number of Staff by Category	1998	1999
Medical	124.8	135.7
Nursing	417.4	442.9
Para Medical	124.7	143.4
Non-Nursing	187.8	195.9
Administrative	122.2	157.8
Others	10.5	10
Waiting List Initiative	12	13.5
<b>Total</b>	<b>999.4</b>	<b>1,099.2</b>

#### Geographical Distribution - In-Patient & Day Case

Limerick County	Limerick City	Clare	Tipperary N.R.	Tipperary S.R.	S.H.B.	Others	Total
10,992	9,030	6,376	2,501	252	366	474	29,991
36.65%	30.11%	21.26%	8.34%	0.84%	1.22%	1.58%	100.00%

#### Age Profile - In-Patient

Age	Admissions	% of Total	Bed Days	% of Total	Average Stay	*Ratio of Pats Bed Days	Avg. Adm.
Under 1	1,028	5.18	3,686	3.20	3.59	1:0.62	1.26
1 - 15	3,316	16.70	10,406	9.04	3.14	1:0.54	1.14
16 - 35	3,851	19.40	18,791	16.33	4.88	1:0.84	1.19
36 - 55	3,561	17.94	21,214	18.44	5.95	1:1.03	1.23
56 - 65	2,010	10.12	14,324	12.45	7.12	1:1.23	1.31
66 - 75	2,756	13.88	21,763	18.92	7.89	1:1.36	1.37
76 - 85	2,607	13.13	19,556	17.00	7.50	1:1.29	1.36
86+	726	3.66	5,313	4.62	7.32	1:1.26	1.28

\* This is calculated by dividing % Bed Days by % of Total Patients.

## Mid-Western Regional Hospital

### Resources

#### Out-Patient Clinics

Specialty	Sessions	New	Return	Total
Anti-Coagulation	53	107	6,013	6,120
Cardiology	51	458	1,147	1,605
Dermatology	25	310	265	575
Diabetic/Endocrine	76	312	1,637	1,949
E.N.T.	194	1,833	2,696	4,529
Eye Casualty	98	416	307	723
Gastro-Intestinal	33	247	399	646
Gastroenterology	41	174	330	504
General Medicine	181	542	2,589	3,131
General Surgery	160	1,158	3,642	4,800
Genito-Urinary Medicine	222	966	3,278	4,244
Geriatric Medicine	97	213	1,223	1,436
Gynaecology	94	407	639	1,046
Haematology	61	137	706	843
Neurology	23	135	313	448
Oncology/Breast	50	560	179	739
Oncology/Colorectal	28	275	276	551
Oncology/Haematology	42	8	212	220
Oncology/St. Luke's	72	272	2,329	2,601
Ophthalmology	649	1,840	8,301	10,141
Orthopaedic Injury	253	3,315	8,750	12,065
Orthoptics	125	115	827	942
Paediatrics	173	618	2,718	3,336
Pain Clinic	16	64	86	150
Renal	42	67	594	661
Respiratory Medicine	91	223	827	1,050
Rheumatology	18	56	108	164
Urology	62	270	934	1,204
Vascular	46	155	665	820
<b>Total</b>	<b>3,076</b>	<b>15,253</b>	<b>51,990</b>	<b>67,243</b>

## Regional Maternity Hospital

### Activity

#### Summary of Regional Maternity Hospital 1998 & 1999

	1998	1999		1998	1999
<b>IN-PATIENT ACTIVITY</b>			<b>PHYSIOTHERAPY</b>		
Bed Complement	99	99	In-Patient Treatments		8,148
Available Bed Days	36,135	35,226	Out-Patient Treatments		2,657
Bed Days Used	30,923	31,076	<b>Total</b>		<b>10,805</b>
Percentage Occupancy	86%	88%			
Patients Treated	6,731	6,546	<b>OUT-PATIENTS</b>		
Average Stay	4.24	4.61	New	2,025	2,118
Day Cases			Review	10,611	10,471
<b>HAEMO-DIALYSIS</b>			<b>Total</b>	<b>12,636</b>	<b>12,589</b>
<b>RADIOLOGY</b>	8,914	9,532			
<b>Total</b>	<b>8,914</b>	<b>9,532</b>			
<b>X-RAY CATEGORIES</b>					
CXR	701	602			
SXR	8	5			
Spine	2	10			
Abdomen	82	101			
Other Routine	12	11			
Ultrasound	8,109	8,803			
<b>Total</b>	<b>8,914</b>	<b>9,532</b>			

Specialty	Bed Days Used (excl. Day Cases)				Average Stay	In-Patient Discharges (excl. Day Cases)			
	Public	Private	Non-Des	Total		Public	Private	Non-Des	Total
Neo-Natal			7,849	7,849	11.97			725	725
Obstetrics	15,156	8,071		23,227	3.75	4,044	1,777		5,821
<b>Total</b>	<b>15,156</b>	<b>8,071</b>	<b>7,849</b>	<b>31,076</b>	<b>4.61</b>	<b>4,044</b>	<b>1,777</b>	<b>725</b>	<b>6,546</b>

Out-Patient Report				
New	2,118			
Return	10,471			
Total	12,589			
Number of Beds Available				
	Public	Private	Non-Des	Total
7-Day	53	27	19	99
5-Day				
Sub-Total	53	27	19	99
Day Beds				
Total	53	27	19	99
In-Patient Admissions				
A&E			5,748	
Other Non-Elective			801	
Total (excl. Day Cases)			6,549	

## Regional Maternity Hospital

### Activity

#### Top 10 Principal Diagnosis'

Principal Diagnosis	Total	Length of Stay	Bed Days	Day Cases	Average Age
Mature Cataract	1,037	1.78	1,429	234	74
Resp System Disease NEC	641	5.55	3,541	3	41
Chronic Tonsillitis	517	2.72	1,395	4	17
Chest Pain Nos	492	3.43	1,143	159	55
Obst Ch Bronchitis/Ac Exac	369	7.31	2,689	1	70
Chronic Nom Nos/Nec	309	1.95	39	289	11
Cor As-Native Vessel	294	6.85	589	208	62
Excessive Menstruation	282	4.59	894	87	42
Urinary Tract Infection Nos	264	6.04	1,207	64	38
Dental Caries	264	2.25	45	244	18
Total	4,469	4.08	12,971	1,293	48

#### Top 10 Principal Procedures

Principal Procedure	Total	Length of Stay	Bed Days	Day Cases	Average Age
Routine Chest X-Ray	1,572	5.42	8,508	3	41
EGD with Closed Biopsy	1,241	7.29	1,867	985	47
Electrocardiogram	961	5.02	4,828	0	62
Cystoscopy Nec	877	4.04	416	774	57
Colonoscopy	868	8.63	777	778	52
Intracapsular Lens Ext Nec	857	1.74	1,383	64	74
Cat Scan Head	768	7.62	5,826	3	56
Left Heart Cardiac Cath	679	7.83	1,167	530	60
Inject Ca Chemo Agent	577	11.14	245	555	60
Tonsillectomy	478	2.83	1,345	2	18
Total	8,878	5.09	26,362	3,694	53

\* Length of Stay relates to In-patients: day cases are excluded from calculation.

## Regional Maternity Hospital

### Activity

#### Geographical Distribution - In-Patient Mothers

Limerick County	Limerick City	Clare	Tipperary N.R	Tipperary S.R.	S.H.B.	Others	Total
1,135	1,135	1,166	324	83	98	11	3,952
28.72%	28.72%	29.50%	8.20%	2.10%	2.48%	0.28%	100.00%

#### Out-Patient Clinics

Specialty	Sessions	New	Return	Total
Anti-Natal	197	2,118	10,471	12,589
<b>Total</b>	<b>197</b>	<b>2,118</b>	<b>10,471</b>	<b>12,589</b>

#### Age Profile of Mothers

Age	Mothers	% of Total
14 – 15	6	0.15
16 – 17	52	1.32
18 – 21	434	10.98
22 – 25	517	13.08
26 – 29	868	21.96
30 – 34	1,291	32.67
35 – 39	648	16.40
40+	136	3.44
<b>Total</b>	<b>3,952</b>	<b>100.00</b>

Age of Youngest Mother	15.43
Age of Oldest Mother	45.95
Average Age of Mothers	29.92
Standard Deviation	5.9



## Regional Maternity Hospital

### Resources

#### Summary of Beds by Specialty 1998 and 1999

	1998	1999
Obstetrics	80	80
Neo-Natal	19	19
<b>Total</b>	<b>99</b>	<b>99</b>
Day Beds	4	4

#### Number of Staff (W.T.E.) 1998 and 1999

Number of Staff by Category	1998	1999
Medical	18.9	19.7
Nursing	139.4	145.1
Para Medical	2.6	3.0
Non-Nursing	39.9	41.0
Administrative	12.6	14.8
Others	0.2	0.3
<b>Total</b>	<b>213.6</b>	<b>223.9</b>

#### Expenditure (Provisional) 1998 and 1999

	1998 (£000)	1999 (£000)
Pay	5,933	6,767
Non Pay	1,363	1,519
<b>Total (Gross)</b>	<b>7,296</b>	<b>8,286</b>
Income	1,336	1,501
<b>Total (Nett)</b>	<b>5,960</b>	<b>6,785</b>

## Regional Orthopaedic Hospital

### Summary of Regional Orthopaedic Hospital 1998 & 1999

	1998	1999		1998	1999
<b>IN-PATIENT ACTIVITY</b>			<b>PHYSIOTHERAPY</b>		
Bed Complement	89	89	In-Patient Treatments		7,254
Available Bed Days	21,015	22,063	Out-Patient Treatments		2,387
Bed Days Used	16,688	14,454	<b>Total</b>		<b>9,641</b>
Percentage Occupancy	79%	66%			
Patients Treated	1,481	1,457	<b>OUT-PATIENTS</b>		
Average Stay	11.30	9.88	New	416	616
Day Cases	1,244	1,277	Review	4,263	4,209
			<b>Total</b>	<b>4,679</b>	<b>4,825</b>
<b>RADIOLOGY</b>					
Regular	13,844	12,371			
<b>Total</b>	<b>13,844</b>	<b>12,371</b>			
<b>X-RAY CATEGORIES</b>					
Other Routine	13,844	12,371			
<b>Total</b>	<b>13,844</b>	<b>12,371</b>			

Specialty	Bed Days Used				Average Stay	In-Patient Discharges			
Orthopaedics	8,952	5,502	0	14,454	9.88	852	605	0	1,457
<b>Total</b>	<b>8,952</b>	<b>5,502</b>	<b>0</b>	<b>14,454</b>	<b>9.88</b>	<b>852</b>	<b>605</b>	<b>0</b>	<b>1,457</b>

Specialty	Day Cases				Out-Patient Report				
	Public	Private	Non-Des	Total		A&E	OPD	Dialysis	
Orthopaedics	460	817	0	1,277	New		616		
<b>Total</b>	<b>460</b>	<b>817</b>	<b>0</b>	<b>1,277</b>	Return		4209		
	<b>In-Patient Admissions</b>				<b>Total</b>	<b>0</b>	<b>4,825</b>	<b>0</b>	
					<b>Number of Beds Available</b>				
A&E	0					Public	Private	Non-Des	Total
Other	602				7-Day	39	15		58
Elective	862				5-Day				
<b>Total</b>	<b>1,464</b>				Sub-Total	39	19		58
Day Cases	1,277				Day Beds	5	5		
					<b>Total</b>	<b>44</b>	<b>24</b>		<b>68</b>

## Regional Orthopaedic Hospital

### Activity

#### Geographical Distribution - In-Patient & Day Case

Limerick County	Limerick City	Clare	Tipperary N.R.	Tipperary S.R.	S.H.B.	Others	Total
876	725	692	326	26	55	34	2,734
32.04%	26.52%	25.31%	11.92%	0.95%	2.01%	1.24%	100.00%

#### Age Profile - In-Patient

Age	Admissions	% of Total	Bed Days	% of Total	Average Stay	*Ratio of Pats to Bed Days	Avg. Adm. Per Patient
Under 1	2	0.14	10	0.07	5.00	1:0.50	1.00
1 – 15	65	4.46	447	3.11	6.88	1:0.70	1.23
16 – 35	213	14.62	1,217	8.46	5.71	1:0.58	1.13
36 – 55	249	17.09	2,114	14.69	8.49	1:0.86	1.20
56 – 65	222	15.24	2,195	15.25	9.89	1:1.00	1.14
66 – 75	347	23.82	3,951	27.45	11.39	1:1.15	1.14
76 – 85	258	17.71	3,157	21.94	12.24	1:1.24	1.10
86+	101	6.93	1,300	9.03	12.87	1:1.30	1.05

\* This is calculated by dividing % Bed Days by % of Total Patients.

#### Out-Patient Clinics

Specialty	Sessions	New	Return	Total
Orthopaedics	233	616	4,209	4,825
<b>Total</b>	<b>233</b>	<b>616</b>	<b>4,209</b>	<b>4,825</b>

## Regional Orthopaedic Hospital

### Resources

#### Summary of Beds by Specialty 1998 and 1999

	1998	1999
Orthopaedics	89	89
Day Beds	10	10

#### Number of Staff (W.T.E.) 1998 and 1999

Number of Staff by Category	1998	1999
Medical	14.3	16.0
Nursing	69.3	65.7
Para Medical	7.1	6.5
Non-Nursing	41.8	42.1
Administrative	11.3	12.2
Others	0.3	0.3
<b>Total</b>	<b>144.1</b>	<b>142.8</b>

#### Expenditure (Provisional) 1998 and 1999

	1998 (£000)	1999 (£000)
Pay	4,116	4,423
Non Pay	1,657	1,638
<b>Total (Gross)</b>	<b>5,773</b>	<b>6,061</b>
Income	1,059	1,180
<b>Total (Nett)</b>	<b>4,714</b>	<b>4,881</b>

## Summary of Ennis General Hospital 1998 & 1999

	1998	1999		1998	1999
<b>IN-PATIENT ACTIVITY</b>			<b>PHYSIOTHERAPY</b>		
Bed Complement	88	88	In-Patient Treatments	4,714	3,699
Available Bed Days	31,460	31,560	Out-Patient Treatments	3,122	2,663
Bed Days Used	29,938	29,825	<b>Total</b>	<b>7,836</b>	<b>6,362</b>
Percentage Occupancy	95%	95%			
Patients Treated	4,474	4,650	<b>Accident &amp; Emergency</b>		
Average Stay	6.65	6.30	New Patients	15,642	15,597
Day Cases	1,765	1,638	Review Patients	3,792	3,258
			<b>Total</b>	<b>19,434</b>	<b>18,855</b>
<b>MEDICAL PROCEDURES</b>			<b>OUT-PATIENTS</b>		
ECG	164	230	New	3,713	3,279
			Review	8,408	8,048
			<b>Total</b>	<b>12,121</b>	<b>11,327</b>
<b>RADIOLOGY</b>			<b>Pathology Specimens</b>		
Regular	18,235	18,513	Blood Bank	1,810	2,044
On-Call	8,074	8,777	Blood Bank On-Call	436	471
<b>Total</b>	<b>26,309</b>	<b>27,290</b>	<b>Total</b>	<b>2,246</b>	<b>2,515</b>
<b>X-RAY CATEGORIES</b>			Bacteriology	8,581	9,187
CXR	7,645	7,984	Bacteriology On-Call	75	68
SXR	1,397	1,551	<b>Total</b>	<b>8,656</b>	<b>9,255</b>
Spine	2,198	2,357	Biochemistry	32,020	31,655
Abdomen	1,265	1,673	Biochemistry On-Call	4,545	4,088
Other Routine	8,588	9,114	<b>Total</b>	<b>36,565</b>	<b>35,743</b>
Ultrasound	3,426	3,109	Haematology	33,606	35,462
Mammograms	687	557	Haematology On-Call	3,421	3,622
Barium Meal	234	246	<b>Total</b>	<b>37,027</b>	<b>39,084</b>
Barium Enemas	145	139	<b>All Specimens</b>		
IVP	166	166	Normal	76,017	78,348
MCG	3	1	On-Call	8,477	8,249
Chole	12	14	<b>Total</b>	<b>84,494</b>	<b>86,597</b>
OP Chole	1		<b>Specimens Referred</b>		
T Tube	5	2	Limerick Regional	21,477	22,483
Myelogram		5	UCD & Dublin Hospitals		
Venogram	158	163	UCG	234	249
Angio Aortogram		1	Other Laboratories		
Tomos	169	175	<b>Total</b>	<b>21,711</b>	<b>22,732</b>
Others	210	33			
<b>Total</b>	<b>26,309</b>	<b>27,290</b>			

## Ennis General Hospital

### Activity by Specialty

Specialty	Bed Days Used (excl. Day Cases)				Average Stay	In-Patient Discharges (excl. Day Cases)			
	Public	Private	Non-Des	Total		Public	Private	Non-Des	Total
Dental	2	1		3	1.00	2	1		3
General Medicine	9,974	2,564	1,333	13,871	6.15	1,679	454	115	2,248
General Surgery	7,461	1,896	545	9,902	5.42	1,309	396	31	1,736
Geriatrics	5,080	830	138	6,048	9.16	561	94	7	662
Gynaecology		1		1	1.00		1		1
<b>Total</b>	<b>22,517</b>	<b>5,292</b>	<b>2,016</b>	<b>29,825</b>	<b>6.30</b>	<b>3,551</b>	<b>946</b>	<b>153</b>	<b>4,650</b>

Specialty	Day Cases				Out-Patient Report				
	Public	Private	Non-Des	Total	New Return Total	A&E	OPD	Dialysis	
Dental	190	190				15,597	3,279		
General Medicine	16		1	17		3,258	8,048		
General Surgery	563	725		1,288		18,855	11,327	0	
Gynaecology	38	21		59	Number of Beds Available				
Urology	73	8		81	Public Private Non-Des Total				
<b>Total</b>	<b>881</b>	<b>756</b>	<b>1</b>	<b>1,638</b>	7-Day	66	16 6		88
<b>In-Patient Admissions</b>					5-Day				
					Sub-Total	66	16 6		88
A&E				4,198	Day Beds	4	2		
Other				0	<b>Total</b>	<b>70</b>	<b>18 6</b>		<b>94</b>
Elective				446					
<b>Total</b>				<b>4,644</b>					
Day Cases				1,638					

## Ennis General Hospital

### Activity

#### Geographical Distribution / In-Patient & Day Case

Clare	Limerick County	Limerick City	Tipperary N.R.	Tipperary S.R.	S.H.B.	Others	Total
6,109	11	13	2	2	17	134	6,288
97.15%	0.17%	0.21%	0.03%	0.03%	0.27%	2.13%	100.00%

#### Age Profile - In-Patient

Age	Admissions Total	% of Days	Bed Total	% of	Average Stay	*Ratio of Pats to Bed Days	Avg.Adm
Under 1	3	0.06	9	0.03	3.00	1:0.50	1.00
1 – 15	239	5.14	622	2.14	2.60	1:0.42	1.06
16 – 35	874	18.80	2,605	8.96	2.98	1:0.48	1.10
36 – 55	853	18.34	4,167	14.33	4.89	1:0.78	1.25
56 – 65	491	10.56	3,663	12.60	7.46	1:1.19	1.26
66 – 75	925	19.89	6,960	23.94	7.52	1:1.20	1.38
76 – 85	986	21.20	8,677	29.85	8.80	1:1.41	1.39
86+	279	6.00	2,366	8.14	8.48	1:1.36	1.33

\* This is calculated by dividing % Bed Days by % of Total Patients.

#### Out-Patient Clinics

Specialty	Sessions	New	Return	Total
Ante-Natal	47	405	2,104	2,509
E.N.T.	43	397	635	1,032
Geriatrics	27	0	221	221
Gynaecology	41	248	470	718
Medicine	117	322	1,045	1,367
Orthopaedics	12	73	146	219
Paediatrics	53	151	534	685
Surgery	267	1,539	2,421	3,960
Urology	36	144	472	616
<b>Total</b>	<b>643</b>	<b>3,279</b>	<b>8,048</b>	<b>11,327</b>

## Ennis General Hospital

### Resources

#### Summary of Beds by Specialty 1998 and 1999

	1998	1999
General Surgery	26	26
General Medicine	52	52
Geriatric Medicine	10	10
<b>Total</b>	<b>88</b>	<b>88</b>
Day Beds	6	6

#### Number of Staff (W.T.E.) 1998 and 1999

Number of Staff by Category	1998	1999
Medical	22.6	23.1
Nursing	99.1	103.1
Para Medical	15.9	15.7
Non-Nursing	53.1	50.8
Administrative	22.5	25.7
Others	0.1	0.2
<b>Total</b>	<b>213.3</b>	<b>218.6</b>

#### Expenditure (Provisional) 1998 and 1999

	1998 (£000)	1999 (£000)
Pay	6,631	7,329
Non Pay	1,746	1,851
<b>Total (Gross)</b>	<b>8,377</b>	<b>9,180</b>
Income	912	1,032
<b>Total (Nett)</b>	<b>7,465</b>	<b>8,148</b>



## Summary of Nenagh General Hospital 1998 & 1999

	1998	1999		1998	1999
<b>IN-PATIENT ACTIVITY</b>			<b>Accident &amp; Emergency</b>		
Bed Complement	68	68	New Patients	7,201	7,035
Available Bed Days	24,820	23,360	Review Patients	3,719	3,749
Bed Days Used	25,183	24,104	<b>Total</b>	<b>10,920</b>	<b>10,784</b>
Percentage Occupancy	101%	103%	<b>OUT-PATIENTS</b>		
Patients Treated	4,159	4,432	New	3,358	2,935
Average Stay	6.09	5.49	Review	6,932	6,525
Day Cases	1,718	1,621	<b>Total</b>	<b>10,290</b>	<b>9,460</b>
<b>RADIOLOGY</b>			<b>Pathology Specimens</b>		
Regular	14,295	14,636	Blood Bank	521	607
On-Call	4,528	4,574	Blood Bank On-Call	290	352
<b>Total</b>	<b>18,823</b>	<b>19,210</b>	<b>Total</b>	<b>811</b>	<b>959</b>
<b>X-RAY CATEGORIES</b>			Bacteriology	10,250	10,201
CXR	6,269	6,424	Bacteriology On-Call	112	81
SXR	527	512	<b>Total</b>	<b>10,362</b>	<b>10,282</b>
Spine	1,906	1,689	Biochemistry	21,500	23,725
Abdomen	1,019	1,160	Biochemistry On-Call	4,002	4,815
Other Routine	6,974	7,342	<b>Total</b>	<b>25,502</b>	<b>28,540</b>
Ultrasound	1,322	1,271	Haematology	26,823	34,698
Mammograms	302	324	Haematology On-Call	4,613	5,939
Barium Meal	72	71	<b>Total</b>	<b>31,436</b>	<b>40,637</b>
Barium Enemas	165	155	<b>All Specimens</b>		
IVP	175	169	Normal	59,094	69,231
MCG	3	1	On-Call	9,017	11,187
Chole	3	11	<b>Total</b>	<b>68,111</b>	<b>80,418</b>
OP Chole	6	4	<b>Specimens Referred</b>		
T Tube	2	4	Limerick Regional	15,186	18,605
Venogram	53	60	Other Laboratories	28	15
Tomos	2	3	<b>Total</b>	<b>15,214</b>	<b>18,620</b>
Others	23	10			
<b>Total</b>	<b>18,823</b>	<b>19,210</b>			

## Nenagh General Hospital

### Activity by Specialty

Specialty	Bed Days Used				Average Stay	In-Patient Discharges			
						Public	Private	Non-Des	Total
General Medicine	10,948	2,271	1,098	14,317	5.45	2,088	442	111	2,641
General Surgery	8,015	1,532	11	9,558	5.53	1,454	298	3	1,755
Geriatrics	120	13	0	133	6.75	18	2	0	20
Urology	58	38	0	96	6.14	11	5	0	16
<b>Total</b>	<b>19,141</b>	<b>3,854</b>	<b>1,109</b>	<b>24,104</b>	<b>5.49</b>	<b>3,571</b>	<b>747</b>	<b>114</b>	<b>4,432</b>

Out-Patient Report				
	A&E	OPD	Dialysis	
New	7,035	2,935		
Return	3,749	6,525		
<b>Total</b>	<b>10,784</b>	<b>9,460</b>	<b>0</b>	
Number of Beds Available				
	Public	Private	Non-Des	Total
7-Day	42	14		68
5-Day				
Sub-Total	42	14		68
Day Beds	3	3		6
<b>Total</b>	<b>45</b>	<b>17</b>		<b>74</b>

## Nenagh General Hospital

### Resources

#### Summary of Beds by Specialty 1998 and 1999

	1998	1999
General Surgery	24	24
General Medicine	36	36
Geriatric Medicine	8	8
<b>Total</b>	<b>68</b>	<b>68</b>
Day Beds	6	6

#### Number of Staff (W.T.E.) 1998 and 1999

Number of Staff by Category	1998	1999
Medical	20.6	22.6
Nursing	86.4	88.3
Para Medical	15.0	15.5
Non-Nursing	38.7	39.5
Administrative	17.6	18.1
Others	0.3	0.5
<b>Total</b>	<b>178.6</b>	<b>184.5</b>

#### Expenditure (Provisional) 1998 and 1999

	1998 (£000)	1999 (£000)
Pay	5,615	6,240
Non Pay	1,648	1,924
Total (Gross)	7,263	8,164
Income	884	978
<b>Total (Nett)</b>	<b>6,379</b>	<b>7,186</b>

## Activity / Nenagh General Hospital

### Geographical Distribution - In-Patient & Day Case

Tipperary N.R.	Tipperary S.R.	Clare	Limerick County	Limerick City	S.H.B.	Others	Total
5,724	12	64	48	24	6	175	6,053
94.56%	0.20%	1.06%	0.79%	0.40%	0.10%	2.89%	100.00%

### Age Profile - In-Patient

Age	Admissions	% of Total	Bed Days	% of Total	Average Stay	*Ratio of Pats To Bed Days	Avg. Adm.
Under 1	5	0.11	11	0.05	2.20	1:0.45	1.00
1 – 15	210	4.74	489	2.06	2.33	1:0.43	1.08
16 – 35	874	19.72	2,057	8.65	2.36	1:0.44	1.16
36 – 55	878	19.81	3,722	15.65	4.24	1:0.79	1.31
56 – 65	554	12.50	2,991	12.58	5.40	1:1.01	1.40
66 – 75	863	19.47	6,286	26.43	7.29	1:1.36	1.48
76 – 85	837	18.89	6,689	28.13	7.99	1:1.49	1.49
86+	211	4.76	1,537	6.46	7.28	1:1.36	1.46

\* This is calculated by dividing % Bed Days by % of Total Patients.

### Out-Patient Clinics

Specialty	Sessions	New	Return	Total
Ante-Natal	25	0	379	379
Elderly Care	20	51	48	99
E.N.T.	49	651	764	1,415
Gynaecology	43	128	218	346
Medicine	119	441	1,421	1,862
Ophthalmology	33	217	323	540
Orthopaedics	21	137	215	352
Paediatrics	51	133	457	590
Surgery	136	920	1,833	2,753
Urology	45	257	867	1,124
<b>Total</b>	<b>542</b>	<b>2,935</b>	<b>6,525</b>	<b>9,460</b>

## Orthodontic Services

### Summary of Orthodontic Activity

	1998	1999
Number of Completed Treatments	532	653
Number of Cases Commenced	543	554
Number of Active Treatments	2,508	2,039
Number of Cases Being Monitored	1,470	1,798

### Orthodontic Waiting List

	1998	1999
Number Waiting for Treatment	920	1,341
Number Waiting for Assessment	2,513	2,388

### Number of Staff (W.T.E.) by Category

	1999
Medical	6.4
Administrative	8.3
<b>Total</b>	<b>14.7</b>

## Acute Hospital Services



**BÓRD SLÁINTE**  
AN MHEÁN-IARTHAIR

Mid-Western Health Board

31/33 Catherine Street, Limerick

Tel: 061 483331

Fax: 061 483211

Website: [www.mwhb.ie](http://www.mwhb.ie)

## Acute Hospital Services



**BÓRD SLÁINTE**  
AN MHEÁN-IARTHAIR

Mid-Western Health Board

31/33 Catherine Street, Limerick

Tel: 061 483331

Fax: 061 483211

Website: [www.mwhb.ie](http://www.mwhb.ie)