

SECTION VIII.

CONCLUSION.

Forty-seven ordinary meetings and seven special meetings of the Commission were held during the year 1938. The following table shows the attendances at these meetings :—

NAME	Ordinary Meetings	Special Meetings
Mr. M. W. Doran, Chairman ...	43	7
Mr. E. Kelly	37	—
Mr. M. Kilroy	40	—
Dr. J. A. Madden	41	7
Dr. S. Ó Ceallaigh	38	7
Mr. L. O'Doherty	39	6

In conclusion, the Commission desires to repeat the tribute which it has paid in previous Reports to the valuable services of its able Secretary, Dr. A. F. Cooney, and staff in the presentation of the Commission's views on hospital problems and in the compilation of the illustrative data.

MICHAEL W DORAN, Chairman
 EDWARD KELLY.
 MICHAEL KILROY.
 JOHN A. MADDEN.
 SEAMUS Ó CEALLAIGH.
 LIAM O'DOHERTY.

Iúl 26, 1939.

A. F. COONEY, Rúnaidhe.

SECTION VII

CONTINUATION

The following table shows the attendance at the meetings of the Commission during the year 1932. The following table shows the attendance at these meetings:

Name	Ordinary Meetings	Special Meetings
Mr. W. F. Brown	42	7
Mr. E. V. ...	37	—
Mr. M. ...	40	—
Mr. M. ...	41	7
Mr. J. A. ...	38	7
Mr. S. ...	39	0
Mr. L. O. ...	39	—

The following table shows the attendance at the meetings of the Commission during the year 1932. The following table shows the attendance at these meetings:

- MR. W. F. BROWN
- MR. E. V. ...
- MR. M. ...
- MR. M. ...
- MR. J. A. ...
- MR. S. ...
- MR. L. O. ...

IN 1932

A. S. DOOLEY, Director

Review of Hospital Statistics
1911-1912

It is important to note that this
PART II.
review is restricted to those
voluntary hospitals which
submitted the required statistical
returns in a comparable form for
each of the years reviewed.

Review of Hospital Statistics
1933—1938

It is important to note that this review is restricted to those voluntary hospitals which submitted the required statistical returns in a comparable form for each of the years reviewed.

REVIEW OF HOSPITAL STATISTICS.

1933-1938.

In the Commission's Third General Report summarised comparisons were tabulated and graphed in respect of certain voluntary hospitals which had submitted statistical returns for the years 1933 to 1936. These comparisons are now extended to include the statistical returns for the years 1937 and 1938.

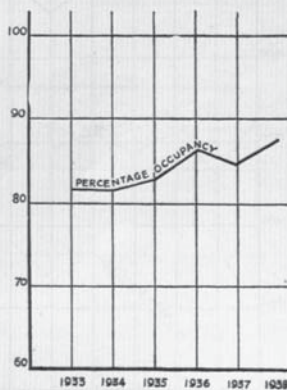
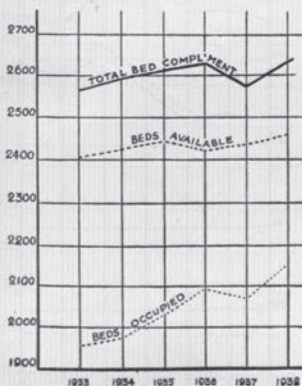
BED RETURNS.

GENERAL HOSPITALS.

Comparative statistics are available for the six years under review in respect of the beds in 25 voluntary General Hospitals. The trends of the figures of total bed complement, average daily availability and average daily occupancy are shown in the following table and illustrated in the accompanying graph :-

ITEM	1933	1934	1935	1936	1937	1938	Increase or Decrease since 1933
Total bed complement ...	2567	2597	2616	2629	2589	2633	+ 66
Average No. of beds available daily	2405.1	2422.5	2443.5	2421.0	2438.2	2460.0	+ 34.9
Average No. of beds occupied daily	1955.5	1978.8	2025.0	2093.5	2068.7	2155.2	+ 199.7
Percentage occupancy (percentage calculated on beds available) ...	81.3%	81.7%	82.9%	86.5%	84.8%	87.6%	+ 6.3
Percentage of beds closed, i.e., not available (percentage calculated on total bed complement) ...	6.3%	6.7%	6.6%	7.9%	5.8%	6.6%	+ 0.3

GRAPH No. I. 25 GENERAL HOSPITALS



From the above table it will be noted that the total bed complement of 23 General Hospitals showed an increase of 66 beds since 1933, the average number of beds available daily an increase of 34.9 and the average number of beds occupied daily an increase of 119.7. There was an increase of 6.3 in percentage occupancy in the period.

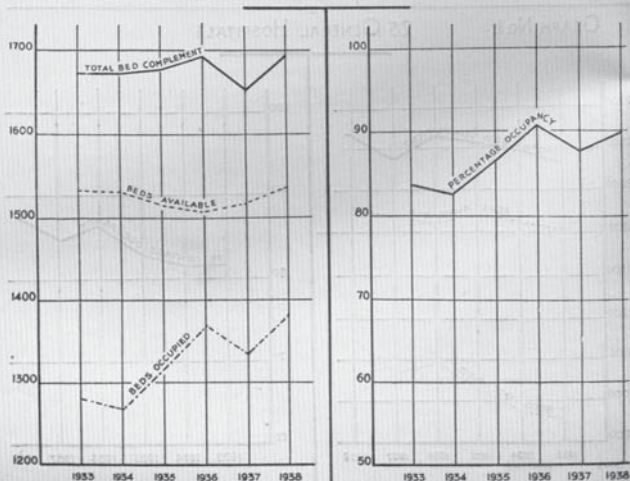
DUBLIN CITY GENERAL HOSPITALS.

Comparative statistics are available for the six years under review in respect of the beds in 9 voluntary General Hospitals in Dublin City. The trends of the figures of total bed complement, average daily availability and average daily occupancy are shown in the following table and illustrated in the accompanying graph :—

ITEM	1933	1934	1935	1936	1937	1938	Increase or Decrease since 1933
Total bed complement ...	1672	1672	1678	1692	1652	1695	+23
Average No. of beds available daily	1532.1	1531.6	1515.2	1509.2	1515.6	1535	+2.9
Average No. of beds occupied daily	1281.7	1269.9	1311.2	1369.5	1333.0	1380.2	+98.5
Percentage occupancy (percentage calculated on beds available) ...	83.7%	82.9%	86.5%	90.7%	87.9%	89.9%	+6.2
Percentage of beds closed, <i>i.e.</i> , not available (percentage calculated on total bed complement) ...	8.4%	8.4%	9.7%	10.8%	8.2%	9.7%	+1.3

GRAPH No.2.

9 DUBLIN GENERAL HOSPITALS



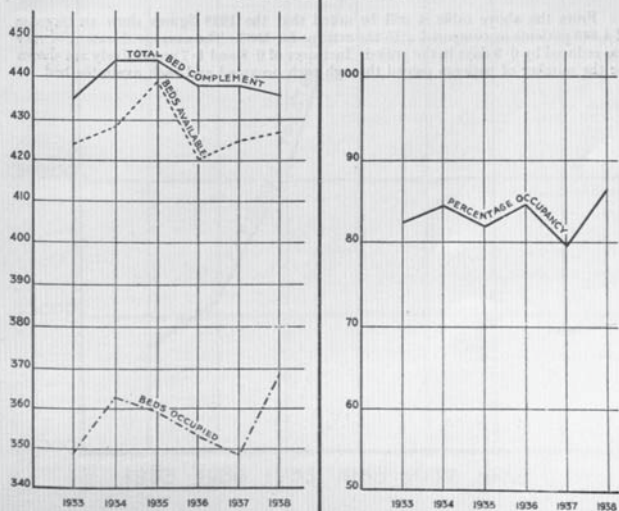
From the above table it will be noted that the total bed complement of 9 General Hospitals in Dublin City showed an increase of 23 beds since 1933, the average number of beds available daily an increase of 2.9 and the average number of beds occupied daily an increase of 98.5. There was an increase of 6.2 in percentage occupancy in the period.

CORK GENERAL HOSPITALS.

Comparative statistics are available for the six years under review in respect of the beds in 4 General Hospitals in Cork. The trends of the figures of total bed complement, average daily availability and average daily occupancy are shown in the following table and illustrated in the accompanying graph :-

ITEM	1933	1934	1935	1936	1937	1938	Increase or Decrease since 1933
Total bed complement ...	435	444	444	438	438	436	+ 1
Average No. of beds available daily	424.0	428.0	439.0	420.1	425.6	427.1	+ 3.1
Average No. of beds occupied daily	349.6	361.4	359.9	353.1	339.3	368.6	+19.0
Percentage occupancy (calculated on beds available) ...	82.5%	84.4%	82.0%	84.5%	79.7%	86.3%	+ 3.8
Percentage of beds closed, <i>i.e.</i> , not available (calculated on total bed complement) ...	2.3%	3.6%	0.1%	4.1%	2.8%	2.0%	- 0.3

GRAPH NO.3. 4 CORK GENERAL HOSPITALS



From the above table it will be noted that the total bed complement of 4 General Hospitals in Cork showed an increase of one bed since 1933, the average number of beds available daily an increase of 3.1 and the average number of beds occupied daily an increase of 19. There was an increase of 3.8 in percentage occupancy in the period.

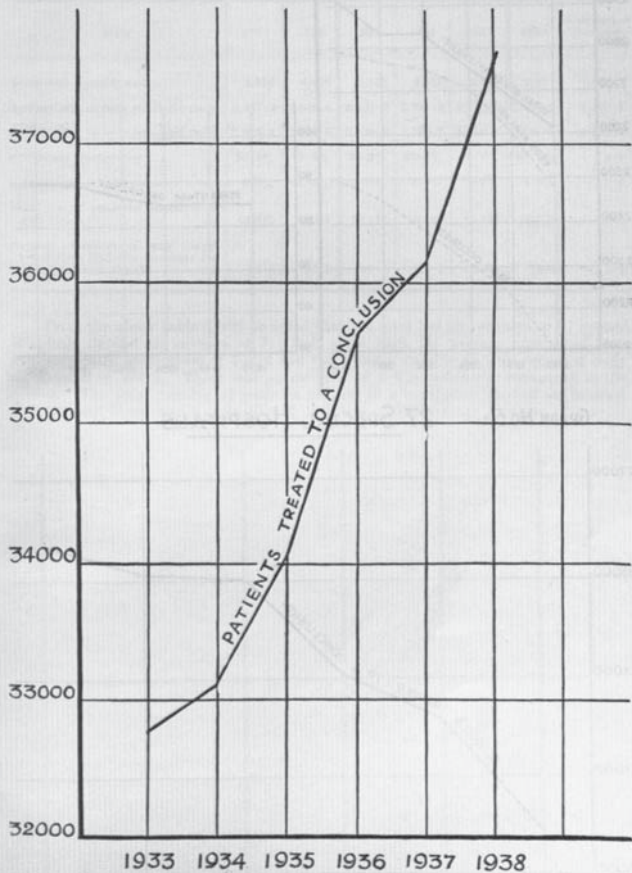
IN-PATIENTS TREATED AND AVERAGE DURATION OF STAY.

The total number of in-patients "treated to a conclusion" in the 25 General Hospitals for the years 1933 to 1938 is shown in the following table and the upward trend for the period is illustrated in the accompanying graph. The table also gives figures of the average duration of stay of patients as well as of the number of patients passed through each occupied and available bed :—

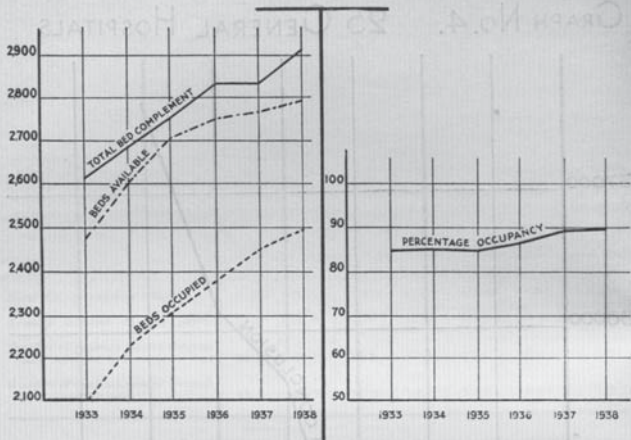
ITEM	1933	1934	1935	1936	1937	1938	Increase or Decrease since 1933
Total No. of patients treated ...	32,796	33,114	34,074	35,617	36,182	37,045	+ 4,849
Average duration of stay (days)	21.8	21.8	21.6	21.4	20.8	20.9	— 0.9
Number of patients passed through each occupied bed ...	16.7	16.7	16.8	17.0	17.5	17.5	+ 0.8
Number of patients passed through each available bed ...	13.6	13.7	13.9	14.7	14.9	15.3	+ 1.7

From the above table it will be noted that the 1938 figures show an increase of 4,849 patients as compared with the returns for 1933. The average duration of stay was reduced by 0.9 days in the period. Increases of 0.8 and 1.7 respectively are shown for the number of patients passed through each occupied and each available bed.

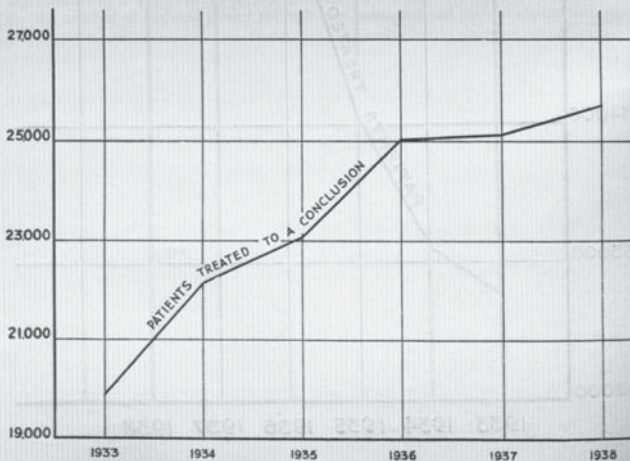
GRAPH No. 4. 25 GENERAL HOSPITALS



GRAPH No.5. 27 SPECIAL HOSPITALS



GRAPH No.5A. 27 SPECIAL HOSPITALS



SPECIAL HOSPITALS.

Comparative bed statistics are available in respect of 27 Special Hospitals for the six years, 1933 to 1938 inclusive, and are summarised in the following table and illustrated in the accompanying graphs :—

ITEM	1933	1934	1935	1936	1937	1938	Increase or Decrease since 1933
Total bed complement ...	2,616	2,686	2,751	2,828	2,833	2,917	+301
Average No. of beds available daily	2,487.2	2,608.4	2,701.0	2,746.9	2,752.8	2,790.6	+303.4
Average No. of beds occupied daily	2,099.4	2,226.5	2,303.6	2,380.7	2,454.8	2,490.7	+391.3
Percentage occupancy ...	84.5%	85.4%	85.3%	86.6%	89.1%	89.3%	+ 4.8
Percentage of beds closed ...	4.9%	2.8%	1.8%	2.9%	2.8%	4.3%	— 0.6
Total No. of patients treated to a conclusion ...	19,825	22,041	23,176	25,109	25,182	25,778	+ 5,953
Average duration of stay (days) (excluding Catholic Institute for the Deaf and Dumb) ...	32.0	31.1	31.0	29.7	30.5	30.4	— 1.6

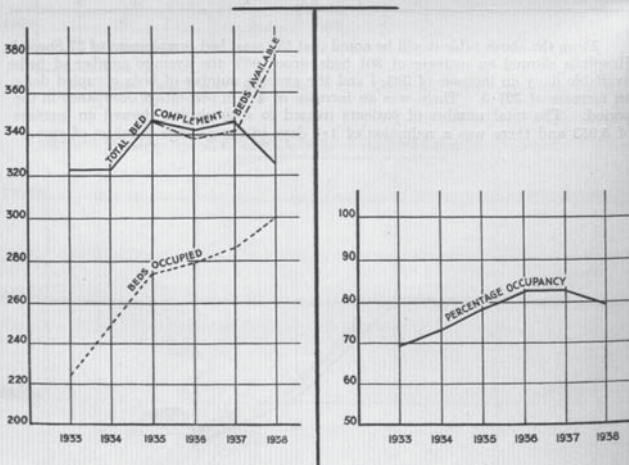
From the above table it will be noted that the total bed complement of 27 Special Hospitals showed an increase of 301 beds since 1933, the average number of beds available daily an increase of 303.4 and the average number of beds occupied daily an increase of 391.3. There was an increase of 4.6 in percentage occupancy in the period. The total number of patients treated to a conclusion showed an increase of 5,953 and there was a reduction of 1.6 days in the average duration of stay.

SIX MATERNITY HOSPITALS.

The following table gives the returns of beds, percentage occupancy, etc., in six Maternity Hospitals for the six years 1933 to 1938 (inclusive) and the trends of the figures are illustrated in the accompanying graph :—

ITEM	1933	1934	1935	1936	1937	1938	Increase or Decrease since 1933
Total bed complement ...	324	324	347	342	355	427	+ 103
Average No. of beds available daily	324.0	324.0	347.0	335.2	342.5	377.4	+ 53.4
Average No. of beds occupied daily	224.2	239.3	273.8	279.9	285.2	300.6	+ 76.4
Percentage occupancy ...	69.0%	73.9%	78.9%	83.5%	83.5%	79.7%	+ 10.7
Total No. of patients treated to a conclusion ...	8,051	8,840	9,731	10,095	10,419	10,896	+ 2,845
Average duration of stay (days)	10.2	9.9	10.3	10.2	9.9	10.1	- 0.1

GRAPH No.6. 6 MATERNITY HOSPITALS



From this table it will be noted that the total bed complement of 6 maternity hospitals showed an increase of 103 beds since 1933, the average number of beds available daily an increase of 53.4 and the average number of beds occupied daily an increase of 76.4. There was an increase of 10.7 in percentage occupancy in the period. The total number of patients treated to a conclusion showed an increase of 2,845 and there was a reduction of 0.1 days in the average duration of stay.

THREE CHILDREN'S HOSPITALS.

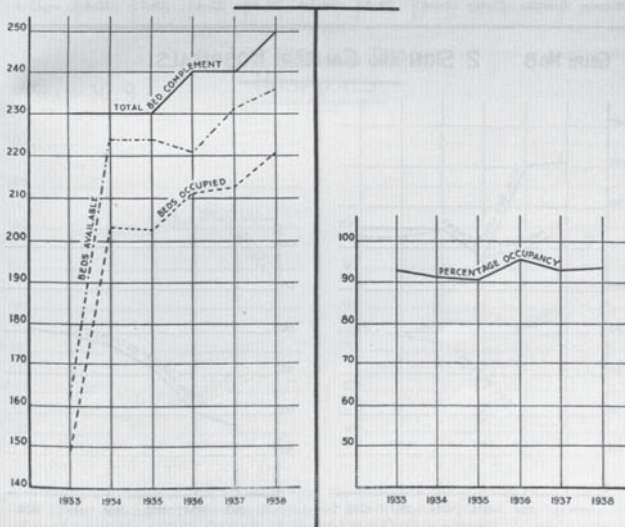
The following table gives the returns of beds, percentage occupancy, etc., in three Children's Hospitals for the six years 1933 to 1938 inclusive, and the trends of the figures are illustrated in the accompanying graph :—

ITEM	1933	1934	1935	1936	1937	1938	Increase or Decrease since 1933
Total bed complement ...	230	230	230	240	240	260	+ 30
Average No. of beds available daily	162.0*	224.0	224.0	221.4	231.4	236.4	+ 74.4
Average No. of beds occupied daily	149.5	203.9	203.5	211.1	213.6	220.5	+ 71.0
Percentage occupancy ...	92.3%	91.0%	90.8%	95.3%	92.3%	93.2%	+ 0.9
Total No. of patients treated to a conclusion ...	2,527	3,393	3,233	3,600	3,861	4,133	+ 1,606
Average duration of stay (days)	21.6	21.9	23.0	21.4	20.2	19.5	- 2.1

* One hospital closed in 1933 for reconstruction.

GRAPH NO.7.

3 CHILDREN'S HOSPITALS



From this table it will be noted that the total bed complement of 3 Children's Hospitals showed an increase of 30 beds since 1933, the average number of beds

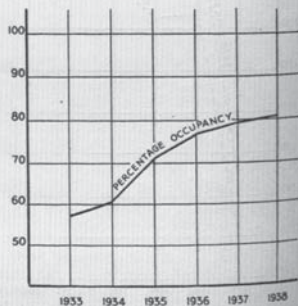
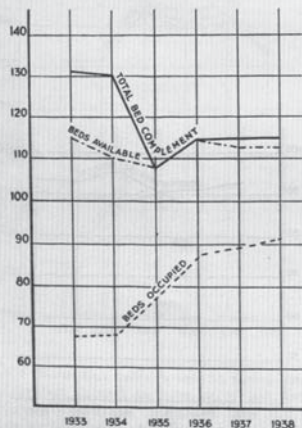
available daily an increase of 74.4 and the average number of beds occupied daily an increase of 71. There was an increase in percentage occupancy of 0.9 in the period. The total number of patients treated to a conclusion showed an increase of 1,606 and there was a reduction of 2.1 days in the average duration of stay.

TWO SKIN AND CANCER HOSPITALS.

The following table gives the returns of beds, percentage occupancy, etc., in 2 Skin and Cancer Hospitals for the six years 1933 to 1938 inclusive, and the trends of the figures are illustrated in the accompanying graph :—

ITEM	1933	1934	1935	1936	1937	1938	Increase or Decrease since 1933
Total bed complement	131	130	108	115	115	115	- 16
Average No. of beds available daily	115.0	110.0	108.0	114.0	113.0	112.7	- 2.3
Average No. of beds occupied daily	66.2	66.3	77.4	87.6	89.4	90.5	+ 24.3
Percentage occupancy	57.6%	60.3%	71.7%	76.8%	79.0%	80.3%	+ 22.7
Total No. of patients treated to a conclusion	611	804	1,089	1,430	1,499	1,476	+ 865
Average duration of stay (days)	39.5	30.1	25.9	22.4	24.2	22.4	- 17.1

GRAPH No.8. 2 SKIN AND CANCER HOSPITALS



From this table it will be noted that the total bed complement of 2 Skin and Cancer Hospitals showed a decrease of 16 beds since 1933, the average number of

beds available daily a decrease of 2.3, and the average number of beds occupied daily an increase of 24.3. There was an increase of 22.7 in percentage occupancy in the period. The total number of patients treated to a conclusion showed an increase of 865, and there was a reduction of 17.1 days in the average duration of stay.

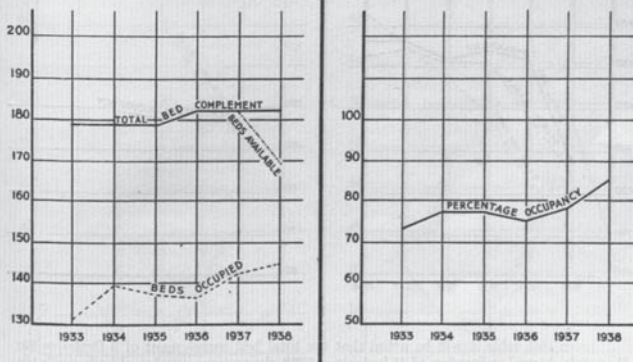
TWO EYE, EAR AND THROAT HOSPITALS.

The following table gives the returns of beds percentage occupancy, etc., in 2 Eye, Ear and Throat Hospitals for the six years 1933 to 1938 inclusive, and the trends of the figures are illustrated in the accompanying graph :—

ITEM	1933	1934	1935	1936	1937	1938	Increase or Decrease since 1933
Total bed complement	179	179	179	182	182	182	+ 3
Average No. of beds available daily	179.0	179.0	179.0	182.0	182.0	169.0	- 10
Average No. of beds occupied daily	131.5	138.8	137.9	136.7	142.0	144.1	+ 12.6
Percentage occupancy	73.5%	77.5%	77.0%	75.1%	78.0%	85.3%	+ 11.8
Total No. of patients treated to a conclusion	3,841	3,853	3,834	3,878	4,030	3,946	+ 105
Average duration of stay (days)	12.5	13.1	13.1	12.9	12.8	13.3	+ 0.8

2 EYE, EAR AND THROAT HOSPITALS

GRAPH No. 9.



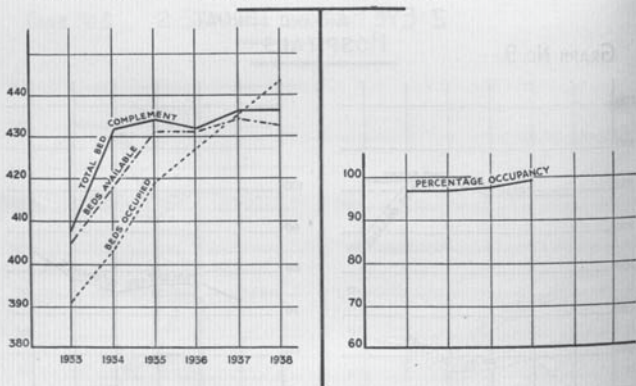
From this table it will be noted that the total bed complement of 2 Eye, Ear and Throat Hospitals showed an increase of 3 beds since 1933, the average number of beds available daily a decrease of 10, and the average number of beds occupied daily an increase of 12.6. There was an increase of 11.8 in the percentage occupancy in the period. The total number of patients treated to a conclusion showed an increase of 105 and there was an increase of 0.8 days in the average duration of stay.

THREE ORTHOPAEDIC HOSPITALS.

The following table gives the returns of beds, percentage occupancy, etc., in 3 Orthopaedic Hospitals for the six years 1933 to 1938 inclusive, and the trends of the figures are illustrated in the accompanying graph :—

ITEM	1933	1934	1935	1936	1937	1938	Increase or Decrease since 1933
Total bed complement ...	408	431	434	432	436	436	+ 28
Average No. of beds available daily	405.2	418.0	431.0	431.0	434.0	433.0	+ 27.8
Average No. of beds occupied daily	390.5	403.0	419.9	427.6	435.5	442.9	+ 52.4
Percentage occupancy ...	96.4%	96.4%	97.4%	99.2%	100.3%	102.3%	+ 5.9
Total No. of patients treated to a conclusion ...	580	518	544	514	515	502	- 78
Average duration of stay (days)	245.7	284.0	281.7	303.6	308.6	322.2	+ 76.5

GRAPH No.10. 3 ORTHOPAEDIC HOSPITALS



From this table it will be noted that the total bed complement of 3 Orthopaedic Hospitals showed an increase of 28 beds since 1933, the average complement number of beds available daily an increase of 27.8 and the average number of beds occupied daily an increase of 52.4. There was an increase of 5.9 in percentage occupancy in the period. The total number of patients treated to a conclusion showed a decrease of 78, and there was an increase of 76.5 days in the average duration of stay.

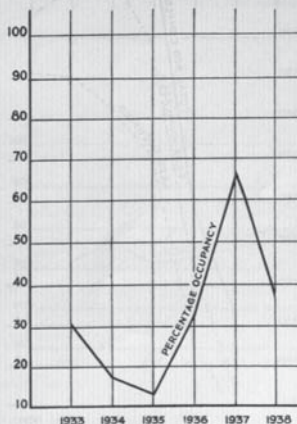
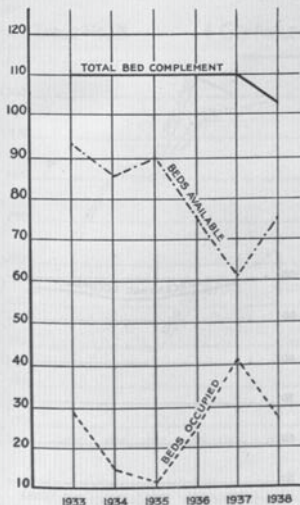
ONE FEVER HOSPITAL.

The following table gives the returns of beds, percentage occupancy, etc., in one Fever Hospital for the six years 1933 to 1938 inclusive, and the trends of the figures are illustrated in the accompanying graph :-

ITEM	1933	1934	1935	1936	1937	1938	Increase or Decrease since 1933
Total bed complement	110	110	110	110	110	102	- 8
Average No. of beds available daily	92.5	86.0	90.0	74.3	61.4	74.5	- 18
Average No. of beds occupied daily	28.4	14.7	11.6	25.1	40.6	27.5	- 0.9
Percentage occupancy	30.7%	17.0%	12.8%	33.0%	66.1%	36.9%	+ 6.2
Total No. of patients treated to a conclusion	304	243	181	313	457	300	+ 2
Average duration of stay (days)	36.8	25.5	51.6	38.4	52.8	32.8	- 4

GRAPH No. II.

1 FEVER HOSPITAL



From this table it will be noted that the total bed complement of one Fever Hospital showed a decrease of 8 beds since 1933, the average number of beds available daily showed a decrease of 18 and the average number of beds occupied daily a decrease of 0.9. There was an increase of 6.2 in percentage occupancy in the period. The total number of patients treated to a conclusion showed an increase of 2 and there was a decrease of 4 days in the average duration of stay.

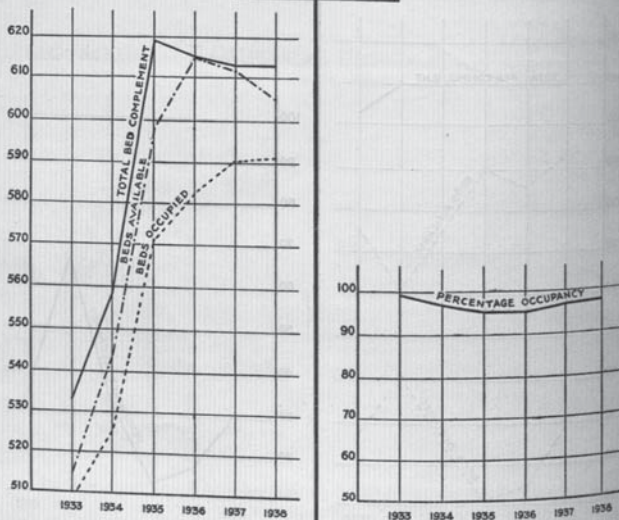
FOUR TUBERCULOSIS HOSPITALS.

The following table gives the returns of beds, percentage occupancy, etc., in 4 Tuberculosis Hospitals for the six years 1933 to 1938 inclusive, and the trends of the figures are illustrated in the accompanying graph:—

ITEM	1933	1934	1935	1936	1937	1938	Increase or Decrease since 1933
Total bed complement	533	558	619	615	613	613	+ 80
Average No. of beds available daily	515.0	543.4	598.0	615.0	612.0	605.6	+ 90.6
Average No. of beds occupied daily	508.8	525.0	570.3	582.4	590.2	591.5	+ 82.7
Percentage occupancy	98.8%	96.6%	95.4%	94.7%	96.4%	97.7%	- 1.1
Total No. of patients treated to a conclusion	946	940	954	1,074	1,076	974	+ 28
Average duration of stay (days)	196.3	203.9	223.4	197.9	200.1	221.7	+ 25.4

GRAPH No.12.

4 TUBERCULOSIS HOSPITALS



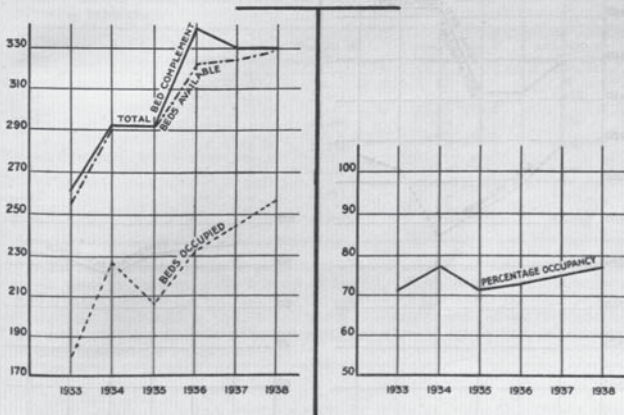
From this table it will be noted that the total bed complement of 4 Tuberculosis Hospitals showed an increase of 80 beds since 1933, the average number of beds available daily an increase of 90.6 and the average number of beds occupied daily an increase of 82.7. There was a decrease of 1.1 in percentage occupancy in the period. The total number of patients treated to a conclusion showed an increase of 28 and there was an increase of 25.4 days in the average duration of stay.

FOUR CONVALESCENT HOMES.

The following table gives the returns of beds, percentage occupancy, etc., in 4 Convalescent Homes for the six years 1933 to 1938 inclusive, and the trends of the figures are illustrated in the accompanying graph :-

ITEM	1933	1934	1935	1936	1937	1938	Increase or Decrease since 1933
Total bed complement	261	292	292	340	330	330	+ 69
Average No. of beds available daily	254.5	292.0	292.0	322.0	324.5	330.0	+ 75.5
Average No. of beds occupied daily	181.6	226.5	206.2	232.5	244.6	256.8	+ 75.2
Percentage occupancy	71.4%	77.6%	70.6%	72.2%	75.3%	77.8%	+ 6.4
Total No. of patients treated to a conclusion	2,739	3,236	3,350	3,954	3,054	3,280	+ 541
Average duration of stay (days)	24.2	25.6	22.5	21.5	29.2	28.6	+ 4.4

TABLE No.13. 4 CONVALESCENT HOMES



From this table it will be noted that the total bed complement of 4 Convalescent Homes showed an increase of 69 beds since 1933, the average number of beds available daily an increase of 75.5 and the average number of beds occupied daily an increase of 75.2. There was an increase of 6.4 in percentage occupancy in the period. The total number of patients treated to a conclusion showed an increase of 541 and there was an increase of 4.4 days in the average duration of stay.

TWO OTHER INSTITUTIONS.

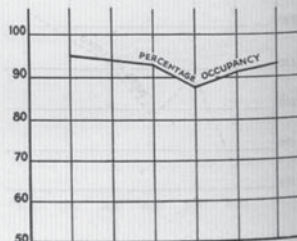
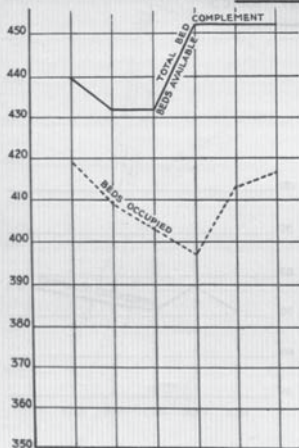
The following table gives the returns of beds, percentage occupancy, etc., of two other institutions (St. Patrick's Incurable Hospital, Cork, and Catholic Institution for the Deaf and Dumb, Dublin) for the six years 1933 to 1938 inclusive.

ITEM	1933	1934	1935	1936	1937	1938	Increase or Decrease since 1933
Total bed complement ...	440	432	432	452	452	452	+ 12
Average No. of beds available daily	440.0	432.0	432.0	452.0	452.0	452.0	+ 12
Average No. of beds occupied daily	418.7	409.0	403.0	397.8	413.7	416.3	- 2.4
Percentage occupancy ...	95.2%	94.7%	93.3%	88.0%	91.3%	92.1%	- 3.1
Total No. of patients treated to a conclusion ...	226	214	260	251	271	265	+ 39

2 OTHER INSTITUTIONS

TABLE NO.14

ST. PATRICK'S INCURABLE HOSPITAL, CORK
CATHOLIC INSTITUTE FOR THE DEAF AND DUMB, DUBLIN.



From this table it will be noted that the total bed complement of these two institutions showed an increase of 12 beds since 1933, the average number of beds available daily an increase of 12 and the average number of beds occupied daily a decrease of 2.4. There was a decrease of 3.1 in percentage occupancy in the period. The total number of patients treated to a conclusion showed an increase of 39.

HOSPITAL INCOME AND EXPENDITURE.

GENERAL HOSPITALS.

Comparable returns of ordinary income and expenditure for the six years, 1933 to 1938 inclusive, were obtained from 22 General Hospitals, and are summarised in the following table :—

Year			Total Ordinary Income	Increase over previous year	Total Ordinary Expenditure	Increase over previous year
			£	£	£	£
1933	185,600	—	211,573	—
1934	188,418	2,818	217,294	5,721
1935	197,305	8,887	234,152	16,858
1936	198,900	1,595	238,875	4,723
1937	190,378	8,522 Decrease	244,063	5,188
1938	197,246	6,868	263,526	19,463

Total ordinary income of these 22 General Hospitals showed an increase of £11,646 since 1933 and total ordinary expenditure an increase of £51,953.

The number of such General Hospitals which returned deficits and surpluses in each of the six years, together with the total amounts of same, are shown in the following table :—

Year			Number of Hospitals	Deficits of General Hospitals	Number of Hospitals	Surpluses of General Hospitals
				£		£
1933	17	29,091	5	3,118
1934	17	35,240	5	6,364
1935	17	43,193	5	6,346
1936	17	48,543	5	8,568
1937	16	60,179	6	6,494
1938	16	69,496	6	3,216

The deficits have shown a progressive upward trend since 1933 and increased in six years by the remarkable amount of £40,405. These deficits would have been considerably higher if the hospitals had not received an annual income from invested Sweepstake Funds held by them out of the distribution of the first six Sweepstakes. The following table shows how the deficit position was affected by such income from invested Sweepstake Funds :—

22 General Hospitals	1933		1934		1935		1936		1937		1938	
	No. of Hospitals	Amount	No. of Hospitals	Amount	No. of Hospitals	Amount	No. of Hospitals	Amount	No. of Hospitals	Amount	No. of Hospitals	Amount
		£		£		£		£		£		£
WITH DEFICITS	17	29,091	17	35,240	17	43,193	17	48,543	16	60,179	16	69,496
Income from invested Sweepstake Funds	14	20,618	16	26,320	16	25,476	16	24,201	15	24,965	15	25,224
Deficits if such income be excluded	17	49,709	17	61,460	17	68,669	17	72,744	16	85,144	16	94,720
WITH SURPLUSES	5	—	5	—	5	—	5	—	6	—	6	—
Income from invested Sweepstake Funds	2	1,852	4	4,920	4	6,724	4	7,320	5	8,491	5	8,708
Deficits if such income be excluded	1	544	2	1,265	2	2,522	2	1,399	4	2,922	4	6,880

It will be seen, therefore, that of 22 General Hospitals reviewed, the number showing deficits and the amount of such deficits for the six years under review, after excluding the income received from invested Sweepstake Funds, are as follows:—

1933	18	General Hospitals	£50,253
1934	19	" "	62,845
1935	19	" "	71,191
1936	19	" "	74,142
1937	20	" "	88,066
1938	20	" "	101,600

ANALYSIS OF ORDINARY INCOME OF 22 GENERAL HOSPITALS.

Appreciation of the trends of ordinary income of the 22 General Hospitals reviewed is better obtained by studying the variation in the following analysis of income for the years, 1933 to 1938:—

Year	Total	Voluntary Gifts	In-Patients	Out-Patients	Public Bodies etc.	Nurses' Fees etc.	Grants	Other Receipts	Interest, etc., Dividends from Sweepstake Funds	Interest from other Invested Funds
	£	£	£	£	£	£	£	£	£	£
1933 ...	185,600	7,627	56,296	3,360	32,885	14,370	13,703	401	22,471	34,487
1934 ...	188,418	7,461	54,201	3,262	37,920	10,059	9,560	3,605	32,140	30,210
1935 ...	197,305	7,625	54,726	3,865	44,019	9,466	9,861	2,183	32,201	33,359
1936 ...	198,900	7,422	71,649	3,231	31,541	6,715	9,456	222	31,440	37,224
1937 ...	190,378	8,600	65,696	3,086	28,498	8,385	8,824	3,306	33,267	30,716
1938 ...	197,246	7,684	72,253	5,651	31,307	7,213	10,488	4,055	33,932	24,663

ANALYSIS OF ORDINARY EXPENDITURE OF 22 GENERAL HOSPITALS.

The analysis of total ordinary expenditure of the 22 General Hospitals reviewed is equally informative in appraising the upward trend of expenditure during the six years, 1933 to 1938, as illustrated in the following table:—

Year	Total	Provisions	Surgery and Dispensary	Domestic	Salaries and Wages	Administration	Establishment	Finance and Maintenance
	£	£	£	£	£	£	£	£
1933 ...	211,573	58,138	31,334	37,913	48,049	12,036	15,127	8,976
1934 ...	217,294	56,955	33,880	40,172	50,326	12,956	13,717	9,288
1935 ...	234,152	58,080	37,526	42,059	53,485	12,587	19,710	10,705
1936 ...	238,875	57,999	40,326	43,261	56,224	13,472	15,854	11,739
1937 ...	244,063	61,284	40,975	44,771	57,763	13,497	13,760	12,013
1938 ...	263,526	65,720	43,796	46,723	62,099	14,324	18,063	12,801

SPECIAL HOSPITALS.

Comparable returns of ordinary income and expenditure for the six years, 1933 to 1938 inclusive, were obtained from 29 Special Hospitals, and are summarised in the following table :—

Year	Total Ordinary Income	Increase over previous year	Total Ordinary Expenditure	Increase over previous year
	£	£	£	£
1933	191,043	—	202,426	—
1934	204,900	13,866	214,023	11,597
1935	209,703	4,794	227,519	13,496
1936	220,234	10,531	240,136	12,617
1937	227,078	6,844	252,673	12,537
1938	240,315	13,237	267,294	14,621

Total ordinary income of these 29 Special Hospitals showed an increase of £49,272 since 1933, and total ordinary expenditure an increase of £64,868.

The number of such Special Hospitals which returned deficits and surpluses in each of the six years, together with the total amounts of same, are shown in the following table :—

Year	No. of Hospitals	Deficits	No. of Hospitals	Surpluses
		£		£
1933	14	20,784	15	9,401
1934	17	19,473	12	10,359
1935	16	26,259	13	8,443
1936	18	29,415	11	9,513
1937	22	31,669	7	6,074
1938	20	36,451	9	9,472

The total deficits increased by £15,667 in the six years and would have been considerably higher if the income received by the hospitals from invested Sweepstake Funds had not been available. The following table shows how the deficit position of the 29 Special Hospitals was affected by the income received from invested Sweepstake Funds in the possession of the hospitals :—

29 Special Hospitals	1933		1934		1935		1936		1937		1938	
	No. of Hospitals	Amount	No. of Hospitals	Amount	No. of Hospitals	Amount	No. of Hospitals	Amount	No. of Hospitals	Amount	No. of Hospitals	Amount
		£		£		£		£		£		£
WITH DEFICITS	14	20,784	17	19,473	16	26,359	18	29,415	22	31,669	20	36,451
Income from invested Sweepstake Funds	9	5,250	15	9,283	12	7,752	13	10,175	13	15,051	15	17,810
Deficits if such income be excluded ...	14	26,034	17	28,756	16	34,011	18	39,588	22	46,720	20	54,261
WITH SURPLUSES	15	—	12	—	13	—	11	—	7	—	9	—
Income from invested Sweep Funds	13	13,262	10	12,848	10	10,740	7	9,359	6	6,261	6	3,356
Deficits if such income be excluded ...	7	8,250	7	7,647	7	6,275	6	6,869	5	4,350	4	795

It will be seen, therefore, that of the 29 Special Hospitals reviewed, the number showing deficits and the amount of such deficits for the six years under review, after excluding income from invested Sweepstake Funds, are as follows :—

1933	21	Special Hospitals	£34,364
1934	24	" "	36,403
1935	23	" "	40,386
1936	24	" "	46,477
1937	27	" "	51,050
1938	24	" "	55,056

ANALYSIS OF ORDINARY INCOME OF 29 SPECIAL HOSPITALS.

The following table shows the analysis of ordinary income of the 29 Special Hospitals for the six years, 1933 to 1938 inclusive :—

Year	Total	Voluntary Gifts	In-Patients	Out-Patients	Public Bodies	Nurses' Fees	Grants	Other Receipts	Sweep Dividends	Other Dividends
1933 ...	£ 191,043	£ 6,597	£ 34,341	£ 4,577	£ 94,201	£ 7,127	£ 7,298	£ 5,445	£ 17,513	£ 13,944
1934 ...	204,909	9,123	35,677	4,587	97,296	4,808	6,905	9,216	22,131	15,166
1935 ...	209,703	7,601	39,236	3,874	102,869	4,930	6,203	7,736	18,492	18,762
1936 ...	220,234	7,092	38,450	5,061	112,479	4,415	7,161	10,499	19,532	15,545
1937 ...	227,078	7,338	40,766	5,087	117,622	4,391	6,232	9,437	21,312	14,893
1938 ...	240,315	7,332	42,867	4,916	126,056	4,790	9,853	8,735	21,166	14,600

ANALYSIS OF ORDINARY EXPENDITURE OF 29 SPECIAL HOSPITALS.

The following table shows the analysis of ordinary expenditure of the 29 Special Hospitals for the six years, 1933 to 1938 inclusive :—

Year	Total	Provisions	Surgery	Domestic	Salaries and Wages	Administration	Establishment	Finance and Maintenance
1933 ...	£ 202,426	£ 68,547	£ 14,610	£ 35,138	£ 42,883	£ 14,740	£ 13,493	£ 13,015
1934 ...	214,023	71,335	16,246	37,015	45,494	15,254	14,531	14,148
1935 ...	227,519	76,271	17,641	40,126	49,078	16,030	14,392	13,982
1936 ...	240,136	78,633	20,745	42,972	52,974	15,832	12,569	16,411
1937 ...	252,673	82,518	22,820	43,579	55,280	16,704	13,859	17,913
1938 ...	267,294	86,825	24,363	47,686	58,021	17,118	15,727	17,554

SUMMARY.

The comparable returns of income and expenditure for the six years, 1933 to 1938 inclusive, obtained from 51 Voluntary Hospitals (22 General and 29 Special) are summarised in the following table:—

Year	Total Ordinary Income	Increase over previous year	Total Ordinary Expenditure	Increase over previous year
	£		£	
1933	376,643	—	413,999	—
1934	393,327	16,684	431,317	17,318
1935	407,008	13,681	461,671	30,354
1936	419,134	12,126	479,011	17,340
		Decrease		
1937	417,456	1,678	496,736	17,725
1938	437,561	20,105	530,820	34,084

Total ordinary income of these 51 hospitals showed an increase of £60,918 since 1933, and total ordinary expenditure an increase of £116,821.

The number of such hospitals which returned deficits and surpluses in each of the six years, together with the amounts of same, are shown in the following table:—

Year	No. of Hospitals	Deficits	No. of Hospitals	Surpluses
		£		£
1933	31	49,875	20	12,519
1934	34	54,713	17	16,723
1935	33	69,462	18	14,789
1936	35	77,968	16	18,081
1937	38	91,848	13	12,569
1938	36	105,947	15	12,688

The total deficits of the 51 hospitals reviewed increased by £56,072 in the six years. The following table shows how the deficit position of these hospitals was affected by the income received from invested Sweepstake Funds possessed by the hospitals:—

51 Voluntary Hospitals	1933		1934		1935		1936		1937		1938	
	No. of Hospitals	Amount	No. of Hospitals	Amount	No. of Hospitals	Amount	No. of Hospitals	Amount	No. of Hospitals	Amount	No. of Hospitals	Amount
		£		£		£		£		£		£
WITH DEFICITS	31	49,875	34	54,713	33	69,462	35	77,968	38	91,848	36	105,947
Income from invested Sweepstake Funds	23	25,868	31	38,503	28	32,225	29	54,274	28	40,016	30	42,024
Deficits if such income be excluded ...	21	75,743	24	90,216	33	102,680	35	117,332	38	131,864	26	148,981
WITH SURPLUSES	20	—	17	—	18	—	16	—	13	—	15	—
Income from invested Sweepstake Funds	16	14,116	14	18,768	14	17,464	11	16,598	11	14,732	11	12,064
Deficits if such income be excluded ...	8	9,032	9	9,032	9	8,897	8	8,287	9	7,252	8	7,675

It will be seen, therefore, that of the 51 Voluntary Hospitals reviewed, the number showing deficits and the amount of such deficits for the six years under review, after excluding income from invested Sweepstake Funds, are as follows :—

1933	39 Hospitals	£84,617
1934	43	99,248
1935	42	111,577
1936	43	120,619
1937	47	139,116
1938	44	156,656

ANALYSIS OF ORDINARY INCOME OF 51 VOLUNTARY HOSPITALS.

The following table shows the analysis of ordinary income of the 51 Voluntary Hospitals for the six years, 1933 to 1938 inclusive :—

Year	Total	Voluntary Gifts	In-Patients	Out-Patients	Public Bodies etc.	Nurses' Fees etc.	Grants	Other Receipts	Interest, etc., Dividends from Sweepstake Funds	Interest from other Invested Funds
	£	£	£	£	£	£	£	£	£	£
1933 ...	376,643	14,224	90,637	7,937	127,086	21,497	21,001	5,846	39,984	48,431
1934 ...	393,327	16,584	89,878	7,849	135,216	14,867	16,465	12,821	54,271	45,376
1935 ...	407,008	15,226	93,962	7,739	146,888	14,396	16,064	9,919	50,693	52,121
1936 ...	419,134	14,514	110,099	8,292	144,020	11,130	16,617	10,721	50,972	52,769
1937 ...	417,456	15,938	106,462	8,173	146,120	12,776	15,056	12,743	54,579	45,609
1938 ...	437,561	15,016	115,120	10,567	157,363	12,003	20,341	12,790	55,098	39,263

ANALYSIS OF ORDINARY EXPENDITURE OF 51 VOLUNTARY HOSPITALS.

The following table shows the analysis of ordinary expenditure of the 51 Voluntary Hospitals for the six years, 1933 to 1938 inclusive :—

Year	Total	Provisions	Surgery and Dispensary	Domestic	Salaries and Wages	Administration	Establishment	Finance and Miscellaneous
	£	£	£	£	£	£	£	£
1933 ...	413,999	126,685	45,944	73,051	90,932	26,776	28,620	21,991
1934 ...	431,317	128,290	50,126	77,187	95,820	28,210	28,248	23,436
1935 ...	461,671	134,351	55,167	82,185	102,563	28,617	34,102	24,686
1936 ...	479,011	136,632	61,071	86,233	109,198	29,304	28,423	28,150
1937 ...	496,736	143,802	63,795	88,350	113,043	30,201	27,619	29,926
1938 ...	530,820	152,545	68,159	94,409	120,120	31,442	33,790	30,355

The increases and decreases since 1933 under the various headings of ordinary income are analysed in the following table :—

Ordinary Income	22 General Hospitals		29 Special Hospitals		Combined General and Special Hospitals	
	Increase	Decrease	Increase	Decrease	Increase	Decrease
	£	£	£	£	£	£
Voluntary gifts	57	—	735	—	792	—
In-patients' contributions	15,957	—	8,526	—	24,483	—
Out-patients' contributions	2,291	—	339	—	2,630	—
Public Bodies, Approved Societies, etc.	—	1,578	31,855	—	30,277	—
Nurses' Fees	—	7,157	—	2,337	—	9,494
Grants	—	3,215	2,555	—	—	660
Other receipts	3,654	—	3,290	—	6,944	—
Dividends from Sweep Funds	11,461	—	3,653	—	15,114	—
Dividends from other funds	—	9,824	656	—	—	9,168
TOTALS	33,420	21,774	51,609	2,337	80,240	19,322
Net Increase	11,646	—	49,272	—	60,918	—

The increases since 1933 under the various headings of ordinary expenditure are analysed in the following table :—

Ordinary Expenditure	22 General Hospitals		29 Special Hospitals		Combined General and Special Hospitals	
	£	£	£	£	£	£
Provisions	7,582	—	18,278	—	25,860	—
Surgery and Dispensary	12,462	—	9,753	—	22,215	—
Domestic	8,810	—	12,548	—	21,358	—
Salaries and Wages	14,050	—	15,138	—	29,188	—
Administration	2,288	—	2,378	—	4,666	—
Establishment	2,936	—	2,234	—	5,170	—
Finance and Miscellaneous	3,825	—	4,539	—	8,364	—
TOTALS	51,953	—	64,868	—	116,821	—



No. of Hospitals	In-patients		Total
	Male	Female	
1	100	100	200
2	200	200	400
3	300	300	600
4	400	400	800
5	500	500	1,000
6	600	600	1,200
7	700	700	1,400
8	800	800	1,600
9	900	900	1,800
10	1,000	1,000	2,000
11	1,100	1,100	2,200
12	1,200	1,200	2,400
13	1,300	1,300	2,600
14	1,400	1,400	2,800
15	1,500	1,500	3,000
16	1,600	1,600	3,200
17	1,700	1,700	3,400
18	1,800	1,800	3,600
19	1,900	1,900	3,800
20	2,000	2,000	4,000
21	2,100	2,100	4,200
22	2,200	2,200	4,400
23	2,300	2,300	4,600
24	2,400	2,400	4,800
25	2,500	2,500	5,000
26	2,600	2,600	5,200
27	2,700	2,700	5,400
28	2,800	2,800	5,600
29	2,900	2,900	5,800
30	3,000	3,000	6,000
31	3,100	3,100	6,200
32	3,200	3,200	6,400
33	3,300	3,300	6,600
34	3,400	3,400	6,800
35	3,500	3,500	7,000
36	3,600	3,600	7,200
37	3,700	3,700	7,400
38	3,800	3,800	7,600
39	3,900	3,900	7,800
40	4,000	4,000	8,000
41	4,100	4,100	8,200
42	4,200	4,200	8,400
43	4,300	4,300	8,600
44	4,400	4,400	8,800
45	4,500	4,500	9,000
46	4,600	4,600	9,200
47	4,700	4,700	9,400
48	4,800	4,800	9,600
49	4,900	4,900	9,800
50	5,000	5,000	10,000

STATISTICS RELATING TO THE VOLUNTARY AND SEMI-VOLUNTARY HOSPITALS IN ÉIRE FOR THE YEAR ENDING 31st DECEMBER, 1937.

TABLE No. 1. COMPARATIVE TABLE SHOWING BED OCCUPANCY, GENERAL HOSPITALS. AND OUT-PATIENTS' ATTENDANCES IN THE VOLUNTARY

No.	NAME OF HOSPITAL	Year	Total Bed Complement	Average No. of Beds Available Daily	Average No. of Beds Occupied Daily
1	DUBLIN : Adelaide Hospital	1933	170	155.0	116.8
		1934	*	—	—
		1935	*	—	—
		1936	*	—	—
		1937	*	—	—
		1938	*	—	—
2	Charitable Infirmary, Jervis Street	1933	150	137.0	107.2
		1934	150	137.0	100.9
		1935	150	129.0	99.6
		1936	150	120.6	105.0
		1937	146	126.5	102.1
		1938	146	128.9	104.4
3	Drumcondra Hospital	1933	40	40.0	31.8
		1934	40	40.0	30.0
		1935	40	40.0	32.0
		1936	*	—	—
		1937	*	—	—
		1938	*	—	—
4	Dun's (Sir Patrick) Hospital	1933	126	126.0	99.3
		1934	126	126.0	94.0
		1935	126	126.0	101.0
		1936	129	129.0	113.0
		1937	129	121.6	106.0
		1938	129	124.5	112.1
5	Mater Misericordiae Hospital	1933	299	263.0	177.9
		1934	299	247.0	196.0
		1935	299	247.0	201.3
		1936	300	246.0	207.0
		1937	300	249.1	210.8
		1938	300	258.6	223.7
6	Moath Hospital and County Dublin Infirmary	1933	150	140.0	127.4
		1934	150	145.3	127.2
		1935	156	146.4	131.1
		1936	156	142.8	136.0
		1937	156	148.0	129.4
		1938	156	149.9	131.1
7	Mercer's Hospital	1933	106	87.8	83.9
		1934	106	96.2	84.5
		1935	106	97.1	86.6
		1936	106	89.6	86.8
		1937	106	99.3	90.9
		1938	106	97.2	84.8
8	Richmond Hospital	1933	325	299.0	245.8
		1934	325	301.0	240.0
		1935	325	299.0	260.5
		1936	325	292.0	269.8
		1937	289	283.3	255.7
		1938	325	290.9	273.3
9	Royal City of Dublin Hospital... ..	1933	160	145.3	146.5
		1934	160	147.3	133.8
		1935	160	146.5	133.9
		1936	160	148.5	140.0
		1937	160	148.9	138.5
		1938	160	147.2	137.7

* No figures available.

FOR THE YEAR 1938
 PATIENTS TREATED, COST PER OCCUPIED BED
 HOSPITALS IN THE YEARS 1933, 1934, 1935, 1936, 1937 AND 1938.

Percentage Occupancy	Total No. Treated to Conclusion	Average Duration of each Patient in Hospital (Days)	Percentage of Free Patients (Paying 10/- or Under)	Cost per Occupied Bed per Annum	Out-Patients' Attendances
75.4	2,054	20.8	*	£ s. d. 162 18 11	32,320
—	—	—	—	—	—
—	—	—	—	—	—
—	—	—	—	—	—
78.2	1,809	21.6	74.5	113 13 9	41,010
73.6	1,813	20.3	68.1	137 16 1	44,206
77.2	1,966	18.4	71.2	157 4 4	70,770
87.1	1,895	20.3	68.3	146 4 2	78,838
80.7	1,754	21.3	77.3	154 4 3	72,869
80.9	1,818	21.0	70.2	157 10 2	54,527
79.5	471	24.6	34.9	66 11 11	4,160
75.0	526	20.8	43.3	78 3 3	4,200
80.0	426	27.4	46.9	73 14 10	*
—	—	—	—	—	—
—	—	—	—	—	—
78.8	1,740	20.8	59.4	153 1 6	35,008
74.6	1,576	21.8	60.6	189 16 5	**44,828
80.2	1,758	20.9	60.4	194 15 4	†81,472
87.6	1,877	22.0	54.0	171 19 9	87,547
87.2	1,699	22.7	56.9	207 7 9	89,970
90.1	1,893	21.6	44.2	216 12 1	90,913
67.7	3,702	17.3	54.5	*	110,565
79.4	3,407	21.0	58.9	99 16 4	101,581
81.5	3,634	22.2	61.4	99 9 11	114,073
84.2	3,773	20.1	63.5	103 4 11	100,874
85.0	3,981	19.3	70.1	119 12 0	102,440
86.5	4,267	19.1	61.3	112 17 9	116,249
91.0	1,633	28.5	62.7	152 0 0	‡24,592
87.6	1,572	29.5	49.8	143 19 2	‡26,295
89.5	1,807	26.5	43.3	155 15 10	‡27,144
95.2	1,692	29.4	45.1	158 11 9	91,458
87.4	1,744	27.1	56.9	182 5 10	93,721
87.4	1,771	27.0	51.5	184 0 8	81,705
95.6	1,299	23.6	44.8	131 10 3	17,739
87.8	1,327	23.2	38.2	138 19 9	17,971
89.2	1,307	24.2	43.4	140 2 1	17,516
96.9	1,289	24.7	47.7	153 1 10	21,573
91.5	1,361	24.4	48.4	145 19 0	18,641
87.2	1,355	22.1	43.3	176 14 9	19,151
82.2	3,382	26.5	32.1	134 14 7	24,788
79.7	3,309	26.5	37.1	133 12 5	29,679
87.1	3,444	27.6	35.3	127 16 5	36,626
92.4	3,617	27.3	41.9	132 12 1	40,293
90.0	3,744	24.9	34.4	141 1 10	43,859
94.0	4,140	24.1	31.2	144 6 11	48,743
100.8	2,408	22.2	47.8	121 14 5	50,816
90.8	2,285	21.4	59.0	143 15 4	53,744
91.4	2,212	22.1	56.8	146 9 0	45,883
94.3	2,377	21.6	61.3	139 14 4	45,395
93.0	2,264	22.3	54.5	150 1 8	49,569
93.6	2,189	23.0	47.7	164 3 2	53,182

** Excluding subsequent dressings.

† Including subsequent dressings.

‡ First visits only.

TABLE No. 1—(continued.)

No.	NAME OF HOSPITAL	Year	Total Bed Comple- ment	Average No. of Beds Available Daily	Average No. of Beds Occupied Daily
10	St. Vincent's Hospital...	1933	176	160-0	145-3
		1934	176	156-0	144-0
		1935	176	150-0	140-0
		1936	176	153-0	144-1
		1937	176	154-0	146-4
11	Steevens' (Dr.) Hospital	1938	176	148-4	141-4
		1933	180	174-0	148-4
		1934	180	176-0	149-5
		1935	180	174-2	157-2
		1936	190	187-7	167-8
12	DUBLIN COUNTY : Monkstown Hospital ...	1937	190	184-9	153-2
		1938	197	189-4	171-7
		1933	25	25-0	13-5
		1934	25	25-0	14-0
		1935	25	25-0	14-0
13	St. Michael's Hospital, Dún Laoghaire ...	1936	25	25-0	16-6
		1937	25	25-0	16-1
		1938	25	25-0	17-1
		1933	43	43-0	32-8
		1934	43	43-0	33-5
14	CORK : Cobh General Hospital	1935	42	42-0	38-6
		1936	42	42-0	41-0
		1937	42	42-0	46-1
		1938	42	42-0	44-4
		1933	35	35-0	17-1
15	Mercy Hospital	1934	35	35-0	17-0
		1935	35	35-0	16-0
		1936	35	35-0	19-8
		1937	35	35-0	22-5
		1938	35	35-0	24-6
16	North Charitable Infirmary	1933	140	140-0	119-9
		1934	149	149-0	120-0
		1935	149	149-0	120-0
		1936	149	149-0	123-6
		1937	149	149-0	111-2
17	South Charitable Infirmary	1938	147	147-0	123-8
		1933	126	115-0	101-3
		1934	126	115-0	104-9
		1935	126	126-0	104-9
		1936	120	113-7	105-8
18	Barrington's Hospital and City of Limerick Infirmary	1937	120	115-0	103-6
		1938	120	114-0	108-3
		1933	134	134-0	111-3
		1934	134	129-0	119-5
		1935	134	129-0	119-0
19	LIMERICK : Barrington's Hospital and City of Limerick Infirmary	1936	134	122-4	103-9
		1937	134	126-6	102-0
		1938	134	131-1	111-9
		1933	61	50-0	39-3
		1934	66	63-5	45-0
		1935	76	71-5	48-0
		1936	80	79-0	54-5
		1937	80	80-0	59-0
		1938	80	80-0	60-0

Percentage Occupancy	Total No. Treated to Conclusion	Average Duration of each Patient in Hospital (Days)	Percentage of Free Patients (Paying 10/- or Under)	Cost per Occupied Bed per Annum	Out-Patients' Attendances
90.8	2,628	20.2	59.3	£ s. d. 126 2 9	42,432
92.3	2,603	20.2	63.2	129 9 8	47,839
93.3	2,466	20.7	62.8	143 18 10	52,915
94.2	2,737	19.3	62.5	139 10 2	57,078
95.0	2,734	19.6	65.0	131 8 2	54,232
95.3	2,797	18.5	64.4	139 16 11	54,807
85.3	1,562	34.7	27.7	163 2 5	59,921
84.9	1,777	30.7	24.1	105 5 7	58,767
90.2	1,822	31.4	19.6	103 17 0	58,566
89.4	2,086	29.4	30.2	104 8 3	65,327
82.8	2,399	23.3	41.8	114 15 0	64,978
90.6	2,399	26.1	41.0	110 8 8	65,308
54.0	511	9.6	39.3	168 7 2	4,327
56.0	479	10.7	22.1	175 17 2	5,644
56.0	530	9.7	11.4	185 3 4	4,975
66.6	549	11.1	70.5	155 16 7	7,537
64.4	573	10.3	62.5	175 4 7	3,555
68.6	598	10.5	60.6	175 8 4	5,047
76.3	587	20.4	73.2	190 11 3	13,518
77.4	821	14.8	74.8	147 0 10	13,947
91.9	768	18.3	74.4	131 4 11	14,321
97.7	881	17.1	80.7	141 2 3	14,169
109.8	887	19.0	52.2	130 3 6	12,341
105.7	928	17.5	54.0	134 17 0	13,920
48.9	191	32.7	*	54 11 1	3,130
48.6	169	36.7	*	49 19 1	*
45.7	154	37.9	*	54 16 9	*
56.4	123	58.8	Nil	45 13 2	3,756
64.3	145	56.6	Nil	49 1 2	*
70.2	102	88.0	8.6	44 19 9	2,122
85.6	2,316	18.9	16.6	110 10 7	17,841
80.5	2,318	18.9	30.6	114 17 11	17,969
80.5	2,183	20.1	27.7	117 13 10	14,531
82.9	2,271	19.9	20.7	121 14 10	13,847
74.6	2,100	19.3	22.1	123 15 4	12,155
84.2	2,256	20.0	23.7	139 1 6	14,336
88.1	1,553	23.8	57.4	88 14 0	53,864
91.2	1,586	24.1	56.0	97 2 7	53,175
83.3	1,641	23.3	56.5	126 4 3	57,317
92.9	1,728	22.4	62.5	98 9 1	60,594
90.0	1,635	23.1	68.0	91 12 6	71,605
94.5	1,622	24.4	71.8	94 4 1	71,359
83.1	1,896	21.4	46.7	104 1 9	21,553
92.6	2,025	21.5	45.4	98 17 3	21,234
92.2	2,048	21.2	49.6	102 7 11	21,572
84.4	1,965	19.3	52.4	119 14 7	22,430
80.6	2,015	18.5	46.3	121 13 9	19,678
85.4	2,038	20.0	49.5	121 1 11	24,573
78.6	1,157	12.4	61.1	119 8 8	17,938
70.9	1,445	11.4	60.0	110 10 8	17,514
67.1	1,521	11.5	56.0	134 16 2	21,286
69.0	1,770	11.3	51.4	111 14 9	26,512
73.7	1,816	11.9	47.9	109 14 6	28,295
75.0	1,846	11.9	48.9	113 9 0	28,087

* No figures available.

TABLE No. 1—(continued).

No.	NAME OF HOSPITAL	Year	Total Bed Complement	Average No. of Beds Available Daily	Average No. of Beds Occupied Daily
20	Limerick County Infirmary	1933	49	49.0	36.8
		1934	63	52.0	41.0
		1935	63	63.0	45.0
		1936	66	66.0	50.4
		1937	66	66.0	57.0
		1938	66	66.0	61.0
21	St. John's Hospital	1933	69	69.0	50.0
		1934	69	64.4	49.8
		1935	69	69.0	48.8
		1936	69	67.7	48.1
		1937	*	—	—
		1938	70	70.0	53.0
22	GALWAY : Central Hospital	1933	317	317.0	278.2
		1934	311	311.0	231.0
		1935	311	311.0	254.0
		1936	299	299.0	271.0
		1937	311	311.0	275.6
		1938	311	311.0	290.5
23	WATERFORD : County and City Infirmary	1933	52	52.0	36.7
		1934	52	52.0	46.0
		1935	55	55.0	43.3
		1936	55	50.0	41.6
		1937	55	53.0	44.7
		1938	55	51.0	38.1
24	Martin Hospital, Portlaoighain	1933	10	10.0	3.3
		1934	10	10.0	2.7
		1935	10	10.0	3.7
		1936	10	10.0	4.0
		1937	10	10.0	3.2
		1938	*	—	—
25	LOUTH : Drogheda Cottage Hospital	1933	†28	28.0	17.2
		1934	†28	27.8	20.1
		1935	†28	27.8	19.7
		1936	22	22.0	20.0
		1937	22	22.0	18.9
		1938	22	21.9	16.0
26	KILDARE : Kildare County Infirmary	1933	36	36.0	27.3
		1934	39	39.0	27.4
		1935	39	39.0	25.1
		1936	39	39.0	26.0
		1937	39	39.0	30.2
		1938	39	39.0	33.1
27	Drogheda Memorial Hospital	1933	13	13.0	6.7
		1934	12	12.0	6.2
		1935	13	13.0	5.2
		1936	14	14.0	6.8
		1937	14	14.0	8.6
		1938	14	14.0	8.9

* No figures available.

† 3 cots in Maternity Ward included in error.

Percentage Occupancy	Total No. Treated to Conclusion	Average Duration of each Patient in Hospital (Days)	Percentage of Free Patients (Paying 10/- or Under)	Cost per Occupied Bed per Annum	Out-Patients' Attendances
75.1	874	15.4	70.7	£ s. d. 110 16 5	1,012
78.8	847	17.7	82.9	123 17 11	2,660
71.4	878	16.5	68.9	116 16 8	3,072
76.4	1,000	18.3	68.1	114 4 1	3,280
86.4	1,106	18.8	42.7	107 2 8	3,096
92.4	1,110	20.1	65.4	109 12 2	4,250
72.5	1,085	16.8	37.2	101 0 11	10,660
77.3	973	18.7	34.9	102 18 5	10,746
70.7	1,085	16.7	31.4	104 12 8	10,923
71.0	1,261	14.0	32.6	104 1 5	12,676
—	—	—	—	—	—
75.7	1,559	12.4	21.4	98 5 4	13,728
87.8	4,683	21.7	58.6	100 0 5	760
74.3	3,965	21.3	61.5	123 6 0	1,412
81.7	4,755	19.7	64.1	117 15 8	1,432
90.3	4,937	20.0	63.5	116 9 11	1,147
88.6	5,259	19.1	56.0	118 12 11	3,125
93.4	5,600	18.9	61.4	129 2 2	2,920
70.6	864	15.5	81.7	184 19 0	10,897
88.5	952	17.6	91.1	105 8 7	14,913
78.7	900	17.6	91.2	138 5 5	12,971
83.0	856	17.7	88.7	121 18 10	17,617
84.3	899	18.1	69.8	124 0 1	19,367
74.7	909	15.3	68.1	162 8 5	19,221
33.0	28	43.0	93.9	81 9 6	2,052
27.0	33	29.9	100.0	113 11 5	*
37.0	43	31.6	94.6	81 12 8	*
40.0	60	24.6	99.3	86 15 4	1,294
32.0	55	21.3	96.4	91 19 4	*
—	—	—	—	—	—
61.4	292	21.5	29.1	105 8 8	1,825
72.3	322	22.8	31.8	104 9 2	1,961
70.9	314	22.9	37.6	107 8 1	2,162
91.1	256	28.6	33.0	113 2 4	2,249
85.9	254	27.2	18.7	117 2 7	2,266
73.3	269	21.8	22.6	146 6 0	2,743
75.8	*	*	*	*	705
70.3	387	25.8	87.9	75 9 2	985
64.4	467	19.5	71.7	77 13 3	883
66.6	508	18.7	73.1	70 2 6	870
77.4	520	21.2	86.8	73 8 5	1,363
84.1	529	22.8	84.9	—	1,351
51.5	135	18.1	88.1	163 17 4	247
51.7	137	16.5	70.7	187 14 0	160
40.0	135	14.0	*	235 13 2	165
48.6	162	15.4	93.6	241 7 6	142
61.4	166	18.9	76.0	216 19 4	140
63.4	166	19.5	81.7	165 0 1	528

TABLE No. 1—(continued).

No.	NAME OF HOSPITAL	Year	Total Bed Completion	Average No. of Beds Available Daily	Average No. of Beds Occupied Daily
28	KERRY : Valentia Village Hospital	1933	8	8-0	4-1
		1934	8	*	*
		1935	11	11-0	8-0
		1936	11	11-0	8-0
		1937	11	11-0	5-1
		1938	11	11-0	4-9
29	MEATH : Meath County Infirmary	1933	41	41-0	37-0
		1934	41	41-0	40-0
		1935	41	41-0	39-0
		1936	41	41-0	35-0
		1937	41	41-0	35-5
		1938	43	43-0	42-1
30	DONEGAL : Sheil Hospital, Ballyshannon	1933	33	33-0	23-6
		1934	33	33-0	22-0
		1935	33	33-0	23-5
		1936	36	36-0	26-9
		1937	36	36-0	29-0
		1938	36	36-0	28-7

* No figures available.

Percentage Occupancy	Total No. Treated to Conclusion	Average Duration of each Patient in Hospital (Days)	Percentage of Free Patients (Paying 10/- or Under)	Cost per Occupied Bed per Annum	Out-Patients' Attendances
51.3	*	*	*	£ s. d. 67 13 4	*
*	*	*	*	*	1,700
72.7	94	31.1	87.5	47 2 1	1,768
72.7	90	32.5	*	*	1,843
46.4	93	20.0	*	*	1,935
44.9	119	15.2	*	*	1,555
90.2	*	*	*	*	176
97.6	544	26.8	38.0	65 1 3	202
95.1	499	28.5	38.6	91 18 8	188
85.4	497	25.8	32.8	80 14 1	238
86.6	542	23.9	30.5	102 1 2	†328
97.9	554	27.7	24.3	87 5 10	†305
71.5	332	25.9	73.3	90 7 11	*
66.7	407	19.7	72.7	100 3 2	*
71.2	512	16.7	56.6	99 6 5	*
74.8	399	24.7	57.6	109 5 3	*
80.5	429	24.7	59.0	97 8 3	*
79.8	481	21.8	63.5	97 10 6	*

† Approximate figures only. Complete records not available.

TABLE No. 1—(continued).

SPECIAL HOSPITALS.

No.	NAME OF HOSPITAL	Year	Total Bed Complement	Average No. of Beds Available Daily	Average No. of Beds Occupied Daily
31	MATERNITY : <i>Dublin</i> : Coombe Lying-in Hospital	1933	66	66·0	52·8
		1934	66	66·0	54·9
		1935	62	64·0	55·0
		1936	60	57·0	54·9
		1937	60	58·0	56·5
		1938	86	62·9	56·7
32	National Maternity Hospital, Holles Street	1933	60	60·0	48·4
		1934	69	60·0	51·0
		1935	87	87·0	72·0
		1936	84	84·0	78·5
		1937	84	84·0	81·6
		1938	130	107·0	95·2
33	Rotunda Hospital	1933	135	135·0	91·1
		1934	135	135·0	99·1
		1935	135	135·0	107·5
		1936	135	131·2	109·5
		1937	148	137·5	105·3
		1938	148	144·5	108·1
34	<i>Corb</i> : County and City of Cork Lying-in Hospital	1933	25	25·0	14·7
		1934	25	25·0	16·0
		1935	25	25·0	19·7
		1936	25	25·0	18·7
		1937	25	25·0	23·0
		1938	25	25·0	20·0
35	<i>Limerick</i> : Bedford Row Lying-in Hospital ...	1933	26	26·0	14·3
		1934	26	26·0	15·0
		1935	26	26·0	16·0
		1936	26	26·0	14·0
		1937	26	26·0	14·4
		1938	26	26·0	16·4
36	<i>Waterford</i> : Waterford Maternity Hospital ...	1933	12	12·0	2·9
		1934	12	12·0	3·3
		1935	12	12·0	3·6
		1936	12	12·0	4·3
		1937	12	12·0	4·4
		1938	12	12·0	4·2
37	CHILDREN'S : <i>Dublin</i> : Children's Hospital, Temple Street ...	1933	125	110·0	104·2
		1934	125	119·0	112·0
		1935	125	119·0	113·0
		1936	125	121·0	117·9
		1937	125	118·0	116·3
		1938	125	116·0	113·4
38	National Children's Hospital, Harcourt Street	1933	53	†	†
		1934	53	53·0	40·5
		1935	53	53·0	39·2
		1936	53	46·6	39·0
		1937	53	51·4	40·0
		1938	73	58·4	46·7
39	Teach Ullain	1933	52	52·0	45·3
		1934	52	52·0	51·4
		1935	52	52·0	51·3
		1936	62	53·8	54·2
		1937	62	62·0	57·3
		1938	62	62·0	60·4

† Closed during 1933.

Percentage Occupancy	Total No. Treated to Conclusion	Average Duration of each Patient in Hospital (Days)	Percentage of Free Patients (Paying 10/- or Under)	Cost per Occupied Bed per Annum	Out-Patients' Attendances
80-0	1,907	10-1	76-5	£. s. d. 134 1 7	8,557
83-2	2,013	10-0	97-4	128 19 4	9,733
85-9	1,871	10-7	80-0	137 9 11	9,663
96-4	1,825	11-0	73-4	145 13 1	11,167
97-4	1,911	10-8	78-3	140 7 3	11,860
90-2	2,036	10-2	85-1	156 7 3	12,105
80-7	1,665	10-6	43-4	155 11 9	7,487
85-0	1,764	10-6	47-1	158 16 0	7,842
82-8	2,711	9-6	44-7	180 12 1	9,017
93-5	3,143	9-1	43-3	161 18 8	10,985
97-1	3,224	9-2	45-2	164 9 6	12,091
89-0	3,559	9-5	44-1	171 9 11	14,574
67-5	3,442	9-7	75-2	152 2 11	16,132
73-4	3,890	9-3	76-9	122 0 2	20,736
79-7	3,762	10-4	72-7	130 5 6	20,452
83-5	4,089	9-8	67-5	136 8 7	24,620
76-6	4,004	9-6	77-2	152 19 5	26,372
74-8	4,058	9-7	77-2	170 1 1	33,696
58-8	509	10-5	81-6	134 0 2	4,775
64-0	539	10-8	56-3	145 6 7	3,063
78-8	667	10-8	57-6	121 6 8	3,734
75-0	391	17-4	37-4	135 2 4	6,600
92-0	663	12-7	72-9	143 14 2	3,825
79-9	574	12-7	71-7	149 14 0	9,876
55-0	434	12-0	90-9	109 2 1	2,920
57-7	515	10-6	80-0	106 14 5	5,356
61-5	585	9-9	75-0	108 5 2	6,505
53-8	514	10-0	71-4	130 19 0	1,540
55-4	478	11-0	72-4	128 17 10	3,566
63-1	539	11-1	65-4	142 16 7	4,022
24-2	94	11-3	51-7	203 10 6	*
27-5	119	10-1	54-5	176 9 2	*
30-3	134	9-8	55-6	167 3 3	*
36-1	133	11-9	46-5	158 14 5	*
36-6	139	11-6	54-5	157 10 0	*
35-4	130	11-9	47-4	170 8 2	*
94-7	2,254	16-9	58-5	113 8 9	54,979
94-1	2,210	18-5	70-0	102 10 4	62,191
95-0	2,198	18-8	59-3	100 12 3	62,809
97-4	2,350	18-4	52-6	93 4 10	53,970
98-5	2,364	17-9	46-4	98 18 6	46,906
97-8	2,363	17-5	48-2	103 7 10	57,272
†	†	†	†	†	29,802
76-4	811	18-2	72-1	143 2 5	35,714
74-0	624	22-9	71-9	170 10 5	33,674
83-6	704	20-3	75-4	173 15 0	25,263
77-8	931	15-7	74-6	177 14 5	25,604
79-9	1,156	14-7	66-6	183 4 10	28,321
87-1	273	60-6	96-2	107 3 8	11,680
98-8	372	50-4	97-1	96 8 1	10,362
98-7	411	45-6	97-7	99 13 5	12,421
100-9	546	36-3	98-1	101 14 9	15,877
92-4	566	36-8	88-7	108 13 3	17,687
97-4	614	35-9	89-9	111 10 3	14,530

TABLE No. 1—(continued).

No.	NAME OF HOSPITAL	Year	Total Bed Complement	Average No. of Beds Available Daily	Average No. of Beds Occupied Daily
40	CANCER : Dublin : St. Anne's Hospital'	1933	83	68·0	35·0
		1934	82	62·0	31·0
		1935	59	59·0	38·0
		1936	59	58·0	45·4
		1937	59	57·0	44·7
		1938	59	57·7	47·4
41	City of Dublin Skin and Cancer Hospital	1933	48	47·0	31·2
		1934	48	48·0	35·3
		1935	49	49·0	39·4
		1936	56	56·0	42·2
		1937	56	56·0	44·7
		1938	56	55·0	43·1
42	EYE AND EAR : Dublin : Royal Victoria Eye and Ear Hospital	1933	134	134·0	102·0
		1934	134	134·0	107·8
		1935	134	134·0	105·9
		1936	134	134·0	103·7
		1937	134	134·0	107·9
		1938	134	121·0	108·1
43	Cork : Eye, Ear and Throat Hospital ...	1933	45	45·0	29·5
		1934	45	45·0	31·0
		1935	45	45·0	32·0
		1936	48	48·0	33·0
		1937	48	48·0	34·1
		1938	48	48·0	36·0
44	ORTHOPAEDIC : Dublin : Incorporated Orthopaedic Hospital of Ireland	1933	80	76·0	70·8
		1934	79	76·0	67·1
		1935	77	76·0	69·0
		1936	77	76·0	69·1
		1937	77	75·0	68·2
		1938	77	74·0	70·4
45	St. Mary's Open-Air Orthopaedic Hospital, Cappagh	1933	236	237·2	231·0
		1934	236	236·0	233·9
		1935	236	236·0	233·9
		1936	236	236·0	236·3
		1937	240	240·0	243·7
		1938	240	240·0	247·8
46	Westmeath : St. Joseph's Orthopaedic Hospital, Coole	1933	92	92·0	88·7
		1934	116	106·0	102·0
		1935	121	119·0	117·0
		1936	119	119·0	122·2
		1937	119	119·0	123·6
		1938	119	119·0	124·7
47	FEVER : Dublin Fever Hospital and House of Recovery	1933	250	250·0	219·3
		†1934	273	268·0	262·5
		†1935	270	270·0	256·8
		†1936	298	273·0	266·0
		1937	+	—	—
		1938	+	—	—
48	Cork : Fever Hospital and House of Recovery	1933	110	92·5	28·4
		1934	110	86·0	14·7
		1935	110	90·0	11·6
		1936	110	74·3	25·1
		1937	110	61·4	40·6
		1938	102	74·5	27·5

† Including Beneavin Convalescent Home.

‡ No figures available.

Percentage Occupancy	Total No. Treated to Conclusion	Average Duration of each Patient in Hospital (Days)	Percentage of Free Patients (Paying 10/- or Under)	Cost per Occupied Bed per Annum	Out-Patients' Attendances
				£ s. d.	
51.5	380	33.6	8.6	165 8 9	4,248
50.0	474	23.9	6.5	202 11 11	4,924
64.4	680	20.4	5.3	189 18 5	5,099
78.2	937	17.7	1.3	200 17 4	4,661
78.4	940	17.4	2.1	233 5 5	4,945
82.1	1,000	17.3	1.4	223 0 1	6,089
66.4	231	49.3	8.0	172 10 6	11,280
73.5	330	39.0	8.5	161 16 9	7,583
80.3	409	35.2	12.7	180 2 7	7,068
75.3	493	31.3	9.5	180 14 10	9,516
79.8	559	29.2	6.4	182 17 8	13,037
78.3	476	33.0	6.7	214 10 2	12,568
76.1	2,757	13.5	33.4	131 8 6	42,932
80.4	2,905	13.5	36.0	131 10 2	43,632
79.0	2,871	13.5	39.7	126 4 9	42,691
77.4	2,986	12.7	30.0	133 10 1	44,635
80.5	3,094	12.7	39.2	132 17 4	44,430
89.3	3,074	12.8	26.1	138 16 7	46,728
65.6	1,084	9.9	10.2	111 8 4	8,709
68.9	948	11.9	6.5	114 13 7	7,738
71.1	963	12.2	6.3	111 17 6	8,686
68.8	892	13.5	9.1	108 13 6	13,012
71.0	936	13.3	12.8	105 15 7	13,233
74.9	872	15.1	12.5	105 8 2	14,748
93.2	152	170.0	8.9	60 6 9	6,918
88.3	145	168.9	8.9	72 14 10	7,333
90.8	160	167.4	6.8	70 7 6	6,931
91.0	162	156.2	4.3	75 6 4	7,731
90.9	128	194.4	4.6	79 14 8	8,652
95.2	167	154.0	3.8	75 14 2	9,441
97.4	359	234.9	19.0	87 1 1	*
99.1	330	258.7	15.6	82 6 6	*
99.1	318	268.5	12.7	77 3 1	*
100.1	299	289.3	13.1	88 10 10	*
101.5	304	292.6	13.7	82 8 3	*
103.2	288	314.0	9.1	88 3 8	*
96.4	69	469.2	10.1	51 4 5	*
96.2	43	865.8	8.8	58 3 2	*
98.3	66	647.0	7.7	58 19 9	*
102.7	53	843.9	4.9	63 6 3	*
103.9	83	543.4	4.5	66 12 2	*
104.8	47	968.5	3.5	63 9 2	*
87.7	2,584	31.0	28.7	84 4 9	*
97.9	2,291	41.8	19.5	95 0 9	*
95.1	2,279	35.9	8.1	118 14 0	*
97.4	2,444	39.8	4.0	123 0 2	*
—	—	—	—	—	*
—	—	—	—	—	*
30.7	304	34.1	71.1	149 3 5	*
17.1	243	22.1	89.1	283 11 11	*
12.9	181	23.4	94.0	314 14 10	*
33.8	313	29.4	90.4	173 5 2	*
66.1	457	32.4	92.4	113 18 4	*
36.9	306	32.8	84.5	169 15 1	*

* No Out-Patient Department.

TABLE No. 1—(continued).

No.	NAME OF HOSPITAL	Year	Total Bed Complement	Average No. of Beds Available Daily	Average No. of Beds Occupied Daily
49	TUBERCULOSIS : <i>Dublin</i> : Our Lady of Lourdes Hospital ...	1933	87	69.0	72.4
		1934	92	90.4	87.4
		1935	92	92.0	90.4
		1936	92	92.0	90.3
		1937	92	92.0	85.5
		1938	92	92.0	90.3
50	Peamount Sanatorium ...	1933	279	279.0	276.0
		1934	293	280.0	279.0
		1935	350	329.0	315.7
		1936	342	342.0	322.6
		1937	342	342.0	331.9
		1938	337	337.0	349.1
51	<i>Wicklow</i> : Royal National Hospital for Consumption for Ireland.	1933	123	123.0	113.8
		1934	123	123.0	109.8
		1935	123	123.0	112.0
		1936	127	127.0	117.9
		1937	123	123.0	119.5
		1938	126	126.0	119.1
52	Countess of Wicklow Memorial Hospital	1933	44	44.0	46.6
		1934	50	50.0	48.2
		1935	54	54.0	52.2
		1936	54	54.0	51.6
		1937	56	55.0	53.3
		1938	58	57.5	57.6
53	OTHER INSTITUTIONS : <i>Dublin</i> : Incorporated Dental Hospital of Ireland	1933	50 Chairs	—	—
		1934	50 "	—	—
		1935	50 "	—	—
		1936	50 "	—	—
		1937	50 "	—	—
		1938	50 "	—	—
54	<i>Cork</i> : Cork Dental Hospital ...	1933	14 Chairs	—	—
		1934	14 "	—	—
		1935	14 "	—	—
		1936	14 "	—	—
		1937	14 "	—	—
		1938	14 "	—	—
55	<i>Dublin</i> : Beaumont Convalescent Home ...	1933	102	102.0	70.4
		1934	102	102.0	77.5
		1935	102	102.0	60.3
		1936	102	102.0	56.9
		1937	92	92.0	55.0
		1938	92	92.0	67.2
56	Cheeverstown Convalescent Home ...	†1933	—	—	—
		††1934	38	38.0	24.0
		††1935	38	38.0	25.0
		††1936	43	43.0	27.3
		1937	43	37.0	24.5
		1938	43	43.0	26.1
57	Linden Convalescent Home ...	1933	124	119.5	92.2
		1934	117	117.0	100.0
		1935	117	117.0	97.0
		1936	160	142.0	127.3
		1937	160	160.0	145.0
		1938	160	160.0	143.8

† Closed during 1933.

†† Open only from 20th August to 15th December.

††† Closed from 15th December, 1934, to 17th January, 1935.

Percentage Occupancy	Total No. Treated to Conclusion	Average Duration of each Patient in Hospital (Days)	Percentage of Free Patients (Paying 10/- or Under)	Cost per Occupied Bed per Annum	Out-Patients' Attendances
104.9	134	197.2	4.1	£ s. d. 110 11 9	*
96.7	132	241.7	3.0	110 12 6	*
98.3	158	208.9	4.0	109 1 0	*
98.2	168	196.8	3.5	117 12 6	*
92.9	139	224.6	8.1	127 12 7	*
98.2	97	339.9	8.0	124 4 2	*
98.9	432	233.2	2.6	94 8 7	*
99.5	458	222.3	4.1	96 18 5	*
98.0	448	257.1	2.9	95 11 2	*
94.3	548	215.3	2.5	92 6 11	*
97.1	325	230.7	0.6	92 18 0	*
103.6	493	258.4	0.6	90 14 6	*
92.5	277	150.0	—	113 4 6	*
99.3	230	174.2	—	112 12 0	*
91.1	222	184.3	—	114 1 8	*
92.8	232	186.0	—	109 16 3	*
97.1	282	154.7	—	126 5 10	*
94.5	270	161.0	—	123 18 4	*
105.9	103	165.1	33.0	64 1 4	1,265
97.6	120	148.4	35.0	68 3 9	1,693
96.7	126	151.2	32.0	66 16 6	1,710
95.6	126	150.0	29.8	73 17 8	1,515
96.9	130	149.8	32.0	78 6 0	1,238
100.2	114	184.4	31.2	79 7 1	1,180
—	—	—	92.8	—	34,523
—	—	—	98.3	—	35,476
—	—	—	96.7	—	37,672
—	—	—	97.0	—	41,832
—	—	—	96.6	—	45,432
—	—	—	96.5	—	52,733
—	—	—	90.8	—	7,742
—	—	—	92.5	—	7,723
—	—	—	**	—	7,964
—	—	—	**	—	7,767
—	—	—	**	—	8,774
—	—	—	**	—	8,779
69.0	793	32.3	34.9	166 11 2	*
76.0	922	30.7	64.0	93 17 5	*
59.1	855	26.9	50.4	122 5 9	*
55.7	834	24.9	50.1	137 2 1	*
59.8	767	26.2	61.0	149 5 1	*
73.0	987	24.8	67.6	109 18 4	*
—	—	—	—	—	*
63.2	205	††	100.0	††	*
65.8	493	17.6	100.0	55 10 10	*
63.4	625	15.5	100.0	62 15 5	*
66.2	560	16.0	80.7	71 0 1	*
60.6	491	19.4	99.2	62 3 7	*
77.2	1,758	19.1	60.7	84 14 4	*
85.5	1,869	19.5	64.0	92 4 4	*
82.9	1,800	19.7	62.9	95 5 1	*
89.7	2,289	20.4	52.6	88 9 8	*
90.6	1,519	34.8	57.8	80 6 1	*
89.9	1,597	32.9	62.2	92 7 4	*

* No Out-Patient Department.

** No figures available.

TABLE No. 1—(continued)

No.	NAME OF HOSPITAL	Year	Total Bed Complement	Average No. of Beds Available Daily	Average No. of Beds Occupied Daily
OTHER INSTITUTIONS—(continued)					
58	<i>Wicklow:</i> Meath Hospital Convalescent Home ...	1933	14	14.0	9.1
		1934	14	14.0	9.8
		1935	14	14.0	8.9
		1936	14	14.0	6.7
		1937	14	14.0	8.1
		1938	14	13.0	9.0
59	<i>Cork:</i> Clifton Convalescent Home ...	1933	35	33.0	19.0
		1934	35	35.0	25.0
		1935	35	35.0	23.9
		1936	35	35.0	21.0
		1937	35	35.0	20.1
		1938	35	35.0	19.7
60	St. Patrick's Incurable Hospital	1933	70	70.0	56.7
		1934	70	70.0	60.0
		1935	70	70.0	65.0
		1936	70	70.0	58.0
		1937	70	70.0	65.3
		1938	70	70.0	67.2
62	<i>Dublin:</i> Catholic Institution for the Deaf and Dumb.	1933	370	370.0	362.0
		1934	362	362.0	349.0
		1935	362	362.0	338.0
		1936	382	382.0	339.8
		1937	382	382.0	348.4
		1938	382	382.0	349.1
63	St. Augustine's Colony for Mental Defectives.	1933	**	—	—
		1934	**	—	—
		1935	80	80.0	41.0
		1936	80	80.0	73.0
		1937	80	80.0	79.0
		1938	116	88.0	86.8

** No figures available.

Percentage Occupancy	Total No. Treated to Conclusion	Average Duration of each Patient in Hospital (Days)	Percentage of Free Patients (Paying 10/- or Under)	Cost per Occupied Bed per Annum	Out-Patients' Attendances
				£ s. d.	
65.0	228	14.6	76.9	83 7 4	*
70.0	259	13.8	68.4	77 8 1	*
63.6	255	12.7	80.9	80 8 9	*
47.9	183	13.5	89.6	107 13 4	*
57.8	237	12.4	77.8	116 8 8	*
69.0	230	14.2	82.9	109 8 4	*
57.6	186	37.3	73.7	89 14 6	*
71.4	240	38.0	87.6	123 7 8	+
68.3	202	42.2	91.6	72 8 2	*
59.9	206	37.3	88.1	103 4 7	*
57.4	208	35.3	88.8	95 15 9	*
56.4	205	35.1	87.7	95 14 10	*
81.0	179	115.6	40.6	71 1 11	3,000 (approx.)
85.7	175	125.1	28.3	95 8 3	**
92.9	222	106.9	24.6	97 6 9	**
82.9	188	112.8	27.6	100 13 2	**
93.3	219	108.8	24.5	103 3 11	**
95.9	208	117.8	29.8	106 11 0	580
97.8	47	—	2.8	32 8 9	*
96.4	39	—	2.9	33 13 9	*
93.4	38	—	2.4	35 15 1	*
89.0	45	—	6.3	34 6 3	*
91.2	52	—	8.0	33 3 3	*
91.4	57	—	6.5	33 15 4	*
—	—	—	—	—	*
—	—	—	—	—	*
51.3	8	—	Nil	71 16 8	*
91.2	11	—	..	54 17 5	*
98.8	8	—	..	59 16 2	*
98.7	9	—	..	57 2 2	*

* No Out-Patient Department.

TABLE No. 2.

HOSPITAL STATISTICS FOR THE YEAR 1937.

TABLE SHOWING CLASSIFICATION OF HOSPITALS, WITH TOTAL, AVAILABLE AND OCCUPIED BEDS AND PERCENTAGE OCCUPANCY.
GENERAL HOSPITALS.

No.	NAME OF HOSPITAL	CLASSIFICATION		Total Bed Complement	Average No. of Beds Available Daily	Average No. of Beds Occupied Daily	Percentage Occupancy
DUBLIN :							
1	Adelaide Hospital	Public Voluntary	Teaching	170	No figures	available	
2	Charitable Infirmary, Jervis Street	"	"	145	126-5	102-1	80-7
3	Drumcondra Hospital	"	Non-teaching	40	No figures	available	
4	Dun's (St Patrick) Hospital	"	Teaching	129	121-6	106-0	87-2
5	Mater Misericordiarum Hospital	Proprietary Voluntary	"	300	249-1	210-8	85-0
6	Meath Hospital and County Dublin Infirmary	Semi-voluntary	"	156	148-0	139-4	87-4
7	Mercer's Hospital	Public Voluntary	"	106	99-2	90-9	91-5
8	Richmond Hospital	Semi-voluntary	"	289	283-2	255-7	90-9
9	Royal City of Dublin Hospital	Public Voluntary	"	160	148-9	138-5	93-0
10	St. Vincent's Hospital	Proprietary Voluntary	"	176	154-0	146-4	95-0
11	Stevens' (Dr.) Hospital	Public Voluntary	"	190	184-9	153-2	82-8
DUBLIN CO. :							
12	Monkstown Hospital	Public Voluntary	Non-teaching	25	25-0	16-1	64-4
13	St. Michael's Hospital, Dun Laoghaire	Proprietary Voluntary	"	42	42-0	46-1	109-8
CORK :							
14	Cobh General Hospital	Public Voluntary	Non-teaching	35	35-0	22-5	64-3
15	Mercy Hospital	Proprietary Voluntary	"	149	149-0	111-2	74-6
16	North Charitable Infirmary	Semi-voluntary	Teaching	120	115-0	103-6	90-0
17	South Charitable Infirmary	"	"	134	126-6	102-0	80-6
18	Victoria Hospital	Public Voluntary	Non-teaching	75	No figures	available	
LIMERICK :							
19	Harrington's Hospital and City of Limerick Infirmary	Public Voluntary	Non-teaching	80	80-0	59-0	73-7
20	Limerick County Infirmary	Semi-voluntary	"	66	66-0	57-0	86-4
21	St. John's Hospital	Public Voluntary	"	69	No figures	available	
GALWAY :							
22	Central Hospital	Rate-aided	Teaching	311	311-0	275-6	88-6
WATERFORD :							
23	County and City Infirmary	Semi-voluntary	Non-teaching	59	53-0	44-7	84-3
24	Martin Hospital, Portlaoigh	Public Voluntary	"	10	10-0	5-2	52-0
LOUTH :							
25	Drogheda Cottage Hospital	Public Voluntary	Non-teaching	22	22-0	18-9	85-9
KILDARE :							
26	Kildare County Infirmary	Semi-voluntary	Non-teaching	39	39-0	30-2	77-4
27	Drogheda Memorial Hospital	Public Voluntary	"	14	14-0	9-6	68-4
KERRY :							
28	Valentia Village Hospital	Public Voluntary	Non-teaching	11	11-0	5-1	45-4
MEATH :							
29	Meath County Infirmary	Semi-voluntary	Non-teaching	41	41-0	35-5	86-6
DONEGAL :							
30	Sheil Hospital, Ballyshannon	Public Voluntary	Non-teaching	36	36-0	29-0	80-5
TOTALS				3,196	2,691-2	2,301-3	85-6

TABLE No. 2—(continued).

SPECIAL HOSPITALS.

No.	NAME OF HOSPITAL	CLASSIFICATION		Total Bed Complement	Average No. of Beds Available Daily	Average No. of Beds Occupied Daily	Percentage Occupancy
MATERNITY:							
31	<i>Dublin:</i> Coombe Lying-in Hospital	Public Voluntary	Teaching	60	58-0	56-5	97-4
32	National Maternity Hospital, Holles Street	"	"	84	84-0	81-6	97-1
33	Rotunda Hospital	"	"	148	137-6	105-3	78-6
34	<i>Cork:</i> County and City of Cork Lying-in Hospital	"	"	25	25-0	23-0	92-0
35	<i>Limerick:</i> Bedford Row Lying-in Hospital	"	Non-teaching	26	26-0	14-4	55-4
36	<i>Waterford:</i> Waterford Maternity Hospital	"	"	12	12-0	4-4	36-6
CHILDREN'S:							
37	<i>Dublin:</i> Children's Hospital, Temple Street	Proprietary Voluntary	Teaching	125	118-0	114-3	98-5
38	National Children's Hospital, Harcourt Street	Public Voluntary	Non-teaching	53	51-4	49-0	77-8
39	Teach Utaim	"	"	62	62-0	57-3	92-4
CANCER:							
40	<i>Dublin:</i> St. Anne's Hospital	Proprietary Voluntary	Teaching	59	57-0	44-7	78-4
41	City of Dublin Skin and Cancer Hospital	Public Voluntary	Non-teaching	56	56-0	44-7	79-8
EYE AND EAR:							
42	<i>Dublin:</i> Royal Victoria Eye and Ear Hospital	Public Voluntary	Teaching	134	134-0	107-9	80-5
43	<i>Cork:</i> Eye, Ear and Throat Hospital	"	"	48	48-0	34-1	71-0
ORTHOPAEDIC:							
44	<i>Dublin:</i> Incorporated Orthopaedic Hospital of Ireland	Public Voluntary	Teaching	77	75-0	68-2	90-9
45	St. Mary's Open-Air Orthopaedic Hospital, Cappagh	Proprietary Voluntary	Non-teaching	240	240-0	243-7	101-5
46	<i>Wexmouth:</i> St. Joseph's Orthopaedic Hospital, Coole	"	"	119	119-0	123-6	103-9
FEVER:							
47	<i>Dublin:</i> Fever Hospital and House of Recovery	Rate-aided	Teaching	298	No figures available		
48	<i>Cork:</i> Fever Hospital and House of Recovery	"	Non-teaching	110	61-4	40-6	66-1
TUBERCULOSIS:							
49	<i>Dublin:</i> Our Lady of Lourdes Hospital	Proprietary Voluntary	Non-teaching	92	92-0	85-5	92-9
50	Peamount Sanatorium	Public Voluntary	"	342	342-0	331-9	97-1
51	<i>Wicklow:</i> Royal National Hospital for Consumption for Ireland	"	"	123	123-0	119-5	97-1
52	Countess of Wicklow Memorial Hospital	"	"	56	55-0	53-3	96-9
OTHER INSTITUTIONS:							
53	<i>Dublin:</i> Incorporated Dental Hospital of Ireland	Public Voluntary	Teaching	(50 Chairs)	—	—	—
54	<i>Cork:</i> Cork Dental Hospital	"	"	(14 Chairs)	—	—	—
55	<i>Dublin:</i> Beaumont Convalescent Home	Proprietary Voluntary	Non-Teaching	92	92-0	55-0	59-8
56	Cheeverstown Convalescent Home	Public Voluntary	"	43	37-0	24-5	66-2
57	Linden Convalescent Home	Proprietary Voluntary	"	160	160-0	145-0	90-6
58	<i>Wicklow:</i> Meath Hospital Convalescent Home	Semi-voluntary	"	14	14-0	8-1	57-8
59	<i>Cork:</i> Clifton Convalescent Home	Public Voluntary	"	35	35-0	20-1	57-4
60	<i>Dublin:</i> St. Patrick's Incurable Hospital	Proprietary Voluntary	"	70	70-0	65-3	93-3
61	St. Patrick's Guild / St. Patrick's Home	Public Voluntary	"	21	19-0	17-1	89-8
62	St. Patrick's Infant Hospital	"	"	40	32-0	24-6	76-9
63	Catholic Institution for the Deaf and Dumb	"	"	382	382-0	348-4	91-2
64	St. Augustine's Colony for Mental Defectives	Proprietary Voluntary	"	80	80-0	79-0	98-8
	Our Lady's Hospice for the Dying	"	"	114	114-0	99-4	87-2
TOTALS—Special Hospitals ...				3,400	3,011-3	2,683-0	89-1
TOTALS—General Hospitals ...				3,196	2,691-2	2,301-3	85-6
GRAND TOTALS ...				6,596	5,702-5	4,984-3	87-4

TABLE No. 3.

HOSPITAL STATISTICS FOR THE YEAR 1937.

TABLE SHOWING ADMISSIONS DURING THE YEAR AND AVERAGE DURATION OF EACH PATIENT IN HOSPITAL.
GENERAL HOSPITALS.

No.	NAME OF HOSPITAL	No. of Patients in Hospital at beginning of Year	No. of Patients Admitted during the Year	No. of Patients in Hospital at end of Year	Average Duration of each Patient in Hospital (Days)
DUBLIN :					
1	Adelaide Hospital		No figures	available	
2	Charitable Infirmary, Jervis Street	89	1,758	93	21.3
3	Drumcondra Hospital		No figures	available	
4	Dun's (Sir Patrick) Hospital	82	1,726	109	22.7
5	Mater Misericordiae Hospital	150	3,989	158	19.3
6	Meath Hospital and County Dublin Infirmary	133	1,737	126	27.1
7	Mercer's Hospital	79	1,358	76	24.4
8	Richmond Hospital	203	3,781	240	24.9
9	Royal City of Dublin Hospital	117	2,267	120	22.3
10	St. Vincent's Hospital	140	2,733	149	19.6
11	Steevens' (Dr.) Hospital	148	2,392	141	23.3
DUBLIN CO. :					
12	Monkstown Hospital	9	580	16	10.3
13	St. Michael's Hospital, Dun Laoghaire	34	884	31	19.0
CORK :					
14	Cobh General Hospital	24	141	20	56.6
15	Mercy Hospital	80	2,110	90	19.3
16	North Charitable Infirmary	82	1,654	101	23.1
17	South Charitable Infirmary	81	2,032	98	18.5
18	Victoria Hospital		No figures	available	
LIMERICK :					
19	Barrington's Hospital and City of Limerick Infirmary	40	1,827	51	11.9
20	Limerick County Infirmary	25	1,120	39	18.8
21	St. John's Hospital		No figures	available	
GALWAY :					
22	Central Hospital	263	5,324	328	19.1
WATERFORD :					
23	County and City Infirmary	40	894	35	18.1
24	Martin Hospital, Portlaw	4	52	1	21.3
LOUTH :					
25	Drogheda Cottage Hospital	14	254	14	27.2
KILDARE :					
26	Kildare County Infirmary	20	521	27	21.8
27	Drogheda Memorial Hospital	4	167	5	18.9
KERRY :					
28	Valentia Village Hospital	6	92	5	20.0
MEATH :					
29	Meath County Infirmary	28	556	42	23.0
DONEGAL :					
30	Sheil Hospital, Ballyshannon	34	420	25	24.7
TOTALS		1,935	40,369	2,140	20.9

TABLE No. 3 (continued).

SPECIAL HOSPITALS.

J. V. DEAT

No.	NAME OF HOSPITAL	No. of Patients in Hospital at beginning of Year	No. of Patients Admitted during the Year	No. of Patients in Hospital at end of Year	Average Duration of each Patient in Hospital (Days)
MATERNITY :					
31	<i>Dublin :</i> Coombe Lying-in Hospital ...	57	1,904	50	10.8
32	National Maternity Hospital, Holles Street ...	64	3,226	66	9.2
33	Rotunda Hospital ...	77	4,011	84	9.6
34	<i>Cork :</i> County and City of Cork Lying-in Hospital ...	19	656	12	12.7
35	<i>Limerick :</i> Bedford Row Lying-in Hospital	17	476	15	11.0
36	<i>Waterford :</i> Waterford Maternity Hospital ...	5	138	4	11.6
CHILDREN'S :					
37	<i>Dublin :</i> Children's Hospital, Temple Street	113	2,363	112	17.9
38	National Children's Hospital, Harcourt Street ...	—	966	35	15.7
39	Teach Ullain ...	59	554	47	36.8
CANCER :					
40	<i>Dublin :</i> St. Anne's Hospital ...	29	942	31	17.4
41	City of Dublin Skin and Cancer Hospital ...	41	557	39	29.2
EYE AND EAR :					
42	<i>Dublin :</i> Royal Victoria Eye and Ear Hospital ...	80	3,095	81	12.7
43	<i>Cork :</i> Eye, Ear and Throat Hospital	16	930	10	13.3
ORTHOPAEDIC :					
44	<i>Dublin :</i> Incorporated Orthopaedic Hospital of Ireland ...	69	128	69	194.4
45	St. Mary's Open Air Orthopaedic Hospital, Cappagh ...	236	297	229	292.6
46	<i>Westmeath :</i> St. Joseph's Orthopaedic Hospital, Coole ...	125	77	119	543.4
FEVER :					
47	<i>Dublin :</i> Fever Hospital and House of Recovery ...	—	No figures available	—	—
48	<i>Cork :</i> Fever Hospital and House of Recovery ...	27	463	33	32.4
TUBERCULOSIS :					
49	<i>Dublin :</i> Our Lady of Lourdes Hospital ...	80	143	84	224.6
50	Peamount Sanatorium ...	315	506	296	230.7
51	<i>Wicklow :</i> Royal National Hospital for Consumption for Ireland ...	114	288	120	154.7
52	Countess of Wicklow Memorial Hospital ...	51	127	48	149.8
OTHER INSTITUTIONS :					
53	<i>Dublin :</i> Incorporated Dental Hospital of Ireland ...	—	Not applicable	—	—
54	<i>Cork :</i> Cork Dental Hospital ...	—	Not applicable	—	—
55	<i>Dublin :</i> Beaumont Convalescent Home	51	764	48	26.2
56	Cheeverstown Convalescent Home	—	560	—	16.0
57	Linden Convalescent Home ...	110	1,537	128	34.8
58	<i>Wicklow :</i> Meath Hospital Convalescent Home	3	234	—	12.4
59	<i>Cork :</i> Clifton Convalescent Home ...	18	205	15	35.3
60	St. Patrick's Incurable Hospital	63	223	67	108.8
61	<i>Dublin :</i> St. Patrick's Guild : St. Patrick's Home ...	15	179	16	35.0
	St. Patrick's Infant Hospital	25	88	30	108.3
62	Catholic Institution for the Deaf and Dumb ...	331	67	346	—
63	St. Augustine's Colony for Mental Defectives ...	79	7	78	—
64	Our Lady's Hospice for the Dying	104	362	104	100.2
TOTALS—Special Hospitals ...		2,393	26,073	2,410	31.7
TOTALS—General Hospitals...		1,938	40,369	2,140	20.9
GRAND TOTALS ...		4,328	66,442	4,550	26.3

