

# **CANCER MORTALITY IN IRELAND, 1976-1986**

**COLIN SEYMOUR PhD  
BERNADETTE HERITY MD, DPH, FFCMI  
MICHAEL J. MORIARTY MD, FRCPI, FRCR**

Sponsored by

**HEALTH PROMOTION UNIT**

**Department of Health**

Department of Health	
A/c No	11285
Sh	HQE SGC
Library	Unit

# CANCER MORTALITY IN IRELAND, 1976-1986

COLIN SEYMOUR PhD  
BERNADETTE HERITY MD, DPH, FFCMI  
MICHAEL J. MORIARTY MD, FRCPI, FRCR



Sponsored by

HEALTH PROMOTION UNIT

Department of Health

## **ACKNOWLEDGEMENTS**

We are grateful to the Directors of the St. Luke's Cancer Research Fund for support for this project. Additional funding was received from EC sources (Contracts B16092 and 184 IRL). Statistical data were kindly provided by the staff of the Central Statistics Office Dublin and original outline maps were supplied by Léaráid Maps. We are also indebted to Mr. Sean Benton and the staff of the Health Promotion Unit, Department of Health, for advice and support.

# CONTENTS

ACKNOWLEDGEMENTS.....	2
INTRODUCTION .....	4
TABLES AND GRAPHS OF CANCER MORTALITY .....	5-24
MAPS OF CANCER MORTALITY.....	25-31
TABLES OF SMRs FOR ALL CANCERS/COUNTY.....	33-39
APPENDIX 1 — DEATH CERTIFICATE AND DEATH REGISTRATION FORMS.....	41-44
APPENDIX 2 — COUNTY AND COUNTY BORO POPULATIONS.....	45-48
REFERENCES .....	Inside back cover

## INTRODUCTION

The purpose of this volume is to bring together in easily accessible form up-to-date mortality statistics for cancer for the Republic of Ireland. Because of small numbers in many of the malignant neoplasms studied rates and standardised mortality ratios (SMR) have been calculated for the 11 year period 1976-86. Basic data only is presented: it is planned to produce a further volume with detailed analysis of the patterns of cancer seen, discussion of certification and coding of cancer for statistical purposes and comparison with statistics from other countries.

## SOURCES OF DATA

The primary source of data for mortality statistics is the death certificate, a copy of which is shown as Appendix I. The cause of death registered for statistical purposes is the underlying cause of death and is that diagnosis described on the death certificate as antecedent cause of death; if a malignant neoplasm is recorded as antecedent cause of death under (b) or (c) that death is included in national mortality statistics as being due to cancer. The registration and coding of cause of death is carried out in the Registrar General's Office; all deaths are coded according to the rubric of the International Classification of Diseases (1,2) and are assigned three or four digit codes, — in the case of malignant neoplasms ICD 140-208.9 inclusive. Statistics are collated and analysed in the Central Statistics Office (CSO) and annual reports on vital statistics are published; the most recent report available to the authors was for 1985 (3).

## METHODS

The CSO made available five items of information on all deaths coded as being due to cancer (ICD 140-208.9) for 1976-86 inclusive, namely year of death, sex, age and county of residence and ICD code. It is not possible to identify any individual from these data. The Republic of Ireland is divided into 32 county and county borough administrative areas and these were taken as the basic units for statistical purposes in this study. Average mortality rates per 100,000 population by sex and age groups were calculated for each malignant neoplasm and are shown in tabular (Tables 1-38) and graphic (Figures 1-38) form for the years 1976-1986. In addition SMRs were calculated for males and females for each county and county borough. SMR incorporates an adjustment for the age structure of the population unit and allows comparisons to be made between counties/county boroughs and with the country as a whole. The SMR for the Republic of Ireland is taken to be 100, therefore all areas with SMRs below 100 have age-standardised death rates below the national rate and those with SMRs greater than 100 have age standardised death rates higher than the national rate. All SMRs are shown in Tables 39-58 and are also presented in geographical maps which represent the range of SMRs by gradation of shading.

## QUALITY OF DATA

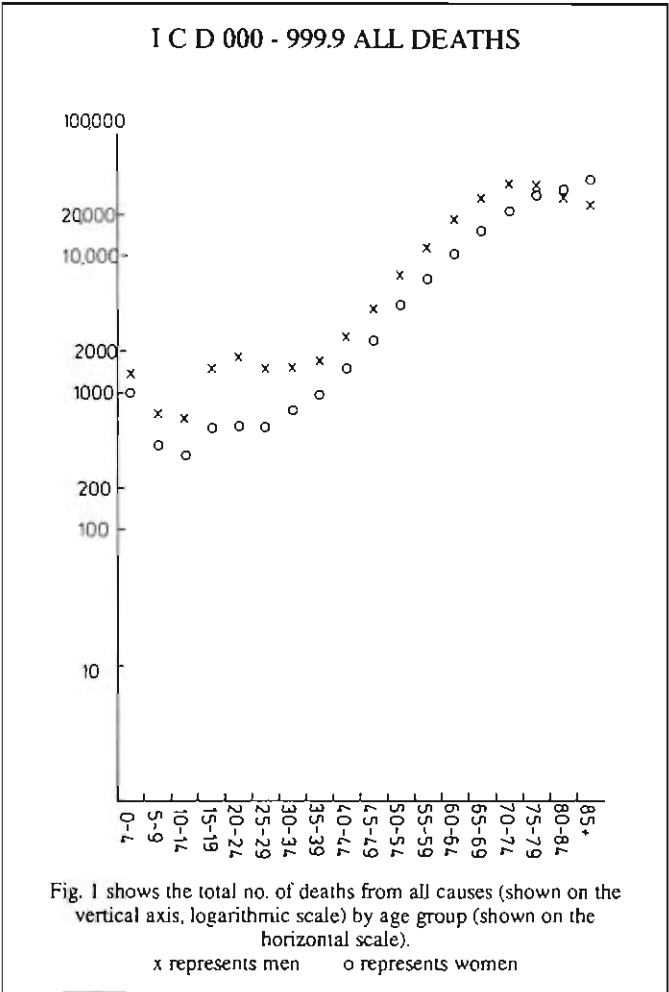
In interpreting these data certain caveats must be borne in mind:

1. Mortality data are based on death certification and there is always concern regarding the validity of cause of death recorded on the death certificate; a number of studies (4,5) have shown that the cause of death recorded may be debatable. However, cancer has been shown to be one of the more reliable diagnoses on death certificates.
2. Hospitals may cause clustering of cancer deaths if the area of residence of the decedent is not correctly recorded. For instance persons with cancer may come to reside temporarily with a relative in order to be near a hospital for regular therapy.
3. The 1981 Census of Population was used to calculate rates and SMRs and there may have been some population changes since then. However, major shifts of population would be required to substantially affect the results shown.
4. Mortality data do not directly reflect cancer incidence particularly for cancers with a good prognosis.

**TABLES AND GRAPHS OF CANCER  
MORTALITY, 1976-86, BY SITE, SEX AND  
AGE GROUP**

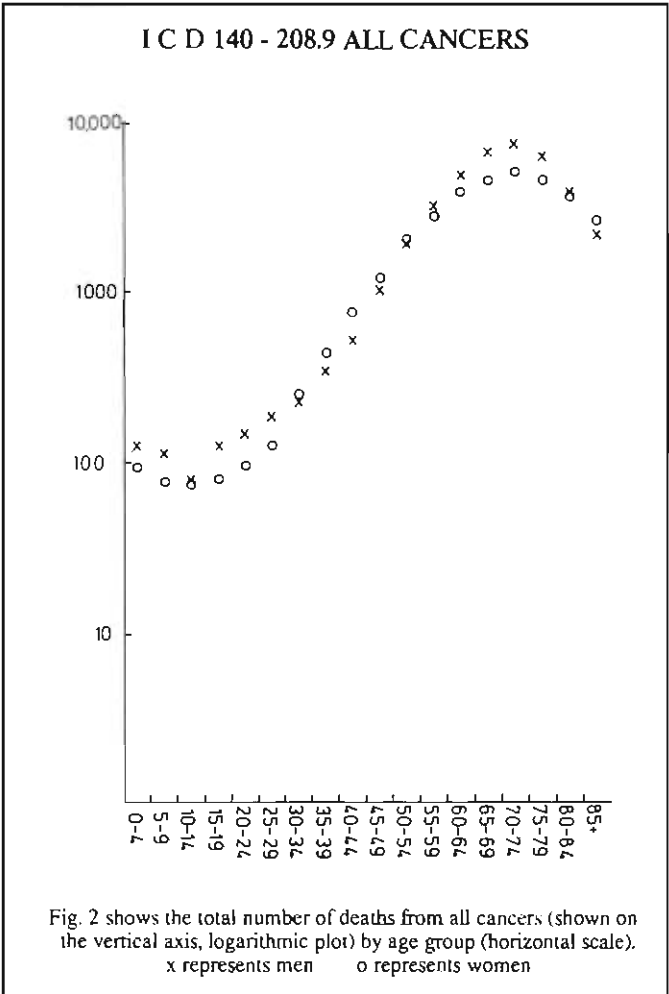
**Table 1**  
**NO. OF DEATHS AND AVERAGE ANNUAL DEATH RATE PER HUNDRED THOUSAND FROM ALL CAUSES BY SEX AND AGE GROUP**

Age Range	MALE		FEMALE	
	No. of deaths	Rate per 100,000	No. of deaths	Rate per 100,000
0 - 4	1384	69.55	1051	55.55
5 - 9	716	36.36	419	22.36
10 - 14	646	33.55	353	19.36
15 - 19	1523	83.09	565	32.18
20 - 24	1793	116.09	583	39.09
25 - 29	1481	108.27	568	42.45
30 - 34	1454	111.73	732	58.55
35 - 39	1742	159.55	969	93.18
40 - 44	2537	270.36	1545	174.27
45 - 49	3991	466.45	2450	300.73
50 - 54	7231	872.73	4274	495.27
55 - 59	11902	1476.36	6688	1365.36
60 - 64	18258	2441.73	10707	1364.55
65 - 69	26197	3703.45	15532	2028.36
70 - 74	33058	6211.82	22364	3712.91
75 - 79	32132	10013.27	27323	6323.73
80 - 84	26450	15598.73	30422	11041.82
85 and over	22978	26408.45	35863	21628.36
TOTAL	195,473	1027.54	162,408	861.36



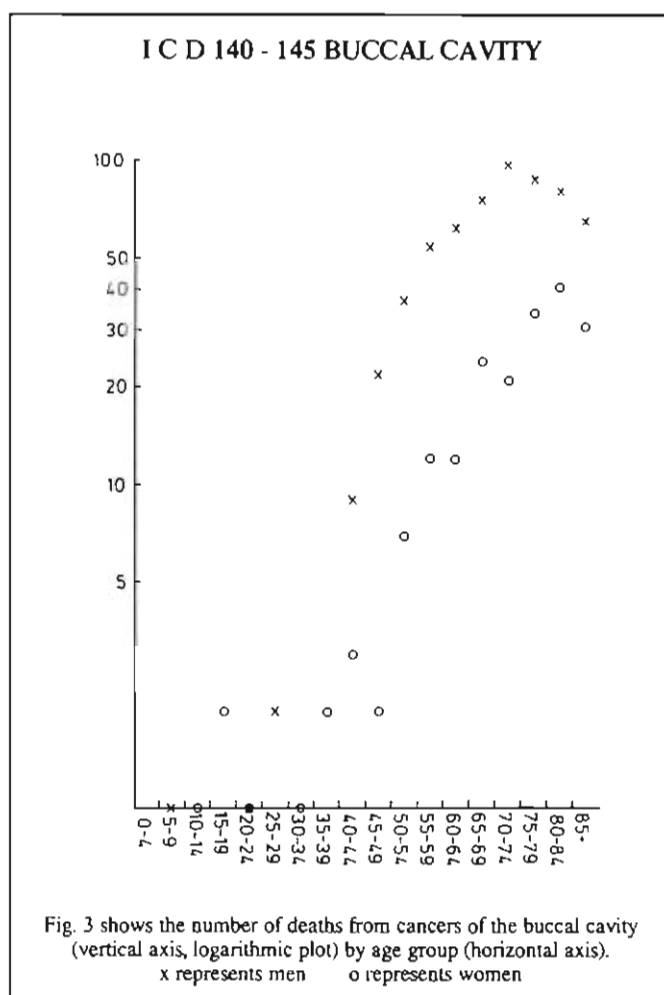
**Table 2**  
**NO. OF DEATHS AND AVERAGE ANNUAL DEATH RATE PER HUNDRED THOUSAND FROM ALL CANCERS BY SEX AND AGE GROUP**

Age Range	MALE		FEMALE	
	No. of deaths	Rate per 100,000	No. of deaths	Rate per 100,000
0 - 4	132	6.64	94	5.00
5 - 9	114	5.82	79	4.18
10 - 14	79	4.09	74	4.09
15 - 19	124	6.73	80	4.55
20 - 24	145	9.36	96	6.45
25 - 29	182	13.27	126	9.45
30 - 34	224	17.18	255	20.36
35 - 39	336	30.73	431	41.45
40 - 44	507	54.00	743	83.82
45 - 49	988	115.45	1198	147.00
50 - 54	1879	226.82	1986	242.82
55 - 59	3208	407.00	2719	323.91
60 - 64	4825	648.91	3800	484.55
65 - 69	6612	934.73	4520	590.27
70 - 74	7296	1371.00	5002	830.45
75 - 79	6103	1901.91	4557	1054.73
80 - 84	3837	2262.82	3598	1305.91
85 and over	2108	2422.73	2623	1581.91
TOTAL	38,726	203.55	31,981	169.64



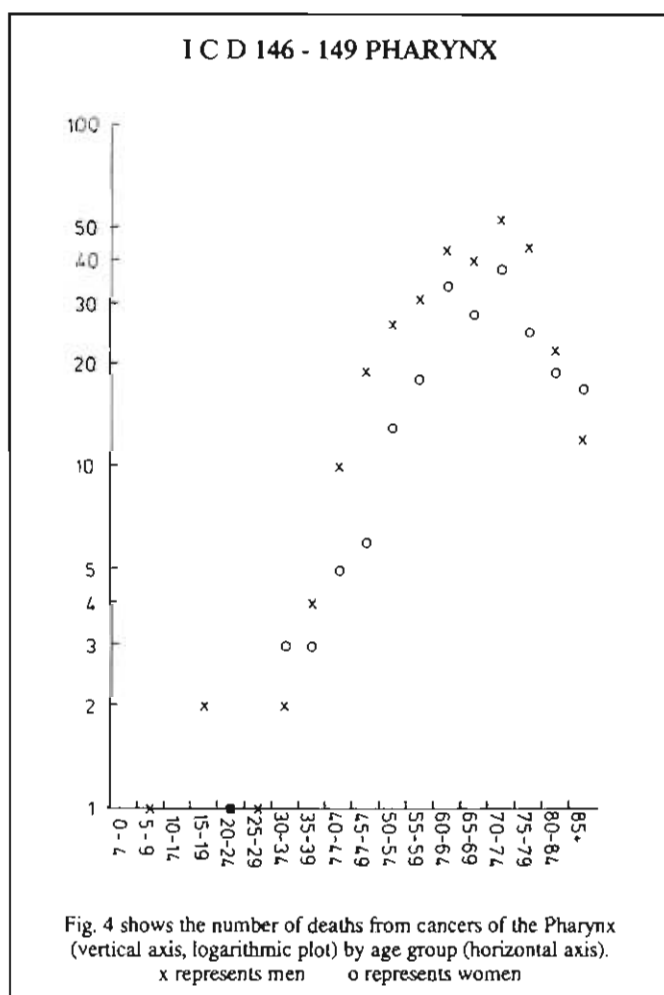
**Table 3**  
NO. OF DEATHS AND AVERAGE ANNUAL DEATH RATE PER HUNDRED THOUSAND FROM CANCER OF BUCCAL CAVITY BY SEX AND AGE GROUP

Age Range	MALE		FEMALE	
	No. of deaths	Rate per 100,000	No. of deaths	Rate per 100,000
5 - 9	1	0.055	—	—
10 - 14	—	—	1	0.055
15 - 19	—	—	2	0.118
20 - 24	1	0.064	1	0.064
25 - 29	2	0.145	—	—
30 - 34	—	—	1	0.082
35 - 39	2	0.182	2	0.191
40 - 44	9	0.955	3	0.336
45 - 49	22	2.564	2	0.245
50 - 54	37	4.464	7	0.854
55 - 59	54	6.691	12	1.427
60 - 64	62	8.291	12	1.527
65 - 69	76	10.745	24	3.136
70 - 74	97	18.227	21	3.5
75 - 79	88	27.427	34	7.873
80 - 84	81	47.773	41	14.882
85 and over	65	74.7	31	18.691
<b>TOTAL</b>	<b>597</b>	<b>3.136</b>	<b>194</b>	<b>1.209</b>



**Table 4**  
NO. OF DEATHS AND AVERAGE ANNUAL DEATH RATE PER HUNDRED THOUSAND FROM CANCER OF PHARYNX BY SEX AND AGE GROUP

Age Range	MALE		FEMALE	
	No. of deaths	Rate per 100,000	No. of deaths	Rate per 100,000
5 - 9	1	0.055	—	—
10 - 14	—	—	—	—
15 - 19	2	0.109	—	—
20 - 24	1	0.064	1	0.064
25 - 29	1	0.073	—	—
30 - 34	2	0.155	3	0.245
35 - 39	4	0.364	3	0.291
40 - 44	10	1.064	5	0.564
45 - 49	19	2.218	6	0.736
50 - 54	26	3.136	13	1.591
55 - 59	31	3.845	18	2.145
60 - 64	43	5.755	34	4.336
65 - 69	40	5.655	28	3.655
70 - 74	53	9.955	38	6.31
75 - 79	44	13.709	25	5.782
80 - 84	22	12.973	19	6.9
85 and over	12	13.791	17	10.255
<b>TOTAL</b>	<b>311</b>	<b>1.636</b>	<b>210</b>	<b>1.118</b>





**Table 5**  
**NO. OF DEATHS AND AVERAGE ANNUAL DEATH**  
**RATE PER HUNDRED THOUSAND FROM CANCER**  
**OF OESOPHAGUS BY SEX AND AGE GROUP**

Age Range	MALE		FEMALE	
	No. of deaths	Rate per 100,000	No. of deaths	Rate per 100,000
20 - 24	—	—	1	0.064
25 - 29	1	0.073	1	0.073
30 - 34	4	0.3	1	0.082
35 - 39	13	1.191	7	0.673
40 - 44	14	1.491	14	1.582
45 - 49	48	5.61	19	2.327
50 - 54	78	9.418	50	6.109
55 - 59	147	18.236	70	8.336
60 - 64	193	25.809	130	16.573
65 - 69	232	32.8	156	20.373
70 - 74	245	46.036	168	27.891
75 - 79	207	64.51	202	46.755
80 - 84	147	86.691	149	54.082
85 and over	79	90.791	100	60.31
<b>TOTAL</b>	<b>1,408</b>	<b>7.4</b>	<b>1,068</b>	<b>5.664</b>

**Table 6**  
**NO. OF DEATHS AND AVERAGE ANNUAL DEATH**  
**RATE PER HUNDRED THOUSAND FROM CANCER**  
**OF STOMACH BY SEX AND AGE GROUP**

Age Range	MALE		FEMALE	
	No. of deaths	Rate per 100,000	No. of deaths	Rate per 100,000
15 - 19	1	0.055	—	—
20 - 24	2	0.127	1	0.064
25 - 29	7	0.509	7	0.527
30 - 34	16	1.227	17	1.364
35 - 39	38	3.482	18	1.727
40 - 44	51	5.436	19	2.145
45 - 49	88	10.282	33	4.055
50 - 54	166	20.364	84	10.273
55 - 59	292	36.218	141	16.8
60 - 64	475	63.527	201	25.636
65 - 69	622	78.845	339	44.273
70 - 74	780	146.564	440	73.045
75 - 79	639	199.136	473	109.473
80 - 84	392	231.182	427	154.982
85 and over	190	218.364	357	215.3
<b>TOTAL</b>	<b>3,759</b>	<b>19.764</b>	<b>2,557</b>	<b>13.564</b>

**I C D 150 OESOPHAGUS**

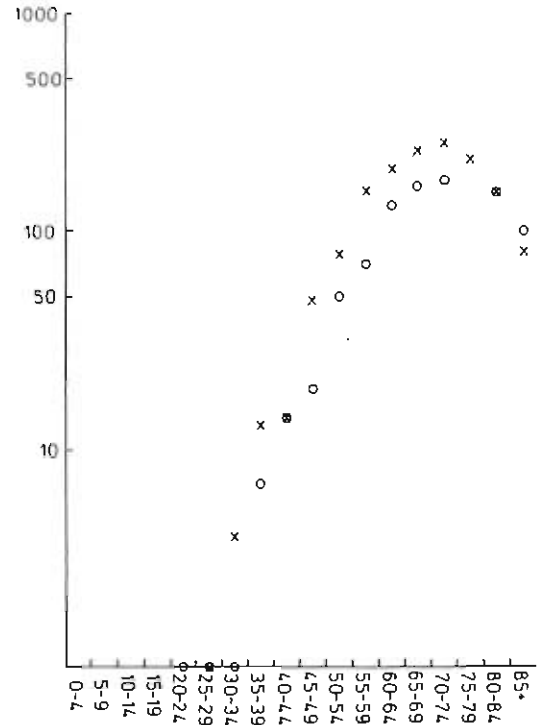


Fig. 5 shows the number of deaths from cancer of the oesophagus (vertical axis, logarithmic plot) by age group (horizontal axis).  
x represents men      o represents women

**I C D 151 STOMACH**

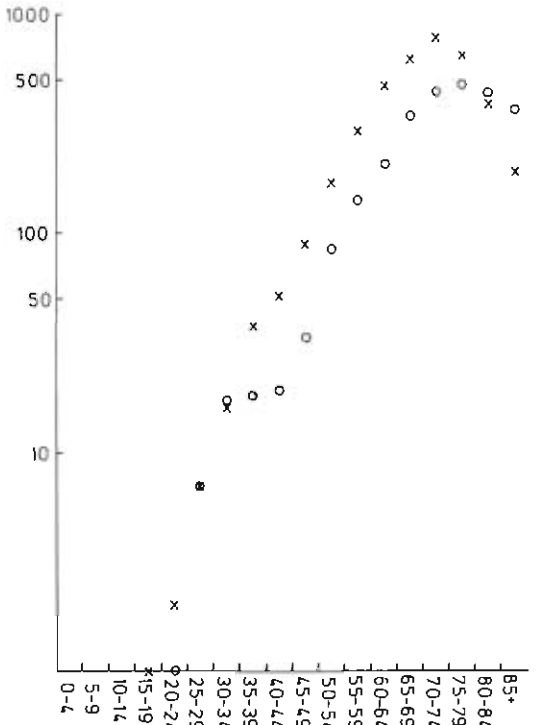
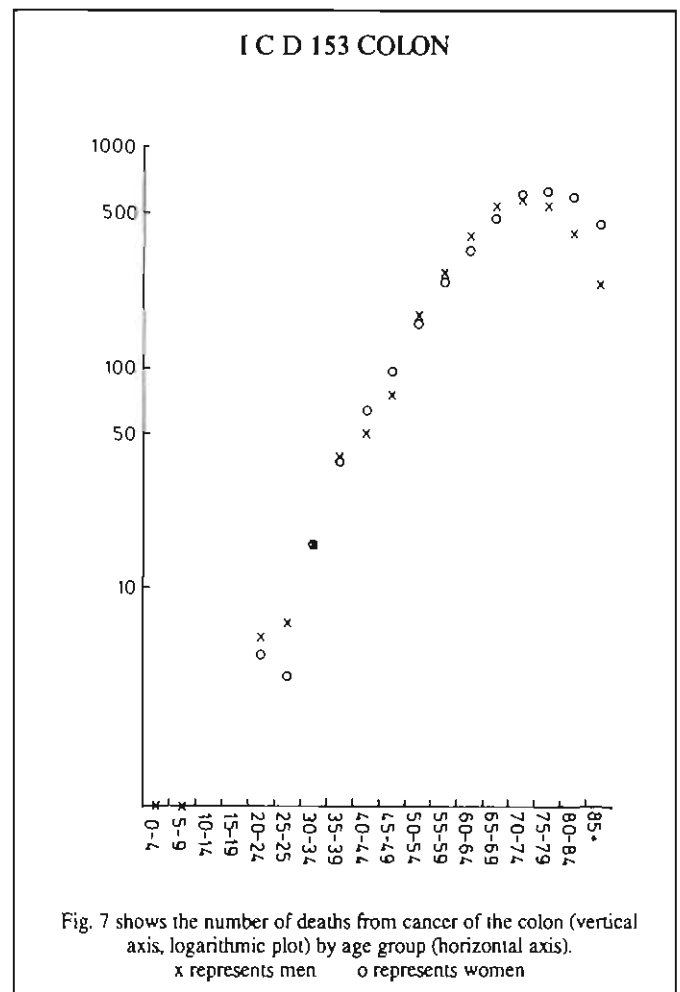


Fig. 6 shows the number of deaths from cancer of the Stomach (vertical axis, logarithmic plot) by age group (horizontal axis).  
x represents men      o represents women

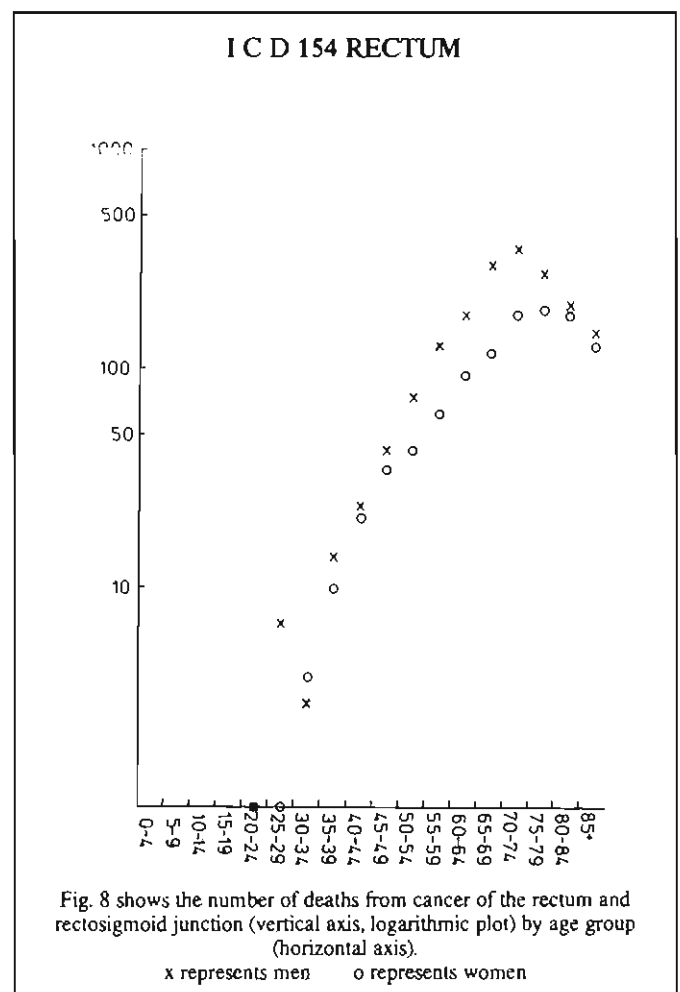
**Table 7**  
**NO. OF DEATHS AND AVERAGE ANNUAL DEATH RATE PER HUNDRED THOUSAND FROM CANCER OF COLON BY SEX AND AGE GROUP**

Age Range	MALE		FEMALE	
	No. of deaths	Rate per 100,000	No. of deaths	Rate per 100,000
0 - 4	1	0.055	—	—
5 - 9	1	0.055	—	—
10 - 14	—	—	—	—
15 - 19	—	—	—	—
20 - 24	6	0.391	5	0.336
25 - 29	7	0.509	4	0.3
30 - 34	16	1.227	16	1.282
35 - 39	40	3.664	38	3.655
40 - 44	51	5.273	65	7.327
45 - 49	78	9.118	98	12.027
50 - 54	178	21.482	166	21.118
55 - 59	279	34.609	252	30.018
60 - 64	409	54.7	350	44.636
65 - 69	563	79.591	487	63.6
70 - 74	598	112.364	609	101.109
75 - 79	564	175.764	650	150.436
80 - 84	422	248.873	614	222.836
85 and over	254	291.918	470	283.455
<b>TOTAL</b>	<b>3,467</b>	<b>18.227</b>	<b>3,824</b>	<b>20.282</b>



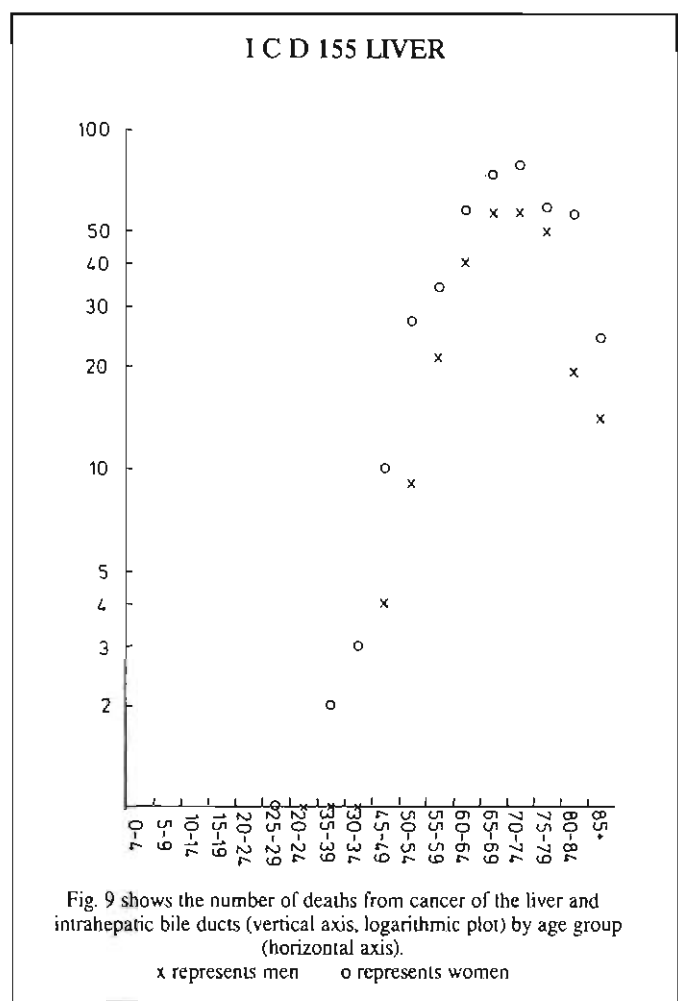
**Table 8**  
**NO. OF DEATHS AND AVERAGE ANNUAL DEATH RATE PER HUNDRED THOUSAND FROM CANCER OF RECTUM AND RECTOSIGMOID JUNCTION BY SEX AND AGE GROUP**

Age Range	MALE		FEMALE	
	No. of deaths	Rate per 100,000	No. of deaths	Rate per 100,000
20 - 24	1	0.064	1	0.064
25 - 29	7	0.509	1	0.073
30 - 34	3	0.227	4	0.318
35 - 39	14	1.282	10	0.964
40 - 44	24	2.555	21	2.364
45 - 49	43	5.027	35	4.3
50 - 54	75	9.055	43	5.255
55 - 59	129	16.0	63	7.509
60 - 64	182	24.336	94	11.991
65 - 69	302	42.691	122	15.664
70 - 74	360	67.645	182	30.218
75 - 79	275	85.7	194	44.909
80 - 84	201	118.536	181	65.691
85 and over	149	171.218	133	80.209
<b>TOTAL</b>	<b>1,765</b>	<b>9.282</b>	<b>1,084</b>	<b>5.745</b>



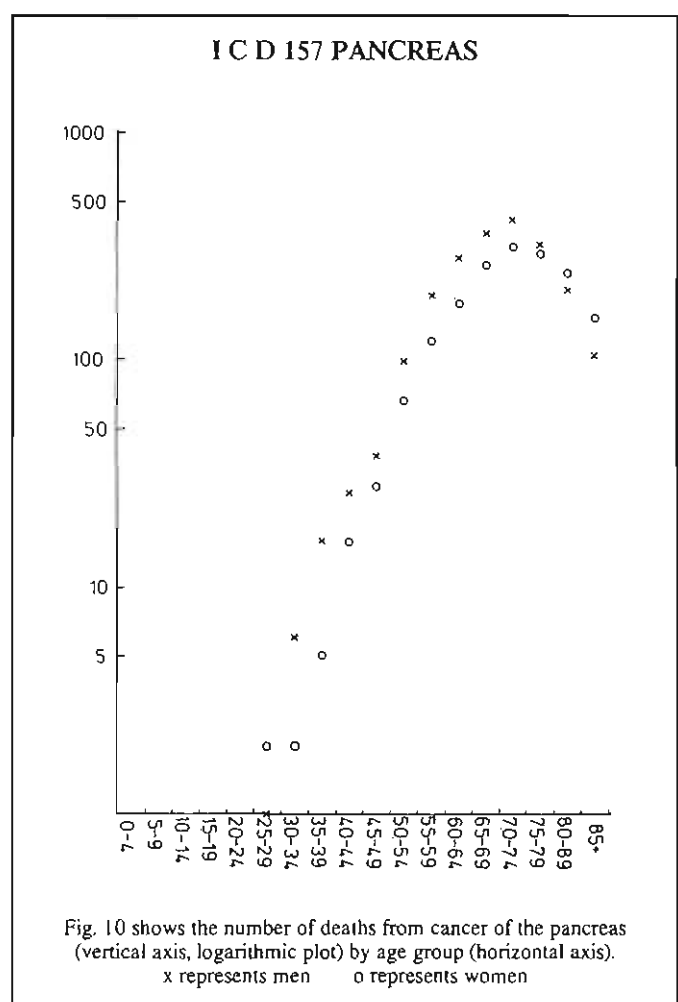
**Table 9**  
**NO. OF DEATHS AND AVERAGE ANNUAL DEATH RATE PER**  
**HUNDRED THOUSAND FROM CANCER OF LIVER AND**  
**INTRAHEPATIC BILE DUCTS BY SEX AND AGE GROUP**

Age Range	MALE		FEMALE	
	No. of deaths	Rate per 100,000	No. of deaths	Rate per 100,000
25 - 29	—	—	1	0.073
30 - 34	1	0.073	—	—
35 - 39	1	0.091	2	0.191
40 - 44	1	0.109	3	0.336
45 - 49	4	0.464	10	1.227
50 - 54	9	1.082	27	3.3
55 - 59	21	2.609	34	4.055
60 - 64	40	5.08	58	7.4
65 - 69	56	7.918	73	9.536
70 - 74	57	10.709	79	13.118
75 - 79	49	15.273	59	13.655
80 - 84	19	11.2	56	20.327
85 and over	14	16.091	24	14.473
<b>TOTAL</b>	<b>272</b>	<b>1.427</b>	<b>426</b>	<b>2.255</b>



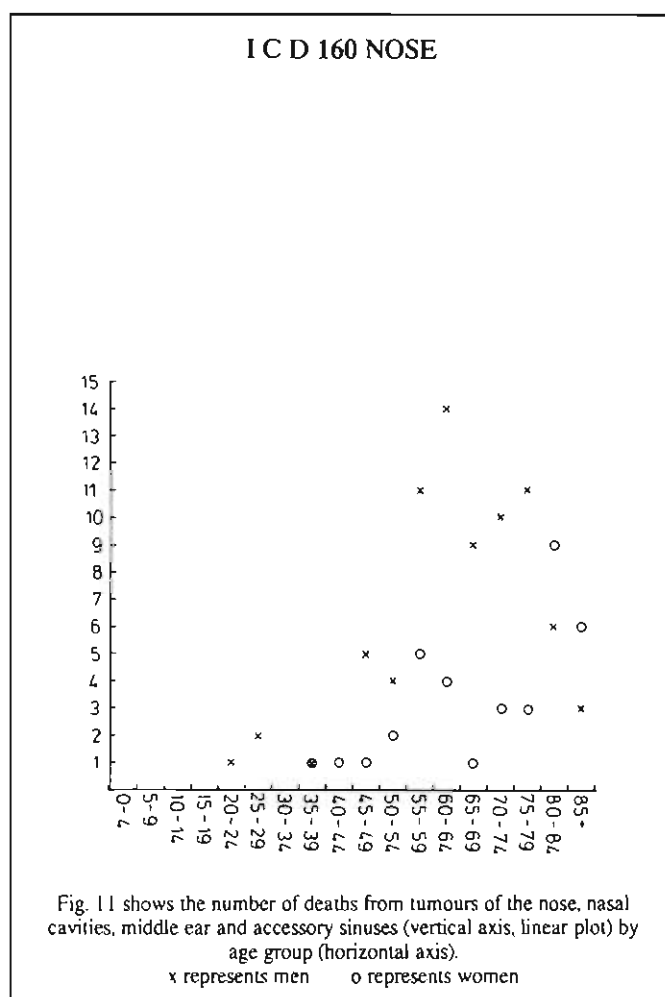
**Table 10**  
**NO. OF DEATHS AND AVERAGE ANNUAL DEATH RATE PER HUNDRED THOUSAND FROM CANCER**  
**OF PANCREAS BY SEX AND AGE GROUP**

Age Range	MALE		FEMALE	
	No. of deaths	Rate per 100,000	No. of deaths	Rate per 100,000
25 - 29	1	0.091	2	0.182
30 - 34	6	0.455	2	0.182
35 - 39	16	1.455	5	0.455
40 - 44	26	2.727	16	1.818
45 - 49	38	4.455	28	3.455
50 - 54	97	11.727	66	8.091
55 - 59	190	23.545	121	14.364
60 - 64	280	37.455	175	22.273
65 - 69	361	51.0	256	33.455
70 - 74	408	76.636	309	51.273
75 - 79	320	99.727	285	66.0
80 - 84	204	120.273	242	87.818
85 and over	106	121.818	154	92.909
<b>TOTAL</b>	<b>2,053</b>	<b>10.818</b>	<b>1,661</b>	<b>6.182</b>



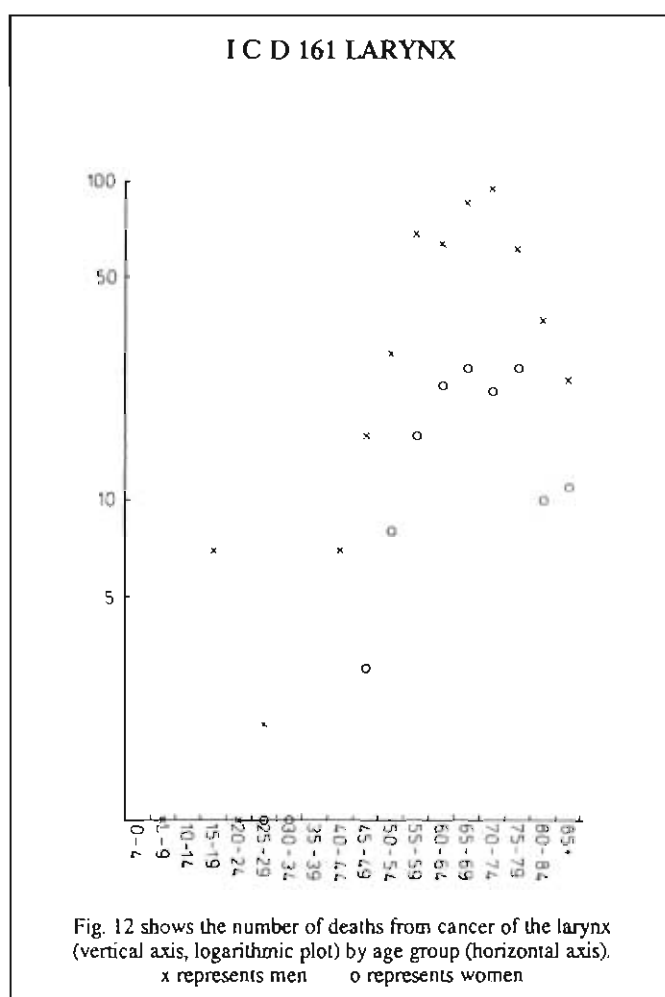
**Table 11**  
**NO. OF DEATHS AND AVERAGE ANNUAL DEATH RATE PER HUNDRED THOUSAND FROM CANCER OF NOSE, NASAL CAVITIES, MIDDLE EAR AND ACCESSORY SINUSES BY SEX AND AGE GROUP**

Age Range	MALE		FEMALE	
	No. of deaths	Rate per 100,000	No. of deaths	Rate per 100,000
20 - 24	1	0.064	—	—
25 - 29	2	0.145	—	—
30 - 34	—	—	—	—
35 - 39	1	0.091	1	0.1
40 - 44	—	—	1	0.109
45 - 49	5	0.582	1	0.127
50 - 54	4	0.482	2	0.245
55 - 59	11	1.364	5	0.6
60 - 64	14	1.873	4	0.509
65 - 69	9	1.273	1	0.127
70 - 74	10	1.882	3	0.509
75 - 79	11	3.427	3	0.691
80 - 84	6	3.536	9	3.264
85 and over	3	3.445	6	3.618
<b>TOTAL</b>	<b>77</b>	<b>3.136</b>	<b>36</b>	<b>1.209</b>



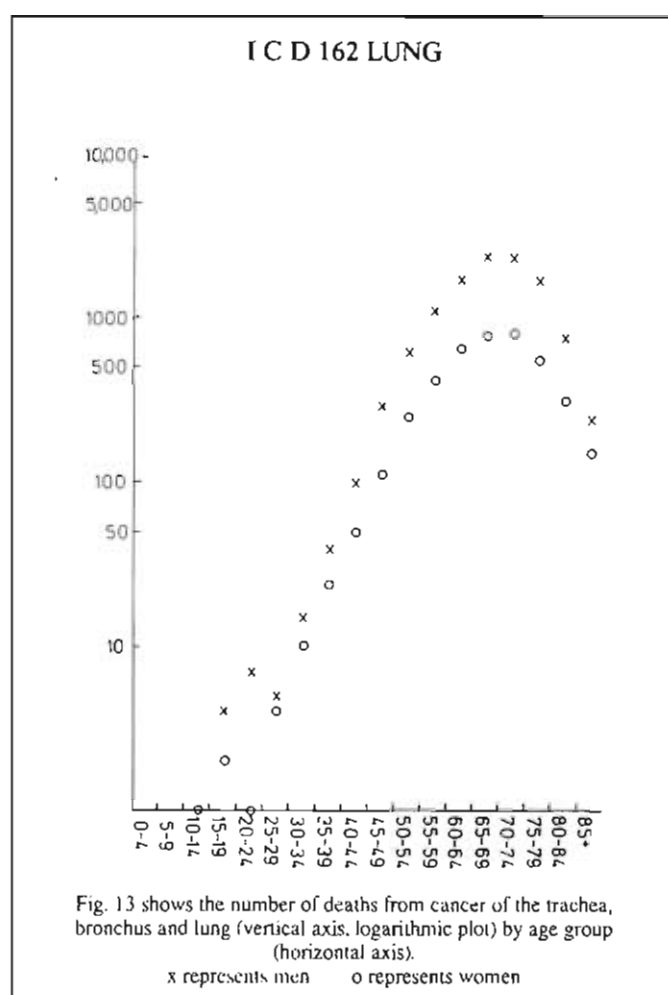
**Table 12**  
**NO. OF DEATHS AND AVERAGE ANNUAL DEATH RATE PER HUNDRED THOUSAND FROM CANCER OF THE LARYNX BY SEX AND AGE GROUP**

Age Range	MALE		FEMALE	
	No. of deaths	Rate per 100,000	No. of deaths	Rate per 100,000
5 - 9	1	0.055	—	—
10 - 14	—	—	—	—
15 - 19	7	0.382	—	—
20 - 24	1	0.064	—	—
25 - 29	2	0.145	1	0.073
30 - 34	—	—	1	0.082
35 - 39	—	—	—	—
40 - 44	7	0.745	—	—
45 - 49	16	1.873	3	0.373
50 - 54	29	3.5	8	0.982
55 - 59	69	8.555	16	1.909
60 - 64	64	8.555	23	2.936
65 - 69	86	12.155	26	3.391
70 - 74	95	17.855	22	3.655
75 - 79	61	19.009	26	6.018
80 - 84	37	21.818	10	3.627
85 and over	24	27.582	11	6.636
<b>TOTAL</b>	<b>499</b>	<b>2.627</b>	<b>147</b>	<b>0.782</b>



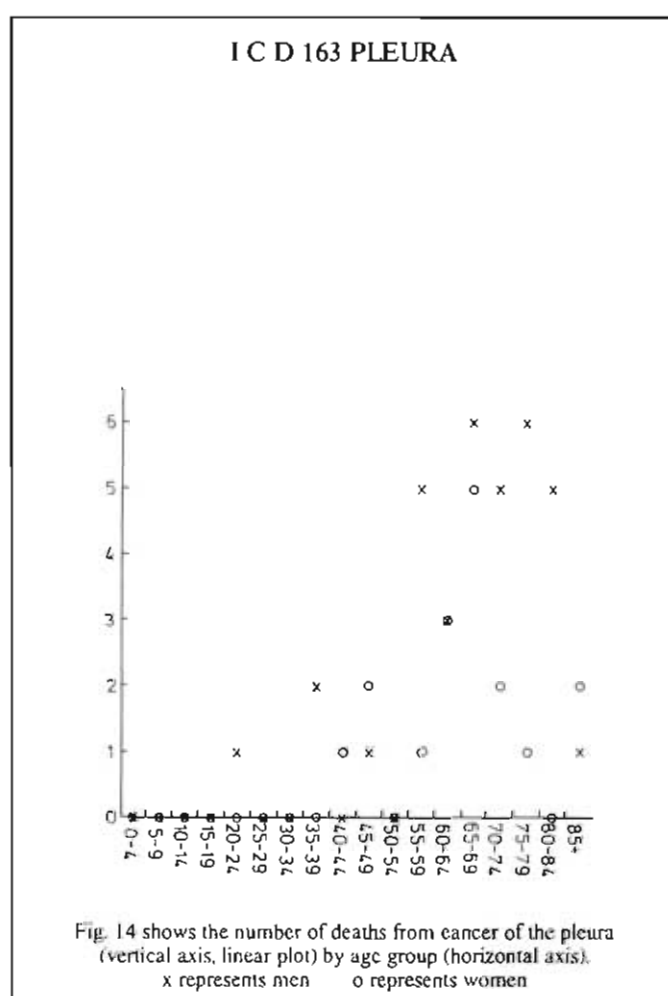
**Table 13**  
NO. OF DEATHS AND AVERAGE ANNUAL DEATH RATE PER  
HUNDRED THOUSAND FROM CANCER OF TRACHEA,  
BRONCHUS AND LUNG BY SEX AND AGE GROUP

Age Range	MALE		FEMALE	
	No. of deaths	Rate per 100,000	No. of deaths	Rate per 100,000
10 - 14	—	—	1	0.091
15 - 19	4	0.182	2	0.091
20 - 24	7	0.455	1	0.091
25 - 29	5	0.364	4	0.273
30 - 34	15	1.182	10	0.818
35 - 39	39	3.545	24	2.273
40 - 44	99	10.545	49	5.545
45 - 49	285	33.273	107	13.091
50 - 54	612	73.909	253	30.909
55 - 59	1114	138.182	411	49.0
60 - 64	1733	231.727	642	81.909
65 - 69	2313	327.0	778	101.636
70 - 74	2243	421.455	789	131.0
75 - 79	1687	525.727	564	130.545
80 - 84	759	447.636	311	112.909
85 and over	236	271.273	150	172.364
<b>TOTAL</b>	<b>11,151</b>	<b>58.636</b>	<b>4,096</b>	<b>21.727</b>



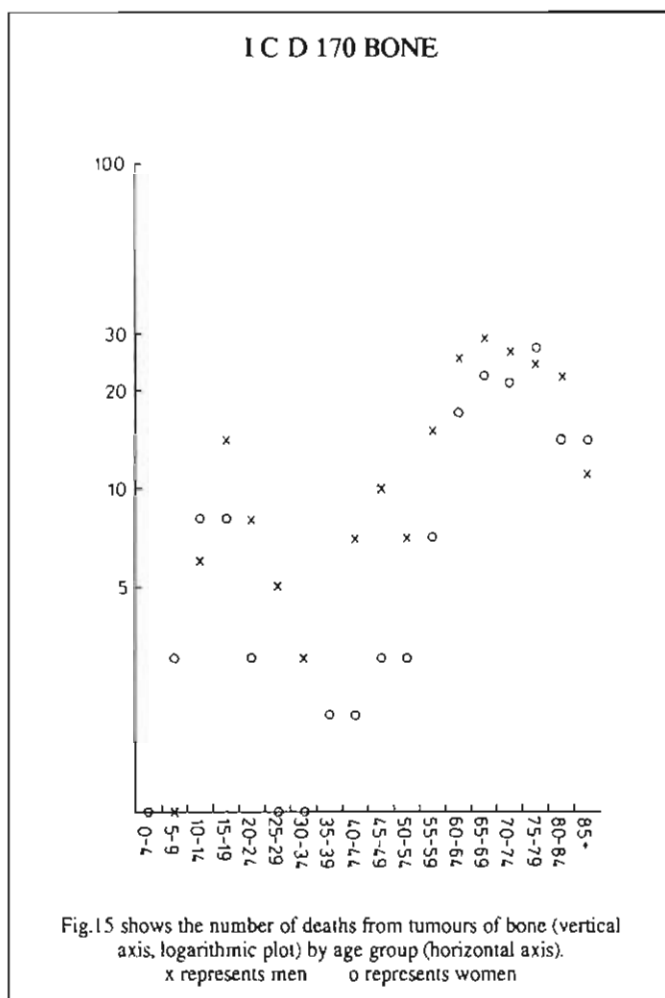
**Table 14**  
NO. OF DEATHS AND AVERAGE ANNUAL DEATH RATE  
PER HUNDRED THOUSAND FROM MALIGNANT  
NEOPLASMS OF PLEURA BY SEX AND AGE GROUP

Age Range	MALE		FEMALE	
	No. of deaths	Rate per 100,000	No. of deaths	Rate per 100,000
20 - 24	1	0.064	—	—
25 - 29	—	—	—	—
30 - 34	—	—	—	—
35 - 39	2	0.182	—	—
40 - 44	—	—	1	0.109
45 - 49	1	0.118	2	0.245
50 - 54	—	—	—	—
55 - 59	5	0.618	1	0.118
60 - 64	3	0.4	3	0.382
65 - 69	6	0.845	5	0.655
70 - 74	5	0.936	2	0.327
75 - 79	6	1.873	1	0.227
80 - 84	5	2.945	—	—
85 and over	1	1.145	2	1.209
<b>TOTAL</b>	<b>35</b>	<b>0.182</b>	<b>17</b>	<b>0.009</b>



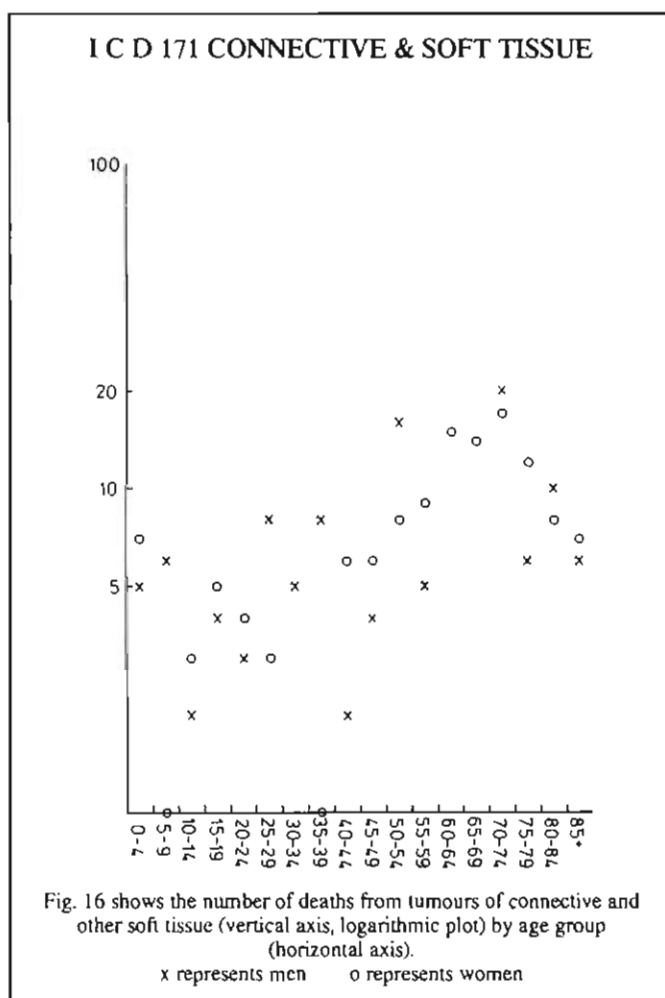
**Table 15**  
**NO. OF DEATHS AND AVERAGE ANNUAL DEATH RATE PER HUNDRED THOUSAND FROM BONE CANCER BY SEX AND AGE GROUP**

Age Range	MALE		FEMALE	
	No. of deaths	Rate per 100,000	No. of deaths	Rate per 100,000
0 - 4	—	—	1	0.055
5 - 9	1	0.055	3	0.164
10 - 14	6	0.309	8	0.436
15 - 19	14	0.764	8	0.455
20 - 24	8	0.518	3	0.2
25 - 29	5	0.364	1	0.073
30 - 34	3	0.227	1	0.082
35 - 39	—	—	2	0.191
40 - 44	7	0.745	2	0.227
45 - 49	10	1.173	3	0.373
50 - 54	7	0.845	3	0.364
55 - 59	15	1.864	7	0.836
60 - 64	25	3.345	17	2.164
65 - 69	29	4.1	22	2.873
70 - 74	26	4.882	21	3.491
75 - 79	24	7.482	27	6.245
80 - 84	22	12.973	14	5.082
85 and over	11	12.645	14	0.182
<b>TOTAL</b>	<b>213</b>	<b>1.118</b>	<b>157</b>	<b>0.836</b>



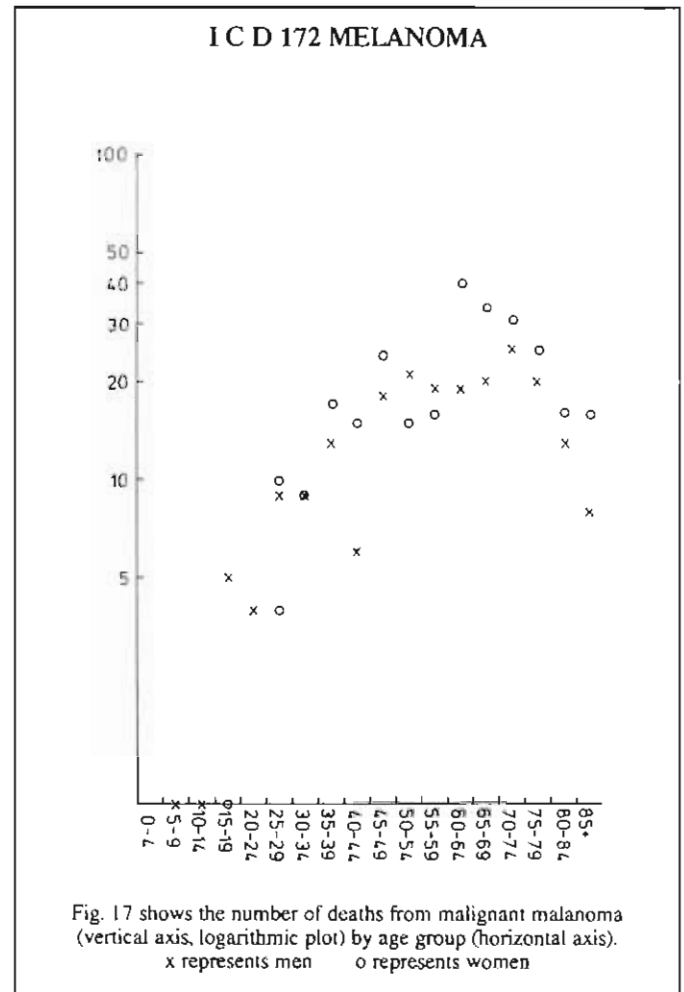
**Table 16**  
**NO. OF DEATHS AND AVERAGE ANNUAL DEATH RATE PER HUNDRED THOUSAND FROM CANCER OF CONNECTIVE AND OTHER SOFT TISSUE BY SEX AND AGE GROUP**

Age Range	MALE		FEMALE	
	No. of deaths	Rate per 100,000	No. of deaths	Rate per 100,000
0 - 4	5	0.255	7	0.373
5 - 9	6	0.3	1	0.055
10 - 14	2	0.1	3	0.545
15 - 19	4	0.218	5	0.282
20 - 24	3	0.191	4	0.264
25 - 29	8	0.582	3	0.227
30 - 34	5	0.382	—	—
35 - 39	8	0.736	1	0.1
40 - 44	2	0.209	6	0.673
45 - 49	4	0.464	6	0.736
50 - 54	16	1.927	8	0.982
55 - 59	5	0.618	9	1.073
60 - 64	15	2.009	15	1.909
65 - 69	14	1.982	14	1.827
70 - 74	20	3.755	16	2.655
75 - 79	6	1.873	12	2.782
80 - 84	10	5.891	8	2.9
85 and over	6	6.9	7	4.218
<b>TOTAL</b>	<b>139</b>	<b>0.727</b>	<b>125</b>	<b>0.664</b>



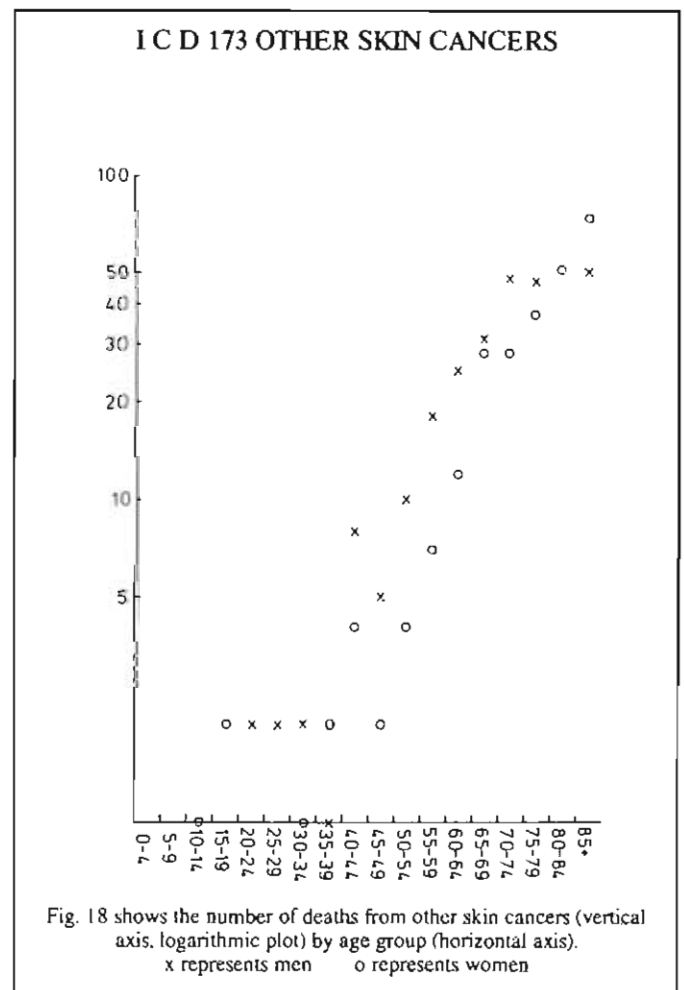
**Table 17**  
**NO. OF DEATHS AND AVERAGE ANNUAL DEATH RATE**  
**PER HUNDRED THOUSAND FROM MALIGNANT**  
**MELANOMA OF THE SKIN BY SEX AND AGE GROUP**

Age Range	MALE		FEMALE	
	No. of deaths	Rate per 100,000	No. of deaths	Rate per 100,000
5 - 9	1	0.055	—	—
10 - 14	1	0.055	—	—
15 - 19	5	0.273	1	0.055
20 - 24	4	0.255	4	0.264
25 - 29	9	0.655	10	0.745
30 - 34	9	0.691	9	0.718
35 - 39	13	1.191	17	1.636
40 - 44	6	0.636	15	1.691
45 - 49	18	2.1	24	2.945
50 - 54	21	2.536	15	1.836
55 - 59	19	2.355	16	1.909
60 - 64	19	2.545	40	5.1
65 - 69	20	2.827	34	4.436
70 - 74	25	4.7	31	5.145
75 - 79	20	6.264	25	5.782
80 - 84	13	7.664	16	5.809
85 and over	8	9.191	16	9.645
<b>TOTAL</b>	<b>211</b>	<b>1.109</b>	<b>273</b>	<b>1.445</b>



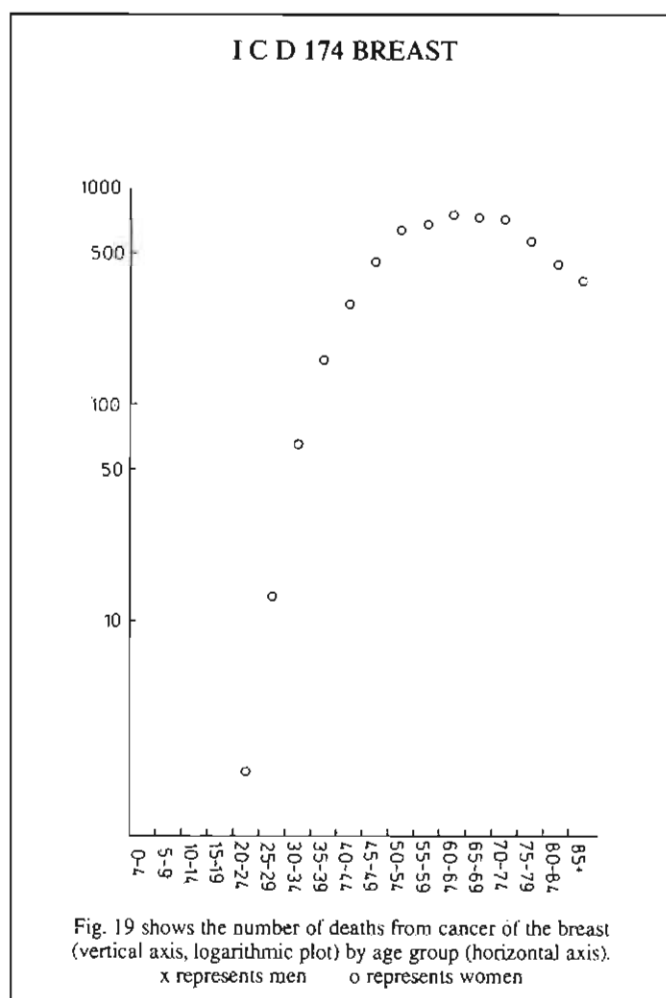
**Table 18**  
**NO. OF DEATHS AND AVERAGE ANNUAL DEATH RATE PER HUNDRED THOUSAND FROM OTHER**  
**CANCER OF THE SKIN BY SEX AND AGE GROUP**

Age Range	MALE		FEMALE	
	No. of deaths	Rate per 100,000	No. of deaths	Rate per 100,000
10 - 14	—	—	1	0.055
15 - 19	—	—	2	0.118
20 - 24	2	0.127	—	—
25 - 29	2	0.145	—	—
30 - 34	2	0.155	1	0.082
35 - 39	1	0.091	2	0.191
40 - 44	8	0.855	4	0.455
45 - 49	5	0.582	2	0.245
50 - 54	10	1.209	4	0.491
55 - 59	18	2.227	7	0.836
60 - 64	25	3.345	12	1.527
65 - 69	31	4.382	28	3.655
70 - 74	48	9.018	28	4.645
75 - 79	47	14.645	37	8.564
80 - 84	52	30.664	51	18.509
85 and over	50	57.464	74	44.627
<b>TOTAL</b>	<b>301</b>	<b>1.582</b>	<b>253</b>	<b>1.345</b>



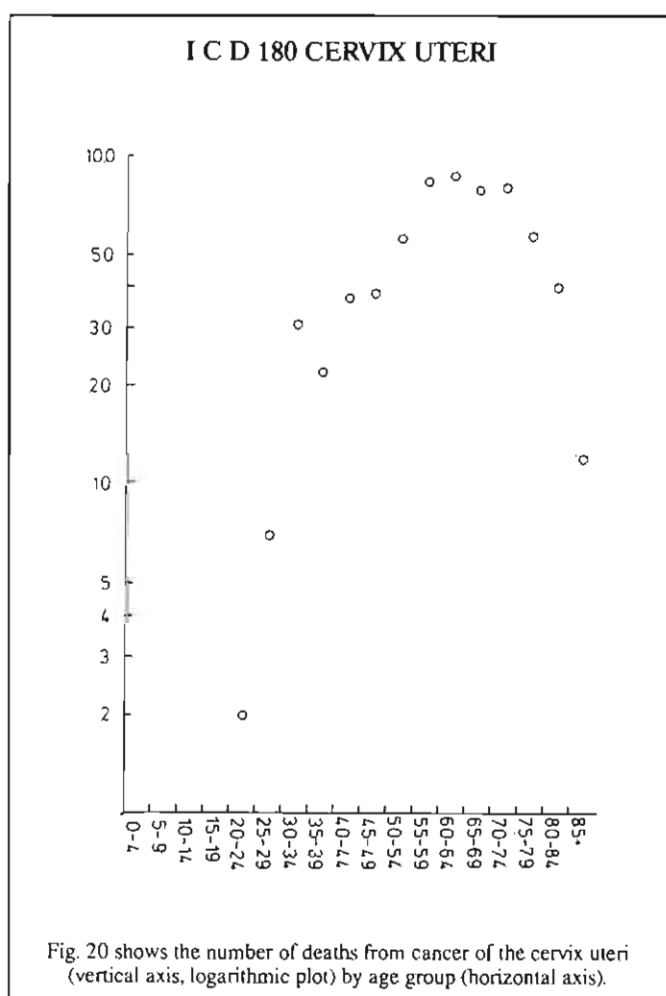
**Table 19**  
**NO. OF DEATHS AND AVERAGE ANNUAL DEATH**  
**RATE PER HUNDRED THOUSAND FROM BREAST**  
**CANCER BY SEX AND AGE GROUP**

Age Range	MALE		FEMALE	
	No. of deaths	Rate per 100,000	No. of deaths	Rate per 100,000
20 - 24	—	—	2	0.091
25 - 29	—	—	13	1.0
30 - 34	—	—	66	5.273
35 - 39	—	—	164	15.727
40 - 44	1	0.091	296	33.364
45 - 49	—	—	459	56.364
50 - 54	1	0.091	638	78.0
55 - 59	2	0.273	672	80.091
60 - 64	9	1.182	754	96.182
65 - 69	2	0.273	741	96.727
70 - 74	3	0.545	735	122.0
75 - 79	2	0.636	579	134.0
80 - 84	2	1.182	451	163.727
85 and over	2	2.273	373	225.364
<b>TOTAL</b>	<b>24</b>	<b>0.091</b>	<b>5,943</b>	<b>31.545</b>



**Table 20**  
**NO. OF DEATHS AND AVERAGE ANNUAL DEATH**  
**RATE PER HUNDRED THOUSAND FROM CANCER**  
**OF CERVIX UTERI BY AGE GROUP**

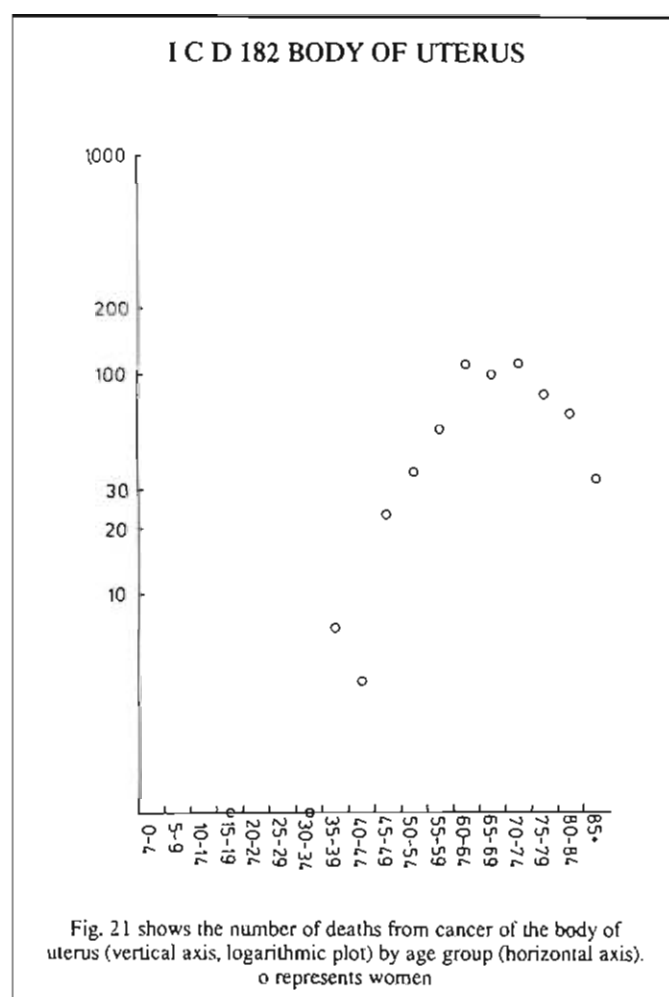
Age Range	No. of deaths	Rate per 100,000
20 - 24	2	0.136
25 - 29	7	0.518
30 - 34	31	2.482
35 - 39	22	2.118
40 - 44	37	4.173
45 - 49	38	4.664
50 - 54	56	6.845
55 - 59	83	9.891
60 - 64	87	11.091
65 - 69	79	10.318
70 - 74	80	13.282
75 - 79	57	13.191
80 - 84	40	14.518
85 and over	12	7.236
<b>TOTAL</b>	<b>631</b>	<b>3.345</b>





**Table 21**  
**NO. OF DEATHS AND AVERAGE ANNUAL DEATH RATE**  
**PER HUNDRED THOUSAND FROM CANCER OF BODY OF**  
**UTERUS BY AGE GROUP**

Age Range	No. of deaths	Rate per 100,000
15 - 19	1	0.055
20 - 24	—	—
25 - 29	—	—
30 - 34	1	0.082
35 - 39	7	0.673
40 - 44	4	0.455
45 - 49	23	2.818
50 - 54	36	4.4
55 - 59	56	6.673
60 - 64	110	14.027
65 - 69	98	12.8
70 - 74	109	18.1
75 - 79	80	18.518
80 - 84	65	23.591
85 and over	33	19.9
<b>TOTAL</b>	<b>623</b>	<b>3.3</b>



**Table 22**  
**NO. OF DEATHS AND AVERAGE ANNUAL DEATH RATE**  
**PER HUNDRED THOUSAND FROM CANCER OF**  
**OVARY AND UTERINE ADNEXA BY AGE GROUP**

Age Range	No. of deaths	Rate per 100,000
1 - 4	1	0.055
5 - 9	—	—
10 - 14	—	—
15 - 19	4	0.227
20 - 24	1	0.064
25 - 29	12	0.9
30 - 34	12	0.964
35 - 39	21	2.018
40 - 44	52	5.864
45 - 49	110	13.5
50 - 54	165	20.173
55 - 59	220	26.209
60 - 64	288	36.727
65 - 69	279	36.436
70 - 74	224	37.191
75 - 79	164	37.955
80 - 84	118	42.827
85 and over	25	15.073
<b>TOTAL</b>	<b>1,726</b>	<b>9.155</b>

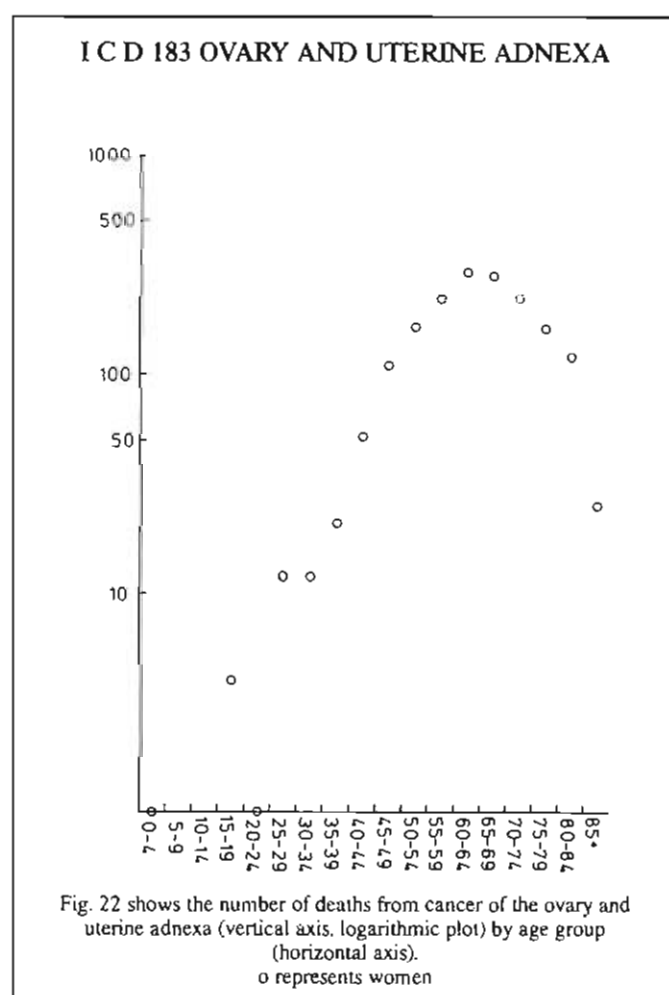


Table 23

NO. OF DEATHS AND AVERAGE ANNUAL DEATH RATE PER HUNDRED THOUSAND FROM CANCER OF OTHER AND UNSPECIFIED FEMALE GENITAL ORGANS BY AGE GROUP

Age Range	No. of deaths	Rate per 100,000
30 - 34	1	0.082
35 - 39	1	0.1
40 - 44	1	0.109
45 - 49	7	0.864
50 - 54	5	0.609
55 - 59	14	1.664
60 - 64	11	1.4
65 - 69	29	3.791
70 - 74	30	4.982
75 - 79	39	9.027
80 - 84	32	11.618
85 and over	31	18.7
<b>TOTAL</b>	<b>201</b>	<b>1.609</b>

### I C D 184 CANCER OF OTHER AND UNSPECIFIED FEMALE GENITAL ORGANS

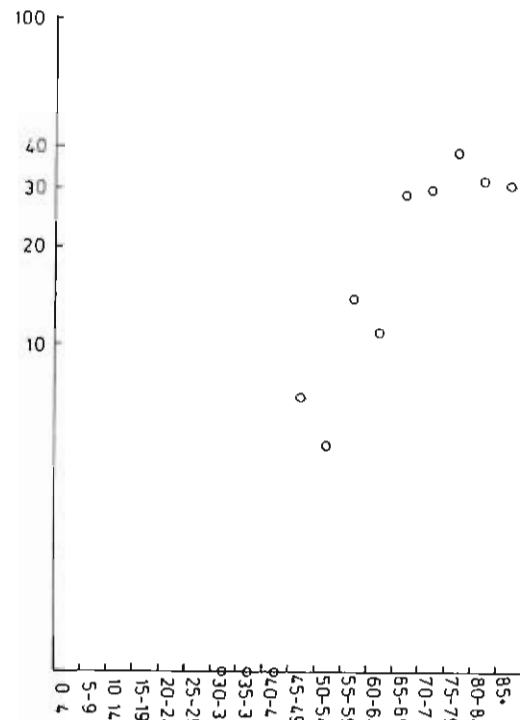


Fig. 23 shows the number of deaths from cancer of other and unspecified female genital organs (vertical axis, logarithmic plot) by age group (horizontal axis).  
o represents women

Table 24

NO. OF DEATHS AND AVERAGE ANNUAL DEATH RATE PER HUNDRED THOUSAND FROM CANCER OF PROSTATE BY AGE GROUP

Age Range	No. of deaths	Rate per 100,000
0 - 4	2	0.1
5 - 9	—	—
10 - 14	—	—
15 - 19	1	0.055
20 - 24	—	—
25 - 29	—	—
30 - 34	1	0.073
35 - 39	—	—
40 - 44	1	0.109
45 - 49	6	0.7
50 - 54	23	2.773
55 - 59	76	9.4
60 - 64	228	30.491
65 - 69	474	67.009
70 - 74	760	142.809
75 - 79	915	285.145
80 - 84	759	447.618
85 and over	476	547.064
<b>TOTAL</b>	<b>3,722</b>	<b>19.564</b>

### I C D 185 PROSTATE

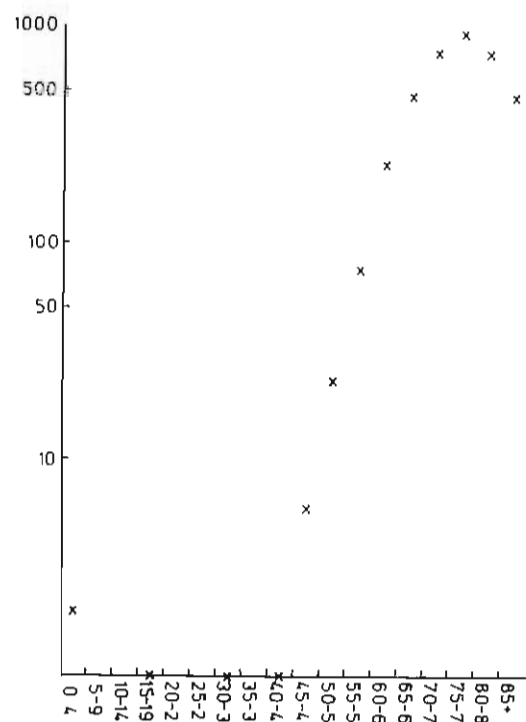
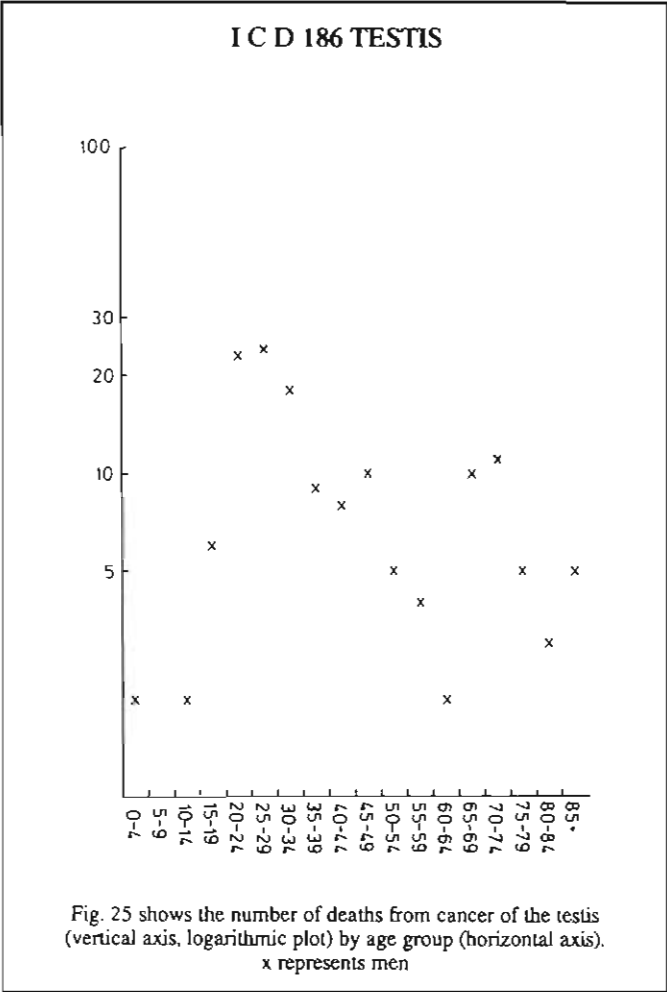


Fig. 24 shows the number of deaths from cancer of the prostate (vertical axis, logarithmic plot) by age group (horizontal axis).  
x represents men

**Table 25**  
**NO. OF DEATHS AND AVERAGE ANNUAL DEATH**  
**RATE PER HUNDRED THOUSAND FROM CANCER**  
**OF TESTIS BY AGE GROUP**

Age Range	No. of deaths	Rate per 100,000
0 - 4	2	0.1
5 - 9	—	—
10 - 14	2	0.1
15 - 19	6	0.327
20 - 24	23	1.491
25 - 29	24	1.755
30 - 34	18	1.382
35 - 39	9	0.827
40 - 44	8	0.855
45 - 49	10	1.173
50 - 54	5	0.6
55 - 59	4	0.5
60 - 64	2	0.264
65 - 69	10	1.418
70 - 74	11	2.064
75 - 79	5	1.555
80 - 84	3	1.773
85 and over	5	5.745
<b>TOTAL</b>	<b>147</b>	<b>0.773</b>



**Table 26**  
**NO. OF DEATHS AND AVERAGE ANNUAL DEATH**  
**RATE PER HUNDRED THOUSAND FROM CANCER**  
**OF BLADDER BY SEX AND AGE GROUP**

Age Range	MALE		FEMALE	
	No. of deaths	Rate per 100,000	No. of deaths	Rate per 100,000
20 - 24	—	—	1	0.064
25 - 29	1	0.073	—	—
30 - 34	—	—	1	0.082
35 - 39	2	0.182	—	—
40 - 44	5	0.536	2	0.227
45 - 49	17	1.991	5	0.618
50 - 54	23	2.773	10	1.218
55 - 59	67	8.309	23	2.736
60 - 64	121	16.182	47	5.991
65 - 69	155	21.909	622	8.091
70 - 74	240	45.091	64	10.627
75 - 79	199	62.009	90	20.827
80 - 84	142	83.745	80	29.036
85 and over	102	117.273	62	37.391
<b>TOTAL</b>	<b>1,074</b>	<b>5.645</b>	<b>447</b>	<b>2.373</b>

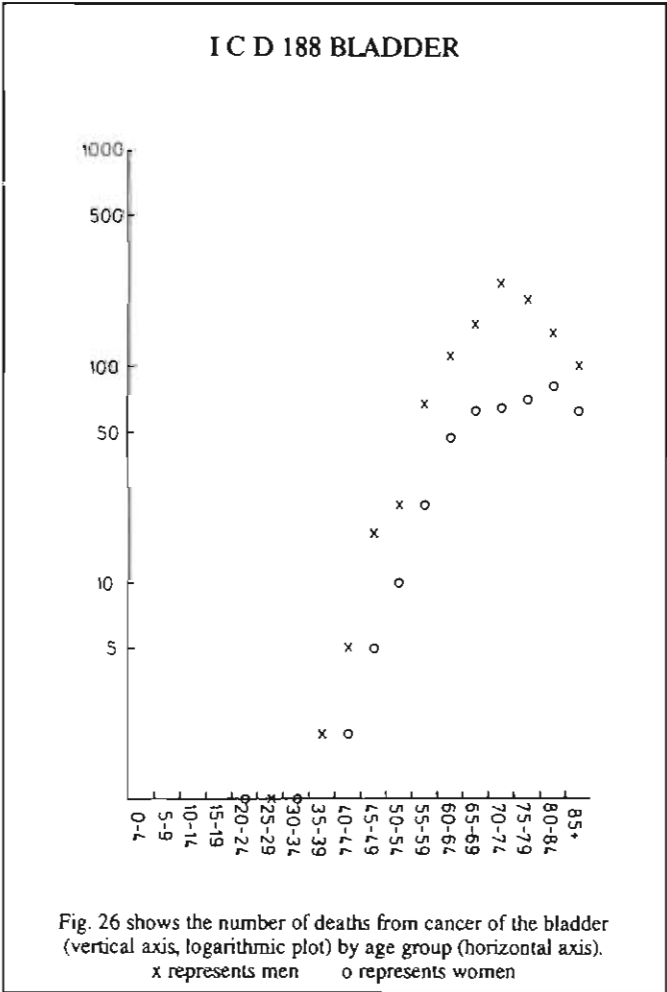


Table 27

NO. OF DEATHS AND AVERAGE ANNUAL DEATH RATE PER HUNDRED THOUSAND FROM CANCER OF KIDNEY AND OTHER URINARY ORGANS BY SEX AND AGE GROUP

Age Range	MALE		FEMALE	
	No. of deaths	Rate per 100,000	No. of deaths	Rate per 100,000
0 - 4	2	0.1	9	0.473
5 - 9	2	0.1	4	0.209
10 - 14	—	—	1	0.055
15 - 19	1	0.055	1	0.055
20 - 24	2	0.127	5	0.336
25 - 29	3	0.218	1	0.073
30 - 34	3	0.227	7	0.564
35 - 39	8	0.736	4	0.382
40 - 44	17	1.809	6	0.673
45 - 49	31	3.627	13	1.6
50 - 54	46	5.555	26	3.182
55 - 59	80	9.927	36	4.291
60 - 64	98	13.109	46	5.864
65 - 69	117	16.536	58	7.573
70 - 74	100	18.791	63	10.464
75 - 79	81	25.245	40	9.255
80 - 84	30	17.691	20	7.255
85 and over	12	13.791	27	16.282
<b>TOTAL</b>	<b>633</b>	<b>3.327</b>	<b>374</b>	<b>1.982</b>

I C D 189 KIDNEY

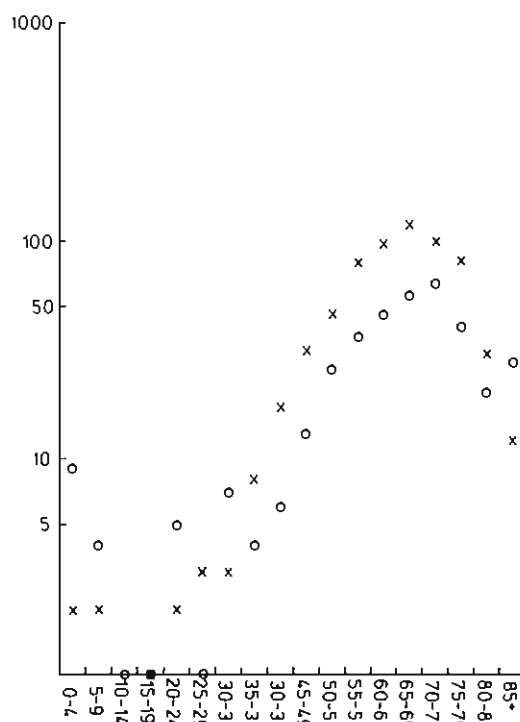


Fig. 27 shows the number of deaths from cancers of kidney and other urinary organs (vertical axis, logarithmic plot) by age group (horizontal axis).

x represents men o represents women

Table 28

NO. OF DEATHS AND AVERAGE ANNUAL DEATH RATE PER HUNDRED THOUSAND FROM CANCER OF BRAIN BY SEX AND AGE GROUP

Age Range	MALE		FEMALE	
	No. of deaths	Rate per 100,000	No. of deaths	Rate per 100,000
0 - 4	25	1.255	23	1.218
5 - 9	26	1.318	23	1.227
10 - 14	19	0.982	17	0.927
15 - 19	14	0.764	12	0.682
20 - 24	16	1.036	14	0.936
25 - 29	20	1.464	24	1.791
30 - 34	36	2.764	20	1.6
35 - 39	30	2.745	12	1.155
40 - 44	36	3.836	38	4.282
45 - 49	62	7.245	35	4.291
50 - 54	108	13.036	47	5.745
55 - 59	109	13.518	68	8.1
60 - 64	137	18.318	104	13.264
65 - 69	135	19.082	88	11.491
70 - 74	71	13.345	64	10.627
75 - 79	26	8.1	28	6.482
80 - 84	14	8.255	17	6.173
85 and over	3	3.445	8	4.827
<b>TOTAL</b>	<b>887</b>	<b>4.664</b>	<b>642</b>	<b>3.409</b>

I C D 191 BRAIN

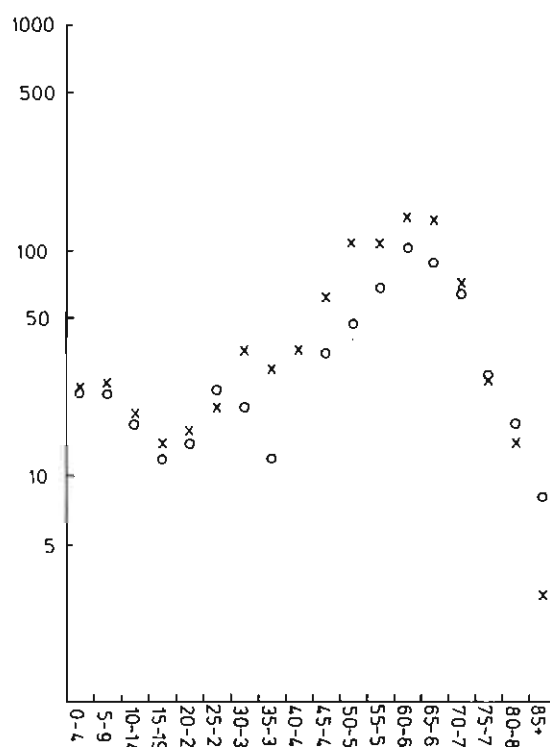
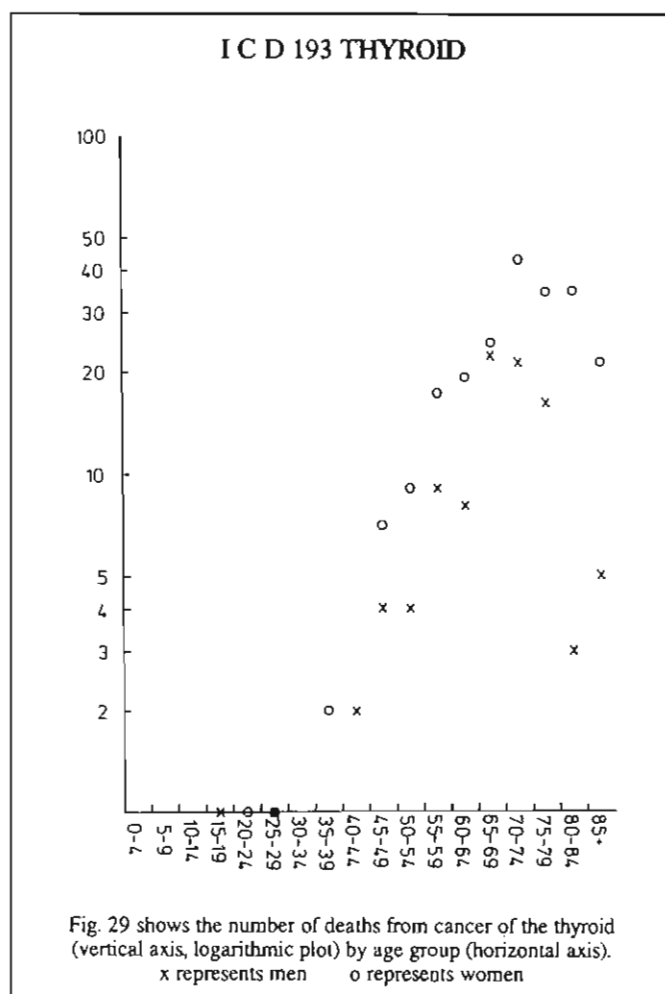


Fig. 28 shows the number of deaths from cancer of the brain (vertical axis, logarithmic plot) by age group (horizontal axis).

x represents men o represents women

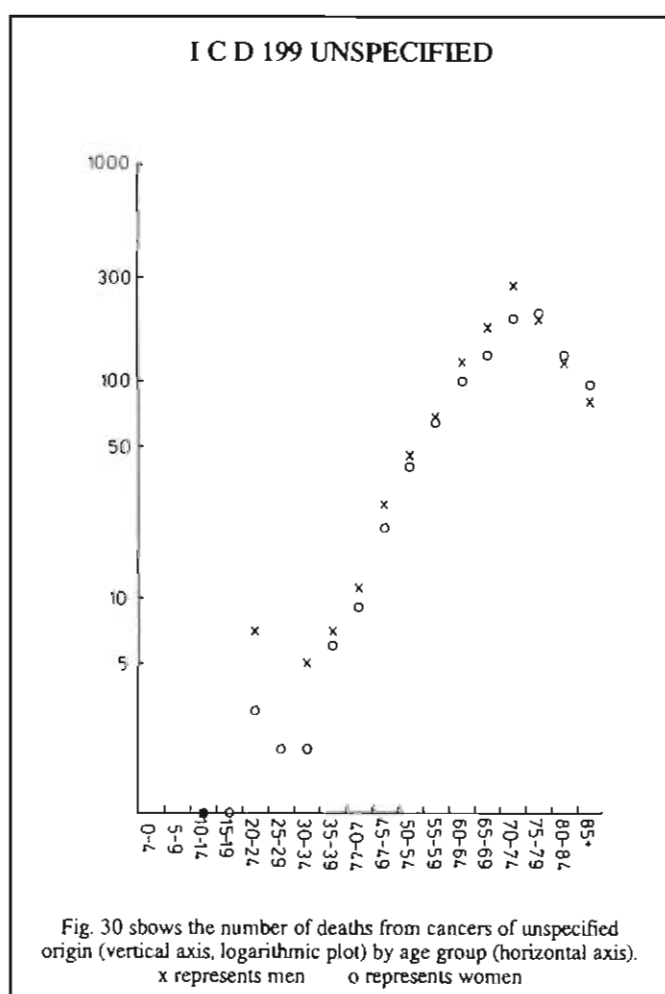
**Table 29**  
**NO. OF DEATHS AND AVERAGE ANNUAL DEATH RATE PER HUNDRED THOUSAND FROM CANCER OF THYROID GLAND BY SEX AND AGE GROUP**

Age Range	MALE		FEMALE	
	No. of deaths	Rate per 100,000	No. of deaths	Rate per 100,000
15 - 19	1	0.055	—	—
20 - 24	—	—	1	0.064
25 - 29	1	0.073	1	0.073
30 - 34	—	—	—	—
35 - 39	—	—	2	0.191
40 - 44	2	0.209	—	—
45 - 49	4	0.464	7	0.864
50 - 54	4	0.482	9	1.1
55 - 59	9	1.118	17	2.0
60 - 64	8	1.073	19	2.427
65 - 69	22	3.109	24	3.136
70 - 74	21	3.945	42	6.973
75 - 79	16	4.982	34	7.873
80 - 84	3	1.773	34	12.336
85 and over	5	5.745	21	12.664
<b>TOTAL</b>	<b>96</b>	<b>0.509</b>	<b>211</b>	<b>1.118</b>



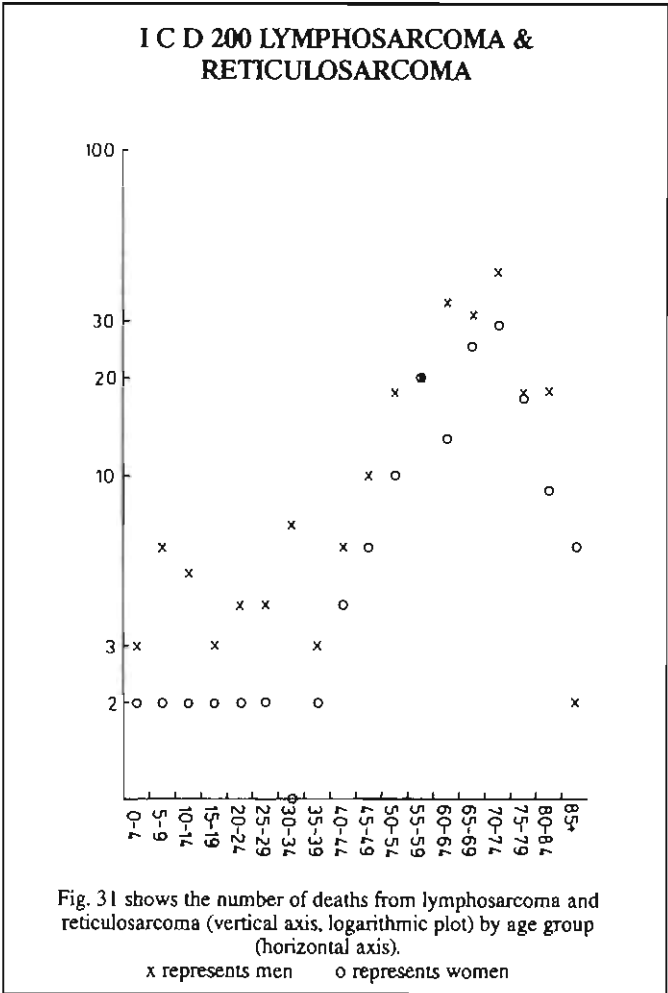
**Table 30**  
**NO. OF DEATHS AND AVERAGE ANNUAL DEATH RATE PER HUNDRED THOUSAND FROM CANCER — NO SPECIFICATION OF SITE — BY SEX AND AGE GROUP**

Age Range	MALE		FEMALE	
	No. of deaths	Rate per 100,000	No. of deaths	Rate per 100,000
10 - 14	1	0.055	1	0.055
15 - 19	—	—	1	0.055
20 - 24	7	0.455	3	0.2
25 - 29	2	0.145	2	0.145
30 - 34	5	0.382	2	0.164
35 - 39	7	0.645	6	0.573
40 - 44	11	1.173	9	1.018
45 - 49	27	3.155	21	2.582
50 - 54	45	5.427	40	4.909
55 - 59	69	8.555	64	7.627
60 - 64	122	16.318	99	12.618
65 - 69	176	24.882	133	17.373
70 - 74	267	50.173	194	32.209
75 - 79	187	58.273	204	47.218
80 - 84	116	68.409	134	48.636
85 and over	80	9.191	96	57.9
<b>TOTAL</b>	<b>1,122</b>	<b>5.9</b>	<b>1,009</b>	<b>5.355</b>



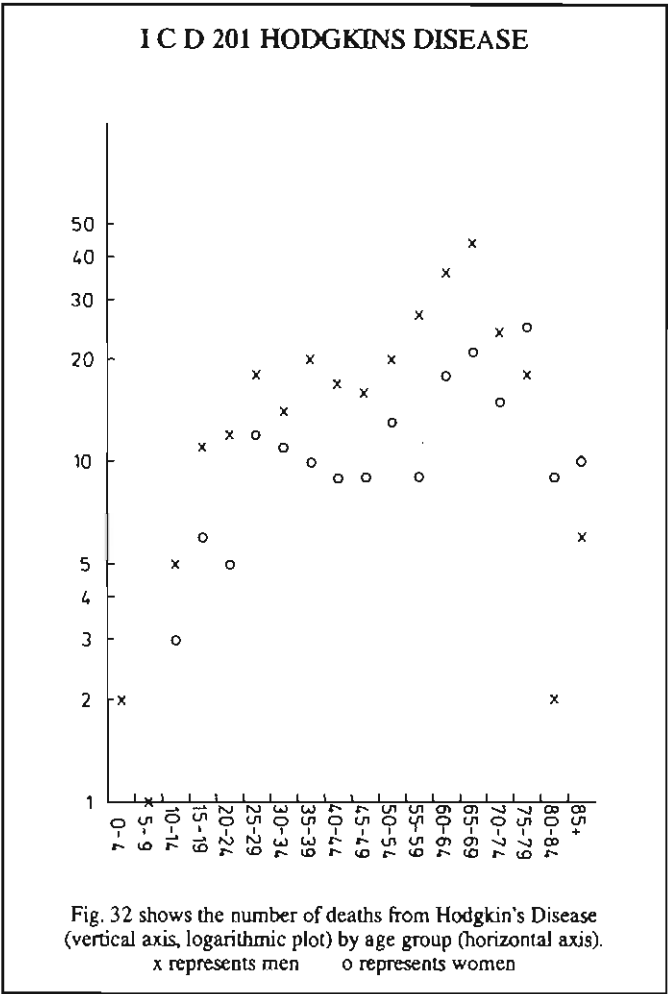
**Table 31**  
**NO. OF DEATHS AND AVERAGE ANNUAL DEATH RATE**  
**PER HUNDRED THOUSAND FROM LYMPHOSARCOMA**  
**AND RETICULOSARCOMA BY SEX AND AGE GROUP**

Age Range	MALE		FEMALE	
	No. of deaths	Rate per 100,000	No. of deaths	Rate per 100,000
0 - 4	3	0.155	2	0.109
5 - 9	6	0.3	2	0.109
10 - 14	5	0.264	2	0.109
15 - 19	3	0.164	2	0.118
20 - 24	4	0.255	2	0.136
25 - 29	4	0.291	2	0.145
30 - 34	7	0.827	1	0.082
35 - 39	3	0.273	2	0.191
40 - 44	6	0.636	4	0.455
45 - 49	10	1.173	6	0.736
50 - 54	18	2.636	10	1.218
55 - 59	20	2.482	20	2.382
60 - 64	34	4.545	13	1.655
65 - 69	31	4.382	25	3.264
70 - 74	42	7.891	29	4.818
75 - 79	18	5.609	17	3.936
80 - 84	18	10.618	9	3.264
85 and over	2	2.3	6	3.618
<b>TOTAL</b>	<b>234</b>	<b>1.227</b>	<b>154</b>	<b>0.818</b>



**Table 32**  
**NO. OF DEATHS AND AVERAGE ANNUAL DEATH RATE**  
**PER HUNDRED THOUSAND FROM HODGKINS DISEASE**  
**BY SEX AND AGE GROUP**

Age Range	MALE		FEMALE	
	No. of deaths	Rate per 100,000	No. of deaths	Rate per 100,000
0 - 4	2	0.1	—	—
5 - 9	1	0.055	—	—
10 - 14	5	0.264	3	0.164
15 - 19	11	0.6	6	0.345
20 - 24	12	0.773	5	0.336
25 - 29	18	1.318	12	0.9
30 - 34	14	1.073	11	0.882
35 - 39	20	1.827	10	0.955
40 - 44	17	1.873	9	1.109
45 - 49	16	1.873	9	1.109
50 - 54	20	2.418	13	1.591
55 - 59	27	3.345	9	1.073
60 - 64	36	4.818	18	2.291
65 - 69	44	6.218	21	2.745
70 - 74	24	4.509	15	2.491
75 - 79	18	5.609	25	5.782
80 - 84	2	1.182	9	3.264
85 and over	6	6.9	10	6.027
<b>TOTAL</b>	<b>303</b>	<b>1.591</b>	<b>185</b>	<b>0.982</b>



**Table 33**  
NO. OF DEATHS AND AVERAGE ANNUAL DEATH RATE PER  
HUNDRED THOUSAND FROM OTHER MALIGNANT NEOPLASMS  
OF LYMPHOID TISSUE BY SEX AND AGE GROUP

Age Range	MALE		FEMALE	
	No. of deaths	Rate per 100,000	No. of deaths	Rate per 100,000
0 - 4	1	0.055	—	—
5 - 9	3	0.155	2	0.109
10 - 14	7	0.364	1	0.055
15 - 19	11	0.6	2	0.118
20 - 24	7	0.455	8	0.536
25 - 29	6	0.436	3	0.227
30 - 34	9	0.691	7	0.564
35 - 39	13	1.191	8	0.773
40 - 44	16	1.709	7	0.791
45 - 49	27	3.154	15	1.845
50 - 54	26	3.136	18	2.2
55 - 59	45	5.582	26	3.1
60 - 64	62	8.291	34	4.336
65 - 69	76	10.745	53	6.918
70 - 74	67	12.591	55	9.127
75 - 79	48	14.955	37	8.564
80 - 84	21	12.382	35	12.7
85 and over	12	13.791	16	9.645
<b>TOTAL</b>	<b>457</b>	<b>2.4</b>	<b>327</b>	<b>1.736</b>

**I C D 202 OTHER MALIGNANT NEOPLASMS OF  
LYMPHOID TISSUE**

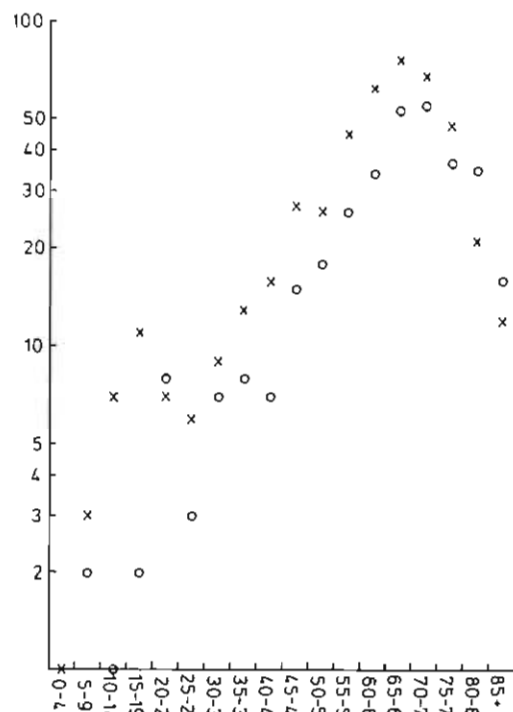


Fig. 33 shows the number of deaths from non other malignant neoplasms of lymphoid tissue (vertical axis, logarithmic plot) by age group (horizontal axis).  
x represents men o represents women

**Table 34**  
NO. OF DEATHS AND AVERAGE ANNUAL DEATH  
RATE PER HUNDRED THOUSAND FROM  
MULTIPLE MYELOMA BY SEX AND AGE GROUP

Age Range	MALE		FEMALE	
	No. of deaths	Rate per 100,000	No. of deaths	Rate per 100,000
25 - 29	1	0.073	—	—
30 - 34	1	0.073	2	0.164
35 - 39	6	0.545	2	0.191
40 - 44	7	0.745	2	0.227
45 - 49	16	1.873	10	1.227
50 - 54	35	4.227	30	3.664
55 - 59	55	6.818	34	4.055
60 - 64	73	9.764	67	8.545
65 - 69	92	13.009	84	10.973
70 - 74	115	21.609	91	15.109
75 - 79	104	32.409	83	19.209
80 - 84	47	27.718	52	18.873
85 and over	22	25.282	19	11.455
<b>TOTAL</b>	<b>574</b>	<b>3.018</b>	<b>476</b>	<b>2.527</b>

**I C D 203 MULTIPLE MYELOMA**

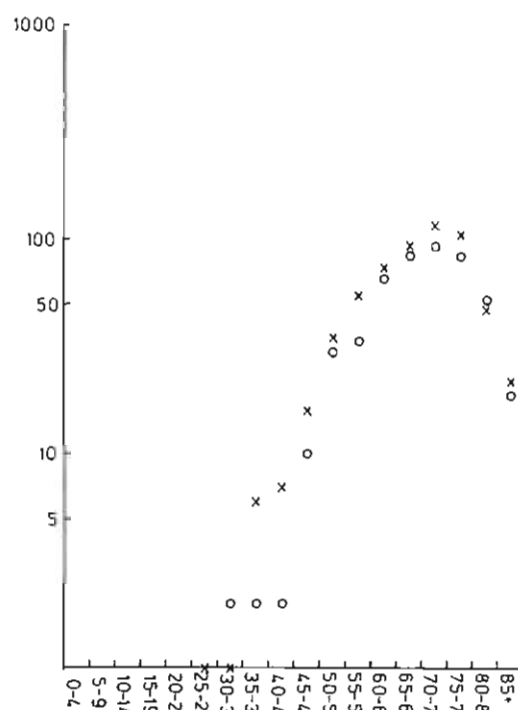


Fig. 34 shows the number of deaths from multiple myeloma (vertical axis, logarithmic plot) by age group (horizontal axis).  
x represents men o represents women

Table 35

NO. OF DEATHS AND AVERAGE ANNUAL DEATH RATE PER HUNDRED THOUSAND FROM ACUTE LYMPHOID LEUKAEMIA BY SEX AND AGE GROUP

Age Range	MALE		FEMALE	
	No. of deaths	Rate per 100,000	No. of deaths	Rate per 100,000
0 - 4	22	1.109	16	0.845
5 - 9	35	1.773	21	1.118
10 - 14	13	0.673	11	0.6
15 - 19	9	0.491	9	0.509
20 - 24	11	0.709	7	0.473
25 - 29	6	0.436	3	0.227
30 - 34	3	0.227	2	0.164
35 - 39	3	0.273	4	0.382
40 - 44	3	0.318	—	—
45 - 49	1	0.118	3	0.364
50 - 54	3	0.364	2	0.245
55 - 59	5	0.618	2	0.236
60 - 64	4	0.536	3	0.382
65 - 69	8	1.127	7	0.918
70 - 74	6	1.127	4	0.664
75 - 79	5	1.555	8	1.855
80 - 84	6	3.536	6	2.182
85 and over	8	9.191	2	1.209
<b>TOTAL</b>	<b>151</b>	<b>0.791</b>	<b>110</b>	<b>0.582</b>

## I C D 204.0 ACUTE LYMPHOID LEUKAEMIA

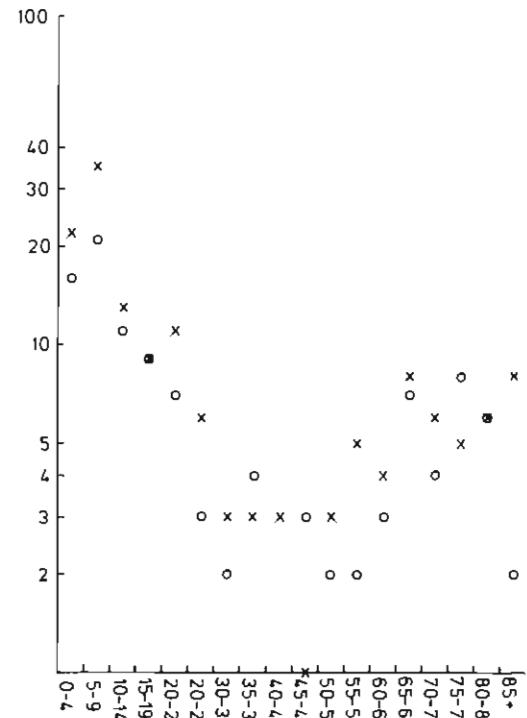


Fig. 35 shows the number of deaths from acute lymphoid leukaemia (vertical axis, logarithmic plot) by age group (horizontal axis).  
x represents men o represents women

Table 36

NO. OF DEATHS AND AVERAGE ANNUAL DEATH RATE PER HUNDRED THOUSAND FROM CHRONIC LYMPHOID LEUKAEMIA BY SEX AND AGE GROUP

Age Range	MALE		FEMALE	
	No. of deaths	Rate per 100,000	No. of deaths	Rate per 100,000
15 - 19	—	—	1	0.055
20 - 24	—	—	—	—
25 - 29	—	—	—	—
30 - 34	—	—	—	—
35 - 39	1	0.091	—	—
40 - 44	2	0.209	1	0.109
45 - 49	6	0.7	3	0.373
50 - 54	10	1.209	4	0.491
55 - 59	19	2.355	3	0.355
60 - 64	42	5.618	15	1.909
65 - 69	46	6.5	20	2.609
70 - 74	66	12.4	17	2.818
75 - 79	50	15.582	36	8.336
80 - 84	31	18.282	26	9.436
85 and over	21	24.136	23	13.873
<b>TOTAL</b>	<b>294</b>	<b>1.545</b>	<b>149</b>	<b>0.791</b>

## I C D 204.1 CHRONIC LYMPHOID LEUKAEMIA

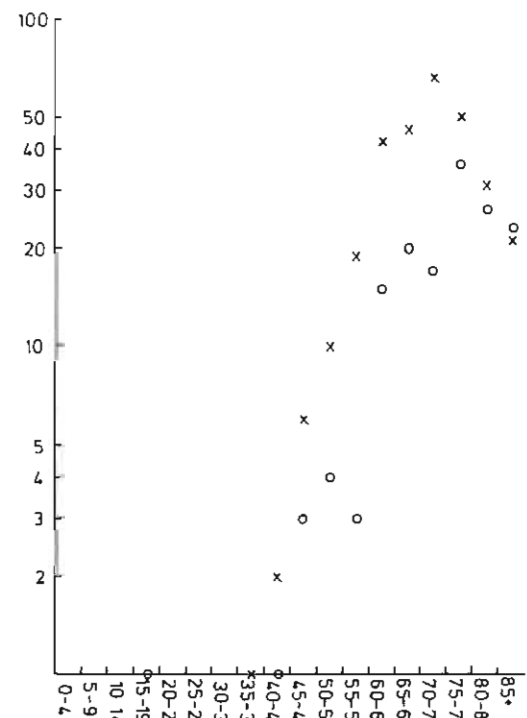


Fig. 36 shows the number of deaths from chronic lymphoid leukaemia (vertical axis, logarithmic plot) by age group (horizontal axis).  
x represents men o represents women



Table 37

NO. OF DEATHS AND AVERAGE ANNUAL DEATH RATE PER HUNDRED THOUSAND FROM ACUTE MYELOID LEUKAEMIA BY SEX AND AGE GROUP

Age Range	MALE		FEMALE	
	No. of deaths	Rate per 100,000	No. of deaths	Rate per 100,000
0 - 4	6	0.3	10	0.527
5 - 9	9	0.455	1	0.055
10 - 14	6	0.309	9	0.491
15 - 19	15	0.818	8	0.455
20 - 24	10	0.645	7	0.473
25 - 29	12	0.873	3	0.227
30 - 34	6	0.464	11	0.882
35 - 39	9	0.827	11	1.055
40 - 44	12	1.282	5	0.564
45 - 49	8	0.936	14	1.718
50 - 54	12	1.445	14	1.709
55 - 59	20	2.482	21	2.5
60 - 64	27	3.609	19	2.418
65 - 69	56	7.918	28	3.654
70 - 74	55	10.336	31	5.145
75 - 79	32	9.973	28	6.482
80 - 84	18	10.618	27	9.8
85 and over	10	11.491	15	9.045
<b>TOTAL</b>	<b>323</b>	<b>1.7</b>	<b>262</b>	<b>1.391</b>

## I C D 205.0 ACUTE MYELOID LEUKAEMIA

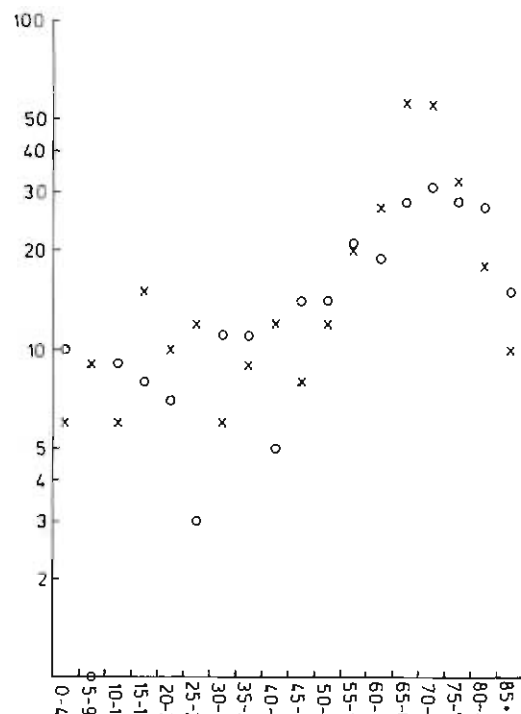


Fig. 37 shows the number of deaths from acute myeloid leukaemia (vertical axis, logarithmic plot) by age group (horizontal axis).  
x represents men o represents women

Table 38

NO. OF DEATHS AND AVERAGE ANNUAL DEATH RATE PER HUNDRED THOUSAND FROM CHRONIC MYELOID LEUKAEMIA BY SEX AND AGE GROUP

Age Range	MALE		FEMALE	
	No. of deaths	Rate per 100,000	No. of deaths	Rate per 100,000
0 - 4	3	0.155	4	0.209
5 - 9	—	—	—	—
10 - 14	—	—	1	0.055
15 - 19	2	0.109	—	—
20 - 24	2	0.127	2	0.136
25 - 29	4	0.291	1	0.073
30 - 34	8	0.618	5	0.4
35 - 39	4	0.364	3	0.291
40 - 44	5	0.536	4	0.455
45 - 49	7	0.818	5	0.618
50 - 54	6	0.727	9	1.1
55 - 59	1	1.364	14	1.664
60 - 64	14	1.873	13	1.655
65 - 69	14	1.982	10	1.309
70 - 74	25	4.7	13	2.155
75 - 79	16	4.982	7	1.618
80 - 84	10	5.9	9	3.264
85 and over	10	11.491	4	2.409
<b>TOTAL</b>	<b>141</b>	<b>0.745</b>	<b>104</b>	<b>0.555</b>

## I C D 205.1 CHRONIC MYELOID LEUKAEMIA

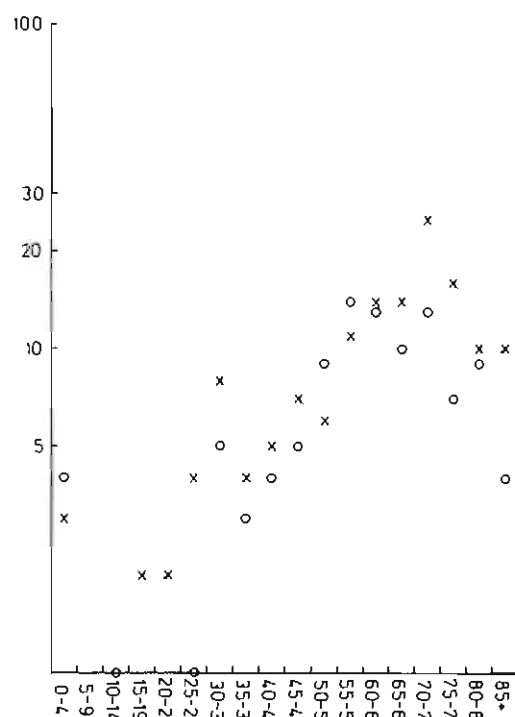
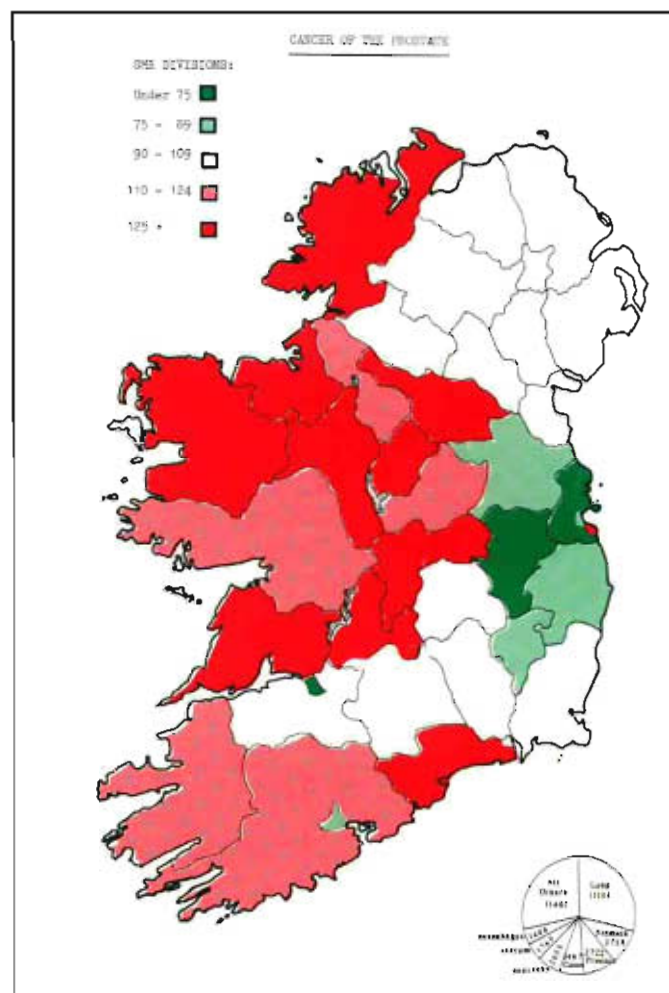
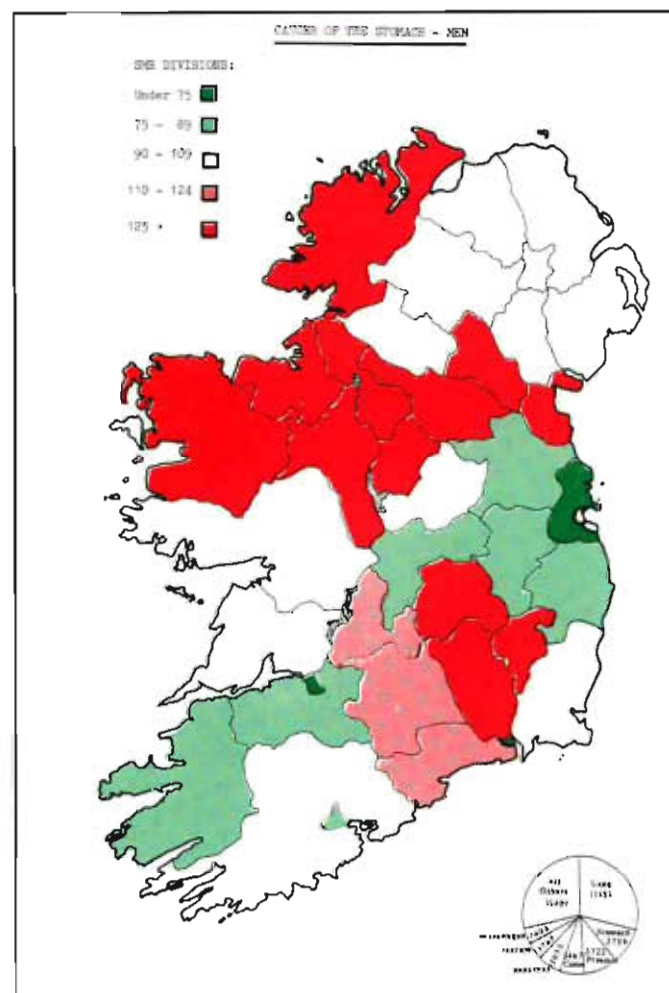
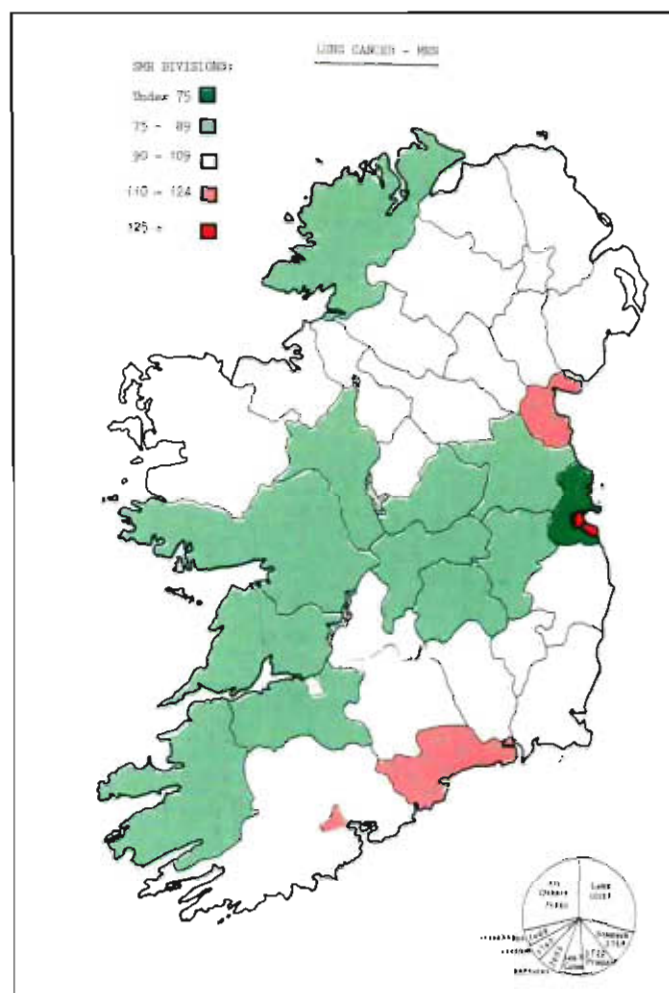
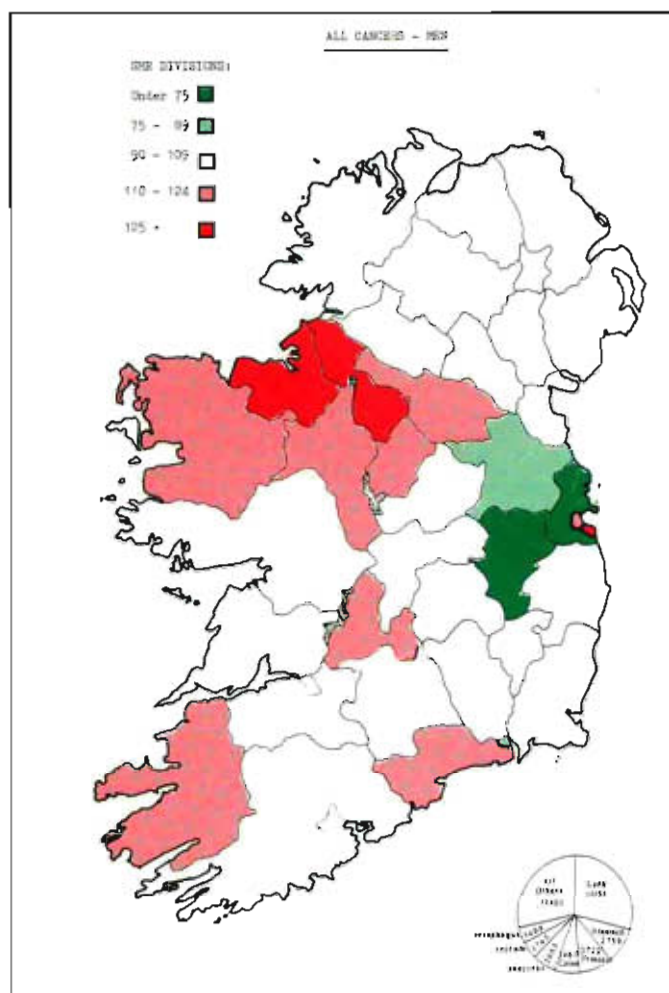
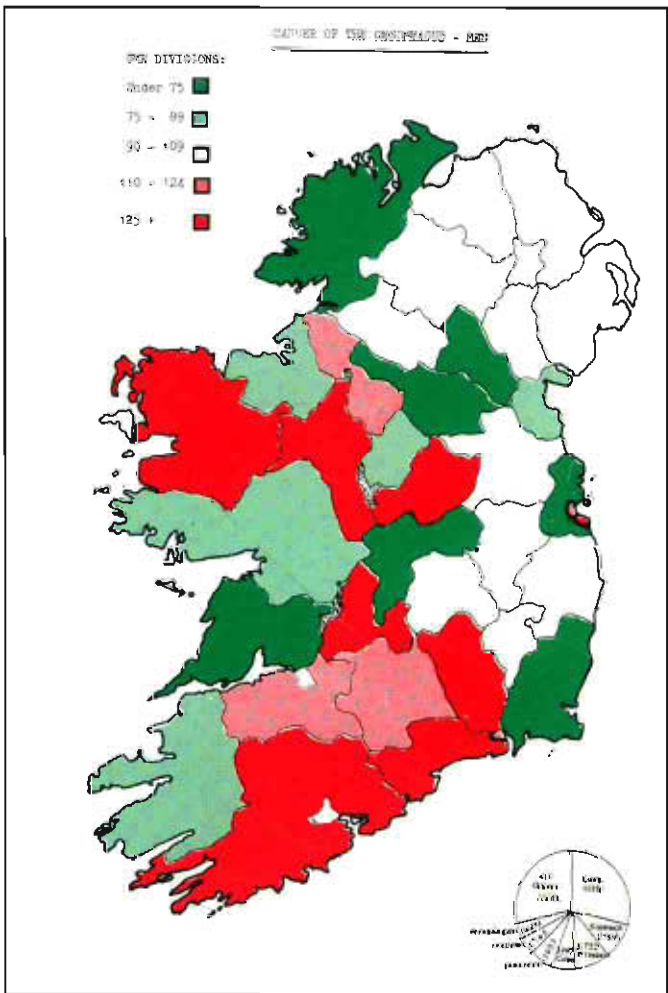
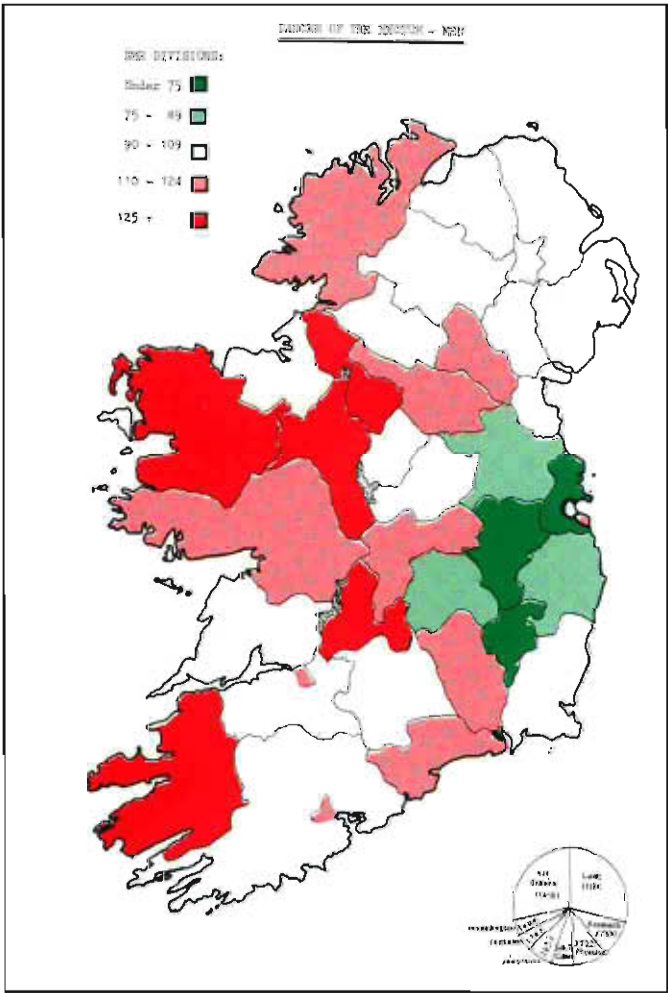
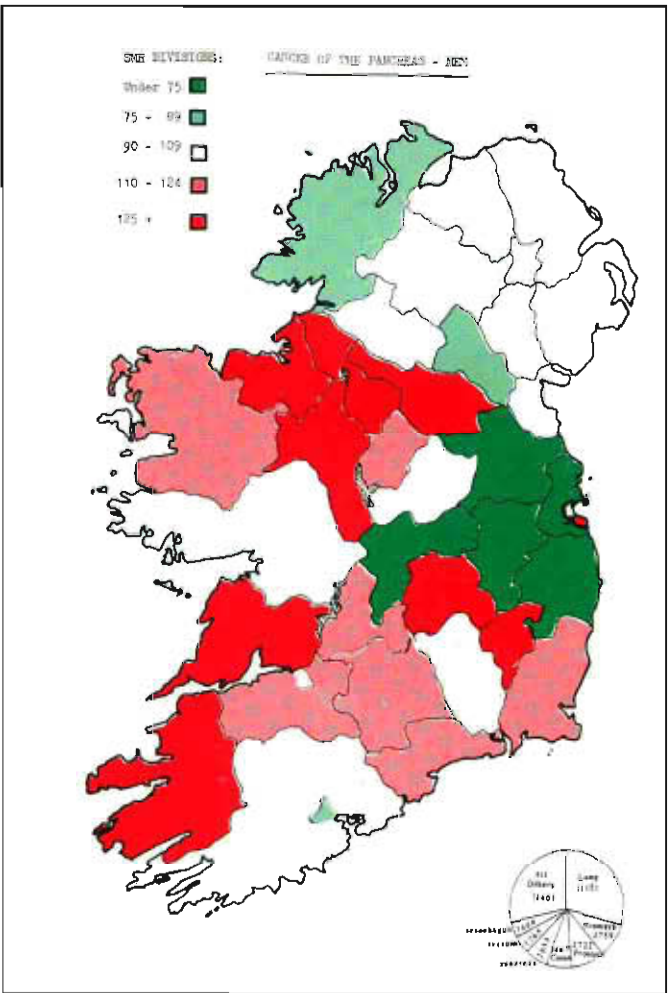
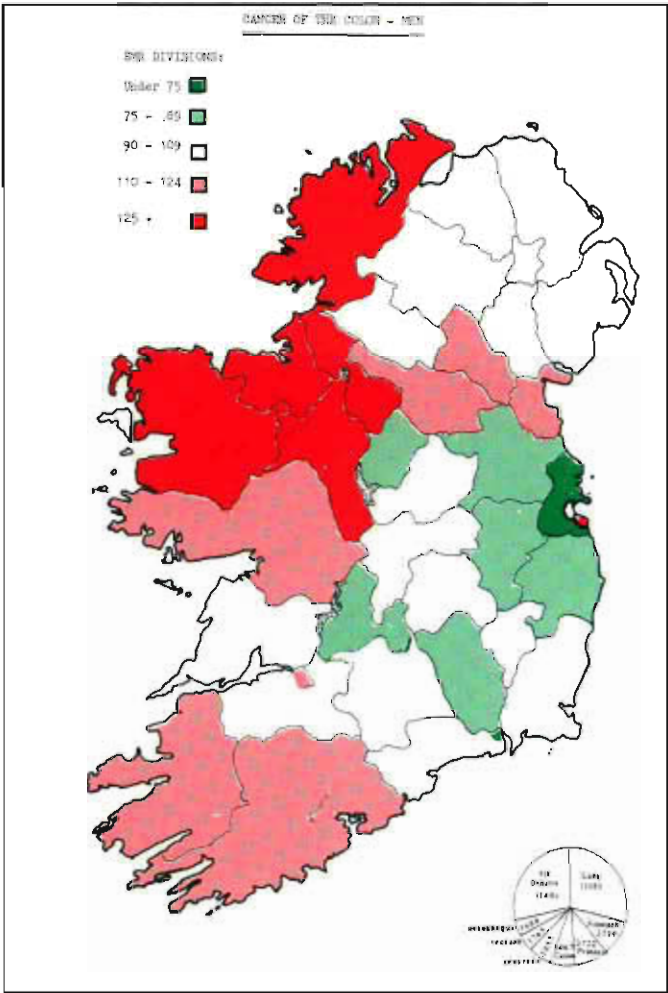
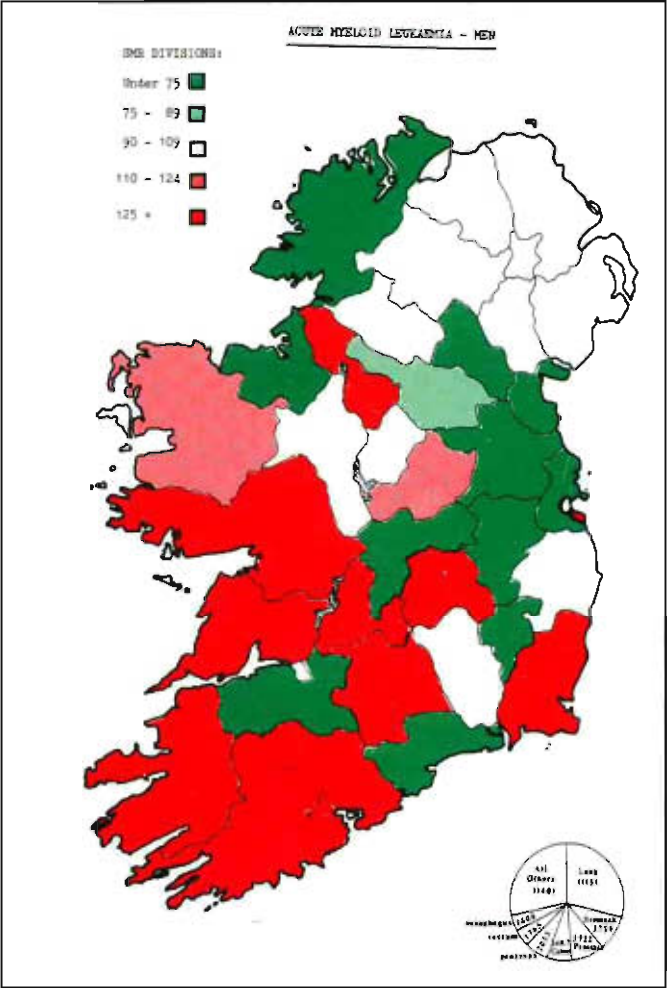


Fig. 38 shows the number of deaths from chronic myeloid leukaemia (vertical axis, logarithmic plot) by age group (horizontal axis).  
x represents men o represents women

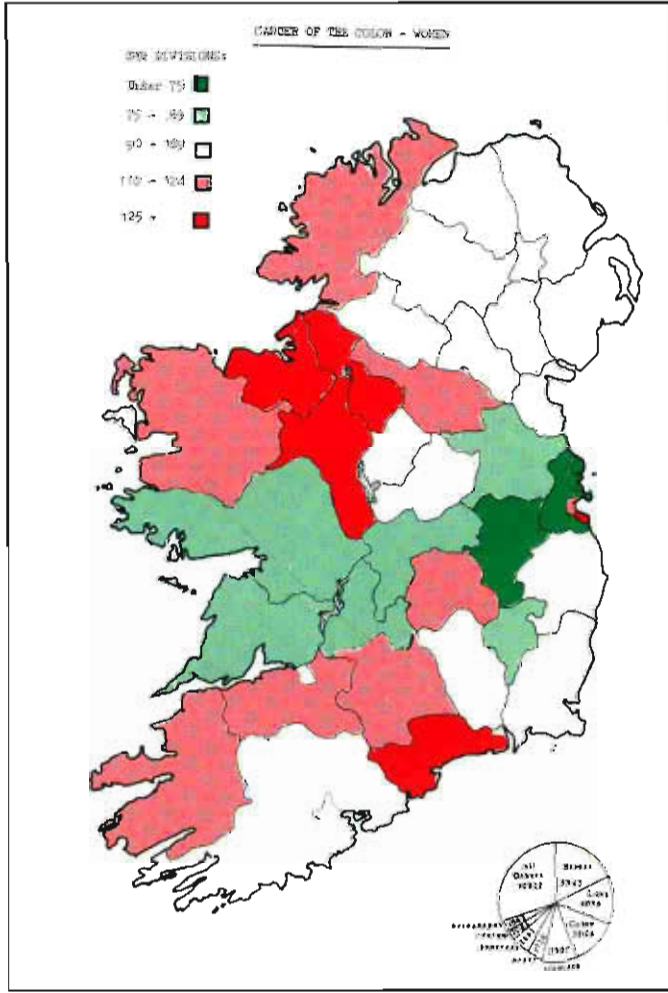
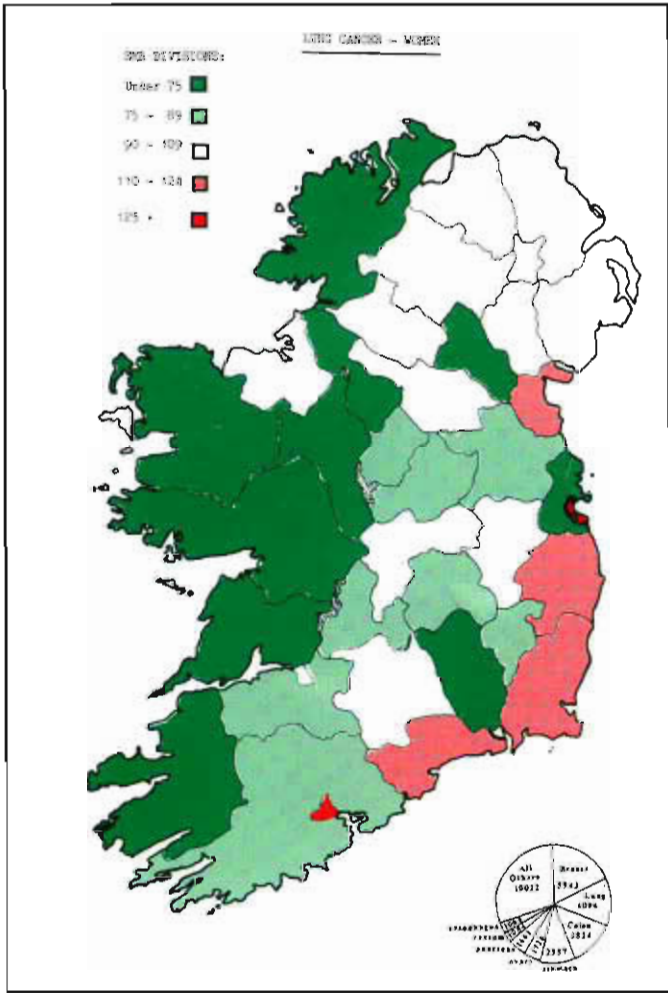
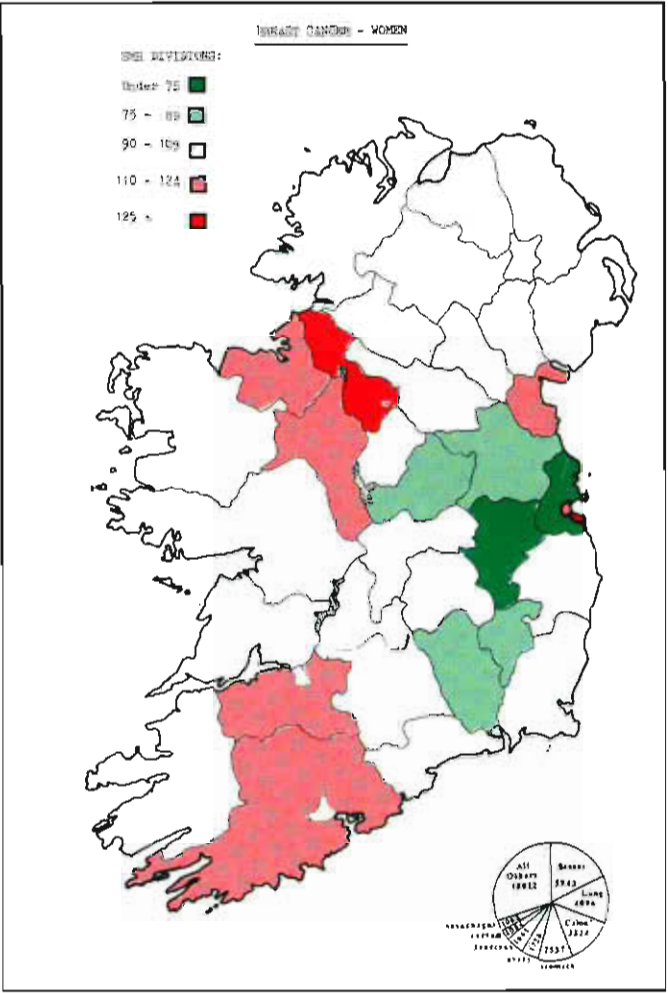
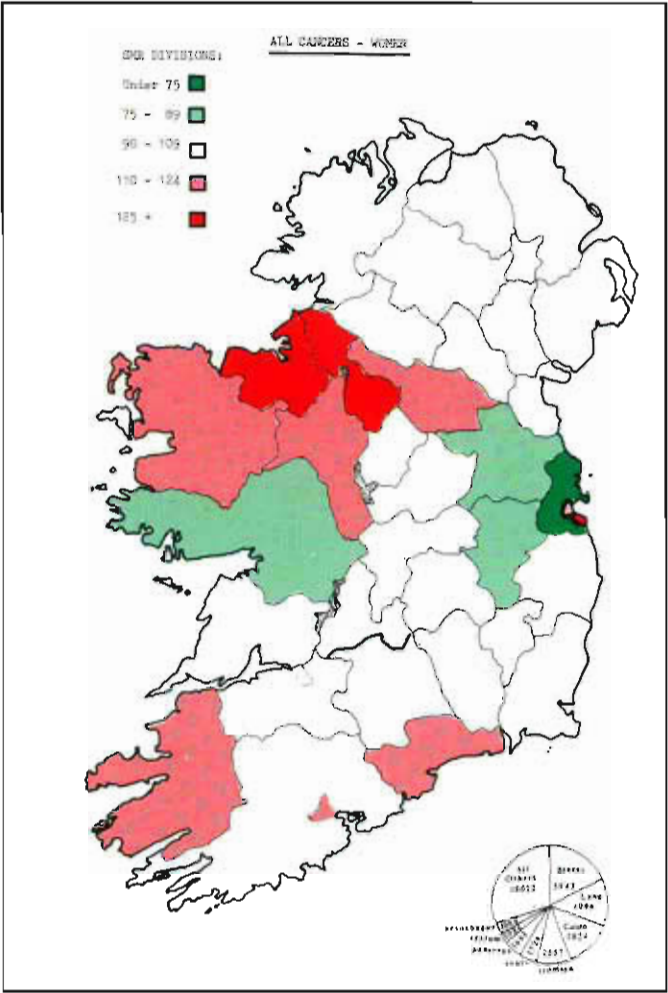
**MAPS OF CANCER MORTALITY, 1976-86**

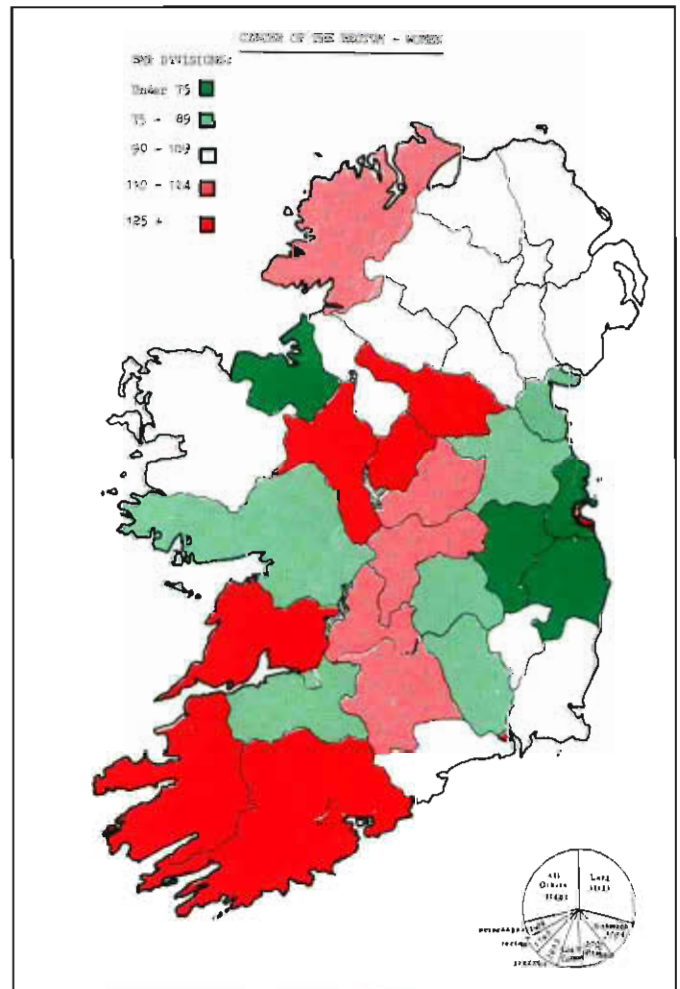
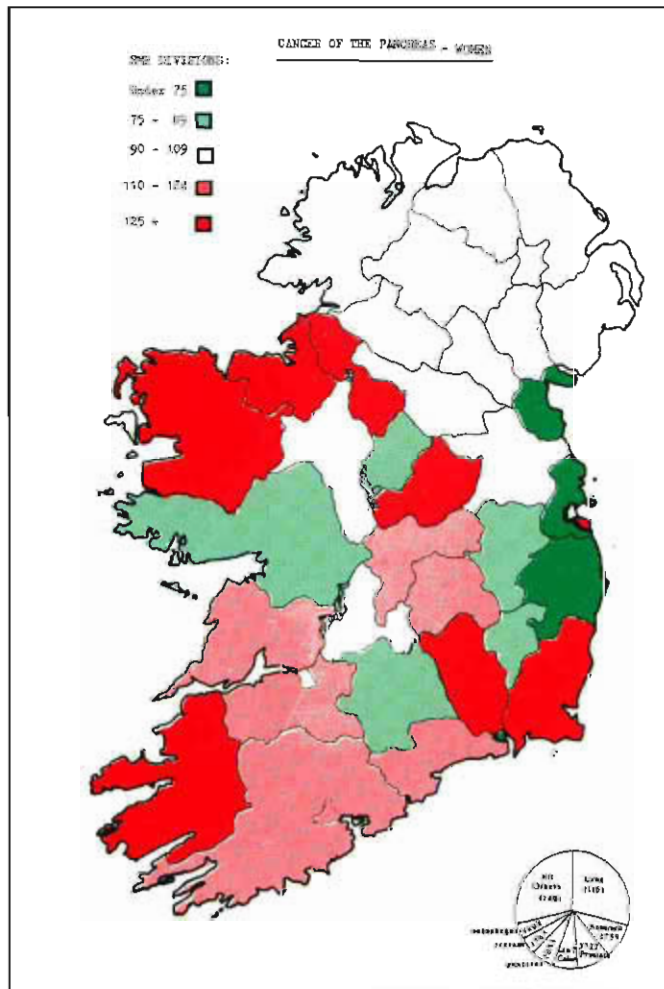
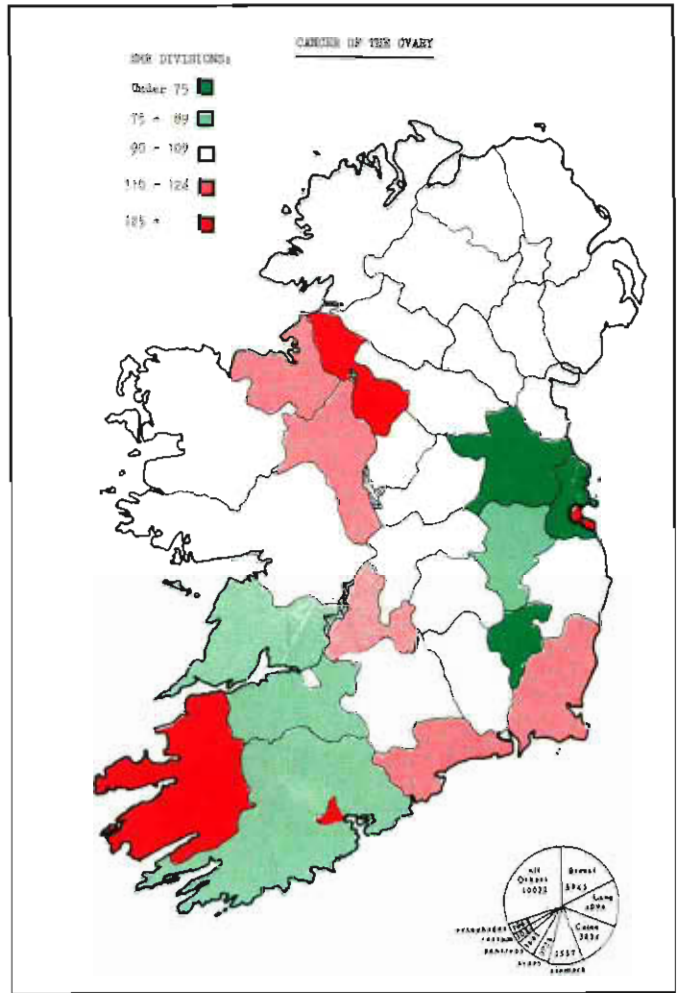
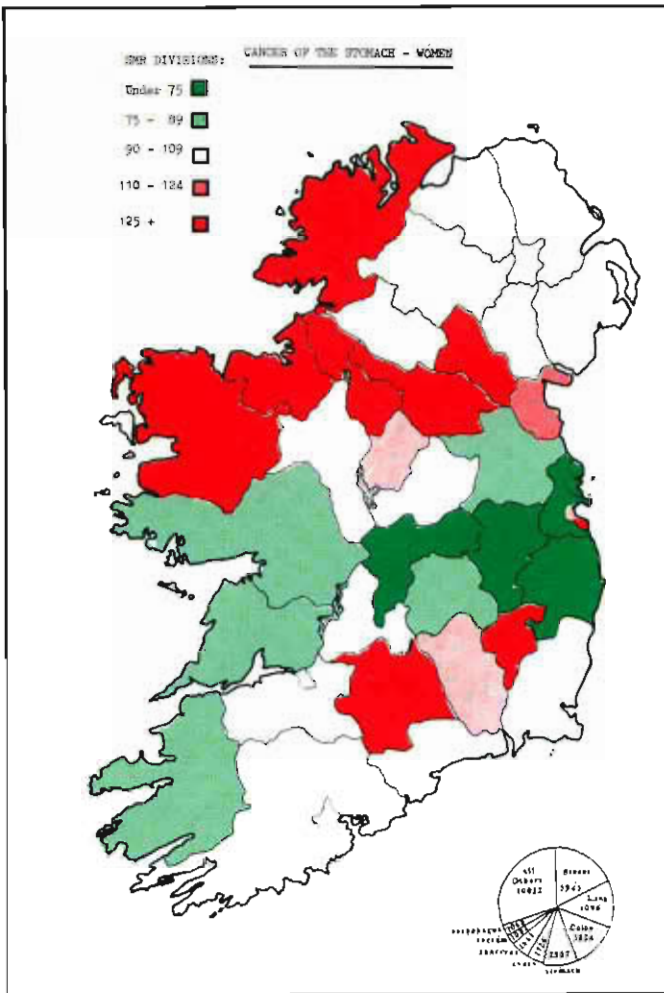


















# **TABLES OF SMRs FOR ALL CANCERS PER COUNTY, 1976-86**

**ALL CANCER DEATHS**  
**RANKED BY COUNTY AND COUNTY BOROUGH BY SMR**

<b>MEN</b>	<b>SMR</b>	<b>WOMEN:</b>	<b>SMR</b>
Dun Laoghaire Boro	143	Dun Laoghaire Boro	150
Leitrim	136	Leitrim	140
Sligo	125	Sligo	127
Dublin Co. Boro.	124	Dublin Co. Boro.	123
Mayo	123	Kerry	116
Roscommon	121	Cork Co. Boro.	113
Cavan	120	Cavan	113
Kerry	116	Waterford County	112
Tipperary N.R.	114	Mayo	111
Waterford County	114	Roscommon	111
Longford	112	Wexford	109
Cork County	107	Cork County	108
Tipperary S.R.	106	Tipperary S.R.	106
Donegal	105	Tipperary N.R.	102
Louth	104	Limerick Co. Boro	101
Cork Co. Boro.	103	Waterford Co. Boro.	101
Wexford	100	Longford	100
Clare	99	Limerick County	100
Galway	99	Laois	99
Carlow	98	Donegal	99
Westmeath	98	Louth	98
Monaghan	97	Monaghan	98
Kilkenny	95	Offaly	96
Limerick County	95	Clare	96
Laois	94	Westmeath	95
Limerick Co. Boro.	94	Wicklow	94
Wicklow	91	Carlow	92
Offaly	90	Kilkenny	90
Waterford Co. Boro.	89	Galway	88
Meath	85	Meath	84
Kildare	74	Kildare	76
Dublin County	49	Dublin County	54

**Table 39**  
**ALL CANCER DEATHS**

	MALE		FEMALE	
	Actual Deaths	SMR	Actual Deaths	SMR
Carlow	442	98	336	92
Dublin Co. Boro	6,908	124	6,363	123
Dun Laoghaire Boro	795	143*	833	150*
Dublin County	2,304	49§	2,158	54§
Kildare	897	74	712	76
Kilkenny	777	95	577	90
Laois	561	94	450	99
Longford	407	112	279	100
Louth	1,025	104	808	98
Meath	928	85	727	84
Offaly	608	90	501	96
Westmeath	689	98	534	95
Wexford	1,130	100	987	109
Wicklow	892	91	764	94
Leinster	18,363	93	16,029	95
Clare	1,010	99	754	96
Cork Co. Boro	1,523	103	1,484	113
Cork County	3,278	107	2,617	108
Kerry	1,656	116	1,279	116
Limerick Co. Boro	624	94	585	101
Limerick County	1,104	95	913	100
Tipperary NR	774	114	547	102
Tipperary SR	931	106	733	106
Waterford Co. Boro	375	89	370	101
Waterford County	659	114	508	112
Munster	11,934	105	9,790	107
Galway	1,952	99	1,376	88
Leitrim	447	136	337	140
Mayo	1,619	123	1,151	111
Roscommon	777	121	534	111
Sligo	791	125	646	127
Connacht	5,586	114	4,044	105
Cavan	761	120	540	113
Donegal	1,501	105	1,130	99
Monaghan	581	97	448	98
Ulster	2,843	107	2,118	102
Total	38,726		31,981	

\* Highest SMR § Lowest SMR

**Table 40**  
**CANCERS OF BONE AND CONNECTIVE TISSUE**

	Bone				Connective & Soft Tissue			
	MALE		FEMALE		MALE		FEMALE	
	Actual Deaths	SMR	Actual Deaths	SMR	Actual Deaths	SMR	Actual Deaths	SMR
Carlow	3	121	1	56	2	123	—	—
Dublin Co. Boro	32	105	23	90	19	95	21	104
Dun Laogh Boro	2	65	5	184	2	100	1	46
Dublin County	14	54	9	46	13	77	2	13§
Kildare	2	30§	5	109	2	46	3	82
Kilkenny	6	134	5	159	2	68	2	80
Laois	4	121	4	179	8	372	1	56
Longford	6	300	2	146	1	77	1	92
Louth	3	55	4	98	5	141	3	93
Meath	4	66	4	94	2	51	2	59
Offaly	3	80	2	78	1	41§	2	98
Westmeath	2	52	2	72	2	79	4	182
Wexford	9	145	3	67	3	74	5	141
Wicklow	5	93	3	75	3	85	3	94
Leinster	95	87	72	87	65	91	50	76
Clare	6	107	8	207*	2	55	7	227
Cork Co. Boro	7	86	7	109	5	94	1	20
Cork County	16	95	11	92	12	110	8	84
Kerry	8	102	6	111	4	78	6	139
Limerick Co. Boro	6	164	1	35§	2	84	4	177
Limerick County	6	94	2	45	4	96	4	112
Tipperary NR	5	134	4	152	3	123	—	—
Tipperary SR	3	62	2	59	2	63	3	111
Waterford Co. B.	7	303*	—	—	—	—	3	70
Waterford County	4	126	4	179	—	—	1	56
Munster	68	109	45	100	34	83	37	103
Galway	19	175	11	144	8	113	12	197
Leitrim	—	—	2	169	5	423*	3	318*
Mayo	7	96	8	157	7	148	5	123
Roscommon	3	85	4	169	4	174	2	106
Sligo	4	115	4	160	5	221	2	100
Connacht	33	122	29	154	29	165	24	160
Cavan	6	172	3	128	3	132	4	215
Donegal	7	89	4	71	6	117	6	135
Monaghan	4	122	4	178	2	93	4	224
Ulster	17	116	11	108	11	115	14	173
Total	213		157		139		125	

\* Highest SMR § Lowest SMR

**Table 41**  
**SKIN CANCERS**

	Malignant Melanoma				Other Skin			
	MALE		FEMALE		MALE		FEMALE	
	Actual Deaths	SMR	Actual Deaths	SMR	Actual Deaths	SMR	Actual Deaths	SMR
Carlow	3	122	2	64	4	114	3	104
Dublin Co. Boro	39	129	48	108	33	76	36	88
Dun Laog. Boro	6	198	5	106	4	93	3	68
Dublin County	16	63	32	94	10	27§	14	44§
Kildare	6	91	5	62	10	106	8	108
Kilkenny	2	45	4	73	2	32	4	79
Laois	3	92	3	77	7	150	5	139
Longford	6	303*	1	42	2	71	1	45
Louth	5	93	3	42	4	52	3	46
Meath	6	100	4	54	11	129	4	58
Offaly	1	27§	3	67	2	38	3	73
Westmeath	4	104	3	63	7	128	3	67
Wexford	8	130	9	116	8	91	5	69
Wicklow	2	38	8	115	4	53	6	93
Leinster	107	99	130	90	108	70	98	73
Clare	6	108	9	163	9	114	13	209
Cork Co. Boro	9	111	9	81	5	43	6	58
Cork County	13	78	27	130	30	127	24	125
Kerry	10	129	12	127	18	163	15	171
Limerick Co. Boro	7	193	9	182*	8	155	4	87
Limerick County	7	111	8	102	15	166	13	180
Tipperary NR	2	54	3	66	7	133	4	94
Tipperary SR	4	84	7	119	6	88	9	165
Waterford Co. B.	5	219	4	127	3	92	4	137
Waterford County	2	64	6	155	8	178	6	167
Munster	65	105	94	120	109	124	98	135
Galway	8	74	15	113	19	124	13	105
Leitrim	3	167	2	97	4	156	7	367*
Mayo	7	97	13	146	11	107	6	73
Roscommon	1	29	4	97	9	180	7	183
Sligo	2	58	4	92	9	183*	6	149
Connacht	21	79	38	116	52	136	39	129
Cavan	5	145	4	98	8	162	4	106
Donegal	10	128	6	62	16	144	12	133
Monaghan	3	92	1	26§	8	172	2	55
Ulster	18	124	11	62	32	155	18	110
Total	211		273		301		253	

\* Highest SMR § Lowest SMR

**Table 42**  
**HEAD AND NECK CANCERS — MEN**

	Nose, nasal, sinuses, middle ear		Buccal cavity		Pharynx		Larynx		Thyroid	
	MALE		FEMALE		MALE		FEMALE		MALE	
	Actual Deaths	SMR	Actual Deaths	SMR	Actual Deaths	SMR	Actual Deaths	SMR	Actual Deaths	SMR
Carlow	2	222	5	72	5	138	10	172	4	357*
Dublin Co. Boro	14	127	87	102	53	118	108	151	7	51
Dun Laogh Boro	—	—	10	116	6	133	14	196	2	145
Dublin County	5	54	23	32§	20	53	23	38§	10	86
Kildare	6	250*	19	102	6	62	12	77	4	134
Kilkenny	2	123	12	95	2	31	7	67	1	49
Laois	—	—	6	65	2	42	7	91	1	67
Longford	1	138	9	160	1	34	6	128	2	222
Louth	1	51	8	53	9	113	6	47	2	82
Meath	—	—	17	100	9	102	7	50	2	74
Offaly	1	74	6	57	5	92	6	91	1	59
Westmeath	—	—	10	92	7	124	10	110	1	57
Wexford	2	89	20	115	6	66	17	117	5	179
Wicklow	2	103	6	40	7	89	8	63	2	83
Leinster	36	91	238	78	138	87	241	94	44	90
Clare	3	149	17	108	9	110	12	92	4	159
Cork Co. Boro	—	—	11	48	14	118	28	147	3	82
Cork County	10	167	64	136	22	90	43	109	6	79
Kerry	3	106	38	173	8	70	13	71	6	170
Limerick Co. Boro	—	—	12	117	14	262	11	128	—	—
Limerick County	1	43	25	140	8	86	8	53	3	104
Tipperary NR	—	—	14	134	3	55	12	137	—	—
Tipperary SR	3	172	13	96	12	156	14	124	1	46§
Waterford Co. Boro	2	240	3	46	1	30§	12	222*	—	—
Waterford County	1	87	9	101	5	86	6	81	1	70
Munster	23	102	206	117	96	105	159	109	24	85
Galway	8	203	42	137	24	151	19	75	5	102
Leitrim	1	153	9	177*	7	265*	6	141	2	245
Mayo	1	38§	30	147	13	123	24	141	3	92
Roscommon	—	—	15	152	3	58	8	97	3	189
Sligo	2	159	15	154	9	178	12	148	2	128
Connacht	12	123	111	147	56	142	69	109	15	123
Cavan	3	238	9	92	3	59	6	73	4	254
Donegal	3	105	29	131	13	113	20	108	6	169
Monaghan	—	—	4	43	5	104	4	52	3	203
Ulster	6	113	42	102	21	98	30	87	13	197
Total	77		597		311		499		96	

\* Highest SMR § Lowest SMR

**Table 43**  
**HEAD AND NECK CANCERS — WOMEN**

	Nose, nasal, sinuses, middle ear		Buccal cavity		Pharynx		Larynx		Thyroid	
	Actual Deaths	SMR	Actual Deaths	SMR	Actual Deaths	SMR	Actual Deaths	SMR	Actual Deaths	SMR
Carlow	—	—	—	—	3	125	5	297	2	83
Dublin Co. Boro	7	120	31	99	42	123	27	97	34	99
Dun Laoghaire Boro	3	480*	4	119	5	137	3	118	3	82
Dublin County	3	67	15	57	8	31	5	27	12	46
Kildare	1	95	3	53	2	33	2	46	4	65
Kilkenny	—	—	—	—	2	47	2	68	3	71
Laois	—	—	1	36	1	33	2	96	2	67
Longford	—	—	1	59	—	—	1	78	4	218
Louth	1	107	6	119	5	92	3	79	5	92
Meath	1	102	3	57	7	88	3	75	6	105
Offaly	2	340	6	189	5	146	1	42	2	58
Westmeath	—	—	3	88	7	189*	4	156	3	81
Wexford	4	391	6	109	8	134	6	144	18	300*
Wicklow	1	109	4	81	3	56	2	53	4	74
Leinster	23	121	83	81	98	88	66	85	102	92
Clare	—	—	9	188	3	58	5	138	4	77
Cork Co. Boro	—	—	9	113	11	128	10	166	6	69
Cork County	1	378	16	109	18	113	8	72	14	88
Kerry	2	101	7	104	11	151	6	118	11	151
Limerick Co. Boro	—	—	3	85	1	268	2	75	4	105
Limerick County	—	—	3	54	7	116	1	248	7	116
Tipperary NR	—	—	1	318	3	114	1	41	3	85
Tipperary SR	1	129	11	262*	4	88	4	126	3	66
Waterford Co. Boro	—	—	1	45	1	41	1	59	3	124
Waterford County	1	195	2	73	5	168	7	335*	2	67
Munster	5	48	62	111	64	106	45	107	57	94
Galway	—	—	14	148	11	107	10	139	13	126
Leitrim	—	—	—	—	1	63	1	90	2	126
Mayo	5	427	9	143	12	175	11	230	7	102
Roscommon	—	—	4	137	3	95	—	—	3	94
Sligo	—	—	2	65	6	179	4	171	7	208
Connacht	5	116	29	125	33	131	26	147	32	126
Cavan	1	187	3	104	5	160	2	91	3	96
Donegal	2	156	11	159	5	67	7	133	16	213
Monaghan	—	—	6	216	5	166	1	48	1	338
Ulster	3	128	20	159	15	110	10	105	20	146
Total	36		194		210		147		211	

\* Highest SMR § Lowest SMR

**Table 44**  
**ALIMENTARY AND DIGESTIVE TRACT: WOMEN**

	Oesophagus		Stomach		Colon		Rectum	
	Actual Deaths	SMR	Actual Deaths	SMR	Actual Deaths	SMR	Actual Deaths	SMR
Carlow	15	123	41	140	35	80	12	97
Dublin Co. Boro	209	121	470	113	702	113	207	118
Dun Laoghaire Boro	29	157	69	156	94	142	31	165*
Dublin County	54	418	132	428	247	528	55	418
Kildare	23	74	38	51	78	70	17	54
Kilkenny	18	84	60	117	69	90	18	83
Laois	16	105	32	88	61	112	13	84
Longford	12	129	25	112	35	105	14	148
Louth	28	101	76	115	103	104	22	78
Meath	35	121	61	88	79	76	22	75
Offaly	17	97	31	74	53	85	20	113
Westmeath	17	91	47	104	69	103	25	110
Wexford	36	119	69	95	100	92	33	107
Wicklow	26	95	43	66	105	107	20	72
Leinster	535	95	1194	88	1830	91	509	89
Clare	25	95	55	87	74	79	34	127
Cork Co. Boro	60	137	103	98	168	107	57	128
Cork County	114	141	189	96	314	108	104	126
Kerry	31	84	78	88	155	117	47	125
Limerick Co. Boro	21	108	43	93	64	93	17	87
Limerick County	32	105	69	94	125	114	27	87
Tipperary NR	24	134	45	105	53	83	21	115
Tipperary SR	28	121	82	148	102	123	27	115
Waterford Co. Boro	15	122	31	105	56	127	17	136
Waterford County	27	178*	39	107	75	138	14	91
Munster	377	123	734	100	1186	108	365	117
Galway	30	58	96	77	164	88	41	77
Leitrim	5	62	41	213*	49	170*	8	98
Mayo	32	92	110	132	147	118	37	105
Roscommon	17	105	39	101	75	130	27	165*
Sligo	23	135	76	187	89	146	12	70
Connacht	107	84	362	118	524	114	125	96
Cavan	10	63	80	210	63	111	25	155
Donegal	21	55	136	149	161	118	46	119
Monaghan	18	118	51	139	60	109	14	90
Ulster	49	71	267	161	284	114	85	121
Total	1068		2557		3824		1084	

\* Highest SMR § Lowest SMR

**Table 45**  
**ALIMENTARY AND DIGESTIVE TRACT: MEN**

	Oesophagus		Stomach		Colon		Rectum	
	Actual Deaths	SMR	Actual Deaths	SMR	Actual Deaths	SMR	Actual Deaths	SMR
Carlow	16	97	55	125	37	91	14	68
Dublin Co. Boro	241	119	567	105	531	107	250	99
Dun Laoghaire Boro	26	129	53	98	74	149*	29	115
Dublin County	87	518	166	368	215	518	98	468
Kildare	40	91	99	84	84	78	41	74
Kilkenny	39	132	102	129	59	81	42	113
Laois	23	106	66	155	53	99	23	84
Longford	11	83	54	153	27	83	18	108
Louth	32	89	126	131	101	114	48	107
Meath	37	93	92	86	77	78	42	84
Offaly	13	53	58	88	57	94	38	123
Westmeath	36	141	70	103	64	102	31	97
Wexford	30	73	108	99	105	104	48	93
Wicklow	36	101	78	82	71	81	37	83
Leinster	667	93	1694	88	1555	88	759	84
Clare	24	65	100	101	91	100	42	91
Cork Co. Boro	54	100	123	86	146	110	79	117
Cork County	168	151	293	99	303	111	141	101
Kerry	41	79	118	86	146	115	94	145
Limerick Co. Boro	22	91	44	68	67	112	35	115
Limerick County	47	111	99	88	94	90	51	96
Tipperary NR	36	146	75	114	53	87	40	129
Tipperary SR	37	116	104	122	83	105	37	92
Waterford Co. Boro	17	111	29	71	27	72	14	73
Waterford County	34	162*	65	116	52	101	31	118
Munster	480	116	1050	95	1062	105	564	109
Galway	64	89	177	92	206	116	102	113
Leitrim	14	117	59	185	44	149*	23	153
Mayo	65	135	196	153	154	130	100	166*
Roscommon	32	137	82	132	73	127	46	157
Sligo	20	87	89	145	83	147	27	94
Connacht	195	109	603	127	560	128	298	133
Cavan	12	52	120	195*	65	114	36	124
Donegal	38	73	217	156	165	129	75	115
Monaghan	16	74	75	129	60	112	33	121
Ulster	66	68	412	159	290	122	144	119
Total	1408		3759		3467		1765	

\* Highest SMR § Lowest SMR

**Table 46**  
**CANCERS OF THE PANCREAS**

	MALE		FEMALE	
	Actual Deaths	SMR	Actual Deaths	SMR
Carlow	30	125	17	89
Dublin Co. Boro	318	108	294	109
Dun Laoghaire Boro	37	126	37	129
Dublin County	104	428	93	458
Kildare	41	64	38	78
Kilkenny	58	95	45	135
Laois	46	145	28	118
Longford	22	114	12	83
Louth	49	94	31	72
Meath	38	65	46	102
Offaly	26	72	30	110
Westmeath	39	105	41	140
Wexford	68	114	50	151
Wicklow	36	69	27	64
Leinster	912	87	789	90
Clare	72	134	49	120
Cork Co. Boro	62	79	80	118
Cork County	165	102	144	114
Kerry	105	139	78	136
Limerick Co. Boro	37	105	37	123
Limerick County	72	117	53	111
Tipperary NR	44	123	30	108
Tipperary SR	56	120	37	79
Waterford Co. Boro	27	121	14	73
Waterford County	37	121	26	110
Munster	677	113	548	115
Galway	111	106	69	85
Leitrim	33	189*	20	160*
Mayo	87	124	69	128
Roscommon	46	135	23	92
Sligo	45	134	34	129
Connacht	322	124	215	108
Cavan	54	160	25	101
Donegal	61	80	61	103
Monaghan	27	85	23	97
Ulster	142	100	109	101
Total	2,053		1,661	

\* Highest SMR § Lowest SMR

**Table 47**  
**CANCERS OF THE LUNG AND PLEURA**

	Lung				Pleura			
	MALE		FEMALE		MALE		FEMALE	
	Actual Deaths	SMR	Actual Deaths	SMR	Actual Deaths	SMR	Actual Deaths	SMR
Carlow	128	98	39	83	1	244	—	—
Dublin Co. Boro	2863	168*	1147	173	11	219	2	73
Dun Laoghaire Boro	251	156	127	179*	1	199	—	—
Dublin County	750	56§	333	65	2	47	—	—
Kildare	267	77	130	108	1	92	1	201
Kilkenny	214	91	58	71	—	—	1	293
Laois	150	87	49	84	—	—	1	413
Longford	94	90	30	84	—	—	—	—
Louth	338	119	118	111	1	112	1	227
Meath	269	85	95	86	—	—	—	—
Offaly	159	81	61	91	2	326	—	—
Westmeath	178	88	58	81	—	—	1	334
Wexford	319	98	138	118	—	—	—	—
Wicklow	304	108	117	112	—	—	—	—
Leinster	6104	107	2500	115	19	106	7	78
Clare	218	75	72	71	—	—	1	239
Cork Co. Boro	511	120	217	129	—	—	1	144
Cork County	834	95	275	86	2	73	3	233
Kerry	357	87	104	73	—	—	—	—
Limerick Co. Boro	178	93	67	90	—	—	—	—
Limerick County	290	87	101	86	1	95	—	—
Tipperary NR	188	96	58	84	—	—	—	—
Tipperary SR	266	105	90	102	3	377	—	—
Waterford Co. Boro	141	117	43	91	—	—	—	—
Waterford County	193	116	69	118	1	192	—	—
Munster	3176	97	1096	93	7	68	5	103
Galway	433	76	126	63	4	224	1	120
Leitrim	93	98	15	49§	—	—	—	—
Mayo	359	94	93	70	1	84	2	362
Roscommon	154	83	42	68	1	172	—	—
Sligo	176	97	60	92	—	—	1	369
Connacht	1215	86	336	68	6	135	4	196
Cavan	173	95	60	98	—	—	—	—
Donegal	329	80	73	50	3	232	1	165
Monaghan	154	90	31	53	—	—	—	—
Ulster	656	86	164	62	3	125	1	91
Total	11151		4096		35		17	

\* Highest SMR

**Table 48**  
**URINARY SYSTEM: WOMEN**

	Kidney		Bladder	
	Actual Deaths	SMR	Actual Deaths	SMR
Carlow	4	93	4	92
Dublin Co. Boro	77	127	102	123
Dun Laoghaire Boro	11	170	16	150*
Dublin County	34	73	24	54§
Kildare	8	74	8	76
Kilkenny	3	40§	9	90
Laois	6	113	4	99
Longford	2	61	4	100
Louth	8	83	6	98
Meath	10	99	11	84
Offaly	3	49	8	96
Westmeath	5	76	11	95
Wexford	17	160	11	109
Wicklow	12	126	11	94
Leinster	200	101	229	95
Clare	9	98	11	96
Cork Co. Boro	11	72	18	113
Cork County	23	81	34	108
Kerry	23	178*	13	116
Limerick Co. Boro	9	133	11	101
Limerick County	10	93	16	100
Tipperary NR	7	112	10	102
Tipperary SR	9	111	8	106
Waterford Co. Boro	5	116	4	101
Waterford County	3	56	8	112
Munster	109	102	133	107
Galway	16	88	25	88
Leitrim	4	142	7	140
Mayo	16	131	24	111
Roscommon	3	53	4	111
Sligo	6	101	7	127
Connacht	45	100	67	105
Cavan	7	126	3	113
Donegal	10	75	9	99
Monaghan	3	56	6	98
Ulster	20	82	18	102
Total	374		447	

\* Highest SMR

§ Lowest SMR

**Table 49**  
**URINARY SYSTEM: MEN**

	Kidney		Bladder	
	Actual Deaths	SMR	Actual Deaths	SMR
Carlow	3	41	10	98
Dublin Co. Boro	107	118	207	124
Dun Laoghaire Boro	21	231*	27	143*
Dublin County	47	61	60	49§
Kildare	10	51	24	74
Kilkenny	7	53	11	95
Laois	9	92	11	94
Longford	4	67	12	112
Louth	19	118	36	104
Meath	16	89	28	85
Offaly	11	99	13	90
Westmeath	10	87	19	98
Wexford	21	114	23	100
Wicklow	10	63	27	91
Leinster	295	91	508	93
Clare	16	96	29	99
Cork Co. Boro	21	87	40	103
Cork County	52	104	87	107
Kerry	28	120	33	116
Limerick Co. Boro	7	64	21	94
Limerick County	25	132	26	95
Tipperary NR	19	172	19	114
Tipperary SR	17	118	28	106
Waterford Co. Boro	2	29§	12	89
Waterford County	14	148	13	114
Munster	201	108	308	105
Galway	27	84	57	99
Leitrim	9	167	16	136
Mayo	26	120	46	123
Roscommon	12	114	29	121
Sligo	12	116	28	125
Connacht	86	107	176	114
Cavan	17	167	18	120
Donegal	28	120	44	105
Monaghan	6	61	20	97
Ulster	51	117	82	107
Total	633		1074	

\* Highest SMR

§ Lowest SMR

**Table 50**  
**SEXUAL AND REPRODUCTIVE ORGANS: MEN**

	Prostate		Testis	
	Actual Deaths	SMR	Actual Deaths	SMR
Carlow	34	78	2	117
Dublin Co. Boro	441	83	26	123
Dun Laoghaire Boro	87	163	2	95
Dublin County	176	39	15	84
Kildare	62	53	1	22§
Kilkenny	83	106	1	32
Laois	54	94	4	176
Longford	62	177*	—	—
Louth	90	95	2	53
Meath	87	83	5	120
Offaly	84	129	1	39
Westmeath	75	111	—	—
Wexford	104	96	5	117
Wicklow	80	85	1	27
Leinster	1519	80	65	86
Clare	129	132	6	156
Cork Co. Boro	118	83	9	160
Cork County	359	122	10	86
Kerry	155	113	10	185
Limerick Co. Boro	45	70	2	79
Limerick County	110	99	9	204
Tipperary NR	104	160	6	233*
Tipperary SR	78	92	2	60
Waterford Co. Boro	10	25§	2	125
Waterford County	72	130	2	91
Munster	1180	108	58	135
Galway	236	124	5	67
Leitrim	39	123	1	80
Mayo	203	160	2	40
Roscommon	107	174	4	164
Sligo	103	170	4	167
Connacht	688	146	16	86
Cavan	103	169	3	125
Donegal	175	127	3	55
Monaghan	57	99	2	88
Ulster	335	131	8	79
Total	3722		147	

\* Highest SMR

§ Lowest SMR



**Table 51**  
**SEXUAL AND REPRODUCTIVE ORGANS — WOMEN**

	Breast		Ovary		Uterus		Cervix		Vulva	
	Actual Deaths	SMR	Actual Deaths	SMR	Actual Deaths	SMR	Actual Deaths	SMR	Actual Deaths	SMR
Carlow	53	78	14	71	9	126	9	125	4	174
Dublin Co. Boro	1127	117	357	128	118	117	117	114	30	92
Dun Laoghaire Boro	171	166*	41	137	10	93	8	73	2	57
Dublin County	437	59§	131	61§	30	39§	43	55§	10	40
Kildare	123	71	41	81	16	88	16	87	4	68
Kilkenny	99	83	33	95	10	80	11	87	3	74
Laois	89	105	23	94	11	124	17	189	5	175
Longford	48	93	15	100	8	148	8	146	3	172
Louth	117	115	46	103	7	43	19	116	6	115
Meath	143	89	33	71	12	71	16	94	3	55
Offaly	90	93	26	92	13	128	11	107	1	30§
Westmeath	93	89	28	92	11	100	13	117	4	113
Wexford	176	104	60	122	25	141	25	139	10	175
Wicklow	142	94	44	100	12	75	13	81	4	78
Leinster	2968	94	892	98	292	89	326	98	89	84
Clare	155	106	37	87	22	143	11	71	9	182*
Cork Co. Boro	258	106	88	125	28	110	32	124	11	134
Cork County	528	117	115	88	42	89	47	98	24	158
Kerry	219	107	75	126	26	120	23	105	4	58
Limerick Co. Boro	122	113	30	96	10	89	9	79	6	165
Limerick County	193	113	38	77	24	135	22	122	3	52
Tipperary NR	95	95	33	114	21	201*	10	95	3	89
Tipperary SR	117	91	37	99	11	82	9	66	6	138
Waterford Co. Boro	61	89	16	81	6	84	8	110	3	130
Waterford County	77	91	29	118	11	124	7	78	1	35
Munster	1825	107	498	101	201	113	178	98	70	121
Galway	280	96	79	94	29	95	28	91	6	61
Leitrim	65	145	25	192*	8	170	12	252*	2	132
Mayo	195	101	61	109	25	123	21	102	8	122
Roscommon	110	123	30	115	8	85	11	115	3	99
Sligo	108	114	34	124	11	111	11	109	5	156
Connacht	758	106	229	111	81	108	83	110	24	100
Cavan	86	97	24	93	12	129	16	170	4	134
Donegal	217	102	59	96	29	130	19	84	12	167
Monaghan	89	106	24	97	8	90	9	100	2	70
Ulster	392	102	107	96	49	121	44	108	18	138
Total	5943		1726		623		631		201	

\* Highest SMR § Lowest SMR

**Table 52**  
**MULTIPLE MYELOMA**

	Men		Women	
	Actual Deaths	SMR	Actual Deaths	SMR
Carlow	7	104	4	73
Dublin Co. Boro	93	113	96	124
Dun Laoghaire Boro	7	85	20	242*
Dublin County	32	46	27	46§
Kildare	13	73	11	79
Kilkenny	11	91	10	105
Laois	4	45	6	89
Longford	9	167*	3	72
Louth	10	68	18	146
Meath	12	74	10	78
Offaly	9	90	12	154
Westmeath	16	154	5	60
Wexford	20	120	8	59
Wicklow	17	117	12	99
Leinster	260	89	242	96
Clare	25	166	7	60
Cork Co. Boro	16	73	28	144
Cork County	54	119	39	108
Kerry	23	109	10	61
Limerick Co. Boro	9	91	9	104
Limerick County	17	99	12	88
Tipperary NR	15	149	8	109
Tipperary SR	11	84	5	49
Waterford Co. Boro	2	32§	4	73
Waterford County	6	70	8	118
Munster	178	106	130	95
Galway	41	140	22	95
Leitrim	6	123	7	195
Mayo	25	154	24	155
Roscommon	11	116	14	195
Sligo	12	128	7	92
Connacht	95	131	74	130
Cavan	13	138	12	169
Donegal	20	94	12	71
Monaghan	8	90	6	88
Ulster	41	104	30	97
Total	574		476	

\* Highest SMR § Lowest SMR

**Table 53**  
**BRAIN CANCER**

	Men		Women	
	Actual Deaths	SMR	Actual Deaths	SMR
Carlow	9	87	2	27§
Dublin Co. Boro	145	114	132	127
Dun Laoghaire Boro	20	157*	11	99
Dublin County	69	64	56	70
Kildare	20	72	16	85
Kilkenny	22	118	10	76
Laois	14	102	5	55
Longford	7	84	13	233*
Louth	19	84	10	60
Meath	30	119	15	86
Offaly	15	97	10	95
Westmeath	18	112	13	115
Wexford	27	105	23	126
Wicklow	31	138	21	128
Leinster	446	98	337	99
Clare	18	77	19	120
Cork Co. Boro	30	88	32	122
Cork County	86	123	59	121
Kerry	32	98	14	63
Limerick Co. Boro	12	79	11	95
Limerick County	29	109	11	69
Tipperary NR	16	103	14	130
Tipperary SR	14	70	15	108
Waterford Co. Boro	6	62§	8	108
Waterford County	17	129	8	88
Munster	260	100	191	104
Galway	44	97	27	86
Leitrim	10	133	8	165
Mayo	35	116	25	120
Roscommon	17	116	8	82
Sligo	14	97	14	137
Connacht	120	107	82	107
Cavan	12	83	10	105
Donegal	35	107	8	35
Monaghan	14	102	14	152
Ulster	61	100	32	77
Total	887		642	

\* Highest SMR † Lowest SMR

**Table 54**  
**HODGKIN'S DISEASE**

	Men		Women	
	Actual Deaths	SMR	Actual Deaths	SMR
Carlow	4	113	4	189
Dublin Co. Boro	43	99	35	117
Dun Laoghaire Boro	7	161	4	125
Dublin County	19	52§	17	74
Kildare	9	95	2	37
Kilkenny	10	157	2	54
Laois	5	107	4	152
Longford	2	70	3	186
Louth	5	65	5	104
Meath	7	82	2	40
Offaly	10	188	4	132
Westmeath	7	127	3	92
Wexford	11	125	7	133
Wicklow	4	52§	5	106
Leinster	143	92	97	99
Clare	7	88	2	44
Cork Co. Boro	9	78	10	132
Cork County	34	142	15	107
Kerry	12	108	3	47
Limerick Co. Boro	—	—	1	30§
Limerick County	8	88	—	—
Tipperary NR	6	113	6	193
Tipperary SR	10	145	4	100
Waterford Co. Boro	4	122	3	141
Waterford County	5	111	3	114
Munster	95	107	47	89
Galway	16	103	8	89
Leitrim	3	116	2	144
Mayo	11	106	6	100
Roscommon	5	100	8	286*
Sligo	6	122	2	68
Connacht	41	107	26	117
Cavan	10	201*	3	109
Donegal	7	62	11	167
Monaghan	7	150	1	38
Ulster	24	115	15	125
Total	303		185	

\* Highest SMR § Lowest SMR

**Table 55 — OTHER MALIGNANT  
NEOPLASMS OF LYMPHOID TISSUE**

	200				202			
	Men		Women		Men		Women	
	Actual Deaths	SMR	Actual Deaths	SMR	Actual Deaths	SMR	Actual Deaths	SMR
Carlow	2	73	1	57	7	131	5	134
Dublin Co. Boro	50	149	29	116	70	107	69	130
Dun Laoghaire Boro	5	149	6	225*	6	92	11	194
Dublin County	11	39	12	63	45	81	33	81
Kildare	1	14§	4	89	15	105	7	73
Kilkenny	3	61	1	32§	10	104	5	76
Laois	4	110	3	137	5	71	3	64
Longford	—	—	1	75	6	140	—	—
Louth	3	50	5	125	8	69	3	35
Meath	5	75	2	48	11	85	8	90
Offaly	3	73	5	199	10	125	6	112
Westmeath	4	94	2	74	7	84	10	174
Wexford	4	59	3	69	19	143	6	65
Wicklow	3	51	1	25	15	130	10	120
Leinster	98	82	75	92	234	100	176	102
Clare	10	163	7	185	12	100	4	50
Cork Co. Boro	14	156	6	95	16	91	17	127
Cork County	11	60	12	103	43	119	32	129
Kerry	9	105	9	169	19	113	13	115
Limerick Co. Boro	5	124	4	144	5	64	2	34§
Limerick County	10	142	5	113	8	58	8	85
Tipperary NR	7	171	3	116	11	138	5	91
Tipperary SR	9	169	3	90	4	39§	8	113
Waterford Co. Boro	—	—	3	169	4	81	6	159
Waterford County	3	86	—	—	5	73	3	65
Munster	78	114	52	118	127	95	98	105
Galway	17	142	10	133	24	103	14	88
Leitrim	7	352*	—	—	6	154*	2	81
Mayo	7	88	5	100	18	115	9	85
Roscommon	4	103	1	43	10	132	—	—
Sligo	6	157	4	163	11	148	10	192
Connacht	41	138	20	108	69	119	35	89
Cavan	4	104	1	44	5	67	5	103
Donegal	8	92	3	55	17	101	11	94
Monaghan	5	139	3	136	5	71	2	43
Ulster	17	106	7	70	27	86	18	85
Total	234		154		457		327	

\* Highest SMR      § Lowest SMR

**Table 56  
LYMPHOID LEUKAEMIAS**

	Acute				Chronic			
	Male		Female		Male		Female	
	Actual Deaths	SMR	Actual Deaths	SMR	Actual Deaths	SMR	Actual Deaths	SMR
Carlow	3	170*	1	79	8	233*	2	117
Dublin Co. Boro	33	152	9	51	33	78	20	83
Dun Laoghaire Boro	2	92	1	52	4	95	5	194
Dublin County	15	82	14	102	23	65	5	27
Kildare	5	106	5	155	5	54	5	115
Kilkenny	1	31	3	136	7	113	3	100
Laois	5	214	1	64	6	132	—	—
Longford	1	71	1	105	4	145	3	231
Louth	1	26	7	246	7	93	3	78
Meath	7	164	2	67	14	168	6	149
Offaly	2	76	2	111	4	78	2	82
Westmeath	3	109	2	103	6	112	7	267*
Wexford	1	23§	1	32	3	35	4	94
Wicklow	2	52	5	178	10	135	3	79
Leinster	81	105	54	93	134	89	68	86
Clare	5	126	2	74	14	182	3	82
Cork Co. Boro	8	138	1	22§	15	133	13	213
Cork County	14	118	12	144	34	147	17	151
Kerry	7	126	5	131	15	139	9	175
Limerick Co. Boro	1	39	2	100	1	20	2	74
Limerick County	6	132	1	32	9	102	8	188
Tipperary NR	1	38	2	108	11	214	1	40
Tipperary SR	1	29	3	126	11	165	2	62
Waterford Co. Boro	—	—	3	237	1	31§	4	233
Waterford County	3	133	—	—	2	46	1	47
Munster	46	104	31	98	113	131	60	140
Galway	6	78	5	93	9	60	8	110
Leitrim	1	78	2	241	3	120	—	—
Mayo	7	136	2	56	8	80	4	82
Roscommon	2	80	3	181	7	144	3	133
Sligo	1	41	2	114	4	83	2	84
Connacht	17	89	14	106	31	83	17	95
Cavan	3	121	1	61	5	104	2	90
Donegal	4	72	5	126	10	92	2	38§
Monaghan	—	—	5	318*	1	22	—	—
Ulster	7	67	11	154	16	79	4	41
Total	151		110		294		149	

\* Highest SMR      § Lowest SMR

**Table 57  
MYELOID LEUKAEMIAS**

	Acute				Chronic			
	Male		Female		Male		Female	
	Actual Deaths	SMR	Actual Deaths	SMR	Actual Deaths	SMR	Actual Deaths	SMR
Carlow	1	27§	2	67	—	—	1	84
Dublin Co. Boro	48	104	43	101	21	104	28	166
Dun Laoghaire Boro	7	151	7	154	4	198	1	55
Dublin County	20	51	23	71	5	29	6	46
Kildare	7	69	7	91	2	45	2	66
Kilkenny	7	103	5	95	2	67	1	48
Laois	7	140	3	80	1	46	3	203
Longford	3	99	—	—	1	76	—	—
Louth	3	36	7	103	3	83	3	111
Meath	6	66	9	127	5	125	2	71
Offaly	2	35	1	23§	1	40	5	294*
Westmeath	7	119	4	87	1	39	1	55
Wexford	17	181	6	81	3	73	2	68
Wicklow	8	98	4	60	7	197	1	38§
Leinster	143	87	121	87	56	78	56	102
Clare	11	130	4	62	1	27§	1	39
Cork Co. Boro	18	146	14	131	8	148	3	70
Cork County	32	126	23	116	21	189	10	127
Kerry	16	135	12	132	6	116	3	83
Limerick Co. Boro	6	108	12	253*	1	41	1	53
Limerick County	7	72	6	80	2	47	3	101
Tipperary NR	8	142	4	91	4	162	3	172
Tipperary SR	10	136	5	88	2	62	6	267
Waterford Co. Boro	2	57	2	66	3	196	2	167
Waterford County	3	62	8	215	2	53	2	135
Munster	113	119	90	120	50	121	34	114
Galway	27	164	13	102	6	83	4	79
Leitrim	6	219*	2	103	2	167	—	—
Mayo	13	118	6	70	3	62	2	59
Roscommon	5	93	3	76	4	171	2	127
Sligo	3	57	7	168	5	217*	1	60
Connacht	54	132	31	99	20	112	9	72
Cavan	4	76	5	128	4	173	1	65
Donegal	6	50	7	75	10	192	4	108
Monaghan	3	60	8	214	1	46	—	—
Ulster	13	58	20	118	15	155	5	74
Total	323		262		141		104	

\* Highest SMR      † Lowest SMR

**Table 58  
CANCER OF LIVER**

	Male		Female	
	Actual Deaths	SMR	Actual Deaths	SMR
	Actual Deaths	SMR	Actual Deaths	SMR
Carlow	1	31	4	82
Dublin Co. Boro	43	110	83	120
Dun Laoghaire Boro	5	128	8	108
Dublin County	12	37	42	79
Kildare	8	94	4	32§
Kilkenny	7	122	6	70
Laois	6	142	3	99
Longford	1	39	—	—
Louth	2	29§	5	45
Meath	3	39	10	87
Offaly	5	105	4	57
Westmeath	3	61	4	53
Wexford	11	139	10	83
Wicklow	4	58	5	46
Leinster	111	80	188	84
Clare	7	98	5	48
Cork Co. Boro	11	106	22	126
Cork County	22	103	44	136
Kerry	17	170	14	95
Limerick Co. Boro	6	128	5	65
Limerick County	8	98	17	139
Tipperary NR	5	105	9	126
Tipperary SR	10	162	7	76
Waterford Co. Boro	4	66	5	102
Waterford County	5	123	8	132
Munster	95	119	136	111
Galway	25	180	27	130
Leitrim	3	130	5	156
Mayo	7	75	22	159
Roscommon	12	266*	9	140
Sligo	5	113	11	162*
Connacht	52	151	74	145
Cavan	4	90	6	95
Donegal	6	60	13	86
Monaghan	4	95	9	148
Ulster	14	75	28	101
Total	272		426	

\* Highest SMR      § Lowest SMR





**APPENDIX 1**

**DEATH CERTIFICATE AND  
DEATH REGISTRATION FORMS**

BIRTHS AND DEATHS REGISTRATION ACT (IRELAND), 1880.

S.R.D. ....  
District ....  
Entry No. ....

The certificate opposite should be completed and signed by the medical practitioner who personally attended the deceased during the last illness, and by no other person.

# MEDICAL CERTIFICATE OF THE CAUSE OF DEATH

Name of deceased: ..... Age .....

Place of death: .....

Last seen alive by me on: ..... Date of death: .....

Whether seen after death by me (answer "yes" or "no" in all cases):

☐

Former Residence  
of Deceased

If a woman, was the deceased known to have been pregnant at the time of death or within the previous 42 days (answer "yes" or "no" in all cases):

☐

## COUNTERFOIL

Name of  
Deceased .....

Age .....

Last seen .....

Died on .....

At .....

## Cause of Death

I. (a) .....

(b) .....

(c) .....

II. ....

Signed .....

Date .....

## CAUSE OF DEATH (please print clearly)

I  
*Disease or Condition directly leading to death.* (This does not mean the mode of dying, e.g. heart failure, asthenia etc. It means the disease, injury or complications which caused death.)  
(a) .....  
.....  
.....  
due to (or as a consequence of)

*Antecedent Causes.*  
(morbid conditions if any, giving rise to the above cause, stating the underlying condition last)  
(b) .....  
.....  
due to (or as a consequence of)  
(c) .....

II  
*Other Significant Conditions*  
contributing to the death but not related to the disease or condition causing it.  
.....  
.....  
.....

Approximate interval  
between onset and death

Name of Medical Practitioner (block capitals): .....

Signature: ..... Registered Qualification: .....

Residence ..... Date: .....

When completed and signed, this certificate should be given to one of the qualified informants listed overleaf, who will bring it to the Registrar of Births and Deaths for the district in which the death occurred, and to no other person.

Supplied by An Local Child Welfare to Localize the Accurate Registrations of Deaths in Public Institutions

REGISTRAR'S STAMP

Name of Institution \_\_\_\_\_ Date of Registration \_\_\_\_\_ 31-39

City to, in Spain	Date of death			Name, surname and home address (If possible, give also name of Registrar's district, adding U.D. or R.D. as case may be)	Sex (M, F, or un- known)	Married, widowed, or single	Age	Occupation (If stated, give previous occupation. If a married or widowed woman, give husband's at work, give occupation of husband)	Completing according to Instruction 6	Cause of Death	Certified or uncertified, signature of post-mortem Officer	Initials of Recording Officer
	Day	Month	Year									
5-7	8, 9	10	11, 12	13-17	18	19	20-25	26-27	6	28-35	36	
				For Official use only			For Official use only	For Official use only			For Official use only	
				For Official use only			For Official use only	For Official use only			For Official use only	
				For Official use only			For Official use only	For Official use only			For Official use only	
				For Official use only			For Official use only	For Official use only			For Official use only	
				For Official use only			For Official use only	For Official use only			For Official use only	
				For Official use only			For Official use only	For Official use only			For Official use only	

**DEATHS**

**CONFIDENTIAL.** - This form is required for statistical purposes only and will be treated as strictly confidential. It should be filled in by the person requiring the death to be registered and handed to the Registrar in accordance with the Vital Statistics Regulations, 1954.

<div style="border: 1px solid black; padding: 5px; margin-bottom: 5px;">Registrar's Stamp</div> <div style="border: 1px solid black; padding: 5px; margin-bottom: 5px; text-align: right;">1—4</div>	<div style="border: 1px solid black; padding: 5px; margin-bottom: 5px; text-align: center;"> <i>(To be filled in by Registrar)</i>              Entry No. in Register         </div> <div style="border: 1px solid black; padding: 5px; margin-bottom: 5px; text-align: right;">5—7</div>
8—12	
Date <del>on</del> which death occurred... day of..... 19.....	For Office use only.
Place at which death occurred <i>(full address)</i>	13
Name, surname and home address of deceased	14—17
Sex of deceased	18
Marital condition of deceased ( <i>i.e. whether married, widowed or single</i> )	19
Age of deceased ( <i>in hours, if under one day; in completed days, if under one month; in completed months, if under one year; otherwise in completed years (last birthday).</i> )	20      21—22 23—24      25
Occupation of deceased ( <i>in full detail</i> ). If deceased was a child under 14 years give occupation of parent or guardian. If deceased was retired, state "Retired" and give previous occupation.	26—27
If deceased was a married or widowed woman, give occupation of her husband ( <i>in full detail</i> )*	
<b>THIS PORTION TO BE FILLED IN BY REGISTRAR</b>	
Cause of death	Duration of illness
(a) .....	.....
(b) .....	.....
(c) .....	.....
.....	.....
.....	.....
.....	37
State whether certified or uncertified, inquest or post-mortem .....	
Complete in accordance with Article 8 in instructions .....	
Signature of informant .....	
Qualification of informant .....	
<i>(i.e. whether widower, widow, son, daughter, etc.).</i>	
Address of informant .....	
Date of registration .....	38—40
Signature of Registrar .....	

\*For example:—farmer; farm labourer; farmer's relative assisting on farm; foreman in hosiery factory; textile machinist; bricklayer; road worker; garage mechanic; radio mechanic; civil engineer; bank clerk; insurance clerk; solicitor's clerk; clerical officer—Civil Service.

APPENDIX 2

COUNTY AND COUNTY BOROUGH  
POPULATIONS, 1981

## POPULATION FIGURES FROM 1981 CENSUS

## REPUBLIC OF IRELAND

Age Group	Male	Female
0 - 4	181,030	171,974
5 - 9	179,108	170,379
10 - 14	175,271	165,967
15 - 19	166,677	159,752
20 - 24	140,446	135,681
25 - 29	124,378	121,675
30 - 34	118,287	113,671
35 - 39	99,286	94,543
40 - 44	85,320	80,604
45 - 49	77,781	74,069
50 - 54	75,320	74,360
55 - 59	73,289	76,317
60 - 64	67,978	71,288
65 - 69	64,306	69,613
70 - 74	48,380	54,758
75 - 79	29,172	39,279
80 - 84	15,415	25,047
85 - +	7,910	15,074
Total	1,729,354	1,714,051

## POPULATION FIGURES FROM 1981 CENSUS

Age group	Galway		Leitrim		Mayo	
	Male	Female	Male	Female	Male	Female
0 - 4	8821	8490	1279	1152	5616	5372
5 - 9	8695	8449	1257	1163	5686	5454
10 - 14	8696	8135	1224	1140	5485	5465
15 - 19	8361	7845	1174	1031	4939	4751
20 - 24	6813	6603	988	771	3928	3485
25 - 29	5957	5690	855	760	3576	3357
30 - 34	5737	5288	857	706	3647	3192
35 - 39	4929	4393	706	604	3098	2624
40 - 44	4337	3710	705	567	2706	2373
45 - 49	3914	3447	685	565	2664	2264
50 - 54	3762	3777	766	640	2713	2480
55 - 59	3819	3633	769	715	2771	2807
60 - 64	3789	3592	900	770	3076	2990
65 - 69	3909	3871	992	813	3400	3251
70 - 74	3130	2788	712	604	2685	2389
75 - 79	1908	1925	426	433	1590	1650
80 - 84	1146	1434	264	306	884	1106
85 - +	607	836	140	170	523	769
Total	88,330	83,688	14,699	12,910	58,987	55,779

## POPULATION FIGURES FROM 1981 CENSUS

Age group	Donegal		Monaghan	
	Male	Female	Male	Female
0 - 4	6811	6538	2883	2646
5 - 9	6596	6488	2707	2415
10 - 14	6466	6200	2476	2413
15 - 19	5503	5314	2417	2105
20 - 24	4104	3923	1995	1710
25 - 29	4008	3794	1841	1648
30 - 34	4036	3809	1739	1581
35 - 39	3668	3107	1421	1241
40 - 44	2969	2717	1173	1095
45 - 49	2681	2339	1208	1071
50 - 54	2780	2513	1261	1099
55 - 59	2793	2699	1292	1148
60 - 64	2949	2822	1231	1075
65 - 69	3140	2966	1166	1075
70 - 74	2514	2406	886	901
75 - 79	1557	1760	586	649
80 - 84	891	1048	268	406
85 - +	496	707	129	235
Total	63,962	61,150	26,679	24,513

## POPULATION FIGURES FROM 1981 CENSUS

Age group	Roscommon		Sligo		Cavan	
	Male	Female	Male	Female	Male	Female
0 - 4	2569	2473	2969	2565	2683	2636
5 - 9	2593	2514	2618	2575	2606	2531
10 - 14	2803	2447	2687	2516	2555	2480
15 - 19	2333	2198	2492	2381	2533	2168
20 - 24	1934	1535	1949	1942	2117	1650
25 - 29	1768	1421	1791	1828	1822	1544
30 - 34	1551	1422	1889	1743	1727	1500
35 - 39	1424	1236	1522	1344	1453	1206
40 - 44	1325	1148	1348	1253	1289	1067
45 - 49	1385	1205	1271	1104	1326	1159
50 - 54	1544	1347	1411	1240	1513	1174
55 - 59	1502	1395	1317	1385	1468	1379
60 - 64	1548	1389	1355	1353	1500	1352
65 - 69	1679	1444	1499	1381	1459	1343
70 - 74	1241	1065	1109	1049	1066	922
75 - 79	747	731	676	759	680	658
80 - 84	453	579	371	556	368	471
85 - +	254	341	182	320	173	277
Total	28,653	25,890	28,183	27,291	28,338	25,517

### POPULATION FIGURES FROM 1981 CENSUS

Age group	Cork Co. Boro.		Cork County		Kerry	
	Male	Female	Male	Female	Male	Female
0 - 4	6054	5769	14682	14028	6232	5800
5 - 9	6619	6159	14324	13415	6136	5866
10 - 14	7350	6773	13250	12514	5825	5720
15 - 19	7752	7532	11939	10542	5428	5059
20 - 24	6637	6780	9938	8435	4461	3933
25 - 29	4691	4528	9705	9211	4175	3776
30 - 34	3891	3999	9863	9058	4101	3690
35 - 39	3524	3624	8054	7543	3540	3039
40 - 44	3438	3590	6691	5929	3070	2677
45 - 49	3283	3348	5993	5560	2919	2479
50 - 54	3036	3259	5777	5518	2913	2648
55 - 59	2749	3212	5816	5854	3010	2883
60 - 64	2248	2891	5821	5783	3238	2924
65 - 69	1935	2883	5612	5645	3390	3146
70 - 74	1490	2389	4142	4528	2490	2431
75 - 79	877	1781	2523	3112	1407	1572
80 - 84	415	1057	1404	2013	736	1062
85 - +	188	593	677	1222	421	573
<b>Total</b>	<b>66,177</b>	<b>70,167</b>	<b>136,211</b>	<b>129,910</b>	<b>63,492</b>	<b>59,278</b>

### POPULATION FIGURES FROM 1981 CENSUS

Age group	Tipperary S.R.		W'ford Co. Boro.		W'ford County	
	Male	Female	Male	Female	Male	Female
0 - 4	4077	3876	2005	1919	2830	2615
5 - 9	3997	3848	1992	1944	2616	2521
10 - 14	4091	3654	2134	2027	2625	2404
15 - 19	4130	3396	2039	1997	2320	2192
20 - 24	2897	2594	1475	1709	1810	1514
25 - 29	2693	2394	1329	1311	1736	1682
30 - 34	2467	2322	1253	1286	1739	1530
35 - 39	2012	1825	1143	1118	1439	1376
40 - 44	1840	1649	1031	1020	1286	1076
45 - 49	1745	1567	954	912	1166	1100
50 - 54	1796	1726	763	818	1151	1024
55 - 59	1916	1816	724	824	1187	1167
60 - 64	1723	1647	580	689	1152	1083
65 - 69	1521	1591	492	690	1045	1059
70 - 74	1152	1224	421	613	810	802
75 - 79	732	912	263	416	485	585
80 - 84	356	632	102	254	242	377
85 - +	181	348	51	175	123	250
<b>Total</b>	<b>39,256</b>	<b>37,021</b>	<b>18,751</b>	<b>19,722</b>	<b>25,762</b>	<b>24,356</b>

### POPULATION FIGURES FROM 1981 CENSUS

Age group	Limerick Co. Boro.		Limerick Co.		Tipperary N.R.	
	Male	Female	Male	Female	Male	Female
0 - 4	2933	2818	5614	5405	3127	2969
5 - 9	3140	2947	5487	5327	3163	2883
10 - 14	3313	3097	5096	4690	2986	2909
15 - 19	3357	3588	4577	4125	2765	2664
20 - 24	2919	2821	3851	3409	2296	1888
25 - 29	2105	2124	3801	3464	1979	1818
30 - 34	1893	1873	3656	3382	1921	1764
35 - 39	1524	1600	3125	2900	1577	1548
40 - 44	1486	1440	2578	2274	1398	1239
45 - 49	1371	1407	2361	2014	1426	1321
50 - 54	1306	1394	2250	2018	1423	1334
55 - 59	1256	1339	2204	2230	1450	1476
60 - 64	969	1199	2199	2062	1390	1273
65 - 69	882	1182	2043	2024	1224	1178
70 - 74	625	968	1550	1563	976	995
75 - 79	392	632	806	1072	626	719
80 - 84	166	387	426	691	348	458
85 - +	86	197	248	403	172	301
<b>Total</b>	<b>29,723</b>	<b>31,013</b>	<b>51,872</b>	<b>49,053</b>	<b>30,247</b>	<b>28,737</b>

### POPULATION FIGURES FROM 1981 CENSUS

Age group	Carlow		Dublin Co. Boro.		Dun Laoghaire C.B.	
	Male	Female	Male	Female	Male	Female
0 - 4	2331	2171	19055	18181	2086	1981
5 - 9	2243	2138	20740	19783	2156	2043
10 - 14	2044	1990	24454	23483	2463	2373
15 - 19	1904	1902	29558	31359	2706	3101
20 - 24	1620	1524	29161	31374	2347	2753
25 - 29	1443	1287	18598	19529	1790	1799
30 - 34	1318	1240	14300	15230	1476	1565
35 - 39	1128	1073	12395	13068	1321	1535
40 - 44	1002	845	12155	13322	1275	1542
45 - 49	882	856	12302	13658	1246	1496
50 - 54	904	792	12466	14367	1252	1528
55 - 59	887	851	11752	14433	1159	1475
60 - 64	738	800	9797	12825	969	1528
65 - 69	663	727	8642	12421	955	1457
70 - 74	521	578	6293	10131	789	1406
75 - 79	314	431	3824	7462	463	1044
80 - 84	168	262	1734	4485	225	667
85 - +	85	158	790	2755	115	410
<b>Total</b>	<b>20,195</b>	<b>19,625</b>	<b>248,016</b>	<b>277,866</b>	<b>24,793</b>	<b>29,703</b>



**POPULATION FIGURES FROM 1981 CENSUS**

Age group	Wexford		Wicklow		Clare	
	Male	Female	Male	Female	Male	Female
0 - 4	5511	5284	5013	4845	4742	4551
5 - 9	5459	5108	5044	4723	4714	4520
10 - 14	5344	4990	4393	4284	4270	4195
15 - 19	4638	4332	3877	3769	3740	3411
20 - 24	3748	3363	3195	3179	3070	2638
25 - 29	3381	3148	3223	3209	2949	2762
30 - 34	3293	3068	3431	3252	3241	3018
35 - 39	2851	2722	2826	22752	2706	2392
40 - 44	2555	2214	2243	2095	2324	1990
45 - 49	2168	2054	1963	1799	2080	1695
50 - 54	2186	2098	1692	1808	2057	1823
55 - 59	2093	2249	1616	1746	2065	1867
60 - 64	1917	2066	1477	1619	2006	1820
65 - 69	1835	1949	1383	1508	2059	1883
70 - 74	1585	1665	1062	1288	1547	1401
75 - 79	975	1239	676	950	947	1041
80 - 84	524	736	390	588	565	763
85 - +	273	460	159	372	284	431
Total	50,336	48,745	43,663	43,786	45,366	42,201

**POPULATION FIGURES FROM 1981 CENSUS**

Age group	Laois		Longford		Louth	
	Male	Female	Male	Female	Male	Female
0 - 4	2825	2663	1709	1575	4964	4761
5 - 9	2685	2628	1629	1426	4826	4612
10 - 14	28229	2478	1520	1512	4675	4527
15 - 19	2590	2219	1469	1307	4310	4056
20 - 24	2044	1720	1106	928	3561	3561
25 - 29	1872	1638	1109	909	3331	3100
30 - 34	1629	1458	1063	945	3016	3027
35 - 39	1442	1301	836	765	2660	2531
40 - 44	1247	1090	728	620	2204	2033
45 - 49	1141	1065	782	631	1897	1814
50 - 54	1218	1124	715	722	1711	1822
55 - 59	1313	1100	808	763	1876	2054
60 - 64	1188	1037	806	755	1622	1854
65 - 69	1111	963	829	750	1412	1636
70 - 74	758	782	526	496	1009	1251
75 - 79	480	579	329	360	580	863
80 - 84	266	335	182	248	314	566
85 - +	136	217	88	140	157	318
Total	26,774	24,397	16,234	14,906	44,125	44,389

**POPULATION FIGURES FROM 1981 CENSUS**

Age group	Dublin County		Kildare		Kilkenny	
	Male	Female	Male	Female	Male	Female
0 - 4	29103	27269	6716	6098	3792	3696
5 - 9	26991	25764	6446	5969	3791	3517
10 - 14	23267	22159	5670	5029	3589	3476
15 - 19	18605	18580	5127	4258	3266	3023
20 - 24	14989	16047	4282	3695	2828	2496
25 - 29	18006	19783	4522	4320	2624	2410
30 - 34	18975	19221	4496	4226	2511	2200
35 - 39	14897	15051	3605	3210	2113	1902
40 - 44	11492	11338	2523	2330	1719	1558
45 - 49	8664	8400	2045	1847	1561	1471
50 - 54	6773	6913	1835	1723	1665	1490
55 - 59	5422	5891	1771	1750	1691	1562
60 - 64	4284	4977	1606	1552	1578	1542
65 - 69	3480	4254	1316	1418	1431	1381
70 - 74	2327	3170	1023	1114	1093	1113
75 - 79	1307	2339	563	701	625	797
80 - 84	626	1332	295	402	344	483
85 - +	325	765	126	243	174	294
Total	209,533	213,253	53,967	50,155	36,395	34,411

**POPULATION FIGURES FROM 1981 CENSUS**

Age group	Meath		Offaly		Westmeath	
	Male	Female	Male	Female	Male	Female
0 - 4	5800	5603	3249	3074	3292	3151
5 - 9	5727	5321	3271	3099	3154	3229
10 - 14	5233	4788	3136	2947	3322	3151
15 - 19	4543	4026	3100	2700	3185	2821
20 - 24	3587	3269	2369	1900	2427	2208
25 - 29	3561	3542	1957	1821	2180	2068
30 - 34	3691	3410	1827	1746	2053	1920
35 - 39	3079	2860	1571	1476	1679	1577
40 - 44	2324	2128	1392	1291	1467	1384
45 - 49	1949	1904	1347	1222	1402	1295
50 - 54	1904	1775	1372	1225	1405	1361
55 - 59	1912	1814	1402	1345	1479	1455
60 - 64	1683	1658	1350	1179	1289	1182
65 - 69	1580	1584	1105	1021	1117	1119
70 - 74	1115	1133	858	742	875	851
75 - 79	694	834	538	574	576	699
80 - 84	352	508	281	424	309	411
85 - +	205	305	165	236	177	253
Total	48,957	46,462	30,290	28,022	31,388	30,135

#### REFERENCES

1. World Health Organisation. Manual of the International Statistical Classification of diseases, injuries and causes of death. 1965 revision. Geneva. World Health Organisation, 1967.
2. World Health Organisation. Manual of the International Statistical Classification of diseases, injuries and causes of death. 1975 revision. Geneva. World Health Organisation, 1977.
3. Central Statistics Office. Report on vital statistics 1985. Dublin. Stationery Office, 1988.
4. Heasman M.A. Lipworth J. Accuracy of certification of cause of death. Studies on medical population subjects. No. 20, London, HMSO, 1966.
5. Royal College of Physicians and Royal College of Pathologists. Medical aspects of death certification. *Journal of the Royal College of Physicians*: 16, 1982.